

Wild Earth Travel

Small Ships, Big Adventures

wildearth-travel.com

info@wildearth-travel.com

DISCOVERY CRUISE - FROM PHNOM PENH TO HO CHI MINH CITY

A brief and rewarding taste of Mekong's agrarian heartlands. Aboard the luxurious Aqua Mekong, this 3-night river cruise on the Mekong river offers plenty to see and explore for travelers with limited time. Our private fleet of ergonomic, sheltered launch boats put the pleasure and efficiency in exploring Mekong's myriad waterways, making the most of your time in this beautiful region.



ITINERARY

Day 1 CAMBODIA Phnom Penh

Our crew warmly welcomes you aboard the Aqua Mekong with our special refreshers, such as the salted watermelon crush with Thai basil. Together we celebrate our journey towards the heart of the Mekong river with the Khmer Apsara dance performance, a famous centuries-old tradition that is memorialized on the temple walls of Angkor Wat.

Day 2 VIETNAM Ka om Samnor-vinh Xuong Border Crossing - Chau Doc - My An Hung

Say 'Good Morning, Vietnam' while we cross the border and sail towards Tan Chau, a vibrant border town. Take the local rickshaw (xe loi) for a trip around town, or pedal 18 kilometers on a top-of-the-line mountain bike on the peaceful island of Long Khanh. In the afternoon, stroll through the verdant

Wild Earth Travel

Small Ships, Big Adventures

0800 945 3327 (within New Zealand) | +64 (0) 3 365 1355 | 1800 107 715 (within Australia)

info@wildearth-travel.com | wildearth-travel.com



Wild Earth Travel

Small Ships, Big Adventures

wildearth-travel.com

info@wildearth-travel.com

plantations in the Mekong Delta village of My An Hung, visiting a local's home to savor local fruits, listen to traditional folk song performances by villagers and participate in a unique unicorn dance. A biking option is also available for those who wish to explore the idyllic countryside on wheels.

Day 3 VIETNAM Binh Thanh/Sa Dec - Cai Be

Begin the day learning about traditional mat weaving at Binh Thanh village or visit Sa Dec's vibrant market and the beautifully-preserved home of Marguerite Duras' legendary lover, Mr. Huynh Thuy Le. We continue downstream for Cai Be, sailing in a traditional sampan past lone fishermen on their long tail boats. Later in Cai Be, walk or cycle among high-roofed open courtyard houses that date back more than 100 years, before arriving at one such house invited by a gracious local resident.

Day 4 VIETNAM My Tho – Ho Chi Minh

Enroute to My Tho port for disembarkation, visit Vinh Trang Pagoda, one of the largest Mahayana Buddhist temple in the region. Admire the temple's eclectic architectural style and see three large Buddha statues plus an impressive collection of bonsai trees.

Please Note:

Itineraries are subject to change, due to weather and other conditions.

Wild Earth Travel

Small Ships, Big Adventures

0800 945 3327 (within New Zealand) | +64 (0) 3 365 1355 | **1800 107 715** (within Australia)

info@wildearth-travel.com | **wildearth-travel.com**

Wild Earth Travel

Small Ships, Big Adventures

wildearth-travel.com

info@wildearth-travel.com

YOUR SHIP: AQUA MEKONG

| | |
|----------------------------|--------------------------------|
| YOUR SHIP: | Aqua Mekong |
| VESSEL TYPE: | Luxury River Expedition |
| LENGTH: | 62.4 meters / 204 feet |
| PASSENGER CAPACITY: | 40 |
| BUILT/REFURBISHED: | 2014 |

Spacious and indulgent, yet intimate enough to feel entirely exclusive, the Aqua Mekong incorporates relaxed yet refined lounging and dining areas and can accommodate a maximum of 40 guests plus crew. Modern navigation technologies and the highest cruise ship standards as well as our experienced river pilot and crew ensure smooth travel and safety on the water.

The Aqua Mekong has 20 air conditioned Design Suites, each one a generous 30 square meters (320 square feet), eight with balconies and all created entirely of local materials with the relaxed sophistication and contemporary comforts of a five star resort. Floor to ceiling panoramic windows allow guests to gaze upon the Mekong from the pillow top California king size bed that can be converted upon request into two full twin beds. More captivating views await on the plush, roomy daybed placed by the window wall or for our eight balcony accommodations, outside along with a romantic table for two. Those who wish to keep up on the world beyond these enthralling riverbanks will appreciate the flat screen television and complementary high speed wireless internet.

Sunlit indoors and out, the top level Observation Deck aboard the Aqua Mekong has been designed to seamlessly connect

guests with the constantly shifting landscape of floating Vietnamese villages, French colonial church spires and gilded Buddhist stupas along this mighty river, always in the utmost comfort. Whether one chooses to relax in the air conditioned Indoor Lounge, go horizontal under the sun outside at the ship's Outdoor Lounge area or cool off with a plunge in the shimmering pool at the bow side, the Observation Deck ensures that the river always remains in full view.

Guests gravitate to the Indoor Lounge in the mornings for ca phe a, Vietnamese coffee poured over ice with sweet condensed milk, between excursions to swap travelers tales and for daily lectures from the expert local guides.



cal guides.

Wild Earth Travel

Small Ships, Big Adventures

0800 945 3327 (within New Zealand) | +64 (0) 3 365 1355 | **1800 107 715** (within Australia)

info@wildearth-travel.com | wildearth-travel.com

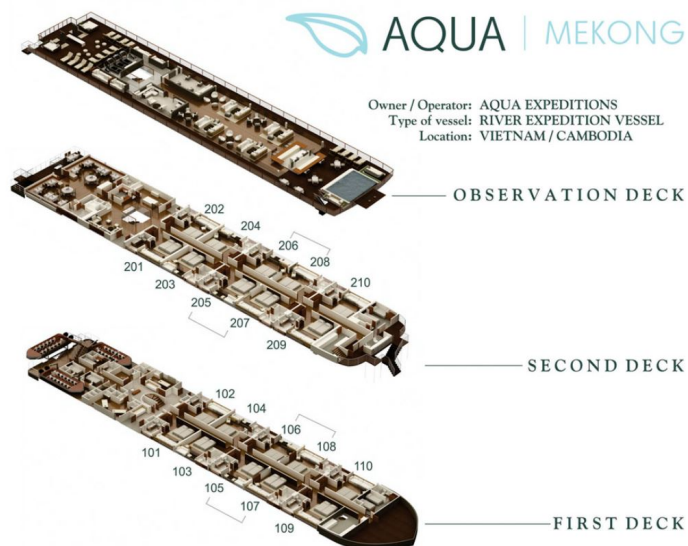
Wild Earth Travel

Small Ships, Big Adventures

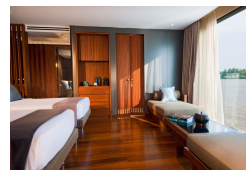
wildearth-travel.com

info@wildearth-travel.com

INSIDE YOUR SHIP



Suite. From



Wild Earth Travel

Small Ships, Big Adventures

0800 945 3327 (within New Zealand) | +64 (0) 3 365 1355 | 1800 107 715 (within Australia)

info@wildearth-travel.com | wildearth-travel.com

Wild Earth Travel

Small Ships, Big Adventures

wildearth-travel.com

info@wildearth-travel.com

PRICING

05-Aug-2025 to 08-Aug-2025

Suite. From 4650 USD pp

19-Aug-2025 to 22-Aug-2025

Suite. From 4650 USD pp

26-Aug-2025 to 29-Aug-2025

Suite. From 4650 USD pp

02-Sep-2025 to 05-Sep-2025

Suite. From 4650 USD pp

16-Sep-2025 to 19-Sep-2025

Suite. From 4650 USD pp

30-Sep-2025 to 03-Oct-2025

Suite. From 4650 USD pp

14-Oct-2025 to 17-Oct-2025

Suite. From 4650 USD pp

28-Oct-2025 to 31-Oct-2025

Suite. From 4650 USD pp

11-Nov-2025 to 14-Nov-2025

Suite. From 4650 USD pp

25-Nov-2025 to 28-Nov-2025

Suite. From 4650 USD pp

02-Dec-2025 to 05-Dec-2025

Suite. From 4650 USD pp

09-Dec-2025 to 12-Dec-2025

Suite. From 4650 USD pp

23-Dec-2025 to 26-Dec-2025

Suite. From 5130 USD pp

06-Jan-2026 to 09-Jan-2026

Suite. From 4800 USD pp

13-Jan-2026 to 16-Jan-2026

Suite. From 4800 USD pp

03-Feb-2026 to 06-Feb-2026

Suite. From 4800 USD pp

10-Feb-2026 to 13-Feb-2026

Suite. From 4800 USD pp

17-Feb-2026 to 20-Feb-2026

Suite. From 4800 USD pp

10-Mar-2026 to 13-Mar-2026

Suite. From 4800 USD pp

31-Mar-2026 to 03-Apr-2026

Suite. From 4800 USD pp

07-Apr-2026 to 10-Apr-2026

Suite. From 4800 USD pp

14-Apr-2026 to 17-Apr-2026

Suite. From 4800 USD pp

Wild Earth Travel

Small Ships, Big Adventures

wildearth-travel.com

info@wildearth-travel.com

04-Aug-2026 to 07-Aug-2026

Suite. From 4800 USD pp

18-Aug-2026 to 21-Aug-2026

Suite. From 4800 USD pp

25-Aug-2026 to 28-Aug-2026

Suite. From 4800 USD pp

01-Sep-2026 to 04-Sep-2026

Suite. From 4800 USD pp

15-Sep-2026 to 18-Sep-2026

Suite. From 4800 USD pp

29-Sep-2026 to 02-Oct-2026

Suite. From 4800 USD pp

13-Oct-2026 to 16-Oct-2026

Suite. From 4800 USD pp

27-Oct-2026 to 30-Oct-2026

Suite. From 4800 USD pp

24-Nov-2026 to 27-Nov-2026

Suite. From 4800 USD pp

01-Dec-2026 to 04-Dec-2026

Suite. From 4800 USD pp

08-Dec-2026 to 11-Dec-2026

Suite. From 4800 USD pp

22-Dec-2026 to 25-Dec-2026

Suite. From 5280 USD pp

05-Jan-2027 to 08-Jan-2027

Suite. From 5450 USD pp

12-Jan-2027 to 15-Jan-2027

Suite. From 5450 USD pp

Wild Earth Travel
Small Ships, Big Adventures

0800 945 3327 (within New Zealand) | +64 (0) 3 365 1355 | **1800 107 715** (within Australia)

info@wildearth-travel.com | wildearth-travel.com

Wild Earth Travel

Small Ships, Big Adventures

wildearth-travel.com

info@wildearth-travel.com

PRICING

19-Jan-2027 to 22-Jan-2027

Suite. From 5450 USD pp

02-Feb-2027 to 05-Feb-2027

Suite. From 5450 USD pp

09-Feb-2027 to 12-Feb-2027

Suite. From 5450 USD pp

16-Feb-2027 to 19-Feb-2027

Suite. From 5450 USD pp

02-Mar-2027 to 05-Mar-2027

Suite. From 5450 USD pp

09-Mar-2027 to 12-Mar-2027

Suite. From 5450 USD pp

16-Mar-2027 to 19-Mar-2027

Suite. From 5450 USD pp

30-Mar-2027 to 02-Apr-2027

Suite. From 5450 USD pp

06-Apr-2027 to 09-Apr-2027

Suite. From 5450 USD pp

13-Apr-2027 to 16-Apr-2027

Suite. From 5450 USD pp

27-Apr-2027 to 30-Apr-2027

Suite. From 5450 USD pp

03-Aug-2027 to 06-Aug-2027

Suite. From 5450 USD pp

10-Aug-2027 to 13-Aug-2027

Suite. From 5450 USD pp

17-Aug-2027 to 20-Aug-2027

Suite. From 5450 USD pp

31-Aug-2027 to 03-Sep-2027

Suite. From 5450 USD pp

14-Sep-2027 to 17-Sep-2027

Suite. From 5450 USD pp

28-Sep-2027 to 01-Oct-2027

Suite. From 5450 USD pp

12-Oct-2027 to 15-Oct-2027

Suite. From 5450 USD pp

26-Oct-2027 to 29-Oct-2027

Suite. From 5450 USD pp

09-Nov-2027 to 12-Nov-2027

Suite. From 5450 USD pp

23-Nov-2027 to 26-Nov-2027

Suite. From 5450 USD pp

30-Nov-2027 to 03-Dec-2027

Suite. From 5450 USD pp



Wild Earth Travel

Small Ships, Big Adventures

wildearth-travel.com

info@wildearth-travel.com

07-Dec-2027 to 10-Dec-2027

Suite. From

5450 USD pp

21-Dec-2027 to 24-Dec-2027

Suite. From

5450 USD pp

Wild Earth Travel

Small Ships, Big Adventures

0800 945 3327 (within New Zealand) | +64 (0) 3 365 1355 | **1800 107 715** (within Australia)

info@wildearth-travel.com | **wildearth-travel.com**