



DISCOVERING GREENLAND - EXPEDITION FROM REYKJAVIK TO NUUK

Wild nature and traditional communities

Sailing from Reykjavik, we cross the Denmark Strait and explore remote areas that few get to visit. There, you'll discover Norse ruins, visit traditional communities, explore UNESCO-listed historical sites, and learn about the culture of the Arctic peoples.

Wildlife and ice sculpted landscapes

Witness the majestic landscapes of Greenland as we explore deep fjords cut into breathtaking mountain landscapes, cruise to cascading tidewater glaciers, delight in the otherworldly beauty of crystalline icebergs, and spot aquatic mammals along the way.

Please check for adjusted prices based on the option to fly from Copenhagen instead of Reykjavik.



ITINERARY

DAY 1 Reykjavik

Explore the world's northernmost capital

Your adventure begins in Reykjavik.

A laid-back city of art, culture and history, delightful Reykjavik is well worth spending some time getting to know.

Take a stroll along Laugavegur with its boutiques and outdoor shops, gaze in awe at the striking Hallgrímskirkja



Church, and drop in on the fascinating Reykjavik Art Museum.

If you have the time, we recommend booking a Pre-Programme with us and discovering some of Iceland's natural highlights before your cruise begins.

DAY 2-3 Crossing the Denmark Strait

In the wake of Vikings

We sail to Greenland across the Denmark Strait. This is the route taken by the Viking Erik the Red, who is credited as being the first European to have settled there. Sometimes we spot whales along the way, so keep a lookout.

During the two-day crossing, you'll have plenty of time to get to know the ship and all its onboard facilities. At the same time the Expedition Team will give presentations about the protocols of respectfully visiting the fragile natural areas and Indigenous Arctic communities. Now is the time to book excursions and maybe learn a few words of Greenlandic.

Primarily, however, this is a time of adjustment and enjoyment. You'll relish delicious meals in the onboard restaurants, listen to some amazing talks and simply get to relax and unwind on this comfortable ship. As we get closer to Greenland, or Kalaallit Nunaat as it is known you'll feel the anticipation and excitement building ... your adventure is about to begin!

DAY 4-7 Expedition days in south Greenland

Get straight into adventure mode

Over the next four days we'll be going full-on expedition style as we explore the maze of fjords, channels and islands in this spectacular and wild region. Local weather and ice conditions will determine where and when we land, but the Captain and Expedition Team are used to these conditions and know the best places to go.

On our landings, excursions, and activities we'll aim to visit Norse ruins, sail

into majestic fjords where beautifully sculpted icebergs glisten in the sun, and go on community visits to picturesque towns. You might land at the colourful and tranquil settlement of Qaqortoq with its beautiful lake, drop by Erik the Red's farm at Brattahlíð, and simply gaze in wonder at the spectacular mountainous landscapes of the scenic southern fjords.

As you'll discover, southern Greenland's rugged mountain ranges tower above scattered green meadows and fjords. It's a landscape sculpted by ice and weather over billions of years. The Norsemen settled here over a thousand years ago, but the harsh living conditions eventually saw them leave after only four centuries. Now, in this vast and mostly unpopulated wilderness, you'll enjoy a sense of tranquillity not often found in the modern world, so just relax, enjoy the nature, and learn all about what makes this region so special.

DAY 8-10 On expedition in southwest Greenland

Fjords, glaciers, and ghostly mining towns

The stretch of coast between the fjord systems of southern Greenland and Nuuk is as wild as can be. Long distances separate the few scattered settlements. And although the climate is still mild by Arctic standards the topography is rough, segmented by high mountain ranges half covered by ice and cut through by deep turquoise fjords. With very few inside passages, travelling here has been a challenge since ancient times. And it still is. Mother Nature is in charge here, meaning it's the perfect adventure playground for modern explorers.

On our way north, and always adapted to the local conditions, we'll get to know the landscapes of the so-called Mellemygden - the Middle Settlement of the Norse settlers. We'll also look for the ghostly mining town of Ivittuut, where the historically important mineral cryolite was mined, but where today the only inhabitants are shy musk oxen. And we'll sail into great fjords carved out over millennia by massive glaciers cascading down from the icecap.

Wildlife thrives in this isolated region. Join our Expedition Team on their wildlife watches either on board or on land, and keep your camera and binoculars ready for seabirds, nesting colonies, and whales feeding at sea. If we're lucky, we may even see one of the few musk ox herds living on the west Greenland coast.

DAY 11-12 Into the depth of Nuuk Fjord



Be on the lookout for wildlife and history

Get ready to explore a grand fjord system. Locally known as the Nuup Kangerlua, the fjords around Nuuk fan out in a somehow parallel network of interconnected waterways. They're topped by the Kangiussap Nuna peninsula and the ice cap, most notably in the so-called Nuuk Isfjord.

These are the lands of the ancient Norse Western Settlement, the northernmost area they managed to colonise in the Middle Ages. It was probably in Nuup Kangerlua where the descendants of the Vikings met the Thule people for the first time.

The fjords are dotted here and there by old Norse ruins and small Inuit settlements. Some are abandoned, like picturesque Qornoq, while others are thriving, such as Kapisillit and its 88 inhabitants. Relative proximity to Nuuk somehow disguises the fact that communities along Nuup Kangerlua were until very recently as isolated as any other in Greenland.

Weather and ice permitting, during the next two days we will explore the fjord system and enjoy the ever-changing mountain landscapes. We'll also try to reach the icy headwaters of Nuup Kangerlua and visit one of the Inuit villages, while always looking for hiking, ice cruising and wildlife watching opportunities.

DAY 13 Nuuk – the end of our expedition

Get acquainted with a small capital in a grand setting

We say a fond farewell to the ship, crew and Expedition Team as we end our voyage of discovery in Nuuk. The lively and compact capital is positively bustling compared to other places you will have visited - but at less than 20,000 residents, it's hardly a metropolis.

Visit the national museum to get an insight into life here 500 years ago and see the fascinating Qilakitsoq mummies. Otherwise, there are plentiful shopping opportunities - by Greenland standards - and a mix of cafes and restaurants to drop in on. If you have time before flying back home, Nuuk offers a fascinating window onto modern Greenland.

From here, you'll catch a flight back to Reykjavik, taking with you a wealth of fantastic memories that will no doubt stay with you forever.

DAY 14 Return to Reykjavík

See more of Reykjavik

Today you'll wake up in Reykjavik, where your adventure concludes. However, this means you have another chance to explore Iceland's stylish capital, if time allows.

If you want to discover more, you can join our optional Post-Programme before heading home. Or simply extend your stay and enjoy Reykjavik and its surrounding geothermal attractions.

Please Note:

Itineraries are subject to change.



Wild Earth Travel

Small Ships, Big Adventures

wildearth-travel.com

info@wildearth-travel.com

YOUR SHIP: FRIDTJOF NANSEN

YOUR SHIP:	Fridtjof Nansen
VESSEL TYPE:	Expedition
LENGTH:	140 m
PASSENGER CAPACITY:	530
BUILT/REFURBISHED:	2020

MS Fridtjof Nansen is the latest addition to Hurtigruten's fleet of custom built ships - and the next generation expedition ship. She will explore some of the most spectacular corners of the globe. Featuring Hurtigruten's revolutionary battery hybrid powered propulsion system, MS Fridtjof Nansen will be a near identical twin to her sister ship MS Roald Amundsen. Combining state of the art technology and premium on board experience with Hurtigruten's 125 years of experience and unparalleled destinations, the two Norwegian built ships introduces the next generation of adventure travel.

Cabins and public areas

The stunning scenery will be reflected in a rich and comfortable interior design. Scandinavian materials from nature, such as granite, oak, birch and wool will be used to create relaxed and stylish cabins and public areas. All cabins are outside, 50 % will have private balconies, aft suites will feature private outdoor hot tubs with spectacular views.

Science Center

The core of the onboard experience is the Nansen Science Center, an edutainment venue to guests and crew meet to create a deeper understanding of the areas we explore. Nansen

Science Center will also be the on board HQ for the Expedition Team.

Restaurants

MS Fridtjof Nansen's three restaurants will host a variety of dining options, with menus drawn from our rich Norwegian and Nordic tradition, as well as international cuisine and local inspiration. Whether enjoying your meal at Aune Main Dining, Fredheim - the informal international meeting place, or the specialty restaurant Lindstrøm, you will indulge in low key yet refined, modern Norwegian Nordic cooking - where our honest and delicious cuisine reflects our destinations.

After a day of exploring new destinations, guests can relax and rejuvenate in the elegant Explorer Lounge, a large gym and Wellness center, or enjoy the scenery and sunsets on the massive in- and outdoor Observation Decks with the aft infinity pool and hot tubs as one of the highlights.

Everything you need for an expedition cruise

Each expedition voyage is accompanied by a hand-picked team of specialists and modern-day explorers. Highly experienced, passionate and knowledgeable, the Expedition Team will be your guides and guardians on your voyage of exploration, instructing you on safety, sustainability and science. MS Fridtjof Nansen will feature a variety of custom built expedition equipment, including kayaks, a fleet of Blueeye underwater drones and Expedition Boats for safe landings in remote areas.

In the footsteps of a great explorer

The newest addition to our fleet will honor the heritage of her namesake - the Norwegian explorer, scientist, humanitarian and Nobel Peace Prize laureate Fridtjof Nansen. Known for his

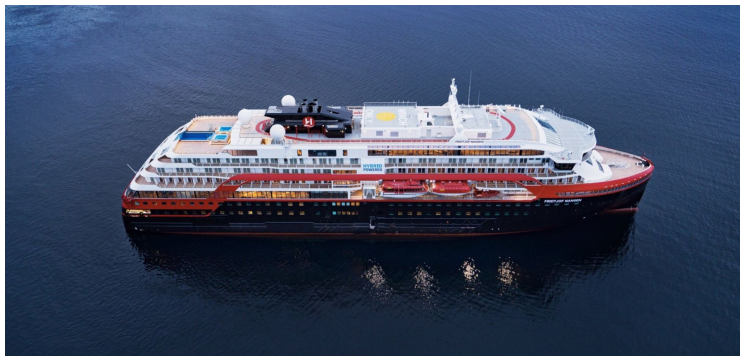
Wild Earth Travel
Small Ships, Big Adventures

0800 945 3327 (within New Zealand) | +64 (0) 3 365 1355 | **1800 107 715** (within Australia)

info@wildearth-travel.com | wildearth-travel.com



innovations in Arctic expeditions, Nansen led the first crossing of Greenland on cross-country skis. He is perhaps most famous for his attempt to reach the geographical North Pole during the Fram Expedition (1893-1896). Interestingly, after Nansen's Fram expedition, the ship was passed on to another great explorer who secretly planned an expedition to the South Pole - Roald Amundsen.



d Amundsen.

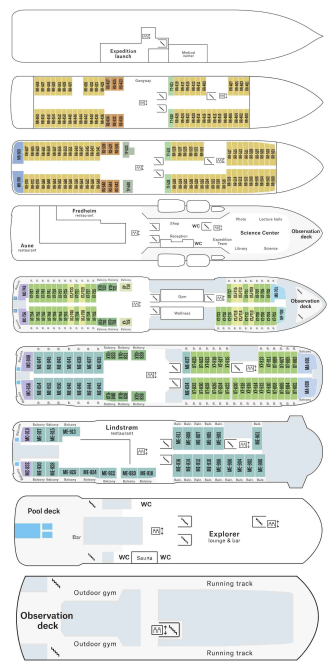


Wild Earth Travel
Small Ships, Big Adventures

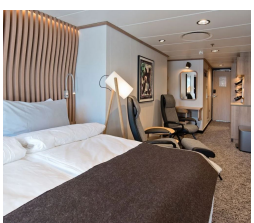
wildearth-travel.com

info@wildearth-travel.com

INSIDE YOUR SHIP



Arctic Superior. From



Expedition Suite. From



Polar Outside. From



Wild Earth Travel
Small Ships, Big Adventures

0800 945 3327 (within New Zealand) | +64 (0) 3 365 1355 | **1800 107 715** (within Australia)

info@wildearth-travel.com | **wildearth-travel.com**



Wild Earth Travel

Small Ships, Big Adventures

wildearth-travel.com

info@wildearth-travel.com

PRICING

02-Jun-2026 to 15-Jun-2026

Polar Outside. From	16347 AUD pp
Arctic Superior. From	17940 AUD pp
Expedition Suite. From	22430 AUD pp

Wild Earth Travel
Small Ships, Big Adventures

0800 945 3327 (within New Zealand) | +64 (0) 3 365 1355 | **1800 107 715** (within Australia)

info@wildearth-travel.com | wildearth-travel.com