



Wild Earth Travel

Small Ships, Big Adventures

wildearth-travel.com

info@wildearth-travel.com

CRUISING THE HISTORIC CITIES OF THE BALTIC SEA — WITH SMITHSONIAN JOURNEYS

In alliance with Smithsonian Journeys.

This cruise is part of a collection of PONANT voyages that are specially-tailored for English-speaking travelers who want to engage with the world. In addition to the usual elements of the PONANT experience, the listed price for these voyages includes transfers to and from the ship, talks and discussions aboard ship by world class experts, and a shore excursion or activity in each port of call that encourages guests to embrace the sights, sounds, tastes, and smells of the local environment and culture.

Join PONANT and Smithsonian Journeys for an extraordinary 8-day voyage through the Baltic Sea featuring a specially arranged, exclusive presentation and discussion aboard with former President of Poland and Nobel Peace Prize-laureate Lech Wałsa while in Gdansk, Poland.

The Baltic Sea has been a thoroughfare of trade since the days of the Vikings. We will visit the great cities that ring its shores and experience a comingling of cosmopolitan life with centuries of rich history.

Begin in dynamic Helsinki. Located on a peninsula surrounded by almost 300 islands, the vibrant capital of Finland will charm you with its Art Nouveau architecture.

Le Champlain sails first to Tallinn, an important hub for the Hanseatic League in the Baltic Sea around the 13th century. Its Old Town is a UNESCO Heritage Site and retains remarkably

well-preserved ramparts, public buildings, merchant houses, and warehouses.

You call next in cosmopolitan Stockholm, whose lively Gamla Stan (old town) located on a compact island showcases narrow cobblestone streets lined with 17th- and 18th-century buildings, including the Royal Palace.

On Gotland--the largest island in the Baltic Sea--you stop at the beautifully preserved medieval town of Visby, once a stronghold of the Hanseatic League.

Klaipeda is your gateway to the UNESCO World Heritage Curonian Peninsula and an opportunity to learn the traditional art of beekeeping or to immerse yourself in the local food and folklore of Lithuania.

You sail next to Gdansk, a city with a 1000 year history whose shipyard served as the birthplace of the Solidarity Trade Union in 1980. The wave of dissent arising from the Solidarity movement helped lead to Polish independence from the Soviet Union in 1991.

Call at the small Danish island of Bornholm, whose lush farmland and rich herring fisheries share the land with the ruins of a medieval fortress and four of the ancient round churches for which Denmark is noted.

End in sophisticated Copenhagen, which displays 800 years of

Wild Earth Travel

Small Ships, Big Adventures

0800 945 3327 (within New Zealand) | +64 (0) 3 365 1355 | **1800 107 715** (within Australia)

info@wildearth-travel.com | **wildearth-travel.com**

Wild Earth Travel

Small Ships, Big Adventures

wildearth-travel.com

info@wildearth-travel.com

royal history at the stunning Christiansborg Palace, once home to kings and queens and now home to the Danish Parliament.



Parliament.

ITINERARY

Day 1 Helsinki

Seated in the southern peninsula of Finland, Helsinki offers the buzz of a cosmopolitan city that has opted for both elegance and beauty. Explore its historical centre where the soft hues of neoclassical buildings are juxtaposed with spectacular modern constructions. The bustling Kallio district is teeming with boutiques and restaurants where you can taste some local specialities like graavilohi - a sweet, marinated, aromatic salmon dish. Keskuspuisto park, a stone's throw from the centre, is a good place to sit and unwind.

Day 2 Tallinn

Opening onto the Baltic sea, to the far north of Estonia, the town of Tallinn will win you over with the picturesque charm of its architecture. You can meander through its little streets in the heart of the medieval centre where its gothic town hall has been standing since 1404. The Kiek in de Kok tower, the Orthodox Alexander Nevski cathedral, or Toompea castle give visitors a taste of this town's rich past. The city was particularly active during the medieval period, as is demonstrated by the very beautiful monuments from this period that are still visible. Don't hesitate to lose yourself in the heart of Tallinn, listed as a UNESCO World Heritage Site.

Day 3 Stockholm

The capital of Sweden occupies an archipelago in the east of the country at the junction of Malar Lake and the Baltic sea. In Gamla stan, meaning "old town" in Swedish, you can stroll at your leisure in picturesque medieval streets until you reach the majestic Royal Palace. On the green island of Djurgarden, you can visit several very different kinds of cultural centres: the Vasa museum is dedicated to a 17th century three-mast, the ecomuseum of Skansen presents traditional customs, and the ABBA museum is dedicated to the legendary pop group. For a fantastic, all-encompassing view of Stockholm, you can take a ride in SkyView, a glass-encased sphere gondola that takes you to the top of the world's largest building, the Ericsson Globe, a Stockholm landmark.

Day 4 Visby, Gotland

This old Hanseatic city lies to the west coast of Gotland, a Swedish island in the Baltic sea. Pass through the spectacular Visby fortifications and visit the old town, a UNESCO World Heritage site. You'll discover the grand Visby homes of rich merchants as well as the lovely low wooden houses in the little cobbled streets. Don't miss Saint Mary's cathedral with its octagonal steeples, as well as Powder tower along the fortifications. Make sure you stop over in one of the rose-adorned cafes; indeed roses abound in this town where you can taste one of the island's specialities, namely saffron pancakes with red fruit.

Day 5 Klaipeda

Klaipeda was founded in the 13th century by Christian crusaders from the

Wild Earth Travel

Small Ships, Big Adventures

0800 945 3327 (within New Zealand) | +64 (0) 3 365 1355 | **1800 107 715** (within Australia)

info@wildearth-travel.com | wildearth-travel.com

Wild Earth Travel

Small Ships, Big Adventures

wildearth-travel.com

info@wildearth-travel.com

German Order of Teutonic Knights. Its strategic location on the edge of the Baltic Sea has made it a source of conflict between Germans, Poles, Lithuanians and even the French since its creation. Today, the legacy of Klaipeda's rich history is a great multiculturalism. This is the main port of Lithuania and the country's third largest city. The beautiful landscapes of the surrounding Baltic coast make it a popular tourist destination. The city centre is very pleasant to visit due to its architecture blending German and Scandinavian influences.

can try out the smorrebrod, traditional danish sandwiches made with ham, cheese or smoked fish.

Please note:

Itineraries are subject to change.

Day 6 Gdansk

This ravishing city on the Baltic sea is nicknamed "the golden door of Poland", and you'll understand why when you see its beautiful Hanseatic architecture. You'll be charmed by the mouldings and gables that enhance the colourful façades of the houses. Along the Vistula Quays, you can take a pleasant stroll among the crafts shops. In elegant Mariacka street, the amber jewellers will most certainly tempt you into their boutiques. You can visit the church of Saint-Mary and its astronomic clock. Not far, the majestic Long Market square offers the famous Artus Court and the rich Gdansk History Museum.

Day 7 Gudhjem, Bornholm

Lying in the south-west of the Baltic Sea, the medieval village of Gudhjem, on the island of Bornholm, is one of the most visited and most popular villages in Denmark. As you stroll along its picturesque streets, you will fall under the spell of its varied landscapes, its easy way of life, and the authenticity of this charming town with half-timbered houses topped with red roofs, in the Danish tradition. It is here, along these charming streets, that the first herring smokehouses were built in the mid-19th century, attracting all the region's fishermen. Tucked away in a gorgeous natural setting composed of rocky cliffs, dense forests and beaches of white sand, Gudhjem will provide an unforgettable interlude where time will seem to stand still.

Day 8 Copenhagen

Connected to the far eastern side of Sealand island, a few kilometres away from the Swedish coasts, Copenhagen offers you the high colour of Scandinavian capitals. You can discover the city's riches that weaves through the canal networks through the historical districts of Christiansborg and Nyhavn. Many palaces provide an aperçu of Danish history. For eating, you

Wild Earth Travel

Small Ships, Big Adventures

0800 945 3327 (within New Zealand) | +64 (0) 3 365 1355 | **1800 107 715** (within Australia)

info@wildearth-travel.com | **wildearth-travel.com**

Wild Earth Travel

Small Ships, Big Adventures

wildearth-travel.com

info@wildearth-travel.com

YOUR SHIP: LE CHAMPLAIN

YOUR SHIP:	Le Champlain
VESSEL TYPE:	Luxury
LENGTH:	127 metres
PASSENGER CAPACITY:	92 cabins
BUILT/REFURBISHED:	2017/2018

Featuring innovative and environmentally-friendly equipment, elegantly designed cabins, spacious suites with large windows, and lounge areas that open onto the outside, this new limited-capacity yacht boasting just 92 cabins and suites will offer you a truly unique cruising experience.

As the first ship in a new series, Le Champlain will embody the unique atmosphere that is the cruise line's hallmark: a subtle blend of refinement, intimacy and comfort.

Aboard this ship that flies the French flag, you will experience the incomparable pleasure of an intimate cruise, with the possibility of exploring an ever-increasing range of destinations in an ethnic-chic ambiance with luxury service.

Experience a luxurious setting where the accent is on authenticity and passion for travel.

RESTAURANTS

As it is an essential part of French culture, gastronomy will naturally have pride of place aboard this new ship. Through its two restaurants, Le Champlain will invite you on a journey to elegance and epicureanism.

In a relaxed atmosphere, a first dining area located on Deck 3 and able to seat 70 will serve grilled meats daily, along with a

variety of salads and desserts.

To the back of Deck 4, you will find a 260 m² panoramic restaurant which can accommodate all of our passengers in a single sitting. Designed differently to that on our other ships, this dining area, which opens onto the outside, will have a buffet of salads, desserts and cheeses at your disposal. Our discreet and attentive crew will provide table service for hot meals.

PUBLIC AREAS

Like Le Boreal and its sisterships, Le Champlain has many common areas that are designed and equipped to meet all of your needs while preserving the intimacy of each passenger.

A 140 m² reception area includes: A reception/concierge desk, An excursions desk, The ship's administrative services, The sales office, manned by our Guest Relations Officer, Our 50 m² boutique which sells clothing, jewellery, beauty products, postcards and various accessories, Toilets accessible to passengers with reduced mobility.

A new hydraulic platform with adjustable height provides: Easier boarding than on any other cruise ship, Easier Zodiac embarkation and disembarkation for expeditions, Easier access to the sea for swimming and practising various water sports such as kayaking or paddle-boarding.

A pool deck offering: A pool with a panoramic view, equipped with a counter-current swimming system, A pleasant solarium, An outdoor bar and lounge with armchairs and sofas.

A 200 m² main lounge which can accommodate all of our passengers to share convivial moments and to host activities organised during the day or evening.

Lastly, a theatre that seats 188, equipped with: The latest

Wild Earth Travel

Small Ships, Big Adventures

0800 945 3327 (within New Zealand) | +64 (0) 3 365 1355 | **1800 107 715** (within Australia)

info@wildearth-travel.com | **wildearth-travel.com**

Wild Earth Travel

Small Ships, Big Adventures



wildearth-travel.com

info@wildearth-travel.com

sound and lighting technology, A LED wall as the stage backdrop, for the projection of high-resolution images and videos.



and videos.

Wild Earth Travel

Small Ships, Big Adventures

0800 945 3327 (within New Zealand) | +64 (0) 3 365 1355 | **1800 107 715** (within Australia)

info@wildearth-travel.com | **wildearth-travel.com**

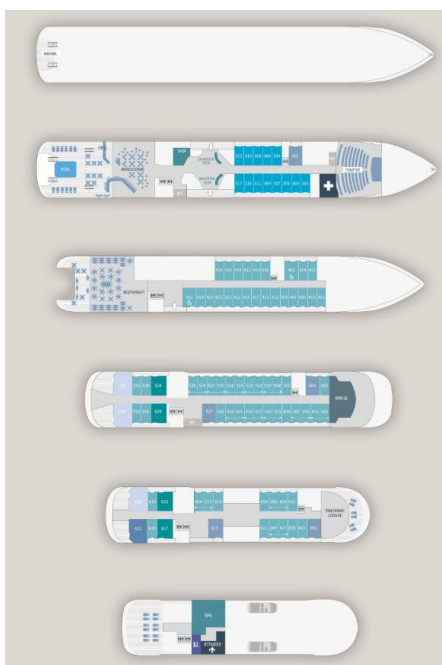
Wild Earth Travel

Small Ships, Big Adventures

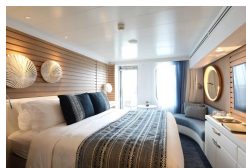
wildearth-travel.com

info@wildearth-travel.com

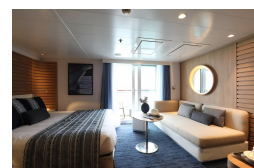
INSIDE YOUR SHIP



Deluxe Stateroom



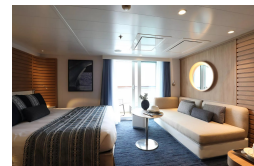
Deluxe Suite Deck 3



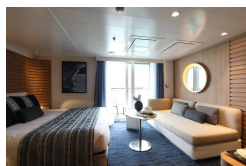
Deluxe Suite Deck 4



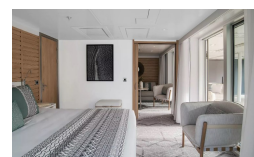
Deluxe Suite Deck 5



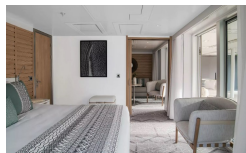
Deluxe Suite Deck 6



Grand Deluxe Suite Deck 5



Grand Deluxe Suite Deck 6



Owner's Suite



Wild Earth Travel
Small Ships, Big Adventures

0800 945 3327 (within New Zealand) | +64 (0) 3 365 1355 | 1800 107 715 (within Australia)

info@wildearth-travel.com | wildearth-travel.com

Wild Earth Travel

Small Ships, Big Adventures

wildearth-travel.com

info@wildearth-travel.com

PRICING

13-Aug-2025 to 20-Aug-2025

Deluxe Stateroom	15092 AUD pp
Prestige Deck 4	16732 AUD pp
Prestige Deck 5	17532 AUD pp
Prestige Deck 6	18502 AUD pp
Deluxe Suite Deck 3	25652 AUD pp
Deluxe Suite Deck 4	25652 AUD pp
Deluxe Suite Deck 6	25652 AUD pp
Deluxe Suite Deck 5	25652 AUD pp
Prestige Deck 5 Suite	34602 AUD pp
Prestige Deck 6 Suite	36392 AUD pp
Privilege Suite Deck 6	38172 AUD pp
Privilege Suite Deck 5	38172 AUD pp
Grand Deluxe Suite Deck 6	41912 AUD pp
Grand Deluxe Suite Deck 5	41912 AUD pp
Owner's Suite	44022 AUD pp

Deluxe Stateroom	13610 AUD pp
Prestige Deck 4	15060 AUD pp
Prestige Deck 5	15770 AUD pp
Prestige Deck 6	16640 AUD pp
Deluxe Suite Deck 3	22990 AUD pp
Deluxe Suite Deck 4	22990 AUD pp
Deluxe Suite Deck 5	22990 AUD pp
Deluxe Suite Deck 6	22990 AUD pp
Prestige Deck 5 Suite	30930 AUD pp
Prestige Deck 6 Suite	32510 AUD pp
Privilege Suite Deck 5	34110 AUD pp
Privilege Suite Deck 6	34110 AUD pp
Grand Deluxe Suite Deck 6	37430 AUD pp
Grand Deluxe Suite Deck 5	37430 AUD pp

03-Aug-2026 to 10-Aug-2026

Wild Earth Travel

Small Ships, Big Adventures

0800 945 3327 (within New Zealand) | +64 (0) 3 365 1355 | **1800 107 715** (within Australia)

info@wildearth-travel.com | wildearth-travel.com



Wild Earth Travel

Small Ships, Big Adventures



wildearth-travel.com

info@wildearth-travel.com

SPECIAL OFFERS

Online prices reflect the current brochure fare savings of up to 30%. Prices may change based on demand. Terms and conditions apply. This special offer is subject to availability. Please contact us for more details.



Wild Earth Travel

Small Ships, Big Adventures

0800 945 3327 (within New Zealand) | +64 (0) 3 365 1355 | **1800 107 715** (within Australia)

info@wildearth-travel.com | **wildearth-travel.com**