



Wild Earth Travel

Small Ships, Big Adventures

wildearth-travel.com

info@wildearth-travel.com

CRUISING THE GREEK ISLANDS OF THE SOUTHERN AEGEAN — WITH SMITHSONIAN JOURNEYS IN LUXURY

In alliance with Smithsonian Journeys.

This cruise is part of a collection of PONANT voyages that are specially-tailored for English-speaking travelers who want to engage with the world. In addition to the usual elements of the PONANT experience, the listed price for these voyages includes transfers to and from the ship, talks and discussions aboard ship by world class experts, and a shore excursion or activity in each port of call that encourages guests to embrace the sights, sounds, tastes, and smells of the local environment and culture.

This leisurely voyage through the heart of the Aegean is the perfect introduction to all that Homer's 'wine-dark sea' has to offer. Ancient sites, resonating with a mythical past, compete for your attention with the whitewashed homes of present-day farmers and the waterfront cafes and trendy boutiques of stylish jet-set getaways.

Departing from Athens, your first encounter with the rich history of the Aegean is the monumental Byzantine monastery on Patmos that guards the cave where St. John the Evangelist received his visions of the Apocalypse. Next is the medieval town of Rhodes, whose labyrinthine streets and splendid plazas are the legacy of the Crusader Knights of St. John.

Santorini offers a choice between browsing the sundrenched shops and restaurants of Thira and Oia, perched on cliffs overlooking the caldera of an ancient volcano, or exploring the Bronze Age site of Akrotiri, destroyed by a massive eruption of

Wild Earth Travel

Small Ships, Big Adventures

0800 945 3327 (within New Zealand) | +64 (0) 3 365 1355 | **1800 107 715** (within Australia)

info@wildearth-travel.com | **wildearth-travel.com**

Wild Earth Travel

Small Ships, Big Adventures

wildearth-travel.com

info@wildearth-travel.com

that volcano in the 2nd millennium BC, but preserved in ash and pumice just like Pompeii.

Amorgos represents a completely different aspect of life in the Aegean as it brings you face to face with age-old traditions of olive cultivation, herbal medicine, and religious devotion as they are still practiced in small villages in the mountains.

The island of Delos was sacred to the ancient Greeks--the birthplace of Apollo and Artemis, and home to countless shrines and temples--a veritable open-air museum. Mykonos, by contrast, is a sophisticated island resort with smart cafes and boutiques, where you will enjoy an afternoon and evening at leisure to soak in all that this dazzling town has to offer.

From Nafplion travel to Mycenae, the legendary home of Agamemnon and an important center of the extraordinary civilization that flourished here in the 2nd millennium BC, before continuing to Epidauros, the ancient shrine of Asklepios, whose ruins are dominated by a 4th-century BC theater that is one of the finest in Greece.

Your journey concludes upon return to Athens.



to Athens.

ITINERARY

Day 1 ATHENS

The Greek capital city is located on the edge of the Saronic gulf, in the east of the country. It bears a plural name in reference to the first villages that surround the Acropolis. You will be enchanted by the rocky plateau presided by its monuments listed as UNESCO World Heritage. In the city below, you can visit some of the liveliest districts in Athens: Plaka, with its maze of colourful streets, and where, in the evenings the drifting aroma of moussaka and garlic prawns will tickle your taste buds. The National Archaeological museum and the Cycladic Art Museum are also some of the city's key attractions and allow visitors to discover Athens' cultural past.

Day 2 PATMOS

Wild Earth Travel

Small Ships, Big Adventures

0800 945 3327 (within New Zealand) | +64 (0) 3 365 1355 | **1800 107 715** (within Australia)

info@wildearth-travel.com | **wildearth-travel.com**



Wild Earth Travel

Small Ships, Big Adventures

wildearth-travel.com

info@wildearth-travel.com

Patmos is one of the legendary must-see islands in the Dodecanese. This is where Saint John resided, presumed author of the last book in the Bible. The cave of the Apocalypse and the Saint John Monastery are dedicated to him. These sites, which are listed by UNESCO as World Heritage, are located at the top of a hillside planted with vines and orchards. On the shore, the crystalline coves of Kambos and Lampi offer absolutely gorgeous swimming areas.

Day 3 RHODES

With its particularly agreeable climate, the island of Rhodes invites you to walk its pathways and discover its immaculate villages and sumptuous medieval city, a UNESCO World Heritage site. At the centre of the island the mountains are covered in forest and on the western slopes we find vineyards and crops. Rhodes also owes much of its charm and its character to the Knights of St John who reigned over the island from 1310 to 1522 and built impressive defensive walls punctuated with majestic gateways. Do not miss this delightful island with its peaceful beaches and its large walkways, perpetuating the myth of the famous Colossus, the legendary statue that is one of the Seven Wonders of the World.

Day 4 SANTORINI

The spectacular volcanic island of Santorini stands out proud in the Cyclades. Its basalt cliffs offer particularly expansive views of the Aegean. To enjoy these views, you can head for the capital, Fira. Its floral belvederes of bougainvillea provide a bird's-eye view of several thousand metres of coastline. Further away, the gorgeous village of Oia looks like a stairway of blue and white houses on the slopes of the volcano. In the south of the island, you will be able to visit the stunning ruins of Akrotiri, an ancient city destroyed by an eruption and covered with a thick layer of lava stone.

Day 5 AMORGOS

It's no accident that the island of Amorgos was chosen as a shooting location for Luc Besson's film, *The Big Blue*. You too will fall under the charm of this island as your ship edges closer. Amorgos is the most easterly island in the Cyclades and stands out for its rocky inlets with crystal-clear water and its small, picturesque villages. This port of call will be your chance to visit one of the prettiest villages in the Cyclades, Chora, and discover its cobbled streets and whitewashed houses overlooked by a castle. Byzantine churches, windmills and courtyards brimming with flowers complete this typical tableau of timeless Greece.

Day 6 DELOS & MYKONOS

This legendary Cyclades island of Delos stands just a few miles southwest of Mykonos. The ceremonial solemnity of this ancient holy sanctuary will not leave you indifferent. The sheer size and importance of this UNESCO World Heritage site which covers over half of the island is thrilling in itself. From the Stoa of Antigonos, the Terrace of the Lions, to the carved marble animal statues, you will make discovery after discovery, against a backdrop of the Aegean stretching to the horizon. The theatre steps on the hillside are a particularly good place from which to enjoy the expansive view.

Nicknamed "little Venice", Mykonos is famous for its Alefkandra district where houses are built right on the water's edge. Their multi-coloured loggias are emblematic of this Cyclades island, as are the pelicans and windmills. You can get close up to the birds on the quaysides of the old port. Up on the hillside, you can see the windmill sails turning. In the cobbled streets of the pedestrian centre, bougainvillea bedeck immaculate facades. As you weave in and out of the little streets, snatches of coastline will undoubtedly call you to the island's beaches, the quietest of which can be found on the northern coast.

Day 7 NAFPLION

Wild Earth Travel

Small Ships, Big Adventures

0800 945 3327 (within New Zealand) | +64 (0) 3 365 1355 | **1800 107 715** (within Australia)

info@wildearth-travel.com | **wildearth-travel.com**



Wild Earth Travel

Small Ships, Big Adventures

wildearth-travel.com

info@wildearth-travel.com

The engaging town of Nafplion is staggered up green hillsides of the Argolic Gulf, to the east of the Peloponnese. Do not be surprised by its extremely varied cultural heritage. Some of the must-see visits are the ancient agora on the plateau of Akronafplia, Italianate arcades in Syntagma square as well as the baroque fortress of Palamidi on a hillside of the same name. At the top of the hill, views of the gulf and the surrounding mountains are simply awesome. If you want to chill out by the water's edge, walk along the Arvanitia promenade to a beautiful creek in the shade of cedars and cypresses.

Day 8 ATHENS

The Greek capital city is located on the edge of the Saronic gulf, in the east of the country. It bears a plural name in reference to the first villages that surround the Acropolis. You will be enchanted by the rocky plateau presided by its monuments listed as UNESCO World Heritage. In the city below, you can visit some of the liveliest districts in Athens: Plaka, with its maze of colourful streets, and where, in the evenings the drifting aroma of moussaka and garlic prawns will tickle your taste buds. The National Archaeological museum and the Cycladic Art Museum are also some of the city's key attractions and allow visitors to discover Athens' cultural past.

Please note:

Itineraries are subject to change.

Wild Earth Travel

Small Ships, Big Adventures

0800 945 3327 (within New Zealand) | +64 (0) 3 365 1355 | **1800 107 715** (within Australia)

info@wildearth-travel.com | **wildearth-travel.com**



Wild Earth Travel

Small Ships, Big Adventures

wildearth-travel.com

info@wildearth-travel.com

YOUR SHIP: LE BOUGAINVILLE

YOUR SHIP: Le Bougainville

VESSEL TYPE: Luxury

LENGTH:

PASSENGER CAPACITY: 92 cabins

BUILT/REFURBISHED: 2017/2018

Featuring innovative and environmentally-friendly equipment, elegantly designed cabins, spacious suites with large windows, and lounge areas that open onto the outside, this new limited-capacity yacht boasting just 92 cabins and suites will offer you a truly unique cruising experience.

As the first ship in a new series that remains true to the Ponant spirit, Le Bougainville will embody the unique atmosphere that is the cruise line's hallmark: a subtle blend of refinement, intimacy and comfort.

Aboard this ship that flies the French flag, you will experience the incomparable pleasure of an intimate cruise, with the possibility of exploring an ever-increasing range of destinations in an ethnic-chic ambiance with luxury service.

Experience a luxurious setting where the accent is on authenticity and passion for travel.

RESTAURANTS

As it is an essential part of French culture, gastronomy will naturally have pride of place aboard this new ship. Through its two restaurants, Le Bougainville will invite you on a journey to elegance and epicureanism.

In a relaxed atmosphere, a first dining area located on Deck 3

and able to seat 70 will serve grilled meats daily, along with a variety of salads and desserts.

To the back of Deck 4, you will find a 260 m² panoramic restaurant which can accommodate all of our passengers in a single sitting. Designed differently to that on our other ships, this dining area, which opens onto the outside, will have a buffet of salads, desserts and cheeses at your disposal. Our discreet and attentive crew will provide table service for hot meals.

PUBLIC AREAS

Like Le Boreal and its sisterships, Le Bougainville has many common areas that are designed and equipped to meet all of your needs while preserving the intimacy of each passenger.

A 140 m² reception area includes:

A reception/concierge desk, An excursions desk, The ship's administrative services, The sales office, manned by our Guest Relations Officer, Our 50 m² boutique which sells clothing, jewellery, beauty products, postcards and various accessories, Toilets accessible to passengers with reduced mobility.

A new hydraulic platform with adjustable height provides: Easier boarding than on any other cruise ship, Easier Zodiac embarkation and disembarkation for expeditions, Easier access to the sea for swimming and practising various water sports such as kayaking or paddle-boarding.

A pool deck offering: A pool with a panoramic view, equipped with a counter-current swimming system, A pleasant solarium, An outdoor bar and lounge with armchairs and sofas.

A 200 m² main lounge which can accommodate all of our passengers to share convivial moments and to host activities organised during the day or evening.

Wild Earth Travel

Small Ships, Big Adventures

0800 945 3327 (within New Zealand) | +64 (0) 3 365 1355 | **1800 107 715** (within Australia)

info@wildearth-travel.com | wildearth-travel.com

Wild Earth Travel

Small Ships, Big Adventures

wildearth-travel.com

info@wildearth-travel.com

Lastly, a theatre that seats 188, equipped with: The latest sound and lighting technology, A LED wall as the stage backdrop, for the projection of high-resolution images and videos.



and videos.

Wild Earth Travel

Small Ships, Big Adventures

0800 945 3327 (within New Zealand) | +64 (0) 3 365 1355 | **1800 107 715** (within Australia)

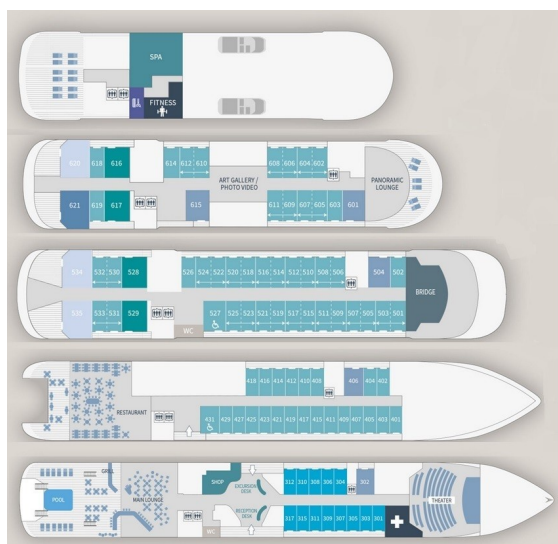
info@wildearth-travel.com | **wildearth-travel.com**



wildearth-travel.com

info@wildearth-travel.com

INSIDE YOUR SHIP

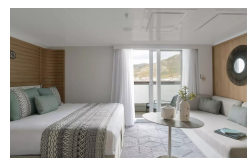


- Owner's Suite
Deck 6
- Privilege Suites
Deck 5-6
- Grand Deluxe Suites
Deck 5-6
- Prestige Suites
Deck 5-6
- Deluxe Suites
Deck 5-6
- Prestige Cabins
Deck 4-5-6
- Deluxe Cabins
Deck 3

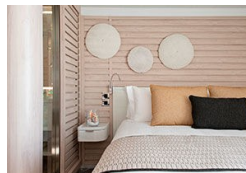
Deluxe Stateroom



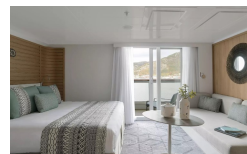
Deluxe Suite



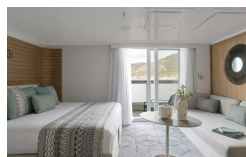
Deluxe Suite Deck 3



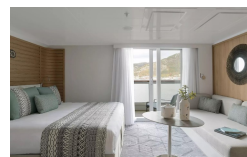
Deluxe Suite Deck 4



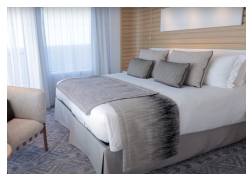
Deluxe Suite Deck 5



Deluxe Suite Deck 6



Grand Deluxe Suite



Grand Deluxe Suite Deck 5





Wild Earth Travel
Small Ships, Big Adventures

wildearth-travel.com **info@wildearth-travel.com**

PRICING

06-Jul-2025 to 13-Jul-2025

Deluxe Stateroom	10160 AUD pp
Prestige Stateroom Deck 4	11260 AUD pp
Prestige Stateroom Deck 5	11810 AUD pp
Prestige Stateroom Deck 6	12470 AUD pp
Deluxe Suite Deck 6	17290 AUD pp
Deluxe Suite Deck 4	17290 AUD pp
Deluxe Suite Deck 5	17290 AUD pp
Deluxe Suite	17290 AUD pp
Prestige Suite Deck 5	23340 AUD pp
Prestige Suite Deck 6	24550 AUD pp
Privilege Suite	25740 AUD pp
Privilege Suite Deck 6	25740 AUD pp
Grand Deluxe Suite	28280 AUD pp
Grand Deluxe Suite Deck 6	28280 AUD pp
Owner's Suite	30700 AUD pp

Deluxe Stateroom	11920 AUD pp
Prestige Stateroom Deck 4	13220 AUD pp
Prestige Stateroom Deck 5	13860 AUD pp
Prestige Stateroom Deck 6	14640 AUD pp
Deluxe Suite	20320 AUD pp
Deluxe Suite Deck 4	20320 AUD pp
Deluxe Suite Deck 5	20320 AUD pp
Deluxe Suite Deck 6	20320 AUD pp
Prestige Suite Deck 5	27430 AUD pp
Prestige Suite Deck 6	28850 AUD pp
Privilege Suite Deck 6	30270 AUD pp
Privilege Suite	30270 AUD pp
Grand Deluxe Suite Deck 6	33250 AUD pp
Grand Deluxe Suite	33250 AUD pp
Owner's Suite	34930 AUD pp

12-Oct-2025 to 19-Oct-2025

Wild Earth Travel

Small Ships, Big Adventures

wildearth-travel.com

info@wildearth-travel.com

PRICING

16-Jun-2026 to 23-Jun-2026

Deluxe Stateroom	9010 AUD pp
Prestige Deck 4	9970 AUD pp
Prestige Deck 5	10450 AUD pp
Prestige Deck 6	11020 AUD pp
Deluxe Suite Deck 5	15250 AUD pp
Deluxe Suite Deck 3	15250 AUD pp
Deluxe Suite Deck 4	15250 AUD pp
Deluxe Suite Deck 6	15250 AUD pp
Prestige Deck 5 Suite	20540 AUD pp
Prestige Deck 6 Suite	21590 AUD pp
Privilege Suite Deck 6	22650 AUD pp
Privilege Suite Deck 5	22650 AUD pp
Grand Deluxe Suite Deck 6	24870 AUD pp
Grand Deluxe Suite Deck 5	24870 AUD pp

08-Oct-2026 to 15-Oct-2026

Deluxe Stateroom	9010 AUD pp
Prestige Deck 4	9970 AUD pp
Prestige Deck 5	10450 AUD pp
Prestige Deck 6	11020 AUD pp
Deluxe Suite Deck 4	15250 AUD pp
Deluxe Suite Deck 5	15250 AUD pp
Deluxe Suite Deck 3	15250 AUD pp
Deluxe Suite Deck 6	15250 AUD pp
Prestige Deck 5 Suite	20540 AUD pp
Prestige Deck 6 Suite	21590 AUD pp
Privilege Suite Deck 6	22650 AUD pp
Privilege Suite Deck 5	22650 AUD pp
Grand Deluxe Suite Deck 5	24870 AUD pp
Grand Deluxe Suite Deck 6	24870 AUD pp

ADDITIONAL CHARGES:

Port Taxes 520 AUD pp

Wild Earth Travel

Small Ships, Big Adventures

0800 945 3327 (within New Zealand) | +64 (0) 3 365 1355 | **1800 107 715** (within Australia)

info@wildearth-travel.com | wildearth-travel.com



Wild Earth Travel

Small Ships, Big Adventures

wildearth-travel.com

info@wildearth-travel.com

SPECIAL OFFERS

Online prices reflect the current brochure fare savings of up to 30%. Prices may change based on demand. Terms and conditions apply. This special offer is subject to availability. Please contact us for more details.

Wild Earth Travel

Small Ships, Big Adventures

0800 945 3327 (within New Zealand) | +64 (0) 3 365 1355 | **1800 107 715** (within Australia)

info@wildearth-travel.com | **wildearth-travel.com**