



Wild Earth Travel

*Small Ships, Big Adventures*

[wildearth-travel.com](http://wildearth-travel.com)

[info@wildearth-travel.com](mailto:info@wildearth-travel.com)

## CRUISING THE AEGEAN: TURKEY AND THE GREEK ISLES – WITH SMITHSONIAN JOURNEYS

In alliance with Smithsonian Journeys.

This cruise is part of a collection of PONANT voyages that are specially-tailored for English-speaking travelers who want to engage with the world. In addition to the usual elements of the PONANT experience, the listed price for these voyages includes transfers to and from the ship, talks and discussions aboard ship by world class experts, and a shore excursion or activity in each port of call that encourages guests to embrace the sights, sounds, tastes, and smells of the local environment and culture.

Departing from Istanbul, capital of the Roman, Byzantine, and Ottoman Empires, your first stop is the port of Canakkale, from where you may travel south to explore ancient Troy, site of the war that is the subject of Homer's Iliad, or cross the Dardanelles to visit the World War I battlefield and cemeteries at Gallipoli.

Kusadasi on Turkey's Aegean coast is your gateway to Ephesus, one of the world's greatest archaeological sites, spanning the period from the Hellenistic world through the early Christian era. The immense excavation here includes temples of several Roman emperors, the iconic Library of Celsus, and the terraced hill houses, with their splendid mosaics and frescoes, overlooking the city below.

Leaving Turkey for the Greek Islands, spend a day on Patmos and discover the monumental Byzantine monastery that guards the cave where St. John the Evangelist received his visions of the Apocalypse. You will also have time to explore the island's

Chora (main town), home to an 11th-century monastery and to a labyrinth of picturesque, cobbled streets and arched alleyways.

Santorini offers a choice between browsing the sundrenched shops and restaurants of Thira and Oia, perched on cliffs overlooking the caldera of an ancient volcano, or exploring the Bronze Age site of Akrotiri, destroyed by a massive eruption of that volcano in the 2nd millennium BC, but preserved in ash and pumice much like Pompeii.

The island of Delos was sacred to the ancient Greeks--the birthplace of Apollo and Artemis, and home to countless shrines and temples--a veritable open-air museum. Mykonos, by contrast, is a sophisticated island resort with smart cafes and boutiques, where you will enjoy an afternoon and evening at leisure to soak in all that this dazzling town has to offer.

From Nafplion travel to Mycenae, the legendary home of Agamemnon and an important center of the extraordinary civilization that flourished here in the 2nd millennium BC, before continuing to Epidaurus, the ancient shrine of Asklepios, whose ruins are dominated by a 4th-century BC theater that is one of the finest in Greece.

Your journey concludes in Athens, Europe's oldest capital and birthplace of democracy.

Wild Earth Travel

*Small Ships, Big Adventures*

0800 945 3327 (within New Zealand) | +64 (0) 3 365 1355 | 1800 107 715 (within Australia)

[info@wildearth-travel.com](mailto:info@wildearth-travel.com) | [wildearth-travel.com](http://wildearth-travel.com)

# Wild Earth Travel

*Small Ships, Big Adventures*

[wildearth-travel.com](http://wildearth-travel.com)

[info@wildearth-travel.com](mailto:info@wildearth-travel.com)



Çanakkale is located on the edge of the straits of the Dardanelles, in the north-west of the country. On the promenade alongside the harbour, you'll come across a contemporary sculpture of an immense wooden horse evoking Odysseus' legendary scheme to take Troy. In the Archaeological Museum, you'll see artefacts found during the excavations made in the ancient city. Thirty or so kilometres south of Çanakkale, you can also visit the archaeological site of Troy, a UNESCO World Heritage site. Rising out of the luxuriant Mediterranean vegetation, you'll see many stone walls, sculptures and inscriptions, as well as a theatre with stone tiers.

## Day 3 Kusadasi

The attractive seaside resort of Kusadasi is located in a gulf on the western coast of Turkey. You can bathe there in clear waters or stroll along the coastal walk, in the shade of palms. In the historical district, you can take a mosey down the narrow streets and explore the colourful shops in the bazaar. Close by, the Ephesus archaeological site in the hillsides provides an opportunity to discover the ruins of one of the most famous cities of Antiquity.

## Day 4 Patmos

Patmos is one of the legendary must-see islands in the Dodecanese. This is where Saint John resided, presumed author of the last book in the Bible. The cave of the Apocalypse and the Saint John Monastery are dedicated to him. These sites, which are listed by UNESCO as World Heritage, are located at the top of a hillside planted with vines and orchards. On the shore, the crystalline coves of Kambos and Lampi offer absolutely gorgeous swimming areas.

## Day 5 Santorini

The spectacular volcanic island of Santorini stands out proud in the Cyclades. Its basalt cliffs offer particularly expansive views of the Aegean. To enjoy these views, you can head for the capital, Fira. Its floral belvederes of bougainvillea provide a bird's-eye view of several thousand metres of coastline. Further away, the gorgeous village of Oia looks like a stairway of blue and white houses on the slopes of the volcano. In the south of the island, you will be able to visit the stunning ruins of Akrotiri, an ancient city destroyed by an eruption and covered with a thick layer of lava stone.

democracy.

## ITINERARY

### Day 1 Istanbul

Located on the Bosphorus, Istanbul is one of the most beautiful of all Turkish cities. Named Byzantium when founded by the Greeks, and then Constantinople under the Roman Empire, this city is steeped in history and, for this reason, is a listed UNESCO World Heritage site. Located on Sultanahmet hill, the great Blue Mosque, the mysterious Hagia Sophia and the vast Topkapi palace and its countless mosaics, dominate the Marmara Sea. In the Beyazit district, the Grand Bazaar allows to discover elegant covered passages. A little further away, delicate aroma of loukoum and spices will draw the visitors' attention at the Egyptian Bazaar.

### Day 2 Canakkale

Wild Earth Travel

*Small Ships, Big Adventures*

0800 945 3327 (within New Zealand) | +64 (0) 3 365 1355 | 1800 107 715 (within Australia)

[info@wildearth-travel.com](mailto:info@wildearth-travel.com) | [wildearth-travel.com](http://wildearth-travel.com)



# Wild Earth Travel

*Small Ships, Big Adventures*



[wildearth-travel.com](http://wildearth-travel.com)

[info@wildearth-travel.com](mailto:info@wildearth-travel.com)

## Day 6 Delos & Mykonos

This legendary Cyclades island of Delos stands just a few miles southwest of Mykonos. The ceremonial solemnity of this ancient holy sanctuary will not leave you indifferent. The sheer size and importance of this UNESCO World Heritage site which covers over half of the island is thrilling in itself. From the Stoa of Antigonos, the Terrace of the Lions, to the carved marble animal statues, you will make discovery after discovery, against a backdrop of the Aegean stretching to the horizon. The theatre steps on the hillside are a particularly good place from which to enjoy the expansive view.

Nicknamed "little Venice", Mykonos is famous for its Alefkandra district where houses are built right on the water's edge. Their multi-coloured loggias are emblematic of this Cyclades island, as are the pelicans and windmills. You can get close up to the birds on the quaysides of the old port. Up on the hillside, you can see the windmill sails turning. In the cobbled streets of the pedestrian centre, bougainvillea bedeck immaculate facades. As you weave in and out of the little streets, snatches of coastline will undoubtedly call you to the island's beaches, the quietest of which can be found on the northern coast.

## Day 7 Nafplion

The engaging town of Nafplion is staggered up green hillsides of the Argolic Gulf, to the east of the Peloponnese. Do not be surprised by its extremely varied cultural heritage. Some of the must-see visits are the ancient agora on the plateau of Akronafplia, Italianate arcades in Syntagma square as well as the baroque fortress of Palamidi on a hillside of the same name. At the top of the hill, views of the gulf and the surrounding mountains are simply awesome. If you want to chill out by the water's edge, walk along the Arvanitia promenade to a beautiful creek in the shade of cedars and cypresses.

## Day 8 Athens

The Greek capital city is located on the edge of the Saronic gulf, in the east of the country. It bears a plural name in reference to the first villages that surround the Acropolis. You will be enchanted by the rocky plateau presided by its monuments listed as UNESCO World Heritage. In the city below, you can visit some of the liveliest districts in Athens: Plaka, with its maze of colourful streets, and where, in the evenings the drifting aroma of moussaka and garlic prawns will tickle your taste buds. The National Archaeological museum and

the Cycladic Art Museum are also some of the city's key attractions and allow visitors to discover Athens' cultural past.

Please note:

Itineraries are subject to change.



Wild Earth Travel

*Small Ships, Big Adventures*

0800 945 3327 (within New Zealand) | +64 (0) 3 365 1355 | 1800 107 715 (within Australia)

[info@wildearth-travel.com](mailto:info@wildearth-travel.com) | [wildearth-travel.com](http://wildearth-travel.com)



# Wild Earth Travel

*Small Ships, Big Adventures*



[wildearth-travel.com](http://wildearth-travel.com)

[info@wildearth-travel.com](mailto:info@wildearth-travel.com)

## YOUR SHIP: LE BOREAL

<b>YOUR SHIP:</b>	<b>Le Boreal</b>
<b>VESSEL TYPE:</b>	<b>Luxury Expedition / Cruise Ship</b>
<b>LENGTH:</b>	<b>142 meters</b>
	<b>264 (in twin cabins, 200 in</b>
<b>PASSENGER CAPACITY:</b>	<b>Antarctica)</b>
<b>BUILT/REFURBISHED:</b>	<b>2011</b>

A superb mega-yacht with 132 cabins, she is the fruit of the expertise of the Italian Fincantieri shipyard and French sophistication, as interpreted by designer Jean-Philippe Nuel. Le Boreal remains faithful to our philosophy - to create a unique atmosphere, a subtle blend of luxury, intimacy and well-being. Superior materials, discreet elegance and a tasteful decor combined with exterior and interior lines to reflect a nautical mood, subtly revisited. On board, soothing neutral tones are enlivened by splashes of red, our signature theme linking tradition and innovation to create personal touches in the spirit of a "private yacht".

### Cuisine

Loyal to the great French tradition, the haute cuisine on board is worthy of the finest restaurants, where discreet, attentive service is the hallmark.

Our two restaurants welcome you for breakfasts, lunch and dinner. The Gastronomic Restaurant, with a capacity of 268 persons, is situated on Le Liberte Deck and serves you French and international cuisine accompanied by fine wine. On the Grill Restaurant, you will have the opportunity to eat outside

and enjoy buffet lunch and themed dinner.

### Life On Board

Whether you want to join other guests in the theatre or games area (Wii™ consoles, etc), or relax on your own in a quiet corner of the library, Le Boreal has been designed to meet the needs of every guest.

Everything has been done to preserve the independence of each guest to suit their personal tastes: lounges for lectures and shows, a spa in partnership with Carita™, but also more intimate spaces such as the library and internet corner. Comfortable cabins, nearly all with private balcony, are available for families either as triples or as communicating cabins. There is also a games area with Wii™ consoles, children's menus, and a baby-sitting service. Just as if you were on a private yacht, your time is your own to do as you please.

Fitted with the latest equipment (Kinesis Wall, running machine) and in partnership with the famous Carita™ brand, the Beauty Centre on Le Boreal welcomes you for some unforgettable moments of relaxation and pampering (beauty treatments, hairdresser, hammam, balneotherapy).



Wild Earth Travel

*Small Ships, Big Adventures*

0800 945 3327 (within New Zealand) | +64 (0) 3 365 1355 | 1800 107 715 (within Australia)

[info@wildearth-travel.com](mailto:info@wildearth-travel.com) | [wildearth-travel.com](http://wildearth-travel.com)

# Wild Earth Travel

*Small Ships, Big Adventures*



[wildearth-travel.com](http://wildearth-travel.com)

[info@wildearth-travel.com](mailto:info@wildearth-travel.com)



eotherapy).

Wild Earth Travel

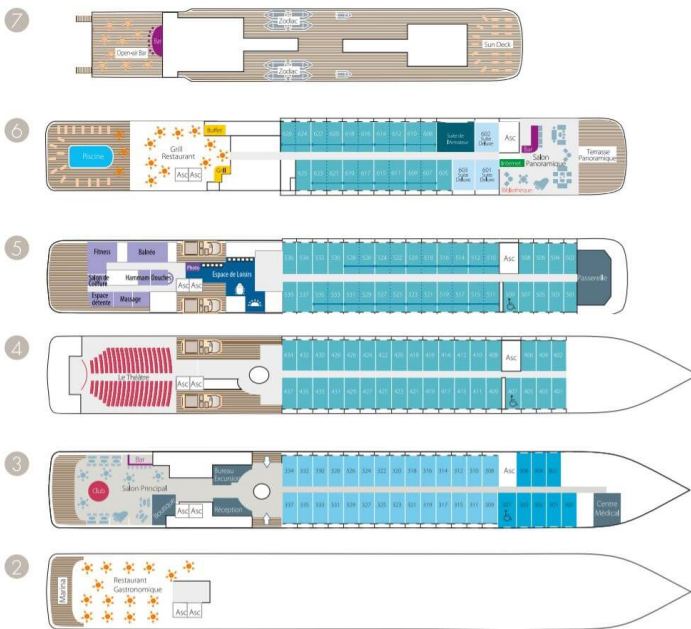
*Small Ships, Big Adventures*

0800 945 3327 (within New Zealand) | +64 (0) 3 365 1355 | 1800 107 715 (within Australia)

[info@wildearth-travel.com](mailto:info@wildearth-travel.com) | [wildearth-travel.com](http://wildearth-travel.com)



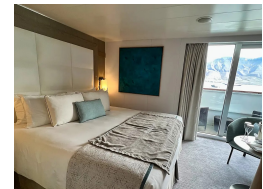
## INSIDE YOUR SHIP



Deluxe Stateroom



Deluxe Suite



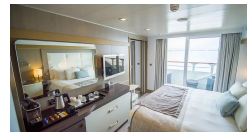
Prestige Deck 4



Prestige Deck 5



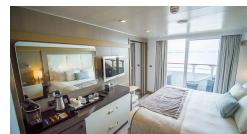
Prestige Deck 5 Suite



Prestige Deck 6



Prestige Deck 6 Suite



Superior Stateroom





# Wild Earth Travel

*Small Ships, Big Adventures*



[wildearth-travel.com](http://wildearth-travel.com)

[info@wildearth-travel.com](mailto:info@wildearth-travel.com)

## PRICING

25-Jun-2026 to 02-Jul-2026

Superior Stateroom	8470 AUD pp
Deluxe Stateroom	9160 AUD pp
Prestige Deck 4	10130 AUD pp
Prestige Deck 5	10610 AUD pp
Prestige Deck 6	11200 AUD pp
Deluxe Suite	15480 AUD pp
Prestige Deck 5 Suite	20850 AUD pp
Prestige Deck 6 Suite	21910 AUD pp

**ADDITIONAL CHARGES:**

Port Taxes 520 USD pp



Wild Earth Travel

*Small Ships, Big Adventures*

0800 945 3327 (within New Zealand) | +64 (0) 3 365 1355 | 1800 107 715 (within Australia)

[info@wildearth-travel.com](mailto:info@wildearth-travel.com) | [wildearth-travel.com](http://wildearth-travel.com)



# Wild Earth Travel

*Small Ships, Big Adventures*



[wildearth-travel.com](http://wildearth-travel.com)

[info@wildearth-travel.com](mailto:info@wildearth-travel.com)

## SPECIAL OFFERS

Online prices reflect the current brochure fare savings of up to 30%. Prices may change based on demand. Terms and conditions apply. This special offer is subject to availability. Please contact us for more details.



Wild Earth Travel

*Small Ships, Big Adventures*

0800 945 3327 (within New Zealand) | +64 (0) 3 365 1355 | 1800 107 715 (within Australia)

[info@wildearth-travel.com](mailto:info@wildearth-travel.com) | [wildearth-travel.com](http://wildearth-travel.com)