

# Wild Earth Travel

*Small Ships, Big Adventures*

**wildearth-travel.com**

**info@wildearth-travel.com**

## CRUISING SOUTHERN SPAIN AND PORTUGAL – WITH SMITHSONIAN JOURNEYS

In alliance with Smithsonian Journeys. This cruise is part of a collection of PONANT voyages that are specially-tailored for English-speaking travelers who want to engage with the world. In addition to the usual elements of the PONANT experience, the listed price for these voyages includes transfers to and from the ship, talks and discussions aboard ship by world class experts, and a shore excursion or activity in each port of call that encourages guests to embrace the sights, sounds, tastes, and smells of the local environment and culture. Set sail aboard Le Dumont-d'Urville on an exceptional 8-day itinerary that will take you along the Portuguese and Spanish coasts, from Lisbon to Barcelona. Your voyage begins in Lisbon, Portugal's capital. Lisbon boasts two UNESCO World Heritage sites, the Jeronimos Monastery and the Belem Tower. Enjoy strolling through the streets of this city of seven hills, soaking up the local zest for life. You head first to the rich cultural landscape of Andalusia, where you will discover Cadiz, one of the country's oldest cities, and enchanting Malaga. These calls will allow for visits to the superb palace of the Alcazar in Seville and to the magnificent Alhambra of Granada, both UNESCO World Heritage Sites. Your ship will then sail to Palma de Mallorca in the Balearic Islands. Stop at the Gothic-style Bellver Castle, one of only a handful of circular castles in Europe, or board a vintage train through the orange and olive groves, almond and locust-bean trees, lush villages, and pine-covered mountains that create the island landscape. Your call in captivating Valencia offers the opportunity to view the city's architectural wonders, from the UNESCO World Heritage La Lonja de la Seda, a masterpiece of late Gothic architecture originally used for trading silk, to the

City of Arts and Sciences, a complex designed by native architect Santiago Calatrava. Your voyage will end in Barcelona, a city in perpetual movement, where you will fall under the spell of the famous architectural works of Antoni Gaudi, including the UNESCO World Heritage Basilica de la Sagrada Familia.



da Familia.

### ITINERARY

#### Day 1 LISBON

Portugal's capital city located on the banks of the Tagus, only a few kilometres from the Atlantic coast, is a city of exceptionally rich cultural diversity. At the mouth of the river harbour, impose two UNESCO World Heritage monuments,

Wild Earth Travel

*Small Ships, Big Adventures*

**0800 945 3327** (within New Zealand) | +64 (0) 3 365 1355 | **1800 107 715** (within Australia)

info@wildearth-travel.com | **wildearth-travel.com**



# Wild Earth Travel

*Small Ships, Big Adventures*

**wildearth-travel.com**

**info@wildearth-travel.com**

Jeronimos monastery and Belem tower. The Alfama hillside is also worth visiting: known for its fado bars and its Moorish streets, this district is the oldest one of the city and one of the most typical. Not far from there, Chiado's elegant streets are home to big fashion labels and are an invitation to a bit of luxury shopping.

## Day 2 AT SEA

During your day at sea, make the most of the many services and activities on board. Treat yourself to a moment of relaxation in the spa or stay in shape in the fitness centre. Depending on the season, let yourself be tempted by the swimming pool or a spot of sunbathing. This day without a port of call will also be an opportunity to enjoy the conferences or shows proposed on board, to do some shopping in the boutique or to meet the PONANT photographers in their dedicated space. As for lovers of the open sea, they will be able to visit the ship's upper deck to admire the spectacle of the waves and perhaps be lucky enough to observe marine species. A truly enchanted interlude, combining comfort, rest and entertainment.

## Day 3 CADIZ

Andalusia's Cadiz is located on the Costa de la Luz, in the south-west of Spain. From the beaches of Cortadura, to the flamenco bars of Santa Maria, through the colourful streets of la Viña, you will be amazed by this city, which is both steeped in history and extremely festive. In the medieval El Populo district, you will stroll along covered passages in the narrow gaps between houses. You will also be able to mosey around the lush Mina square. The star of the show is the magnificent cathedral and its dome crowned with yellow porcelain, presiding above the Ocean.

## Day 4 MÁLAGA

A historical and festive town, Malaga is located in Andalusia, on the Costa del Sol. Between the marina and the beaches, the seaside promenade of La Farola offers an ideal setting for strolling and relaxing. Set slightly further back, the Malagueta bullring is one of the emblematic sites of the city. From the hill overlooking the old town, one can see Gibralfaro castle and the Alcazaba, two fortified ensembles rising out from the cypresses and maritime pines. To visit Pablo Picasso's birthplace, you will go first to the courtly plaza de la Merced. A few streets back from here, you can explore the museum dedicated to the

artist, in the Buenavista palace.

## Day 5 AT SEA

During your day at sea, make the most of the many services and activities on board. Treat yourself to a moment of relaxation in the spa or stay in shape in the fitness centre. Depending on the season, let yourself be tempted by the swimming pool or a spot of sunbathing. This day without a port of call will also be an opportunity to enjoy the conferences or shows proposed on board, to do some shopping in the boutique or to meet the PONANT photographers in their dedicated space. As for lovers of the open sea, they will be able to visit the ship's upper deck to admire the spectacle of the waves and perhaps be lucky enough to observe marine species. A truly enchanted interlude, combining comfort, rest and entertainment.

## Day 6 PALMA DE MALLORCA, BALEARIC ISLANDS

Palma de Mallorca will reveal its many treasures: idyllic coves, majestic limestone cliffs that plunge into the clear sapphire- and turquoise-coloured waters of the Mediterranean, and vast plains planted with almond trees, olive trees and vineyards. When your ship calls at the capital of the Balearic Islands, take a walk to discover its emblematic monuments, such as its famous cathedral, and amble through its old streets. Here, like a painting, the island's historical heritage forms a backdrop to the lively and warm cosmopolitan atmosphere of the Mediterranean.

## Day 7 VALENCIA

Valencia - the city of Art and Sciences. Two hearts beat in this Spanish city: one is modern, avantgarde and almost futuristic; the other is more provincial, more traditional and nostalgic. Valencia has the temperament of a great Mediterranean city whose wide avenues form a border around the old town. The city has an abundance of architectural styles that coexist harmoniously, but above all it resolutely embraces the 21st Century with the futuristic structures of its Agora congress centre and City of Arts and Sciences, emerging from a crystal blue pool.

## Day 8 BARCELONA

Wild Earth Travel

*Small Ships, Big Adventures*

**0800 945 3327** (within New Zealand) | +64 (0) 3 365 1355 | **1800 107 715** (within Australia)

info@wildearth-travel.com | **wildearth-travel.com**





# Wild Earth Travel

*Small Ships, Big Adventures*

**wildearth-travel.com**

**info@wildearth-travel.com**

Located on the seashore between the mountains of Montjuic and Tibidabo, Barcelona offers its many visitors a perfect blend of tradition and modernism. Truly an open-air museum, the "prodigious town" reveals an astonishing range of artistic treasures and museums, combining Roman ruins, medieval districts and a number of avant-garde elements from the 20th Century. Over the years, it has been marked by some of the greatest artists, such as Picasso, Miro or Gaudi, most of whose work has been listed as World Heritage Sites by UNESCO. Take the time to stroll along the Ramblas and enjoy the gentle, typically Mediterranean lifestyle of the capital of Catalonia.

#### Please Note:

Itineraries are subject to change.

**Wild Earth Travel**

*Small Ships, Big Adventures*

**0800 945 3327** (within New Zealand) | +64 (0) 3 365 1355 | **1800 107 715** (within Australia)

info@wildearth-travel.com | **wildearth-travel.com**



# Wild Earth Travel

*Small Ships, Big Adventures*

**wildearth-travel.com**

**info@wildearth-travel.com**

## YOUR SHIP: LE BOREAL

<b>YOUR SHIP:</b>	<b>Le Boreal</b>
<b>VESSEL TYPE:</b>	<b>Luxury Expedition / Cruise Ship</b>
<b>LENGTH:</b>	<b>142 meters</b>
	<b>264 (in twin cabins, 200 in</b>
<b>PASSENGER CAPACITY:</b>	<b>Antarctica)</b>
<b>BUILT/REFURBISHED:</b>	<b>2011</b>

A superb mega-yacht with 132 cabins, she is the fruit of the expertise of the Italian Fincantieri shipyard and French sophistication, as interpreted by designer Jean-Philippe Nuel. Le Boreal remains faithful to our philosophy - to create a unique atmosphere, a subtle blend of luxury, intimacy and well-being. Superior materials, discreet elegance and a tasteful decor combined with exterior and interior lines to reflect a nautical mood, subtly revisited. On board, soothing neutral tones are enlivened by splashes of red, our signature theme linking tradition and innovation to create personal touches in the spirit of a "private yacht".

### Cuisine

Loyal to the great French tradition, the haute cuisine on board is worthy of the finest restaurants, where discreet, attentive service is the hallmark.

Our two restaurants welcome you for breakfasts, lunch and dinner. The Gastronomic Restaurant, with a capacity of 268 persons, is situated on Le Liberte Deck and serves you French and international cuisine accompagnied by fine wine. On the Grill Restaurant, you will have the opportunity to eat outside

and enjoy buffet lunch and themed dinner.

### Life On Board

Whether you want to join other guests in the theatre or games area (Wii™ consoles, etc), or relax on your own in a quiet corner of the library, Le Boreal has been designed to meet the needs of every guest.

Everything has been done to preserve the independence of each guest to suit their personal tastes: lounges for lectures and shows, a spa in partnership with Carita™, but also more intimate spaces such as the library and internet corner. Comfortable cabins, nearly all with private balcony, are available for families either as triples or as communicating cabins. There is also a games area with Wii™ consoles, children's menus, and a baby-sitting service. Just as if you were on a private yacht, your time is your own to do as you please.

Fitted with the latest equipment (Kinesis Wall, running machine) and in partnership with the famous Carita™ brand, the Beauty Centre on Le Boreal welcomes you for some unforgettable moments of relaxation and pampering (beauty treatments, hairdresser, hammam, balneotherapy).

Wild Earth Travel

*Small Ships, Big Adventures*

**0800 945 3327** (within New Zealand) | +64 (0) 3 365 1355 | **1800 107 715** (within Australia)

info@wildearth-travel.com | **wildearth-travel.com**





# Wild Earth Travel

*Small Ships, Big Adventures*

**wildearth-travel.com**

**info@wildearth-travel.com**



eotherapy).



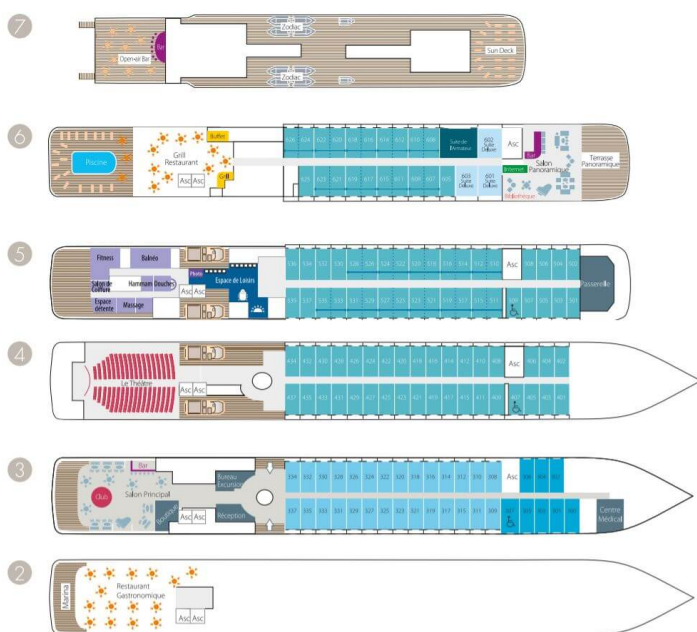
## Wild Earth Travel

*Small Ships, Big Adventures*

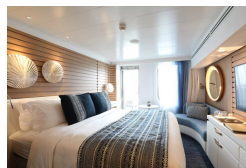
**0800 945 3327** (within New Zealand) | +64 (0) 3 365 1355 | **1800 107 715** (within Australia)

info@wildearth-travel.com | **wildearth-travel.com**

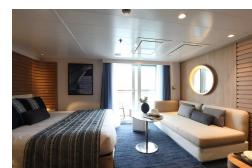
## INSIDE YOUR SHIP



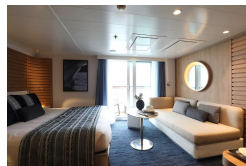
Deluxe Stateroom



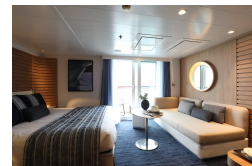
Deluxe Suite



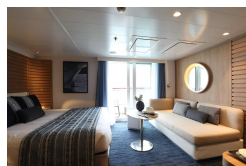
Deluxe Suite Deck 4



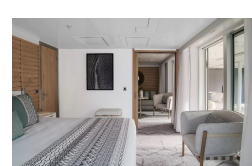
Deluxe Suite Deck 5



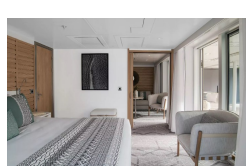
Deluxe Suite Deck 6



Grand Deluxe Suite



Grand Deluxe Suite Deck 6



Owner's Suite







# Wild Earth Travel

*Small Ships, Big Adventures*

**wildearth-travel.com**

**info@wildearth-travel.com**

## PRICING

### 16-Sep-2025 to 23-Sep-2025

Deluxe Stateroom	11940 AUD pp
Prestige Stateroom Deck 4	13230 AUD pp
Prestige Stateroom Deck 5	13870 AUD pp
Prestige Stateroom Deck 6	14640 AUD pp
Deluxe Suite Deck 5	20310 AUD pp
Deluxe Suite Deck 4	20310 AUD pp
Deluxe Suite	20310 AUD pp
Deluxe Suite Deck 6	20310 AUD pp
Prestige Suite Deck 5	27410 AUD pp
Prestige Suite Deck 6	28820 AUD pp
Privilege Suite	30230 AUD pp
Privilege Suite Deck 5	30230 AUD pp
Grand Deluxe Suite Deck 6	33200 AUD pp
Grand Deluxe Suite	33200 AUD pp
Owner's Suite	36660 AUD pp

### ADDITIONAL CHARGES:

**Port Taxes & Fees 520 AUD pp**

### 17-Oct-2026 to 24-Oct-2026

Superior Stateroom	7380 AUD pp
Deluxe Stateroom	7960 AUD pp
Prestige Deck 4	8800 AUD pp
Prestige Deck 5	9230 AUD pp
Prestige Deck 6	9730 AUD pp
Deluxe Suite	13430 AUD pp
Prestige Deck 5 Suite	18040 AUD pp
Prestige Deck 6 Suite	18960 AUD pp



Wild Earth Travel  
*Small Ships, Big Adventures*

**0800 945 3327** (within New Zealand) | +64 (0) 3 365 1355 | **1800 107 715** (within Australia)

info@wildearth-travel.com | **wildearth-travel.com**



# Wild Earth Travel

*Small Ships, Big Adventures*

**wildearth-travel.com**

**info@wildearth-travel.com**

## SPECIAL OFFERS

Online prices reflect the current brochure fare savings of up to 30%. Prices may change based on demand. Terms and conditions apply. This special offer is subject to availability. Please contact us for more details.

Wild Earth Travel

*Small Ships, Big Adventures*

**0800 945 3327** (within New Zealand) | +64 (0) 3 365 1355 | **1800 107 715** (within Australia)

info@wildearth-travel.com | **wildearth-travel.com**