



Wild Earth Travel

Small Ships, Big Adventures

wildearth-travel.com

info@wildearth-travel.com

CRUISING THE NORWEGIAN FJORDS — WITH SMITHSONIAN JOURNEYS

In alliance with Smithsonian Journeys.

This cruise is part of a collection of PONANT voyages that are specially-tailored for English-speaking travelers who want to engage with the world. In addition to the usual elements of the PONANT experience, the listed price for these voyages includes transfers to and from the ship, talks and discussions aboard ship by world class experts, and a shore excursion or activity in each port of call that encourages guests to embrace the sights, sounds, tastes, and smells of the local environment and culture.

Join PONANT aboard Le Bellot for an 8-day cruise on an exceptional itinerary to discover the beauty of the Norwegian fjords.

Begin your voyage in Oslo, the vibrant Norwegian capital.

Sail first towards the lively harbor town of Gothenburg, Sweden. As the home of Volvo, the city boasts the Volvo Museum, which contains every Volvo model produced since 1927. The stunning Museum of Fine Arts includes works by Carl Larsson, Edvard Munch, Anders Zorn, Van Gogh, Picasso, Chagall, and Monet.

From Arendal, visit the Naes Ironworks Museum, which chronicles how iron production changed between 1665 and 1959, and stop in Tvedestrand, a charming village of white wooden houses. Or visit Raet National Park, which was established in 2016 to protect the region's unique topography.

Le Bellot then sails to Stavanger. Here, the reconstructed Iron Age village in Ullandhaug introduces you to the life of Norway's earliest inhabitants. The region's pristine coastal wilderness also offers an opportunity to take an invigorating hike. This afternoon, sail the beautiful Lysefjorden.

Next stop in Alesund, famous for the art nouveau architectural style in which its downtown was rebuilt after a terrible fire in 1904. Here you will also find the Atlantic Ocean Park, a unique aquarium featuring marine life found along Norway's Atlantic coast.

Be sure to be on the outside decks as Le Bellot traverses the UNESCO World Heritage-listed Geirangerfjord. Explore the fjord region overland - including a stop at the Jostedal Glacier National Park Centre - from Hellesylt.

Your final call is in Olden. From this small and charming village, located a few miles from Jostedalsbreen National Park, home to one of the last ice caps in Europe, you are able to admire the magnificent Briksdal Glacier.

Your cruise ends in Bergen, famous for its Hanseatic wharf, Bryggen, a UNESCO World Heritage site which still carries traces of the rich historic past of the city founded by the Vikings.

Wild Earth Travel

Small Ships, Big Adventures

0800 945 3327 (within New Zealand) | +64 (0) 3 365 1355 | **1800 107 715** (within Australia)

info@wildearth-travel.com | **wildearth-travel.com**

Wild Earth Travel

Small Ships, Big Adventures

wildearth-travel.com

info@wildearth-travel.com



he Vikings.

ITINERARY

Day 1 BERGEN

Located at the end of Byfjord, Bergen was the capital of Norway in the 12th and 13th Centuries and has preserved some very beautiful monuments from the time when it was home to royalty. Wandering through Bergen's streets means going back in time, in search of the hidden treasures that have been listed as World Heritage Sites by UNESCO. A veritable openair museum, Bergen is home to a thriving artistic community of painters, potters, jewellers. The Bergen cable car offers you a splendid panorama over the port and the surrounding fjords. Do not miss the visit to the old quarter with its narrow streets, a testimony of the power of the hanseatic League that controlled trade in Northern Europe at the end of the Middle Ages.

Day 2 ALESUND

Surrounded by a multitude of islands, fjords and majestic mountains, the town of Ålesund surprises many visitors. In fact, it is internationally renowned for its Art nouveau architecture. After the terrible fire of 1904 which reduced a large part of the town to ashes, Norwegian architects inspired by the Art nouveau style contributed to its reconstruction, with a very picturesque result. Not far from Ålesund, you will also discover Giske, the native island of Rollon, the great Viking leader who commanded the Norse expeditions to Normandy, or the beautiful island of Godøy and the village of Alnes, which offers a grandiose panorama over the Atlantic Ocean and the surrounding islands.

Day 3 GEIRANGER & HELLESYLT

A must-see stopover in Norway, located halfway between Bergen and Trondheim, Geiranger offers the stunning beauty of a natural decor, listed as a UNESCO World Heritage site. The splendour of the sheer cliffs, dark rock and crystalline water are the stars of the show here. The sides of the fjord offer many possibilities for hiking: the Eagle's Road takes you up to a steep stretch offering a gorgeous panoramic view. A visit to Geiranger village will immerse you in the rhythm of life in the little local community. Hellesylt is a small village located 20 kilometres from the Geiranger site. Here, you'll get a taste of a traditional Norwegian village. Colourful houses, wooden walkways, rustic stalls where you can have a refreshment before heading off to discover more of the local colour. The surroundings are simply magnificent with cliffs, mountains and lakes with peaceful waters. The village is crossed by a river whose charming cascade tumbles into the fjord waters.

Day 4 OLDEN

With its two wooden churches, one red and the other white, plus its breathtaking view of the mouth of the river Oldeelva, Olden looks just like a picture post card. Located a few kilometres from the Jostedalsgreen park, home to one of the last glacier polar icecaps, this little village is a definite must for exploring the blue languages of the Briksdal or Kjennalen glaciers. Make sure you find some time to visit the Norwegian Glacier Museum. Absolutely amazing. Another gem is lake Lovatn and its turquoise waters inviting you to quiet contemplation.

Day 5 STAVANGER & SAILING IN LYSEFJORDEN

Wild Earth Travel

Small Ships, Big Adventures

0800 945 3327 (within New Zealand) | +64 (0) 3 365 1355 | **1800 107 715** (within Australia)

info@wildearth-travel.com | wildearth-travel.com

Wild Earth Travel

Small Ships, Big Adventures



wildearth-travel.com

info@wildearth-travel.com

At the far end of the country, stands the harbour town of Stavanger, with its warm, friendly atmosphere. A friendliness you'll notice in the little old town cobbled streets, which has some 170 old wooden houses, as well as in its modern city centre, always bustling. You will sail into the heart of one of Norway's most breathtaking fjords, its marvellous decor dominated by pristine nature, between vertiginous granite cliffs, crystal-clear waters and luxuriant vegetation. Very close to Stavanger, the quiet waters of Lysefjorden stretch out over around forty kilometres, beneath impressive rocks. Admire the world-famous site of Preikestolen (Pulpit Rock), a majestic cliff in the shape of a pulpit that rises to more than 600 metres above the waters. A bit further on, Flørli, from the top of its 4,444 steps, is the world's longest wooden stairway, whereas the Kjerag, with its mythical boulder wedged between two rock faces, provides an unusual and unforgettable spectacle.

Day 6 ARENDAL

This port town located on the south coast of Norway is considered to be the locality with the best climate in the entire country. Arendal was long reputed for its iron mines from which, in the 19th century, it was able to produce a particularly strong earthy iron ore.

Day 7 GÖTEBORG (GOTHENBURG)

A lively harbour town, Goteborg is located on the west coast of Sweden, at the crossing of the Gota alv river and the bay of Cattegat. In the old Haga district, you can peruse hippy-chic fashion boutiques and bohemian cafes in the ground floors of traditional wood houses. On the majestic Gustave-Adolphe square, you'll see elegant neoclassical buildings. Not far from here is the municipal museum dedicated to the town's history. In addition, you will be able to sail along Goteborg's numerous canals. As for eating, it's the fish and shellfish which make the gastronomic reputation of this beautiful stopover.

Day 8 OSLO

Capital of Norway, Oslo, is a green city. Its many parks and gardens make it the reputedly pleasant city it is. The 80 hectares of Vigeland sculpture parks and its 212 open air exhibitions, the Munch Museum dedicated to the life and works of the Norwegian artist Edvard Munch, plus the Akershus fortress which

symbolises Oslo's rich history, are both must-sees. For culture, the national gallery shelters the largest Norwegian collection of paintings, drawings and sculptures open to the public. And, for sports enthusiasts, the Holmenkollen district with its Ski museum and famous ski jump offer the most stunning, all-encompassing view of the city.

Please Note:

Itineraries are subject to change.

Wild Earth Travel

Small Ships, Big Adventures

0800 945 3327 (within New Zealand) | +64 (0) 3 365 1355 | **1800 107 715** (within Australia)

info@wildearth-travel.com | **wildearth-travel.com**

Wild Earth Travel

Small Ships, Big Adventures



wildearth-travel.com

info@wildearth-travel.com

YOUR SHIP: LE LAPEROUSE

YOUR SHIP:	Le Laperouse
VESSEL TYPE:	Luxury
LENGTH:	127 metres
PASSENGER CAPACITY:	92 cabins
BUILT/REFURBISHED:	2017/2018

Featuring innovative and environmentally-friendly equipment, elegantly designed cabins, spacious suites with large windows, and lounge areas that open onto the outside, this new limited-capacity yacht boasting just 92 cabins and suites will offer you a truly unique cruising experience.

Aboard this ship that flies the French flag, you will experience the incomparable pleasure of an intimate cruise, with the possibility of exploring an ever-increasing range of destinations in an ethnic-chic ambiance with luxury service.

Experience a luxurious setting where the accent is on authenticity and passion for travel.

RESTAURANTS

As it is an essential part of French culture, gastronomy will naturally have pride of place aboard this new ship. Through its two restaurants, Le Laperouse will invite you on a journey to elegance and epicureanism.

In a relaxed atmosphere, a first dining area located on Deck 3 and able to seat 70 will serve grilled meats daily, along with a variety of salads and desserts.

To the back of Deck 4, you will find a 260 m² panoramic restaurant which can accommodate all of our passengers in a

single sitting. Designed differently to that on our other ships, this dining area, which opens onto the outside, will have a buffet of salads, desserts and cheeses at your disposal. Our discreet and attentive crew will provide table service for hot meals.

PUBLIC AREAS

Like Le Boreal and its sisterships, Le Laperouse has many common areas that are designed and equipped to meet all of your needs while preserving the intimacy of each passenger.

A 140 m² reception area includes: A reception/concierge desk, An excursions desk, The ship's administrative services, The sales office, manned by our Guest Relations Officer, Our 50 m² boutique which sells clothing, jewellery, beauty products, postcards and various accessories, Toilets accessible to passengers with reduced mobility.

A new hydraulic platform with adjustable height provides: Easier boarding than on any other cruise ship, Easier Zodiac embarkation and disembarkation for expeditions, Easier access to the sea for swimming and practising various water sports such as kayaking or paddle-boarding.

A pool deck offering: A pool with a panoramic view, equipped with a counter-current swimming system, A pleasant solarium, An outdoor bar and lounge with armchairs and sofas.

A 200 m² main lounge which can accommodate all of our passengers to share convivial moments and to host activities organised during the day or evening.

Lastly, a theatre that seats 188, equipped with: The latest sound and lighting technology, A LED wall as the stage backdrop, for the projection of high-resolution images and videos.

Wild Earth Travel

Small Ships, Big Adventures

0800 945 3327 (within New Zealand) | +64 (0) 3 365 1355 | **1800 107 715** (within Australia)

info@wildearth-travel.com | **wildearth-travel.com**



Wild Earth Travel

Small Ships, Big Adventures



wildearth-travel.com

info@wildearth-travel.com



and videos.



Wild Earth Travel

Small Ships, Big Adventures

0800 945 3327 (within New Zealand) | +64 (0) 3 365 1355 | **1800 107 715** (within Australia)

info@wildearth-travel.com | **wildearth-travel.com**

Wild Earth Travel

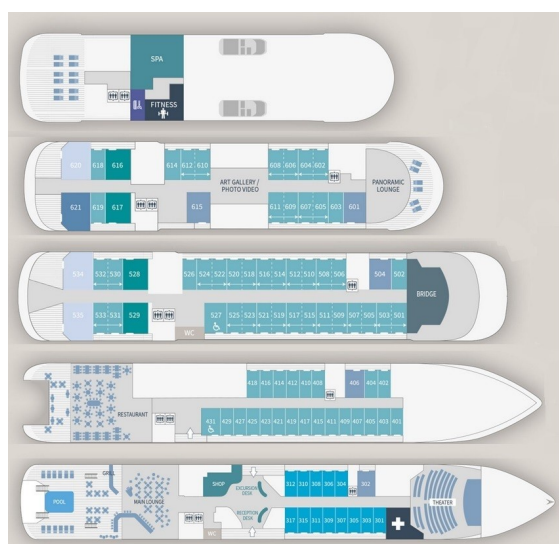
Small Ships, Big Adventures



wildearth-travel.com

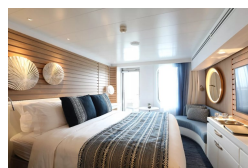
info@wildearth-travel.com

INSIDE YOUR SHIP

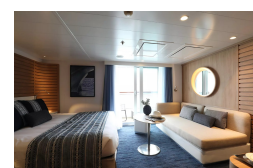


- Owner's Suite Deck 6
- Privilege Suites Deck 5-6
- Grand Deluxe Suites Deck 5-6
- Prestige Suites Deck 5-6
- Deluxe Suites Deck 5-6
- Prestige Cabins Deck 4-5-6
- Deluxe Cabins Deck 3

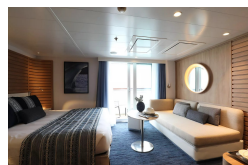
Deluxe Stateroom



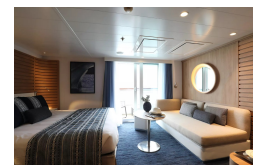
Deluxe Suite Deck 3



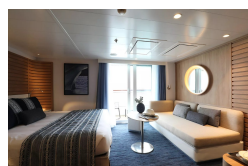
Deluxe Suite Deck 4



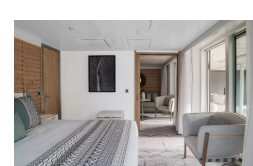
Deluxe Suite Deck 5



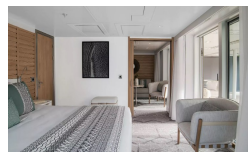
Deluxe Suite Deck 6



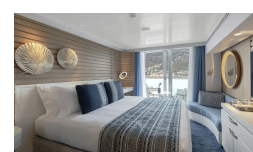
Grand Deluxe Suite Deck 5



Grand Deluxe Suite Deck 6



Prestige Deck 4



Wild Earth Travel
Small Ships, Big Adventures

0800 945 3327 (within New Zealand) | +64 (0) 3 365 1355 | 1800 107 715 (within Australia)

info@wildearth-travel.com | wildearth-travel.com

Wild Earth Travel

Small Ships, Big Adventures

wildearth-travel.com

info@wildearth-travel.com

PRICING

04-Jun-2026 to 11-Jun-2026

Deluxe Stateroom	13810 AUD pp
Prestige Deck 4	15260 AUD pp
Prestige Deck 5	15980 AUD pp
Prestige Deck 6	16860 AUD pp
Deluxe Suite Deck 6	23240 AUD pp
Deluxe Suite Deck 3	23240 AUD pp
Deluxe Suite Deck 4	23240 AUD pp
Deluxe Suite Deck 5	23240 AUD pp
Prestige Deck 5 Suite	31200 AUD pp
Prestige Deck 6 Suite	32800 AUD pp
Privilege Suite Deck 5	34400 AUD pp
Privilege Suite Deck 6	34400 AUD pp
Grand Deluxe Suite Deck 6	37720 AUD pp
Grand Deluxe Suite Deck 5	37720 AUD pp

31-May-2027 to 07-Jun-2027

Deluxe Stateroom	11550 AUD pp
Prestige Deck 4	12730 AUD pp
Prestige Deck 5	13330 AUD pp
Prestige Deck 6	14040 AUD pp
Deluxe Suite Deck 6	19250 AUD pp
Deluxe Suite Deck 3	19250 AUD pp
Deluxe Suite Deck 4	19250 AUD pp
Deluxe Suite Deck 5	19250 AUD pp
Prestige Deck 5 Suite	25760 AUD pp
Prestige Deck 6 Suite	27070 AUD pp
Privilege Suite Deck 5	28370 AUD pp
Privilege Suite Deck 6	28370 AUD pp
Grand Deluxe Suite Deck 6	31090 AUD pp
Grand Deluxe Suite Deck 5	31090 AUD pp

ADDITIONAL CHARGES:

Port Taxes & Fees 520 AUD pp

Wild Earth Travel

Small Ships, Big Adventures

0800 945 3327 (within New Zealand) | +64 (0) 3 365 1355 | **1800 107 715** (within Australia)

info@wildearth-travel.com | wildearth-travel.com



Wild Earth Travel

Small Ships, Big Adventures



wildearth-travel.com

info@wildearth-travel.com

SPECIAL OFFERS

Online prices reflect the current brochure fare savings of up to 30%. Prices may change based on demand. Terms and conditions apply. This special offer is subject to availability. Please contact us for more details.



Wild Earth Travel

Small Ships, Big Adventures

0800 945 3327 (within New Zealand) | +64 (0) 3 365 1355 | **1800 107 715** (within Australia)

info@wildearth-travel.com | **wildearth-travel.com**