

# Wild Earth Travel

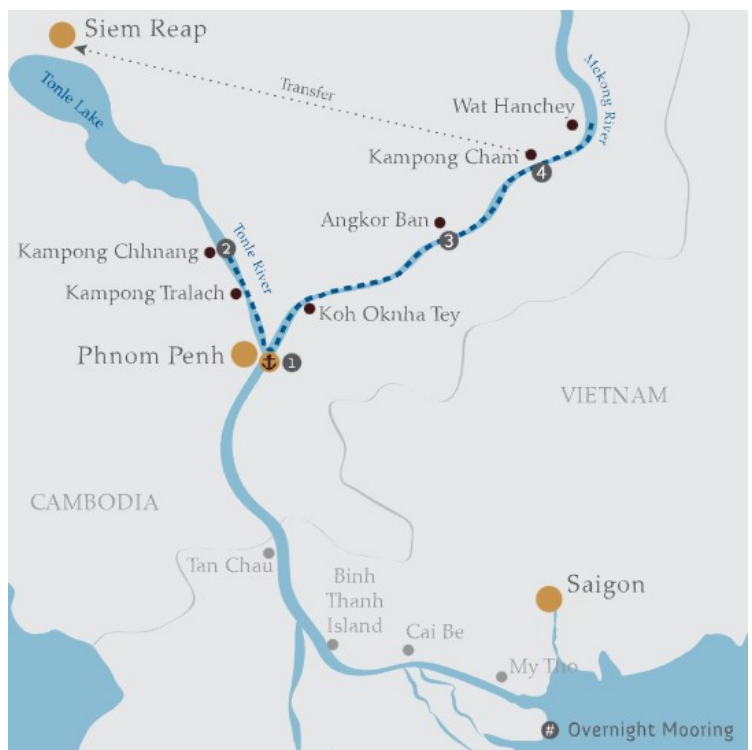
*Small Ships, Big Adventures*

**wildearth-travel.com**

**info@wildearth-travel.com**

## CRUISING THE LOWER MEKONG RIVER - 5 DAYS

The mighty Mekong - a mysterious body of water flowing through six countries in Asia. Giving love and life to millions, it received its fame by the legendary God King of ancient Cambodia, King Jayavarman VII, who linked hands with the waters of the Mekong to build the magnificent Angkor civilization. The best of rural Cambodia plus an in depth historical insight of Phnom Penh is offered with this 4-Night itinerary named "Serenity Cruise". See the unseen, discover ancient pre-Angkorian temples, relish the cordial smiles of the local people, be fascinated by the arts and crafts and immerse yourself in the astonishing Tonle's riverine landscapes and eco-system.



### ITINERARY

#### DAY 1 Phnom Penh

Our staff offers a friendly welcome aboard in the earlier morning hours as you check-in into your luxurious "home" for the next few days. Welcome to Phnom Penh - the city once named Paris of the East. Despite its rapid development, it has retained a lot of its rustic charm and elegance. It is an amazing town with centuries of incredible history and culture which can still be felt at many street corners. We start with a full sight-seeing tour right after breakfast. By bus, we visit the Killing Fields outside the city and afterwards the centrally located prison "S21". Both historic sites display the sad and cruel chapter of the

Wild Earth Travel

*Small Ships, Big Adventures*

**0800 945 3327** (within New Zealand) | +64 (0) 3 365 1355 | **1800 107 715** (within Australia)

info@wildearth-travel.com | **wildearth-travel.com**



# Wild Earth Travel

*Small Ships, Big Adventures*

**wildearth-travel.com**

**info@wildearth-travel.com**

country's history when the Khmer Rouge ruled Cambodia with terror and oppression. Those places have not changed much since this horrific time back in the early seventies and it can be quite heart-breaking. Alternatively, you may explore the city on your own in the morning before re-joining the group. We have a lunch at a well-renowned restaurant in town and experience the elegant air Phnom Penh's top addresses are known for. Our exploration of Phnom Penh continues with the cultural highlights of the city's heritage. The golden edifice of the Royal Palace with its Silver Pagoda and the exceptional Khmer crafts at the National Museum top the list of the city's must-sees. The day trip ends with a "cyclo" ride along the bustling streets of downtown Phnom Penh and back to the ship. In the early evening, the lounge is set up for an eye- and ear-catching lecture about modern Cambodian history, held by our friend and local expert, Mr Jean-Michel, professor from the Royal University of Phnom Penh. Receiving first-hand knowledge from our lecturer who has studied the subject extensively and in-person is a highlight of this cruise. Take some rest or join fellow passengers at the bar for refreshing drinks. Today's evening is a special one: let us invite you to a wonderful open air gala featuring a barbecue dinner feast. The dinner is accompanied by a classic Apsara dance performance along with other folklore dances. As the evening unwinds, enjoy your supper with a good glass of wine and marvel at the skyline of Phnom Penh and the calming flow of the Tonle River. Meals: Lunch, Barbecue Gala Dinner

## DAY 2 Phnom Penh – Kampong Tralach – Kampong Chhnang (Tonle)

Before the sun peaks over the horizon, the cruiser sets sail towards Kampong Tralach on the Tonle River. This part of the Tonle River is quite interesting to watch from the terrace as the river at certain points is very narrow. The boat glides through leafy swaths of this jungle-like landscape. We reach Kampong Tralach, where laughing children wave enthusiastically at our arrival and traditional ox carts are still a common means of transportation. Our ox-powered vehicle takes us on a journey along the riverside and through back roads lined with rice-paddy fields until we arrive at a tiny village. Beginning a few short years ago, local underprivileged children have had the opportunity to receive an education at the "Green School", a local project supported by Heritage Line. The students, who are dressed in green shirts, are always happy to meet us every week as the principal gives an introduction to the students and the school. While we sail upstream, lunch is served and afterwards our crew displays a variety of traditional Khmer fashion locals wear on special occasions. Conversely, the Cambodian scarf, the Krama, is a garment worn by people of all ages and walks of life not just around the neck, but also as a bandanna, facemask, belt, swimwear, and even as a hammock to carry

children. Later in the day, the ship cruises along the narrow Tonle River towards the most fascinating cruising spot in Cambodia, Kampong Chhnang's "water world", where everything is balanced on sticks in water-rich soil. We take a local boat to the shore and hop on a mini bus to reach a nearby, unique rural village to explore the village's specialties - Khmer style pottery and the process of making of palm sugar from the Cambodian "skor t'not" palm tree. We drive back to the shore and taking the local boat back to the ship. In this area along the Tonle River local communities used to live along the shores on floating houses. Their inhabitants were Vietnamese descents who were expelled by the Khmer Rouge and returned after the ruling party was overthrown in 1979. As they had no land to settle on, they have decided back then to live "on the water" until only recently in 2021 the government relocated them on land. Once we are back on board, relax until dinner is served and take in the beautiful countryside and its gentle evening sounds. Meals: Breakfast, Lunch, Dinner

## DAY 3 Tonle River - Koh Oknha Tey - Kampong Cham (Mekong)

In the early morning, we sail from the lower Tonle River towards the Mekong passing their confluence at Phnom Penh. We arrive at the island of Koh Oknha Tey, which lies in the middle of the Mekong and owes its fame to manufacturing high-class silk products. We go sightseeing along the island's roads a bit via tuk tuk before arriving at the village's workshops and witnessing the curious process of making silk, starting from a tiny silkworm larva to cocoon, then dyeing, spinning and weaving the fibres into high-quality Cambodian silk. Before lunch, our expert guide holds a presentation about the geography of the Mekong River and Tonle Lake along with the unique attributes of the area. Afterwards, a monks' blessing ceremony delivers spirits and wishes for health and prosperity for all. The ship sails towards the small Angkor Ban village up in the Mekong River. The village is famous for its unspoiled community and beautiful, traditional houses. It feels like being transported back a hundred years, into an era unaffected by modernity where villagers are characterized by their unbridled warmth. The sun sets and the light now bathes everything in a golden hue. The surrounding natural beauty is a perfect backdrop for a riverbank gathering with cocktails and dancing with the crew in this remote, secluded location. We continue cruising while dinner is served and the boat finds its overnight spot at the riverbank of Kampong Cham. Meals: Breakfast, Lunch, Dinner

## DAY 4 Kampong Cham (Mekong)

After a sumptuous breakfast, we leave the ship for enchanting pre-Angkorian

Wild Earth Travel

*Small Ships, Big Adventures*

**0800 945 3327** (within New Zealand) | +64 (0) 3 365 1355 | **1800 107 715** (within Australia)

info@wildearth-travel.com | **wildearth-travel.com**



# Wild Earth Travel

*Small Ships, Big Adventures*

**wildearth-travel.com**

**info@wildearth-travel.com**

temple of Wat Hanchey (7th century). Formerly built to honor the Hindu god, Hirahara, the complex is now a Buddhist temple, a testament to the country's past and present religious beliefs. This small complex sits on a hilltop with breath-taking views over the Mekong. Many young, novice monks live on the compound of Wat Hanchey, and we have the chance to observe a bit of their daily lives: eating simple meals, praying, studying, or hanging out and making conversation while in their saffron-coloured robes. After returning to the ship and partaking in lunch, we stop at the tranquil monastery of Wat Nokor. Although not massive in comparison to the vast complexes of Angkor Wat, Wat Nokor is the largest of its kind in Kampong Cham Province and is distinctive from other temples with its black sandstone walls. Here, we might have the chance to engage in light banter with some of the sociable monks living in the area. As it is low water season, we may be fortunate enough to visit a nearby spectacle only present during the Mekong's dry months (December to May). The Koh Paen Bamboo Bridge connects the mainland with Koh Paen Island and is re-built by the local community every November when water levels drop. We cruise further up the Mekong to visit a local school and learn more about the education of the young Cambodian generation. Children from the Organization for Basic Training (OBT) are provided a free, supplemental education in English, maths, and the arts, and they are always excited to show their skills in music and dance. Shower the young performers with applause and in return, you are bestowed upon with the most genuine and happy Cambodian smiles. Meals: Breakfast, Lunch, Dinner

Itineraries are subject to change.

## DAY 5 Kampong Cham (Mekong) - Siem Reap

Enjoy your last breakfast on board our floating sanctuary. We disembark the ship for a transfer by bus to the drop off point in Siem Reap. Kampong Cham is an important trade and transportation hub. The highway connecting the town and the capital of Phnom Penh is among the best maintained in Cambodia, and the country's first bridge across the Mekong (Kizuna Bridge) was built here in 2001. The transfer takes approximately 4.5 hours including rest stop. To keep you entertained during the ride, our expert guides share interesting insights about Cambodia and the region we journey through. Snacks are provided during the trip. You will arrive in Siem Reap in the early afternoon. We hope you enjoyed this fascinating river cruise, just as our crew does every single time. Moreover, take the enchanting memories and friendships along with you and share the stories of this amazing river - the Mighty Mekong. Meals: Breakfast

Please Note:

**Wild Earth Travel**

*Small Ships, Big Adventures*

**0800 945 3327** (within New Zealand) | +64 (0) 3 365 1355 | **1800 107 715** (within Australia)

info@wildearth-travel.com | **wildearth-travel.com**



# Wild Earth Travel

*Small Ships, Big Adventures*

**wildearth-travel.com**

**info@wildearth-travel.com**

## YOUR SHIP: JAYAVARMAN

<b>YOUR SHIP:</b>	<b>Jayavarman</b>
<b>VESSEL TYPE:</b>	<b>River Boat</b>
<b>LENGTH:</b>	<b>60 metres</b>
<b>PASSENGER CAPACITY:</b>	<b>54 (in 27 cabins)</b>
<b>BUILT/REFURBISHED:</b>	<b>2009</b>

The majestic Jayavarman is considered the father in Heritage Line's "family" of cruise ships. This vessel was named after Angkor's most venerated king, a devout Buddhist who ruled from 1181 to 1218. King Jayavarman oversaw the construction of some of the most famous temples in Angkor, including Ta Prohm, Preah Khan and the unforgettable Bayon. Inspired by the serenity and artistry associated with this great Khmer monarch, Jayavarman's design was also influenced by the French cruise liner Normandie, which launched in 1935. Travelling the Mekong between My Tho, the entry gate to the Mekong Delta, and Siem Reap, Cambodia, Jayavarman marries the art deco charm of 1930's France with the romance of Indochina. Measuring 57.8 meters/190 feet from bow to stern, Jayavarman holds 27 elegantly decorated cabins. Thanks to its intricate woodcarvings, Khmer bas-reliefs and Vietnamese lacquer paintings, this impressive cruise ship resembles a floating art gallery. Wherever they look, guests are reminded of the local arts and culture.

With three-and-a-half decks, Jayavarman is as spacious as it is beautiful. Guests can admire Khmer artifacts in the Henry Mouhot Lounge, mingle in the Club 1930 Bar, dine in the

elegant Indochine Dining Hall, and recharge with spa treatments in the Apsara Spa. A Jacuzzi pool is located on the top sun deck, which offers spectacular views of the passing delta. Along with its peaceful beauty, the Mekong Delta is known for its friendly locals. The crew members of Jayavarman are no exception. From the moment they board, guests are made to feel at home. Offering exceptional service, comfort and style, Jayavarman is a name to remember. This beautiful vessel is an unforgettable means of exploring some of the finest scenery in Asia.

### "HENRY MOUHOT" LOBBY LOUNGE

Named after the French archeologist who discovered the Angkor temple complex, the Henry Mouhot Lounge is the perfect place to curl up with a book or an e-book as. It is wifi connected. The lounge also hosts the boutique shop and the reception. The Lounge has a decidedly scholarly air about it - dark furniture with harmonious Asian fabrics, a fine smell of teak wood; white ceiling and rose-painted walls together with a bunch of stunning Khmer artifacts bring back memories of the past French Colonial era.

### "CLUB 1930" FUNNEL BAR & LOUNGE

Be transported back to 30s and 40s in our Club 1930 Bar and Funnel Lounge. The bar has a warm classical feel and the lounge is spacious and airy. Observe the passing landscape from your dark-wood colonial styled and cushion filled chaise longue or sink in your comfy cane chair for a quick snooze.

### INDOCHINE DINING HALL

It is difficult not to be wowed by the Indochine Dining Hall. Your breakfast spread - gargantuan and delectable - is lit by the early

Wild Earth Travel

*Small Ships, Big Adventures*

**0800 945 3327** (within New Zealand) | +64 (0) 3 365 1355 | **1800 107 715** (within Australia)

info@wildearth-travel.com | **wildearth-travel.com**



morning rays of the sun. The hall is natural lighting during day and romantic with its antique ceiling lights in the evening. It offers free style seating and food is served via buffet or set menu

#### THE APSARA BEAUTY AND WELLNESS SPA

The spa is tucked away in a quiet area at the front of the ship on the main deck. The room is designed to accommodate two guests at the same time. Selected Asian spa treatments are available ranging from relaxing foot massage up to East Western fusions.



rn fusions.

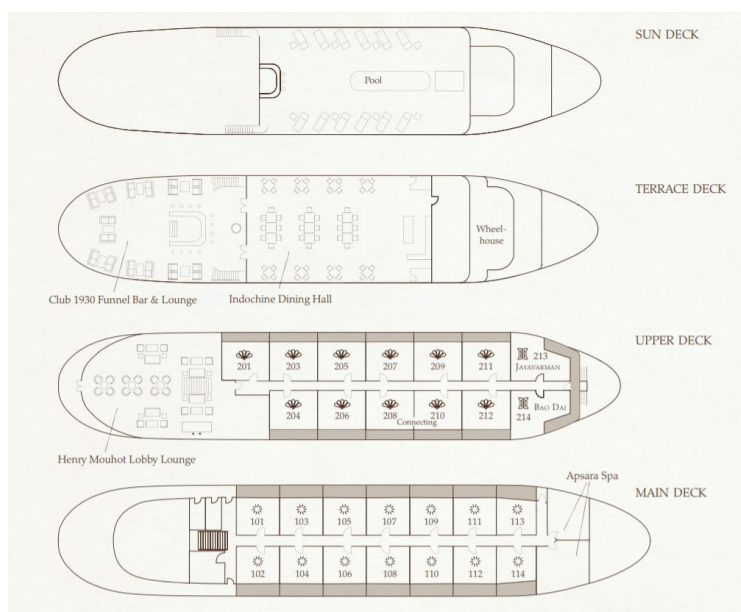
# Wild Earth Travel

*Small Ships, Big Adventures*

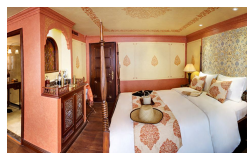
[wildearth-travel.com](http://wildearth-travel.com)

[info@wildearth-travel.com](mailto:info@wildearth-travel.com)

## INSIDE YOUR SHIP



DELUXE STATEROOM



SIGNATURE SUITE



NOBLE SUITE



SUPERIOR STATEROOM



Wild Earth Travel

*Small Ships, Big Adventures*

0800 945 3327 (within New Zealand) | +64 (0) 3 365 1355 | 1800 107 715 (within Australia)

[info@wildearth-travel.com](mailto:info@wildearth-travel.com) | [wildearth-travel.com](http://wildearth-travel.com)

# Wild Earth Travel

*Small Ships, Big Adventures*

**wildearth-travel.com**

**info@wildearth-travel.com**

## PRICING

### 12-Aug-2025 to 16-Aug-2025

SUPERIOR STATEROOM	1505 USD pp
DELUXE STATEROOM	1807 USD pp
SIGNATURE SUITE	2183 USD pp
NOBLE SUITE	2439 USD pp

### 16-Aug-2025 to 20-Aug-2025

SUPERIOR STATEROOM	1505 USD pp
DELUXE STATEROOM	1807 USD pp
SIGNATURE SUITE	2183 USD pp
NOBLE SUITE	2439 USD pp

### 26-Aug-2025 to 30-Aug-2025

SUPERIOR STATEROOM	1505 USD pp
DELUXE STATEROOM	1807 USD pp
SIGNATURE SUITE	2183 USD pp
NOBLE SUITE	2439 USD pp

### 30-Aug-2025 to 03-Sep-2025

SUPERIOR STATEROOM	1505 USD pp
DELUXE STATEROOM	1807 USD pp
SIGNATURE SUITE	2183 USD pp
NOBLE SUITE	2439 USD pp

### 02-Sep-2025 to 06-Sep-2025

SUPERIOR STATEROOM	1532 USD pp
DELUXE STATEROOM	1838 USD pp
SIGNATURE SUITE	2175 USD pp

### 06-Sep-2025 to 10-Sep-2025

SUPERIOR STATEROOM	1532 USD pp
DELUXE STATEROOM	1838 USD pp
SIGNATURE SUITE	2175 USD pp

### 09-Sep-2025 to 13-Sep-2025

SUPERIOR STATEROOM	1505 USD pp
DELUXE STATEROOM	1807 USD pp
SIGNATURE SUITE	2183 USD pp
NOBLE SUITE	2439 USD pp

### 13-Sep-2025 to 17-Sep-2025

SUPERIOR STATEROOM	1505 USD pp
DELUXE STATEROOM	1807 USD pp
SIGNATURE SUITE	2183 USD pp
NOBLE SUITE	2439 USD pp

### 16-Sep-2025 to 20-Sep-2025

SUPERIOR STATEROOM	1532 USD pp
DELUXE STATEROOM	1838 USD pp
SIGNATURE SUITE	2175 USD pp

### 20-Sep-2025 to 24-Sep-2025

SUPERIOR STATEROOM	1532 USD pp
DELUXE STATEROOM	1838 USD pp
SIGNATURE SUITE	2175 USD pp

# Wild Earth Travel

*Small Ships, Big Adventures*

**wildearth-travel.com**

**info@wildearth-travel.com**

## PRICING

### 23-Sep-2025 to 27-Sep-2025

SUPERIOR STATEROOM	1505 USD pp
DELUXE STATEROOM	1807 USD pp
SIGNATURE SUITE	2183 USD pp
NOBLE SUITE	2439 USD pp

### 27-Sep-2025 to 01-Oct-2025

SUPERIOR STATEROOM	1505 USD pp
DELUXE STATEROOM	1807 USD pp
SIGNATURE SUITE	2183 USD pp
NOBLE SUITE	2439 USD pp

### 30-Sep-2025 to 04-Oct-2025

SUPERIOR STATEROOM	1532 USD pp
DELUXE STATEROOM	1838 USD pp
SIGNATURE SUITE	2175 USD pp

### 04-Oct-2025 to 08-Oct-2025

SUPERIOR STATEROOM	2292 USD pp
DELUXE STATEROOM	2750 USD pp
SIGNATURE SUITE	3254 USD pp

### 07-Oct-2025 to 11-Oct-2025

SUPERIOR STATEROOM	2502 USD pp
DELUXE STATEROOM	3002 USD pp
SIGNATURE SUITE	3628 USD pp
NOBLE SUITE	4053 USD pp

### 11-Oct-2025 to 15-Oct-2025

SUPERIOR STATEROOM	2502 USD pp
DELUXE STATEROOM	3002 USD pp
SIGNATURE SUITE	3628 USD pp
NOBLE SUITE	4053 USD pp

### 14-Oct-2025 to 18-Oct-2025

SUPERIOR STATEROOM	2292 USD pp
DELUXE STATEROOM	2750 USD pp
SIGNATURE SUITE	3254 USD pp

### 18-Oct-2025 to 22-Oct-2025

SUPERIOR STATEROOM	2292 USD pp
DELUXE STATEROOM	2750 USD pp
SIGNATURE SUITE	3254 USD pp

### 21-Oct-2025 to 25-Oct-2025

SUPERIOR STATEROOM	2502 USD pp
DELUXE STATEROOM	3002 USD pp
SIGNATURE SUITE	3628 USD pp
NOBLE SUITE	4053 USD pp

### 25-Oct-2025 to 29-Oct-2025

SUPERIOR STATEROOM	2502 USD pp
DELUXE STATEROOM	3002 USD pp
SIGNATURE SUITE	3628 USD pp
NOBLE SUITE	4053 USD pp

Wild Earth Travel

*Small Ships, Big Adventures*

**0800 945 3327** (within New Zealand) | +64 (0) 3 365 1355 | **1800 107 715** (within Australia)

info@wildearth-travel.com | wildearth-travel.com

# Wild Earth Travel

*Small Ships, Big Adventures*

**wildearth-travel.com**

**info@wildearth-travel.com**

## PRICING

### 28-Oct-2025 to 01-Nov-2025

SUPERIOR STATEROOM	2292 USD pp
DELUXE STATEROOM	2750 USD pp
SIGNATURE SUITE	3254 USD pp

### 01-Nov-2025 to 05-Nov-2025

SUPERIOR STATEROOM	2292 USD pp
DELUXE STATEROOM	2750 USD pp
SIGNATURE SUITE	3254 USD pp

### 04-Nov-2025 to 08-Nov-2025

SUPERIOR STATEROOM	2502 USD pp
DELUXE STATEROOM	3002 USD pp
SIGNATURE SUITE	3628 USD pp
NOBLE SUITE	4053 USD pp

### 08-Nov-2025 to 12-Nov-2025

SUPERIOR STATEROOM	2502 USD pp
DELUXE STATEROOM	3002 USD pp
SIGNATURE SUITE	3628 USD pp
NOBLE SUITE	4053 USD pp

### 11-Nov-2025 to 15-Nov-2025

SUPERIOR STATEROOM	2292 USD pp
DELUXE STATEROOM	2750 USD pp
SIGNATURE SUITE	3254 USD pp

### 15-Nov-2025 to 19-Nov-2025

SUPERIOR STATEROOM	2292 USD pp
DELUXE STATEROOM	2750 USD pp
SIGNATURE SUITE	3254 USD pp

### 18-Nov-2025 to 22-Nov-2025

SUPERIOR STATEROOM	2502 USD pp
DELUXE STATEROOM	3002 USD pp
SIGNATURE SUITE	3628 USD pp
NOBLE SUITE	4053 USD pp

### 22-Nov-2025 to 26-Nov-2025

SUPERIOR STATEROOM	2502 USD pp
DELUXE STATEROOM	3002 USD pp
SIGNATURE SUITE	3628 USD pp
NOBLE SUITE	4053 USD pp

### 25-Nov-2025 to 29-Nov-2025

SUPERIOR STATEROOM	2292 USD pp
DELUXE STATEROOM	2750 USD pp
SIGNATURE SUITE	3254 USD pp

### 29-Nov-2025 to 03-Dec-2025

SUPERIOR STATEROOM	2292 USD pp
DELUXE STATEROOM	2750 USD pp
SIGNATURE SUITE	3254 USD pp

Wild Earth Travel

*Small Ships, Big Adventures*

**0800 945 3327** (within New Zealand) | +64 (0) 3 365 1355 | **1800 107 715** (within Australia)

info@wildearth-travel.com | wildearth-travel.com

# Wild Earth Travel

*Small Ships, Big Adventures*

**wildearth-travel.com**

**info@wildearth-travel.com**

## PRICING

### 02-Dec-2025 to 06-Dec-2025

SUPERIOR STATEROOM	2502 USD pp
DELUXE STATEROOM	3002 USD pp
SIGNATURE SUITE	3628 USD pp
NOBLE SUITE	4053 USD pp

### 06-Dec-2025 to 10-Dec-2025

SUPERIOR STATEROOM	2502 USD pp
DELUXE STATEROOM	3002 USD pp
SIGNATURE SUITE	3628 USD pp
NOBLE SUITE	4053 USD pp

### 09-Dec-2025 to 13-Dec-2025

SUPERIOR STATEROOM	2292 USD pp
DELUXE STATEROOM	2750 USD pp
SIGNATURE SUITE	3254 USD pp

### 13-Dec-2025 to 17-Dec-2025

SUPERIOR STATEROOM	2292 USD pp
DELUXE STATEROOM	2750 USD pp
SIGNATURE SUITE	3254 USD pp

### 16-Dec-2025 to 20-Dec-2025

SUPERIOR STATEROOM	2502 USD pp
DELUXE STATEROOM	3002 USD pp
SIGNATURE SUITE	3628 USD pp
NOBLE SUITE	4053 USD pp

### 20-Dec-2025 to 24-Dec-2025

SUPERIOR STATEROOM	2502 USD pp
DELUXE STATEROOM	3002 USD pp
SIGNATURE SUITE	3628 USD pp
NOBLE SUITE	4053 USD pp

### 23-Dec-2025 to 27-Dec-2025

SUPERIOR STATEROOM	2292 USD pp
DELUXE STATEROOM	2750 USD pp
SIGNATURE SUITE	3254 USD pp

### 27-Dec-2025 to 31-Dec-2025

SUPERIOR STATEROOM	2292 USD pp
DELUXE STATEROOM	2750 USD pp
SIGNATURE SUITE	3254 USD pp

### 30-Dec-2025 to 03-Jan-2026

SUPERIOR STATEROOM	2502 USD pp
DELUXE STATEROOM	3002 USD pp
SIGNATURE SUITE	3628 USD pp
NOBLE SUITE	4053 USD pp

### 03-Jan-2026 to 07-Jan-2026

SUPERIOR STATEROOM	2677 USD pp
DELUXE STATEROOM	3213 USD pp
SIGNATURE SUITE	3882 USD pp
NOBLE SUITE	4417 USD pp

Wild Earth Travel

*Small Ships, Big Adventures*

**0800 945 3327** (within New Zealand) | +64 (0) 3 365 1355 | **1800 107 715** (within Australia)

info@wildearth-travel.com | wildearth-travel.com

# Wild Earth Travel

*Small Ships, Big Adventures*

**wildearth-travel.com**

**info@wildearth-travel.com**

## PRICING

### 06-Jan-2026 to 10-Jan-2026

SUPERIOR STATEROOM	2452 USD pp
DELUXE STATEROOM	2943 USD pp
SIGNATURE SUITE	3482 USD pp

### 10-Jan-2026 to 14-Jan-2026

SUPERIOR STATEROOM	2452 USD pp
DELUXE STATEROOM	2943 USD pp
SIGNATURE SUITE	3482 USD pp

### 13-Jan-2026 to 17-Jan-2026

SUPERIOR STATEROOM	2677 USD pp
DELUXE STATEROOM	3213 USD pp
SIGNATURE SUITE	3882 USD pp
NOBLE SUITE	4417 USD pp

### 17-Jan-2026 to 21-Jan-2026

SUPERIOR STATEROOM	2677 USD pp
DELUXE STATEROOM	3213 USD pp
SIGNATURE SUITE	3882 USD pp
NOBLE SUITE	4417 USD pp

### 20-Jan-2026 to 24-Jan-2026

SUPERIOR STATEROOM	2452 USD pp
DELUXE STATEROOM	2943 USD pp
SIGNATURE SUITE	3482 USD pp

### 24-Jan-2026 to 28-Jan-2026

SUPERIOR STATEROOM	2452 USD pp
DELUXE STATEROOM	2943 USD pp
SIGNATURE SUITE	3482 USD pp

### 27-Jan-2026 to 31-Jan-2026

SUPERIOR STATEROOM	2677 USD pp
DELUXE STATEROOM	3213 USD pp
SIGNATURE SUITE	3882 USD pp
NOBLE SUITE	4417 USD pp

### 31-Jan-2026 to 04-Feb-2026

SUPERIOR STATEROOM	2677 USD pp
DELUXE STATEROOM	3213 USD pp
SIGNATURE SUITE	3882 USD pp
NOBLE SUITE	4417 USD pp

### 03-Feb-2026 to 07-Feb-2026

SUPERIOR STATEROOM	2452 USD pp
DELUXE STATEROOM	2943 USD pp
SIGNATURE SUITE	3482 USD pp

### 07-Feb-2026 to 11-Feb-2026

SUPERIOR STATEROOM	2452 USD pp
DELUXE STATEROOM	2943 USD pp
SIGNATURE SUITE	3482 USD pp

# Wild Earth Travel

*Small Ships, Big Adventures*

**wildearth-travel.com**

**info@wildearth-travel.com**

## PRICING

### 10-Feb-2026 to 14-Feb-2026

SUPERIOR STATEROOM	2677 USD pp
DELUXE STATEROOM	3213 USD pp
SIGNATURE SUITE	3882 USD pp
NOBLE SUITE	4417 USD pp

### 14-Feb-2026 to 18-Feb-2026

SUPERIOR STATEROOM	2677 USD pp
DELUXE STATEROOM	3213 USD pp
SIGNATURE SUITE	3882 USD pp
NOBLE SUITE	4417 USD pp

### 17-Feb-2026 to 21-Feb-2026

SUPERIOR STATEROOM	2452 USD pp
DELUXE STATEROOM	2943 USD pp
SIGNATURE SUITE	3482 USD pp

### 21-Feb-2026 to 25-Feb-2026

SUPERIOR STATEROOM	2452 USD pp
DELUXE STATEROOM	2943 USD pp
SIGNATURE SUITE	3482 USD pp

### 24-Feb-2026 to 28-Feb-2026

SUPERIOR STATEROOM	2677 USD pp
DELUXE STATEROOM	3213 USD pp
SIGNATURE SUITE	3882 USD pp
NOBLE SUITE	4417 USD pp

### 28-Feb-2026 to 04-Mar-2026

SUPERIOR STATEROOM	2677 USD pp
DELUXE STATEROOM	3213 USD pp
SIGNATURE SUITE	3882 USD pp
NOBLE SUITE	4417 USD pp

### 03-Mar-2026 to 07-Mar-2026

SUPERIOR STATEROOM	2452 USD pp
DELUXE STATEROOM	2943 USD pp
SIGNATURE SUITE	3482 USD pp

### 07-Mar-2026 to 11-Mar-2026

SUPERIOR STATEROOM	2452 USD pp
DELUXE STATEROOM	2943 USD pp
SIGNATURE SUITE	3482 USD pp

### 10-Mar-2026 to 14-Mar-2026

SUPERIOR STATEROOM	2677 USD pp
DELUXE STATEROOM	3213 USD pp
SIGNATURE SUITE	3882 USD pp
NOBLE SUITE	4417 USD pp

### 14-Mar-2026 to 18-Mar-2026

SUPERIOR STATEROOM	2677 USD pp
DELUXE STATEROOM	3213 USD pp
SIGNATURE SUITE	3882 USD pp
NOBLE SUITE	4417 USD pp

# Wild Earth Travel

*Small Ships, Big Adventures*

**wildearth-travel.com**

**info@wildearth-travel.com**

## PRICING

### 17-Mar-2026 to 21-Mar-2026

SUPERIOR STATEROOM	2452 USD pp
DELUXE STATEROOM	2943 USD pp
SIGNATURE SUITE	3482 USD pp

### 21-Mar-2026 to 25-Mar-2026

SUPERIOR STATEROOM	2452 USD pp
DELUXE STATEROOM	2943 USD pp
SIGNATURE SUITE	3482 USD pp

### 24-Mar-2026 to 28-Mar-2026

SUPERIOR STATEROOM	2677 USD pp
DELUXE STATEROOM	3213 USD pp
SIGNATURE SUITE	3882 USD pp
NOBLE SUITE	4417 USD pp

### 28-Mar-2026 to 01-Apr-2026

SUPERIOR STATEROOM	2677 USD pp
DELUXE STATEROOM	3213 USD pp
SIGNATURE SUITE	3882 USD pp
NOBLE SUITE	4417 USD pp

### 31-Mar-2026 to 04-Apr-2026

SUPERIOR STATEROOM	2452 USD pp
DELUXE STATEROOM	2943 USD pp
SIGNATURE SUITE	3482 USD pp

### 04-Apr-2026 to 08-Apr-2026

SUPERIOR STATEROOM	1951 USD pp
DELUXE STATEROOM	2341 USD pp
SIGNATURE SUITE	2770 USD pp

### 07-Apr-2026 to 11-Apr-2026

SUPERIOR STATEROOM	2071 USD pp
DELUXE STATEROOM	2486 USD pp
SIGNATURE SUITE	3003 USD pp
NOBLE SUITE	3418 USD pp

### 11-Apr-2026 to 15-Apr-2026

SUPERIOR STATEROOM	2071 USD pp
DELUXE STATEROOM	2486 USD pp
SIGNATURE SUITE	3003 USD pp
NOBLE SUITE	3418 USD pp

### 14-Apr-2026 to 18-Apr-2026

SUPERIOR STATEROOM	1951 USD pp
DELUXE STATEROOM	2341 USD pp
SIGNATURE SUITE	2770 USD pp

### 18-Apr-2026 to 22-Apr-2026

SUPERIOR STATEROOM	1951 USD pp
DELUXE STATEROOM	2341 USD pp
SIGNATURE SUITE	2770 USD pp

# Wild Earth Travel

*Small Ships, Big Adventures*

**wildearth-travel.com**

**info@wildearth-travel.com**

## PRICING

### 16-Jun-2026 to 20-Jun-2026

SUPERIOR STATEROOM	1656 USD pp
DELUXE STATEROOM	1987 USD pp
SIGNATURE SUITE	2401 USD pp
NOBLE SUITE	2732 USD pp

### 20-Jun-2026 to 24-Jun-2026

SUPERIOR STATEROOM	1656 USD pp
DELUXE STATEROOM	1987 USD pp
SIGNATURE SUITE	2401 USD pp
NOBLE SUITE	2732 USD pp

### 30-Jun-2026 to 04-Jul-2026

SUPERIOR STATEROOM	1656 USD pp
DELUXE STATEROOM	1987 USD pp
SIGNATURE SUITE	2401 USD pp
NOBLE SUITE	2732 USD pp

### 04-Jul-2026 to 08-Jul-2026

SUPERIOR STATEROOM	1656 USD pp
DELUXE STATEROOM	1987 USD pp
SIGNATURE SUITE	2401 USD pp
NOBLE SUITE	2732 USD pp

### 07-Jul-2026 to 11-Jul-2026

SUPERIOR STATEROOM	1685 USD pp
DELUXE STATEROOM	2022 USD pp
SIGNATURE SUITE	2392 USD pp

### 11-Jul-2026 to 15-Jul-2026

SUPERIOR STATEROOM	1685 USD pp
DELUXE STATEROOM	2022 USD pp
SIGNATURE SUITE	2392 USD pp

### 14-Jul-2026 to 18-Jul-2026

SUPERIOR STATEROOM	1656 USD pp
DELUXE STATEROOM	1987 USD pp
SIGNATURE SUITE	2401 USD pp
NOBLE SUITE	2732 USD pp

### 18-Jul-2026 to 22-Jul-2026

SUPERIOR STATEROOM	1656 USD pp
DELUXE STATEROOM	1987 USD pp
SIGNATURE SUITE	2401 USD pp
NOBLE SUITE	2732 USD pp

### 21-Jul-2026 to 25-Jul-2026

SUPERIOR STATEROOM	1685 USD pp
DELUXE STATEROOM	2022 USD pp
SIGNATURE SUITE	2392 USD pp

### 25-Jul-2026 to 29-Jul-2026

SUPERIOR STATEROOM	1685 USD pp
DELUXE STATEROOM	2022 USD pp
SIGNATURE SUITE	2392 USD pp

# Wild Earth Travel

*Small Ships, Big Adventures*

**wildearth-travel.com**

**info@wildearth-travel.com**

## PRICING

### 28-Jul-2026 to 01-Aug-2026

SUPERIOR STATEROOM	1656 USD pp
DELUXE STATEROOM	1987 USD pp
SIGNATURE SUITE	2401 USD pp
NOBLE SUITE	2732 USD pp

### 01-Aug-2026 to 05-Aug-2026

SUPERIOR STATEROOM	1656 USD pp
DELUXE STATEROOM	1987 USD pp
SIGNATURE SUITE	2401 USD pp
NOBLE SUITE	2732 USD pp

### 04-Aug-2026 to 08-Aug-2026

SUPERIOR STATEROOM	1685 USD pp
DELUXE STATEROOM	2022 USD pp
SIGNATURE SUITE	2392 USD pp

### 08-Aug-2026 to 12-Aug-2026

SUPERIOR STATEROOM	1685 USD pp
DELUXE STATEROOM	2022 USD pp
SIGNATURE SUITE	2392 USD pp

### 11-Aug-2026 to 15-Aug-2026

SUPERIOR STATEROOM	1656 USD pp
DELUXE STATEROOM	1987 USD pp
SIGNATURE SUITE	2401 USD pp
NOBLE SUITE	2732 USD pp

### 15-Aug-2026 to 19-Aug-2026

SUPERIOR STATEROOM	1656 USD pp
DELUXE STATEROOM	1987 USD pp
SIGNATURE SUITE	2401 USD pp
NOBLE SUITE	2732 USD pp

### 18-Aug-2026 to 22-Aug-2026

SUPERIOR STATEROOM	1685 USD pp
DELUXE STATEROOM	2022 USD pp
SIGNATURE SUITE	2392 USD pp

### 22-Aug-2026 to 26-Aug-2026

SUPERIOR STATEROOM	1685 USD pp
DELUXE STATEROOM	2022 USD pp
SIGNATURE SUITE	2392 USD pp

### 25-Aug-2026 to 29-Aug-2026

SUPERIOR STATEROOM	1656 USD pp
DELUXE STATEROOM	1987 USD pp
SIGNATURE SUITE	2401 USD pp
NOBLE SUITE	2732 USD pp

### 29-Aug-2026 to 02-Sep-2026

SUPERIOR STATEROOM	1656 USD pp
DELUXE STATEROOM	1987 USD pp
SIGNATURE SUITE	2401 USD pp
NOBLE SUITE	2732 USD pp

Wild Earth Travel

*Small Ships, Big Adventures*

**0800 945 3327** (within New Zealand) | +64 (0) 3 365 1355 | **1800 107 715** (within Australia)

info@wildearth-travel.com | wildearth-travel.com

# Wild Earth Travel

*Small Ships, Big Adventures*

**wildearth-travel.com**

**info@wildearth-travel.com**

## PRICING

### 01-Sep-2026 to 05-Sep-2026

SUPERIOR STATEROOM	1685 USD pp
DELUXE STATEROOM	2022 USD pp
SIGNATURE SUITE	2392 USD pp

### 05-Sep-2026 to 09-Sep-2026

SUPERIOR STATEROOM	1685 USD pp
DELUXE STATEROOM	2022 USD pp
SIGNATURE SUITE	2392 USD pp

### 08-Sep-2026 to 12-Sep-2026

SUPERIOR STATEROOM	1656 USD pp
DELUXE STATEROOM	1987 USD pp
SIGNATURE SUITE	2401 USD pp
NOBLE SUITE	2732 USD pp

### 12-Sep-2026 to 16-Sep-2026

SUPERIOR STATEROOM	1656 USD pp
DELUXE STATEROOM	1987 USD pp
SIGNATURE SUITE	2401 USD pp
NOBLE SUITE	2732 USD pp

### 15-Sep-2026 to 19-Sep-2026

SUPERIOR STATEROOM	1685 USD pp
DELUXE STATEROOM	2022 USD pp
SIGNATURE SUITE	2392 USD pp

### 19-Sep-2026 to 23-Sep-2026

SUPERIOR STATEROOM	1685 USD pp
DELUXE STATEROOM	2022 USD pp
SIGNATURE SUITE	2392 USD pp

### 22-Sep-2026 to 26-Sep-2026

SUPERIOR STATEROOM	1656 USD pp
DELUXE STATEROOM	1987 USD pp
SIGNATURE SUITE	2401 USD pp
NOBLE SUITE	2732 USD pp

### 26-Sep-2026 to 30-Sep-2026

SUPERIOR STATEROOM	1656 USD pp
DELUXE STATEROOM	1987 USD pp
SIGNATURE SUITE	2401 USD pp
NOBLE SUITE	2732 USD pp

### 29-Sep-2026 to 03-Oct-2026

SUPERIOR STATEROOM	1685 USD pp
DELUXE STATEROOM	2022 USD pp
SIGNATURE SUITE	2392 USD pp

### 03-Oct-2026 to 07-Oct-2026

SUPERIOR STATEROOM	2452 USD pp
DELUXE STATEROOM	2943 USD pp
SIGNATURE SUITE	3482 USD pp

# Wild Earth Travel

*Small Ships, Big Adventures*

**wildearth-travel.com**

**info@wildearth-travel.com**

## PRICING

### 06-Oct-2026 to 10-Oct-2026

SUPERIOR STATEROOM	2677 USD pp
DELUXE STATEROOM	3213 USD pp
SIGNATURE SUITE	3882 USD pp
NOBLE SUITE	4417 USD pp

### 10-Oct-2026 to 14-Oct-2026

SUPERIOR STATEROOM	2677 USD pp
DELUXE STATEROOM	3213 USD pp
SIGNATURE SUITE	3882 USD pp
NOBLE SUITE	4417 USD pp

### 13-Oct-2026 to 17-Oct-2026

SUPERIOR STATEROOM	2452 USD pp
DELUXE STATEROOM	2943 USD pp
SIGNATURE SUITE	3482 USD pp

### 17-Oct-2026 to 21-Oct-2026

SUPERIOR STATEROOM	2452 USD pp
DELUXE STATEROOM	2943 USD pp
SIGNATURE SUITE	3482 USD pp

### 20-Oct-2026 to 24-Oct-2026

SUPERIOR STATEROOM	2677 USD pp
DELUXE STATEROOM	3213 USD pp
SIGNATURE SUITE	3882 USD pp
NOBLE SUITE	4417 USD pp

### 24-Oct-2026 to 28-Oct-2026

SUPERIOR STATEROOM	2677 USD pp
DELUXE STATEROOM	3213 USD pp
SIGNATURE SUITE	3882 USD pp
NOBLE SUITE	4417 USD pp

### 27-Oct-2026 to 31-Oct-2026

SUPERIOR STATEROOM	2452 USD pp
DELUXE STATEROOM	2943 USD pp
SIGNATURE SUITE	3482 USD pp

### 31-Oct-2026 to 04-Nov-2026

SUPERIOR STATEROOM	2452 USD pp
DELUXE STATEROOM	2943 USD pp
SIGNATURE SUITE	3482 USD pp

### 03-Nov-2026 to 07-Nov-2026

SUPERIOR STATEROOM	2677 USD pp
DELUXE STATEROOM	3213 USD pp
SIGNATURE SUITE	3882 USD pp
NOBLE SUITE	4417 USD pp

### 07-Nov-2026 to 11-Nov-2026

SUPERIOR STATEROOM	2677 USD pp
DELUXE STATEROOM	3213 USD pp
SIGNATURE SUITE	3882 USD pp
NOBLE SUITE	4417 USD pp

# Wild Earth Travel

*Small Ships, Big Adventures*

**wildearth-travel.com**

**info@wildearth-travel.com**

## PRICING

### 10-Nov-2026 to 14-Nov-2026

SUPERIOR STATEROOM	2452 USD pp
DELUXE STATEROOM	2943 USD pp
SIGNATURE SUITE	3482 USD pp

### 14-Nov-2026 to 18-Nov-2026

SUPERIOR STATEROOM	2452 USD pp
DELUXE STATEROOM	2943 USD pp
SIGNATURE SUITE	3482 USD pp

### 17-Nov-2026 to 21-Nov-2026

SUPERIOR STATEROOM	2677 USD pp
DELUXE STATEROOM	3213 USD pp
SIGNATURE SUITE	3882 USD pp
NOBLE SUITE	4417 USD pp

### 21-Nov-2026 to 25-Nov-2026

SUPERIOR STATEROOM	2677 USD pp
DELUXE STATEROOM	3213 USD pp
SIGNATURE SUITE	3882 USD pp
NOBLE SUITE	4417 USD pp

### 24-Nov-2026 to 28-Nov-2026

SUPERIOR STATEROOM	2452 USD pp
DELUXE STATEROOM	2943 USD pp
SIGNATURE SUITE	3482 USD pp

### 28-Nov-2026 to 02-Dec-2026

SUPERIOR STATEROOM	2452 USD pp
DELUXE STATEROOM	2943 USD pp
SIGNATURE SUITE	3482 USD pp

### 01-Dec-2026 to 05-Dec-2026

SUPERIOR STATEROOM	2677 USD pp
DELUXE STATEROOM	3213 USD pp
SIGNATURE SUITE	3882 USD pp
NOBLE SUITE	4417 USD pp

### 05-Dec-2026 to 09-Dec-2026

SUPERIOR STATEROOM	2677 USD pp
DELUXE STATEROOM	3213 USD pp
SIGNATURE SUITE	3882 USD pp
NOBLE SUITE	4417 USD pp

### 08-Dec-2026 to 12-Dec-2026

SUPERIOR STATEROOM	2452 USD pp
DELUXE STATEROOM	2943 USD pp
SIGNATURE SUITE	3482 USD pp

### 12-Dec-2026 to 16-Dec-2026

SUPERIOR STATEROOM	2452 USD pp
DELUXE STATEROOM	2943 USD pp
SIGNATURE SUITE	3482 USD pp

# Wild Earth Travel

*Small Ships, Big Adventures*

**wildearth-travel.com**

**info@wildearth-travel.com**

## PRICING

### 15-Dec-2026 to 19-Dec-2026

SUPERIOR STATEROOM	2677 USD pp
DELUXE STATEROOM	3213 USD pp
SIGNATURE SUITE	3882 USD pp
NOBLE SUITE	4417 USD pp

### 19-Dec-2026 to 23-Dec-2026

SUPERIOR STATEROOM	2677 USD pp
DELUXE STATEROOM	3213 USD pp
SIGNATURE SUITE	3882 USD pp
NOBLE SUITE	4417 USD pp

### 22-Dec-2026 to 26-Dec-2026

SUPERIOR STATEROOM	2452 USD pp
DELUXE STATEROOM	2943 USD pp
SIGNATURE SUITE	3482 USD pp

### 26-Dec-2026 to 30-Dec-2026

SUPERIOR STATEROOM	2452 USD pp
DELUXE STATEROOM	2943 USD pp
SIGNATURE SUITE	3482 USD pp

### 29-Dec-2026 to 02-Jan-2027

SUPERIOR STATEROOM	2677 USD pp
DELUXE STATEROOM	3213 USD pp
SIGNATURE SUITE	3882 USD pp
NOBLE SUITE	4417 USD pp