



Wild Earth Travel

Small Ships, Big Adventures

wildearth-travel.com

info@wildearth-travel.com

CRUISING THE DALMATIAN COAST AND THE IONIAN SEA: ATHENS TO VENICE — WITH SMITHSONIAN JOURNEYS

In alliance with Smithsonian Journeys. This cruise is part of a collection of PONANT voyages that are specially-tailored for English-speaking travelers who want to engage with the world. In addition to the usual elements of the PONANT experience, the listed price for these voyages includes transfers to and from the ship, talks and discussions aboard ship by world class experts, and a shore excursion or activity in each port of call that encourages guests to embrace the sights, sounds, tastes, and smells of the local environment and culture. The eastern shore of the Adriatic Sea - the Dalmatian Coast - is rich in the culture and art of ancient, medieval, Renaissance, and Baroque worlds and home to some of the most charming and welcoming towns and villages to be found anywhere. Your voyage begins in Venice, the city of canals, from where you will sail the Adriatic Sea south towards the Dalmatian Coast. Call first on the island of Hvar and tour the island's charming principal town. Or you may choose to visit a lavender farm in the countryside and enjoy some of the most beautiful views available along the Croatian coast. The port of Ploče serves as your gateway to the Bosnian city of Mostar, which under the Ottoman Turks became a thriving administrative and cultural center. Severely damaged in the military conflict of the 1990s, the town was declared a World Heritage site and now showcases what the restoration work of UNESCO can accomplish. Set on a rocky peninsula jutting into the Adriatic Sea, Dubrovnik, despite a devastating earthquake in 1667 and the ravages of many wars, is one of Europe's best-preserved medieval cities and a designated UNESCO World Heritage site. Discover Dubrovnik's old city on a guided tour or visit the surrounding countryside before enjoying time at leisure

Wild Earth Travel

Small Ships, Big Adventures

0800 945 3327 (within New Zealand) | +64 (0) 3 365 1355 | **1800 107 715** (within Australia)

info@wildearth-travel.com | **wildearth-travel.com**

Wild Earth Travel

Small Ships, Big Adventures

wildearth-travel.com

info@wildearth-travel.com

to explore this marvelous city on your own in the evening. Be on deck as Le Bougainville sails into the deep, fjord-like Bay of Kotor to reach the port town of the same name, also a UNESCO World Heritage site, located at the head of the bay beneath towering mountains. This delightful town is the pride of Montenegro, and you will have a full day to explore its richly varied history. Continue down the coast to the Albanian port of Saranda, from which you may travel to the UNESCO World Heritage site of Butrint, whose ruins span 2,500 years and include the remains of a Greek acropolis, Roman theater, and 19th-century fortress. After cruising along the shores of the Ionian Sea, your next call is at the small port town of Itea. You may choose to visit Delphi, home of the oracle of Apollo, whose massive ruins dominate an entire hillside. Or travel to St. Lucas Monastery, which, like Delphi, is a UNESCO World Heritage site -- one of the most important monuments of Middle Byzantine art and architecture in the world. This evening, transit the Corinth Canal, a stunning example of maritime engineering prowess first used in 1893. Your journey comes to an end as your ship sails into Athens.



into Athens.

ITINERARY

Day 1 VENICE

Proud and eternal, Venice has reigned on its lagoon ever since the 6th century. You may think you know this city before even setting foot here. You will inevitably fall in love with the charm of the innumerable treasures of the Serenissima: Saint Mark's square, the basilica, Doges palace, the Grand Canal and the gondolas. Yet, secret Venice is also waiting for you to explore its little interlacing streets and canals, to ramble through its squares and to push open the doors of its churches. The city's extraordinary heritage shouldn't stop you from enjoying a glass of Spritz and a few tramezzini.

Day 2 HVAR

Off the coast of Split, Hvar will surprise you by its traditions that have not changed since Antiquity. The country's oldest town, Stari Grad, is here on this

Wild Earth Travel

Small Ships, Big Adventures

0800 945 3327 (within New Zealand) | +64 (0) 3 365 1355 | **1800 107 715** (within Australia)

info@wildearth-travel.com | **wildearth-travel.com**



Wild Earth Travel

Small Ships, Big Adventures

wildearth-travel.com

info@wildearth-travel.com

Dalmatian Island. The town nestles by a cove on the north-west coast, surrounded by dry stone wall structures on the Stari Grad plains. These have been designated a UNESCO World Heritage site because they were built in the time of the Ancient Greeks. From these parcels of land come wines and olive oil manufactured manually. In the upper part of town, it is possible to discover hams and cheeses made by local producers.

Day 3 PLOCE

Ploce is a port that shares with nearby Makarska a reputation for great beaches, upscale seafront promenades, and a vibrant nightlife. Ploce's Rupe Ethnographic Museum and Makarska's intriguing Shell Museum are both worth a visit. Ploce also serves as a gateway to the Bosnian city of Mostar, which under the Ottoman Turks became a thriving administrative and cultural center. Severely damaged in the military conflict of the 1990s, the town was declared a World Heritage site and now showcases the graceful Stari Most ("Old Bridge"), originally built in 1566, and the early 17th-century Turkish Tabacica Mosque, both carefully restored with help from UNESCO.

Day 4 DUBROVNIK

Emblem of the Dalmatian coast, Dubrovnik is magnificently positioned on a rocky spur. History is sovereign here, in this ancient city, now a listed UNESCO World Heritage site. You will perhaps be surprised by the proportions of La Placa, the central drag through the city. The sheer width of it can be explained by the fact that it straddles a former lagoon. The elegant houses along La Placa are built in the legendary travertine stone. At Pile gate, you will be greeted by the statue of the patron saint of Dubrovnik, and you can admire the coastline as you walk along the ramparts. But what's inside Fort Saint John, adjoining the outer walls? A maritime museum and an aquarium featuring rare fish from the Adriatic.

Day 5 KOTOR

Situated in one of Montenegro's most beautiful bays, the medieval city of Kotor is a small town full of charm, truly imbued with the traditions and stories of another time. Built between the 12th and 14th centuries, this village, a UNESCO World Heritage Site, has preserved many historical monuments from this epoch. During your stop, be sure to admire the impressive castle that dominates the town, and let yourself fall under the charm of its maze of small

streets and intimate squares on which folk festivals featuring magnificent colourful costumes are often organised.

Day 6 SARANDA

An historical harbour town on the south-west coast of Albania, Saranda is built on a lush green spur. Its streets lined with palms and maritime pines border the beaches of the Ionian sea at the mouth of Corfu Strait. This very ancient town has archaeological ruins dating from Antiquity, which you can visit as you walk along the waterfront.

Day 7 ITEA & CROSSING THE CORINTH CANAL

Tucked away in the Gulf of Corinth, this little port is situated in continental Greece, north-west of Athens. Take an easy stroll along the old cobblestone quays, while gazing at the summits encircling the Bay of Itea. We wouldn't be surprised if you are tempted by a visit to the Delphi Sanctuary. The sanctuary is located on a plateau on the slope of Mount Parnassus, just ten kilometres from Itea. A listed UNESCO World Heritage site, this is a once-in-a-lifetime experience whose ancient ruins are surrounded by steep mountains. The Corinth Canal cuts through the Isthmus of Corinth, turning the Peloponnese into an island as it separates the region from the Greek mainland. Inaugurated in 1893, the canal is a little over six kilometres long and enables merchant vessels and passenger to avoid a long 400-km detour around the peninsula. The two sides of the canal reach a height of approximately fifty metres. From the exterior decks, don't miss this unique opportunity to watch the ship as it navigates along the narrow strip of water encased between tall, ochre cliffs. What an experience!

Day 8 ATHENS

The Greek capital city is located on the edge of the Saronic gulf, in the east of the country. It bears a plural name in reference to the first villages that surround the Acropolis. You will be enchanted by the rocky plateau presided by its monuments listed as UNESCO World Heritage. In the city below, you can visit some of the liveliest districts in Athens: Plaka, with its maze of colourful streets, and where, in the evenings the drifting aroma of moussaka and garlic prawns will tickle your taste buds. The National Archaeological museum and the Cycladic Art Museum are also some of the city's key attractions and allow visitors to discover Athens' cultural past.

Wild Earth Travel

Small Ships, Big Adventures

0800 945 3327 (within New Zealand) | +64 (0) 3 365 1355 | **1800 107 715** (within Australia)

info@wildearth-travel.com | **wildearth-travel.com**



Wild Earth Travel

Small Ships, Big Adventures

wildearth-travel.com

info@wildearth-travel.com

Please Note:

Itineraries are subject to change.

Wild Earth Travel

Small Ships, Big Adventures

0800 945 3327 (within New Zealand) | +64 (0) 3 365 1355 | **1800 107 715** (within Australia)

info@wildearth-travel.com | **wildearth-travel.com**



Wild Earth Travel

Small Ships, Big Adventures

wildearth-travel.com

info@wildearth-travel.com

YOUR SHIP: LE BOREAL

YOUR SHIP:	Le Boreal
VESSEL TYPE:	Luxury Expedition / Cruise Ship
LENGTH:	142 meters
	264 (in twin cabins, 200 in
PASSENGER CAPACITY:	Antarctica)
BUILT/REFURBISHED:	2011

A superb mega-yacht with 132 cabins, she is the fruit of the expertise of the Italian Fincantieri shipyard and French sophistication, as interpreted by designer Jean-Philippe Nuel. Le Boreal remains faithful to our philosophy - to create a unique atmosphere, a subtle blend of luxury, intimacy and well-being. Superior materials, discreet elegance and a tasteful decor combined with exterior and interior lines to reflect a nautical mood, subtly revisited. On board, soothing neutral tones are enlivened by splashes of red, our signature theme linking tradition and innovation to create personal touches in the spirit of a "private yacht".

Cuisine

Loyal to the great French tradition, the haute cuisine on board is worthy of the finest restaurants, where discreet, attentive service is the hallmark.

Our two restaurants welcome you for breakfasts, lunch and dinner. The Gastronomic Restaurant, with a capacity of 268 persons, is situated on Le Liberte Deck and serves you French and international cuisine accompagnied by fine wine. On the Grill Restaurant, you will have the opportunity to eat outside

and enjoy buffet lunch and themed dinner.

Life On Board

Whether you want to join other guests in the theatre or games area (Wii™ consoles, etc), or relax on your own in a quiet corner of the library, Le Boreal has been designed to meet the needs of every guest.

Everything has been done to preserve the independence of each guest to suit their personal tastes: lounges for lectures and shows, a spa in partnership with Carita™, but also more intimate spaces such as the library and internet corner. Comfortable cabins, nearly all with private balcony, are available for families either as triples or as communicating cabins. There is also a games area with Wii™ consoles, children's menus, and a baby-sitting service. Just as if you were on a private yacht, your time is your own to do as you please.

Fitted with the latest equipment (Kinesis Wall, running machine) and in partnership with the famous Carita™ brand, the Beauty Centre on Le Boreal welcomes you for some unforgettable moments of relaxation and pampering (beauty treatments, hairdresser, hammam, balneotherapy).



Wild Earth Travel

Small Ships, Big Adventures

0800 945 3327 (within New Zealand) | +64 (0) 3 365 1355 | **1800 107 715** (within Australia)

info@wildearth-travel.com | **wildearth-travel.com**



Wild Earth Travel

Small Ships, Big Adventures

wildearth-travel.com

info@wildearth-travel.com



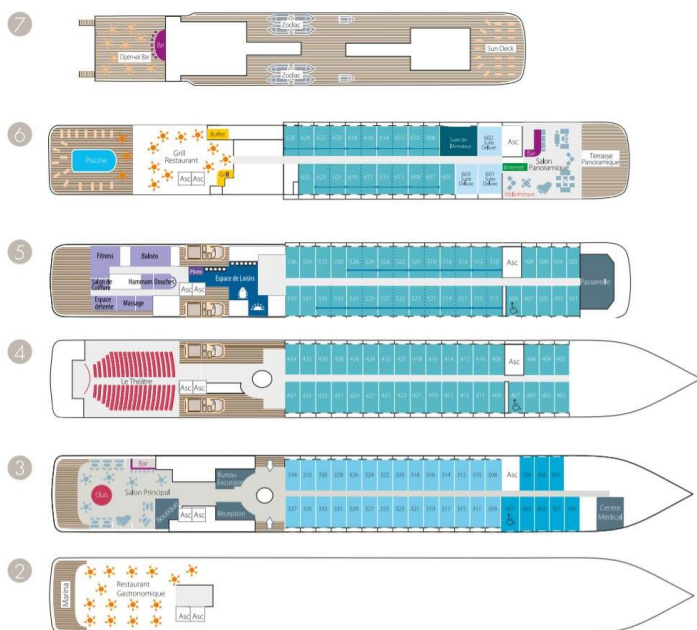
eotherapy).

Wild Earth Travel
Small Ships, Big Adventures

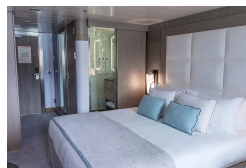
0800 945 3327 (within New Zealand) | +64 (0) 3 365 1355 | 1800 107 715 (within Australia)

info@wildearth-travel.com | wildearth-travel.com

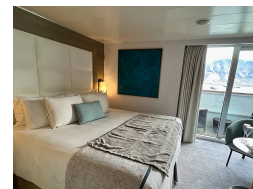
INSIDE YOUR SHIP



Deluxe Stateroom



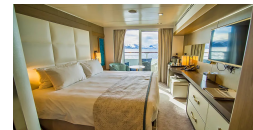
Deluxe Suite



Prestige Deck 4



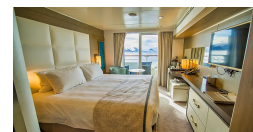
Prestige Deck 5



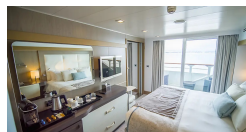
Prestige Deck 5 Suite



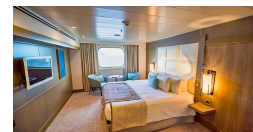
Prestige Deck 6



Prestige Deck 6 Suite



Superior Stateroom





Wild Earth Travel

Small Ships, Big Adventures

wildearth-travel.com

info@wildearth-travel.com

PRICING

18-Jun-2026 to 25-Jun-2026

Superior Stateroom	9840 AUD pp
Deluxe Stateroom	10630 AUD pp
Prestige Deck 4	11740 AUD pp
Prestige Deck 5	12300 AUD pp
Prestige Deck 6	12970 AUD pp
Deluxe Suite	17890 AUD pp
Prestige Deck 5 Suite	24050 AUD pp
Prestige Deck 6 Suite	25280 AUD pp

ADDITIONAL CHARGES:

Port Taxes & Fees 520 AUD pp



Wild Earth Travel
Small Ships, Big Adventures

0800 945 3327 (within New Zealand) | +64 (0) 3 365 1355 | **1800 107 715** (within Australia)

info@wildearth-travel.com | **wildearth-travel.com**



Wild Earth Travel

Small Ships, Big Adventures

wildearth-travel.com

info@wildearth-travel.com

SPECIAL OFFERS

Online prices reflect the current brochure fare savings of up to 30%. Prices may change based on demand. Terms and conditions apply. This special offer is subject to availability. Please contact us for more details.

Wild Earth Travel

Small Ships, Big Adventures

0800 945 3327 (within New Zealand) | +64 (0) 3 365 1355 | **1800 107 715** (within Australia)

info@wildearth-travel.com | **wildearth-travel.com**