



Wild Earth Travel

Small Ships, Big Adventures

wildearth-travel.com

info@wildearth-travel.com

CRUISE THE ARCTIC: ICELAND AND EAST GREENLAND

Embark on the extraordinary "Cruise the Arctic: Iceland and East Greenland" luxury cruise that mostly journeys from Reykjavik, Iceland, to East Greenland and back to Reykjavik. This round trip adventure includes breathtaking landscapes and rare wildlife sightings. Start and conclude in the vibrant Icelandic capital, ensuring a full-circle exploration of these northern wonders. On this voyage, begin at Reykjavik, home to architectural wonders, like Hallgrímskirkja and Harpa Concert Hall. Traverse Iceland's Westfjords to see the majestic Dynjandi waterfall, and discover Greenland's remote town of Íttoqqortoormiit, populated by a resilient Inuit community. The world's largest fjord system, Scoresby Sund, and the dramatic Kong Oscar Fjord boast surreal natural beauty, offering a chance to observe elusive wildlife like narwhals. Your journey is filled with engaging activities designed to enrich your experience of the Arctic. Join optional kayaking excursions, helmed by experienced guides, or refine your photography skills with onboard professionals. Sea days offer enriching lectures, libraries full of reference books, and stunning ocean views from observation decks, ensuring every moment is packed with discovery and relaxation.



ITINERARY

Days 0 - 1 Pre Cruise & Reykjavik

Make sure there is sufficient time to explore this diminutive but dramatic capital city. Despite its small size, you won't be short of things to see and do. To get your bearings, take the elevator to the top of Hallgrímskirkja. This church, designed by famed Icelandic architect Guðjón Samuelsson is one of the most distinctive buildings in town. When you return to earth, visit the city's other renowned building Harpa Concert Hall, located at the heart of Reykjavik's regenerated harbour - also the home of the Maritime Museum. Speaking of cultural spaces, tour the National Museum to learn the story of Iceland from

Wild Earth Travel
Small Ships, Big Adventures

0800 945 3327 (within New Zealand) | +64 (0) 3 365 1355 | 1800 107 715 (within Australia)

info@wildearth-travel.com | wildearth-travel.com



wildearth-travel.com

info@wildearth-travel.com

past to present. The Reykjavik Art Museum houses an impressive contemporary collection including eye-catching pieces by Erro. And, of course, just 50 kilometres outside the city lies Thingvellir National Park, the site of Iceland's original Viking parliament.

Day 2 Dynjandi Waterfall

Considered one of Iceland's most impressive falls, the thunderous Dynjandi waterfall in the Westfjords region gives the impression of a bridal veil as it spreads down ever-growing cascades. The walk takes 15 minutes passing five smaller waterfalls.

Day 3 Day at sea

Sea days are rarely dull. Take the time to sit back and let the world go by. The ship's observation decks provide stunning views of the passing ocean. A day at sea gives you the opportunity to mingle with other passengers and share your experiences of this incredible trip or head to our library which is stocked full of reference books. Get an expert's view in one of our on-board lectures or perhaps perfect your photography skills with invaluable advice from our onboard professional photographers.

Day 4 Ittoqqortoormiit

In the southeastern part of Greenland, the city of Ittoqqortoormiit appears, on the territory of which only 500 people live. A thick layer of sea ice prevents ships from approaching the city's port for nine months of the year, so he arrived in this remote city. Ittoqqortoormiit was founded in 1925 by the Danish explorer Einar Mikkelsen and a group of about 80 Inuit, covering a vast hunting ground. There is still hunting and sea fishing. The territory of Ittoqqortoormiit is home to white foxes, bears and seal colonies.

Days 5-6 Scoresbysund

The world's largest fjord system, Scoresbysund spans over 350 km into Greenland's heart. This vast network of fjords, glaciers and icebergs is framed by towering basalt mountains, which shield Greenland's wildlife from Arctic winds. Muskoxen, Arctic foxes and mountain hares roam the land, while little

auks, puffins, fulmars, snowy owls, gyrfalcons and great black-backed gulls soar overhead. Seals and whales are common sightings in the waters.

Days 7-8 Kong Oscar Fjord

Kong Oscar Fjord marks the northern edge of Scoresbysund and leads to Northeast Greenland National Park, the world's largest national park. Its vast valleys open to the sea, framed by towering mountains, deep waters and shimmering ice. This dramatic, hostile yet beautiful landscape features Berzelius Bjerg, a striking mountain with colourful strata, formed millions of years ago when these peaks lay beneath the ocean.

Day 9 Day at sea

Sea days are rarely dull. Take the time to sit back and let the world go by. The ship's observation decks provide stunning views of the passing ocean. A day at sea gives you the opportunity to mingle with other passengers and share your experiences of this incredible trip or head to our library which is stocked full of reference books. Get an expert's view in one of our on-board lectures or perhaps perfect your photography skills with invaluable advice from our onboard professional photographers.

Day 10 Isafjordur

Surrounded by fjords in the Westfjords region, Ísafjörður is a bustling fishing town and cultural center in northwest Iceland with cafes, restaurants and museums. The Heritage Museum, also known as the Maritime Museum, houses some of the country's oldest buildings and explores the region's fishing heritage through compelling exhibits. Nearby, Ósvör is a replica of a 19th-century Icelandic fishing station.

Day 11 Reykjavik

Make sure there is sufficient time to explore this diminutive but dramatic capital city. Despite its small size, you won't be short of things to see and do. To get your bearings, take the elevator to the top of Hallgrímskirkja. This church, designed by famed Icelandic architect Guðjón Samuelsson is one of the most distinctive buildings in town. When you return to earth, visit the city's



Wild Earth Travel

Small Ships, Big Adventures

wildearth-travel.com

info@wildearth-travel.com

other renowned building Harpa Concert Hall, located at the heart of Reykjavik's regenerated harbour - also the home of the Maritime Museum. Speaking of cultural spaces, tour the National Museum to learn the story of Iceland from past to present. The Reykjavik Art Museum houses an impressive contemporary collection including eye-catching pieces by Erro. And, of course, just 50 kilometres outside the city lies Thingvellir National Park, the site of Iceland's original Viking parliament.

Please note:

Itineraries are subject to change.

Wild Earth Travel
Small Ships, Big Adventures

0800 945 3327 (within New Zealand) | +64 (0) 3 365 1355 | **1800 107 715** (within Australia)

info@wildearth-travel.com | **wildearth-travel.com**



Wild Earth Travel

Small Ships, Big Adventures

wildearth-travel.com

info@wildearth-travel.com

YOUR SHIP: DIANA

YOUR SHIP:	Diana
VESSEL TYPE:	Expedition Ship
LENGTH:	125 meters
PASSENGER CAPACITY:	192
BUILT/REFURBISHED:	2022-2023

Arriving in early 2023, SH Diana will be the largest ship in our fleet, providing elegant and spacious 5-star accommodation for 192 guests in 96 spacious staterooms and suites, the vast majority with large balconies. Operated by an onboard team of 140 she will provide the highest levels of personal service and take Swan Hellenic back to its roots when she launches, exploring the Mediterranean and its famous sites of antiquity. Now sit back, relax and take a moment to get to know this amazing new ship, purpose-designed for our unique cultural expedition cruises.

Named after the Ancient Roman goddess of light, the moon, hunting and the wilderness, SH Diana been specially designed for worldwide cruising to explore the most inspiring and inaccessible places on earth. Building on the outstanding amenities of her sister ships, she adds a dedicated Multifunctional Room next to the Observation Lounge, a Private Dining Room for special occasions, and two tenders which bring guests a comfortable alternative to Zodiacs for expedition landings. A Polar Class 6 ice-strengthened hull combines with extra-large stabilisers to make your journey as comfortable as possible.

SH Diana has been designed for immersive experiences, with extensive outside deck areas, multiple observation points and bright, open and relaxing public spaces with unobstructed views. The pleasure and safety of our guests is paramount at all times, cared for by our attentive crew and seasoned expedition leaders. Cutting edge hygiene technology protects the health of all on board to the highest standards and includes air conditioning with UV sanitisation systems.

SH Diana's 96 staterooms , including 11 suites, are each a superbly comfortable home from home and all feature panoramic sea views, a flame-effect fireplace, original works of art, plush couches, premium pocket sprung mattresses, en-suite bathrooms with glass-enclosed rain showers, and Egyptian cotton towels, bathrobes and sheets. A pillow menu offers customised head and neck comfort during rest, while a large flat screen TV, espresso machine with Illy premium coffee, tea making facilities with the finest Kusmi teas, and a minibar with refreshments enhance relaxation at any time. In-room dining is of course available at all hours.



all hours.

Wild Earth Travel
Small Ships, Big Adventures

0800 945 3327 (within New Zealand) | +64 (0) 3 365 1355 | **1800 107 715** (within Australia)

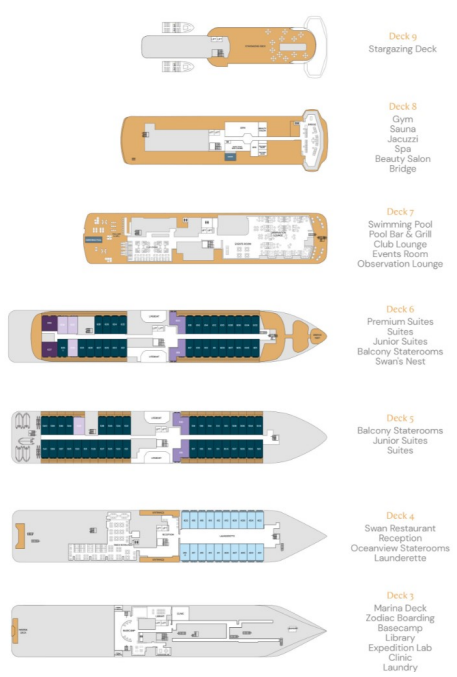
info@wildearth-travel.com | wildearth-travel.com



Wild Earth Travel
Small Ships, Big Adventures

wildearth-travel.com info@wildearth-travel.com

INSIDE YOUR SHIP



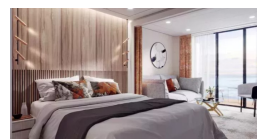
Balcony D5



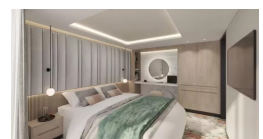
Balcony D6



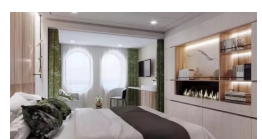
Balcony M5



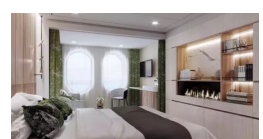
Junior Suite



Oceanview D4



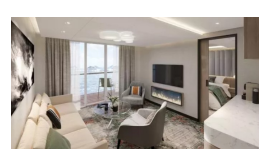
Oceanview M4



Premium Suite



Suite





Wild Earth Travel

Small Ships, Big Adventures

wildearth-travel.com

info@wildearth-travel.com

PRICING

29-Jul-2026 to 09-Aug-2026

Oceanview D4	19180 AUD pp
Oceanview M4	19980 AUD pp
Balcony D5	22980 AUD pp
Balcony M5	23880 AUD pp
Balcony D6	24880 AUD pp
Junior Suite	28680 AUD pp
Suite	33480 AUD pp
Premium Suite	38280 AUD pp

Wild Earth Travel
Small Ships, Big Adventures

0800 945 3327 (within New Zealand) | +64 (0) 3 365 1355 | **1800 107 715** (within Australia)

info@wildearth-travel.com | **wildearth-travel.com**