

# Wild Earth Travel

*Small Ships, Big Adventures*

**wildearth-travel.com**

**info@wildearth-travel.com**

## CROSSING THE ARCTIC CIRCLE EXPEDITION CRUISE

Discover Breathtaking Svalbard Cruises Spitsbergen is the largest and most beautiful island of the Svalbard archipelago, which consists of two smaller islands, Nordaustlandet and Edgeøya. Mostly, the cruises depart from the administrative center of this area named Longyearbyen. There are many attractions for travelers when choosing a Svalbard cruise. Dive into the world of icy landscapes, arctic climate, and raw nature. Take a chance to see polar ice caps, wild animals, and northern lights in person. As for activities, each voyage becomes truly memorable due to an inspiring photography experience, exciting sea kayaking adventure, and breathtaking views during a challenging hiking trip. What Can You See in Svalbard? Svalbard has a lot of sightseeing to offer travelers. As a former no man's land, it is a gorgeous northern terrain with rich wildlife and breathtaking views. It is easy to meet polar bears and walrus when you go on a Svalbard expedition cruise.



### ITINERARY

#### Day 1: Arrival in Edinburgh, Scotland (hotel night)

Welcome to Edinburgh, the capital of Scotland and starting point of our expedition. To provide you with more time to enjoy this metropolis rich in history and culture, we've arranged pre-cruise hotel accommodations. Relax and take a stroll through town, enjoying both medieval and classic 18th-century architecture. The famous Edinburgh Castle rises majestically above it all.

#### Day 2: Welcome Aboard!

Enjoy the morning and early afternoon at leisure. Each corner of Edinburgh's old streets opens beautiful unexpected vistas of green hills or a blue flash of the distant sea. In the afternoon, you will be transferred from the hotel to the ship in the nearby Port of Leith. Before dinner, there's time to explore the Sea Spirit, your home-away-from home for the next days.

**Wild Earth Travel**

*Small Ships, Big Adventures*

**0800 945 3327** (within New Zealand) | +64 (0) 3 365 1355 | **1800 107 715** (within Australia)

info@wildearth-travel.com | **wildearth-travel.com**

# Wild Earth Travel

*Small Ships, Big Adventures*



**wildearth-travel.com**

**info@wildearth-travel.com**

## Day 3: Kirkwall, Orkney Islands, Scotland

Kirkwall is a small, quiet town, with a gentle pace of life. The town is the capital of the remote and amazing Orkney archipelago. Kirkwall is first mentioned in Orkneyinga saga in 1046. Such a long history has left a rich heritage that we explore today. The most famous are the sandstone St Magnus Cathedral, considered the finest medieval building in the north of Scotland, the Bishop's Palace and the Earl's Palace. Included tour "Ancient treasures of Orkney with St Magnus Cathedral." Depart Kirkwall and head into the west of Mainland, Orkney's largest island. This tour passes through the gentle rolling landscape of Orkney and into the Neolithic Heartland of Orkney; an area designated as a World Heritage Site due to its wealth of pre-historic archaeology. Passing the Standing Stones of Stenness, we will stop at the Ring of Brodgar; a huge ceremonial circle of stones dating back almost 5000 years. We then continue on to the 5000-year-old village of Skara Brae, beautifully interpreted in the visitor centre. See the remarkable dwellings revealed from beneath the sand dunes by storms only 150 years ago. Hear some of the stories from your guide today en route back to Kirkwall. Once back in the island capital we will take a tour of St Magnus Cathedral, built by the Vikings during their 500 year reign over the islands.

## Day 4: Fair Isle, Shetland Islands

Fair Isle is a real paradise for birdwatchers. Huge number of birds inhabits the lush grasslands and spectacular cliffs. Over 345 species have been recorded here - more than anywhere else in Britain. During our walk across the island, we hope to see northern fulmars, kittiwakes, northern gannets, puffins, and great and arctic skuas.

## Day 5: Torshavn, Faroe Islands

National Geographic Traveler had designated Faroe Islands as "authentic, unspoiled and likely to remain so". It seems that the Nature spares no colours in "painting" the islands. Deep-green hills, bright blue sea, colourful houses and boats, orange-red puffins' beaks make the sceneries unforgettable, meanwhile traditional wooden dwellings with turf roofs look like they belong in a fairy tale. The rugged Faroese are proud of their Viking heritage and their love of the sea. Today we will explore Torshavn, the capital and largest city of Faroe Islands. Torshavn is a unique city, where history meets modernity, where picturesque old turfed houses and modern buildings stand side by side...

## Day 6: At sea

Presentations and workshops by our expert staff, as well as our range of onboard recreation facilities, ensure that this day at sea is not idly spent. Seabird viewing and whale sightings can be enjoyed from panoramic open decks as well as exterior stateroom windows and balconies.

## Day 7: Jan Mayen

Jan Mayen hosts the landscapes of breathtaking beauty and northernmost subaerial active volcano on the planet - the Beerenberg. The island is wild and uninhabited not including members of Norwegian weather station. The signboard at the entrance door says (translated from the Norwegian): "Theory is when you understand everything but nothing works. Practice is when everything works but nobody understands why. On this station, we combine theory and practice in a way that nothing works and nobody understands why". Northern fulmars, Kittiwakes, and Brunich's guillemots breeding on steep cliffs and slopes represent the birdlife of Jan Mayen.

## Day 8: At Sea

The lectures of our invited speakers prepare us for meeting with the unique Arctic wildlife and awesome landscapes of Svalbard.

## Day 9-12: Exploring Svalbard

This is a real expedition in a true High Arctic wilderness. As such, our route and exploration opportunities here are heavily dependent on the weather and sea ice conditions we encounter. Our experienced captain and expedition leader decide the itinerary and continually adjust plans as conditions and opportunities warrant. You can be sure that the best possible advantage will be taken of the circumstances presented to us by Nature in this wild and remote corner of the Arctic. Polar bears and other quintessential Arctic wildlife can be spotted anytime, anywhere in and around Svalbard. We exploit every opportunity to experience excellent wildlife viewing, to discover incredible scenery, and to walk in the footsteps of the historic polar expeditions that came before us. We anticipate exploring the spectacular fjords, coasts, and islands in the western part of Svalbard. This area contains the archipelago's

Wild Earth Travel

*Small Ships, Big Adventures*

**0800 945 3327** (within New Zealand) | +64 (0) 3 365 1355 | **1800 107 715** (within Australia)

info@wildearth-travel.com | **wildearth-travel.com**



# Wild Earth Travel

*Small Ships, Big Adventures*



**wildearth-travel.com**

**info@wildearth-travel.com**

most impressive scenery and some of the Arctic's best wildlife viewing opportunities. Deep fjords and narrow channels are flanked by jagged snowy mountain peaks. Immense tidewater glaciers calve icebergs into turquoise waters. Fields of flowering tundra are home to grazing reindeer and playful Arctic fox. Bountiful inshore and offshore waters are home to walrus and a wide variety of whales. The whole area is alive with migratory birds, including numerous rare species, taking advantage of summer's fecundity in 24-hour daylight. To complete the Arctic experience we also explore places rich with history. Our area of exploration contains the historical remnants of whaling camps, coal mining operations, trappers' cabins, staging areas for historic attempts to discover the North Pole, and even an abandoned polar research station. The days are filled with memorable excursions, sumptuous meals, presentations by our experts, and enough stunning scenery and wildlife to fill your camera and overwhelm your emotions.

## Day 13: Disembarkation in Longyearbyen, Svalbard

After breakfast we say farewell in the town of Longyearbyen, the administrative capital of the Norwegian territory of Svalbard. We provide a transfer to the airport and a flight to Oslo. Now when the first emotions have subsided you will have time to look back to your unforgettable Arctic experience and maybe to make plans for your next polar adventure?

### Please Note:

Itinerary, landings and all other activities during the cruise depend strongly on ice and weather conditions and are subject to the decisions of the Expedition Leader and the Captain of the vessel. Encounters with any mentioned wildlife cannot be guaranteed.

Wild Earth Travel

*Small Ships, Big Adventures*

**0800 945 3327** (within New Zealand) | +64 (0) 3 365 1355 | **1800 107 715** (within Australia)

info@wildearth-travel.com | **wildearth-travel.com**

# Wild Earth Travel

*Small Ships, Big Adventures*

**wildearth-travel.com**

**info@wildearth-travel.com**

## YOUR SHIP: SEA SPIRIT

<b>YOUR SHIP:</b>	<b>Sea Spirit</b>
<b>VESSEL TYPE:</b>	<b>Small Ship Expedition</b>
<b>LENGTH:</b>	<b>90 metres</b>
<b>PASSENGER CAPACITY:</b>	<b>114</b>
<b>BUILT/REFURBISHED:</b>	<b>1992 / 2017</b>

Like some of the birds we see in the Arctic and Antarctica, our m/v Sea Spirit is migratory and follows the sun, northbound in the summer and southbound in the winter, always ready for spontaneous discoveries - a pod of whales, a family of polar bears or a glaciated mountain vista. She is highly maneuverable and capable of navigating the narrow fjords of East Greenland and entering the small bays of Spitsbergen.

Onboard, we create a friendly and welcoming atmosphere for all our guests. They are united by one goal - to have a memorable wilderness experience and to become real polar adventurers. We believe that first-hand travel to such places makes one an ambassador for conservation, and helps strengthen our resolve to protect these natural environments for future generations.

Public areas include: Reception, Restaurant, Bar, Outdoor Bistro, Club Lounge, Library, Presentation Lounge, Infirmary, Gym, Bridge.

We have open Bridge policy. Talk to the Captain and officers. Watch landscapes from this special angle of view. Fix your location at a map of your expedition.



Wild Earth Travel

*Small Ships, Big Adventures*

**0800 945 3327** (within New Zealand) | +64 (0) 3 365 1355 | **1800 107 715** (within Australia)

info@wildearth-travel.com | wildearth-travel.com



# Wild Earth Travel

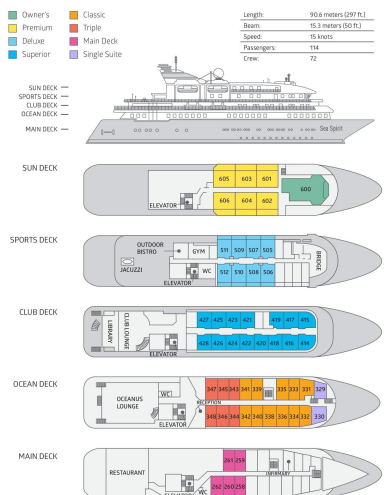
*Small Ships, Big Adventures*

[wildearth-travel.com](http://wildearth-travel.com)

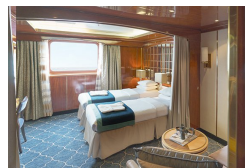
[info@wildearth-travel.com](mailto:info@wildearth-travel.com)

## INSIDE YOUR SHIP

### DECK PLAN M/V SEA SPIRIT



Classic Suite



Deluxe Suite



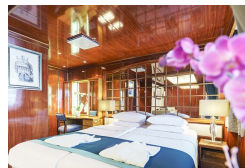
Main Deck Suite



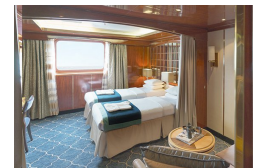
Owner's Suite



Premium Suite



Single Suite



Superior Suite



Triple Classic



# Wild Earth Travel

*Small Ships, Big Adventures*

**wildearth-travel.com**

**info@wildearth-travel.com**

## PRICING

**27-May-2026 to 08-Jun-2026**

<b>Triple Classic</b>	<b>11995 AUD pp</b>
<b>Main Deck Suite</b>	<b>16295 AUD pp</b>
<b>Classic Suite</b>	<b>17495 AUD pp</b>
<b>Superior Suite</b>	<b>17795 AUD pp</b>
<b>Deluxe Suite</b>	<b>19795 AUD pp</b>
<b>Premium Suite</b>	<b>21795 AUD pp</b>
<b>Single Suite</b>	<b>24195 AUD pp</b>
<b>Owner's Suite</b>	<b>27795 AUD pp</b>

## Optional extras & upgrades

### Photography. Free Option

The Polar Regions are perhaps the most photogenic on earth, with countless beautiful scenes presenting themselves every day. Endless expanses of ice, beaches crowded with seals or penguins, sunsets over unbroken horizons, starlit skies, and even the majestic northern lights – they all present fantastic photographic opportunities – and in order to make sure that you come home with some spectacular images we offer you the chance to learn and practice your photography alongside an experienced professional. Our expert Photographer will be on hand to answer your questions and give advice, both in the form of on-board lectures and workshops on shore. Explore the key elements of photography in a fun and relaxed setting, with plenty of opportunities for questions and feedback. Learn how to see light in a new way and experiment with the techniques of composition and framing.

**Wild Earth Travel**

*Small Ships, Big Adventures*

**0800 945 3327** (within New Zealand) | +64 (0) 3 365 1355 | **1800 107 715** (within Australia)

info@wildearth-travel.com | **wildearth-travel.com**