



Wild Earth Travel

Small Ships, Big Adventures

wildearth-travel.com

info@wildearth-travel.com

CROATIA'S DALMATIAN COAST BY SEA — WITH SMITHSONIAN JOURNEYS

In alliance with Smithsonian Journeys.

This cruise is part of a collection of PONANT voyages that are specially-tailored for English-speaking travelers who want to engage with the world. In addition to the usual elements of the PONANT experience, the listed price for these voyages includes transfers to and from the ship, talks and discussions aboard ship by world class experts, and a shore excursion or activity in each port of call that encourages guests to embrace the sights, sounds, tastes, and smells of the local environment and culture.

The eastern shore of the Adriatic Sea, the Dalmatian Coast , is rich in the culture and art of the ancient, medieval, and Renaissance worlds and home to some of the most charming and welcoming towns and villages to be found anywhere. The relatively short distances traveled on this voyage (it is less than 350 nautical miles from Venice to Dubrovnik) means that you have ample time to explore each port of call and savor what it has to offer-- the time to relax and soak in the sights and sounds, tastes and smells of a very special corner of the world.

After Venice , your first stop is in Rovinj on the Istrian Peninsula, where you may choose to tour the city, once the center of Venetian administration of the peninsula, or participate in a truffle hunt and tasting , or sample the vintages of the Matosec wine cellar.

A menu of choices awaits you in Zadar : a tour of the ancient

city's Roman ruins and medieval churches that includes a tasting of the local maraschino liqueur; or an exploration of the unique vegetation and marine fauna of the uninhabited Kornati Archipelago.

The third day of your voyage begins in Primo šten with a visit to Krka National Park and its famous travertine waterfalls, after which you sail to Split, home of the UNESCO World Heritage site of Diocletian's Palace, a massive structure that encloses the entire medieval town _ . Le Bougainville_ remains docked here until midnight, affording the opportunity to linger ashore well into the evening.

On the incredibly fertile island of Hvar , known for its fields of rosemary, lavender, and laurel, tour the island's charming principal town of Stari Grad , or get away from the coast and visit a lavender farm in the countryside, where you will encounter some of the most beautiful views available on Croatia.

About 30 miles from Hvar is the island of Korcula, where a morning tour of the quaint streets of this medieval city, once home to Marco Polo, includes a performance of the More ška sword dance. During lunch, sail to nearby Mljet Island, which local legend identifies with Calypso and Odysseus's seven-year dalliance, to explore Mljet National Park.

You will want to be on deck as _Le Bougainville_ sails into the deep, fjord-like Bay of Kotor to the UNESCO World Heritage town of the same name. This delightful place is the pride of

Wild Earth Travel

Small Ships, Big Adventures

0800 945 3327 (within New Zealand) | +64 (0) 3 365 1355 | **1800 107 715** (within Australia)

info@wildearth-travel.com | **wildearth-travel.com**

Wild Earth Travel

Small Ships, Big Adventures

wildearth-travel.com

info@wildearth-travel.com

Montenegro, and you will have a full day to explore its richly varied history. Or, if you prefer, you may enjoy a leisurely day at a beach club, where you can relax, stroll the beach, and swim.

Set on a rocky peninsula jutting into the sea, the UNESCO World Heritage site of Dubrovnik, the final stop on your voyage, is, despite a devastating earthquake in 1667 and the ravages of many wars, one of Europe's best-preserved medieval cities.



val cities.

ITINERARY

Day 1 - Venice

Proud and eternal, Venice has reigned on its lagoon ever since the 6th century. You may think you know this city before even setting foot here. You will

inevitably fall in love with the charm of the innumerable treasures of the Serenissima: Saint Mark's square, the basilica, Doges palace, the Grand Canal and the gondolas. Yet, secret Venice is also waiting for you to explore its little interlacing streets and canals, to ramble through its squares and to push open the doors of its churches. The city's extraordinary heritage shouldn't stop you from enjoying a glass of Spritz and a few tramezzini.

Day 2 - Rovinj

Rovinj is located in Istria, a region bordering Slovenia. This becomes apparent as you walk through its old cobblestoned town. There are many monuments of Venetian influence here. If you study the Balbi arch, you will see the winged lion, symbol of Venice. The bell-tower erected beside Saint Euphemia Cathedral was designed like the bell of Saint Mark in Venice. From the top of the tower, you can scan the entire historical district. To absorb its quaint atmosphere, take a walk in the ochre and sepia-coloured streets leading to bustling squares and terraces shaded by canvas awnings.

Day 3 - Zadar

The old fortified city of Zadar stands on peninsula in Northern Dalmatia. It has survived since Antiquity, as the ruins of a Roman forum illustrate. Beside these ruins, the architecture of the church of Saint Donat is Byzantine while the bell-tower of the Cathedral of Saint Anastasia is of Italian design. Your walks in the old town will be punctuated by diverse encounters with history. As you reach the shoreline, you'll be brought back to modern day because this front is animated by two contemporary architectural creations. Maybe you will hear the sound of the "Sea Organ" music played by the surf and the "Sun Salutations" solar light installation reflecting its luminous rays.

Day 4 - Primosten

Located south of Sibenik, Primosten is a picturesque village on the Dalmatian Coast, whose charm is distilled, via its narrow streets, through pretty stone

Wild Earth Travel

Small Ships, Big Adventures

0800 945 3327 (within New Zealand) | +64 (0) 3 365 1355 | **1800 107 715** (within Australia)

info@wildearth-travel.com | wildearth-travel.com



Wild Earth Travel

Small Ships, Big Adventures

wildearth-travel.com

info@wildearth-travel.com

houses and an architectural heritage influenced by the Venetian Republic. Built on a rocky peninsula, the historic city was connected to land by a mobile bridge from which it earned its name in the 16th century: in Croatian, *primostiti* means "to bridge". The high point of the village, the Church of St. George watches over the stunning bay enveloped in crystal-clear waters while, to the north of the peninsula, the charming beach of Raduca reveals itself between the skies and the pine forest. Further on, the vines of the renowned *babi* varietal, protected from erosion by low stone walls, complete this idyllic setting.

This harbour town has a very special location, presiding on a spur on the north-eastern coast of the island of Korčula. The ramparts in its medieval district provide perfect vantage points over the Pelješac peninsula. To get there, you can take the monumental staircase in the Revelin Tower. Another way is to climb the steps in the shade of palm trees from the Morska Vrata (Marine portal). As you make your way through the little streets, you'll see the bell-tower of Saint Mark's cathedral rise above you. This landmark will help you locate the house where Marco Polo was born. The island also has some of its own famous wines like the red Plavac and the white Posip.

Day 4 - Split

On the Dalmatian coast, the town of Split offers cultural visits in a seaside atmosphere. Close to the seafront shaded by palm trees, the historical centre listed as a UNESCO World Heritage site, boasts a unique building: the Diocletian's Palace. Here you will explore its galleries, courtyards with carved columns, as well as a former mausoleum converted into a church, namely Saint Domnius Cathedral. If you get peckish, stop off at a terrace in the Pjaca, the main square in the old town, where you can try a *palacinka*, a kind of pancake topped with melted cheese.

Day 6 - Mljet

Discover Mljet Island off the Pelješac peninsula. Known for its national park and its protected forests, this Croatian splendid, pristine island offers many opportunities for walking with bays linked to two salt water lakes. On the largest lake, Veliko Jezero, a small island is home to an old Benedictine monastery.

Day 5 - Hvar

Off the coast of Split, Hvar will surprise you by its traditions that have not changed since Antiquity. The country's oldest town, Stari Grad, is here on this Dalmatian Island. The town nestles by a cove on the north-west coast, surrounded by dry stone wall structures on the Stari Grad plains. These have been designated a UNESCO World Heritage site because they were built in the time of the Ancient Greeks. From these parcels of land come wines and olive oil manufactured manually. In the upper part of town, it is possible to discover hams and cheeses made by local producers.

Day 7 - Kotor

Situated in one of Montenegro's most beautiful bays, the medieval city of Kotor is a small town full of charm, truly imbued with the traditions and stories of another time. Built between the 12th and 14th centuries, this village, a UNESCO World Heritage Site, has preserved many historical monuments from this epoch. During your stop, be sure to admire the impressive castle that dominates the town, and let yourself fall under the charm of its maze of small streets and intimate squares on which folk festivals featuring magnificent colourful costumes are often organised.

Day 6 - Korčula

Day 8 - Dubrovnik

Emblem of the Dalmatian coast, Dubrovnik is magnificently positioned on a rocky spur. History is sovereign here, in this ancient city, now a listed UNESCO

Wild Earth Travel

Small Ships, Big Adventures

0800 945 3327 (within New Zealand) | +64 (0) 3 365 1355 | **1800 107 715** (within Australia)

info@wildearth-travel.com | **wildearth-travel.com**



Wild Earth Travel

Small Ships, Big Adventures

wildearth-travel.com

info@wildearth-travel.com

World Heritage site. You will perhaps be surprised by the proportions of La Placa, the central drag through the city. The sheer width of it can be explained by the fact that it straddles a former lagoon. The elegant houses along La Placa are built in the legendary travertine stone. At Pile gate, you will be greeted by the statue of the patron saint of Dubrovnik, and you can admire the coastline as you walk along the ramparts. But what's inside Fort Saint John, adjoining the outer walls? A maritime museum and an aquarium featuring rare fish from the Adriatic.

Please note:

Itineraries are subject to change.

Wild Earth Travel

Small Ships, Big Adventures

0800 945 3327 (within New Zealand) | +64 (0) 3 365 1355 | **1800 107 715** (within Australia)

info@wildearth-travel.com | **wildearth-travel.com**



Wild Earth Travel

Small Ships, Big Adventures

wildearth-travel.com

info@wildearth-travel.com

YOUR SHIP: LE BOUGAINVILLE

YOUR SHIP: Le Bougainville

VESSEL TYPE: Luxury

LENGTH:

PASSENGER CAPACITY: 92 cabins

BUILT/REFURBISHED: 2017/2018

Featuring innovative and environmentally-friendly equipment, elegantly designed cabins, spacious suites with large windows, and lounge areas that open onto the outside, this new limited-capacity yacht boasting just 92 cabins and suites will offer you a truly unique cruising experience.

As the first ship in a new series that remains true to the Ponant spirit, Le Bougainville will embody the unique atmosphere that is the cruise line's hallmark: a subtle blend of refinement, intimacy and comfort.

Aboard this ship that flies the French flag, you will experience the incomparable pleasure of an intimate cruise, with the possibility of exploring an ever-increasing range of destinations in an ethnic-chic ambiance with luxury service.

Experience a luxurious setting where the accent is on authenticity and passion for travel.

RESTAURANTS

As it is an essential part of French culture, gastronomy will naturally have pride of place aboard this new ship. Through its two restaurants, Le Bougainville will invite you on a journey to elegance and epicureanism.

In a relaxed atmosphere, a first dining area located on Deck 3

and able to seat 70 will serve grilled meats daily, along with a variety of salads and desserts.

To the back of Deck 4, you will find a 260 m² panoramic restaurant which can accommodate all of our passengers in a single sitting. Designed differently to that on our other ships, this dining area, which opens onto the outside, will have a buffet of salads, desserts and cheeses at your disposal. Our discreet and attentive crew will provide table service for hot meals.

PUBLIC AREAS

Like Le Boreal and its sisterships, Le Bougainville has many common areas that are designed and equipped to meet all of your needs while preserving the intimacy of each passenger.

A 140 m² reception area includes:

A reception/concierge desk, An excursions desk, The ship's administrative services, The sales office, manned by our Guest Relations Officer, Our 50 m² boutique which sells clothing, jewellery, beauty products, postcards and various accessories, Toilets accessible to passengers with reduced mobility.

A new hydraulic platform with adjustable height provides: Easier boarding than on any other cruise ship, Easier Zodiac embarkation and disembarkation for expeditions, Easier access to the sea for swimming and practising various water sports such as kayaking or paddle-boarding.

A pool deck offering: A pool with a panoramic view, equipped with a counter-current swimming system, A pleasant solarium, An outdoor bar and lounge with armchairs and sofas.

A 200 m² main lounge which can accommodate all of our passengers to share convivial moments and to host activities organised during the day or evening.

Wild Earth Travel

Small Ships, Big Adventures

0800 945 3327 (within New Zealand) | +64 (0) 3 365 1355 | **1800 107 715** (within Australia)

info@wildearth-travel.com | wildearth-travel.com

Wild Earth Travel

Small Ships, Big Adventures

wildearth-travel.com

info@wildearth-travel.com

Lastly, a theatre that seats 188, equipped with: The latest sound and lighting technology, A LED wall as the stage backdrop, for the projection of high-resolution images and videos.



and videos.

Wild Earth Travel

Small Ships, Big Adventures

0800 945 3327 (within New Zealand) | +64 (0) 3 365 1355 | **1800 107 715** (within Australia)

info@wildearth-travel.com | **wildearth-travel.com**



wildearth-travel.com

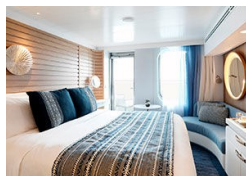
info@wildearth-travel.com

INSIDE YOUR SHIP

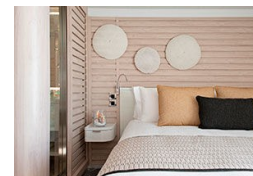


- Owner's Suite Deck 6
- Privilege Suites Deck 5-6
- Grand Deluxe Suites Deck 5-6
- Prestige Suites Deck 5-6
- Deluxe Suites Deck 5-6
- Prestige Cabins Deck 4-5-6
- Deluxe Cabins Deck 3

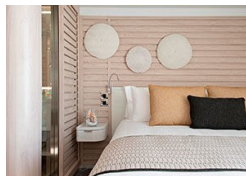
Deluxe Stateroom



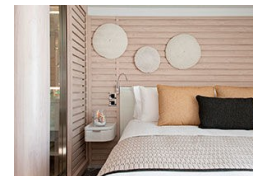
Deluxe Suite Deck 3



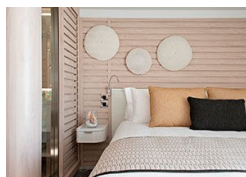
Deluxe Suite Deck 4



Deluxe Suite Deck 5



Deluxe Suite Deck 6



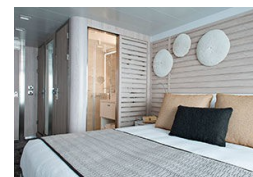
Grand Deluxe Suite Deck 5



Grand Deluxe Suite Deck 6



Prestige Deck 4





Wild Earth Travel

Small Ships, Big Adventures

wildearth-travel.com

info@wildearth-travel.com

PRICING

09-Jul-2026 to 16-Jul-2026

Deluxe Stateroom	8250 AUD pp
Prestige Deck 4	9100 AUD pp
Prestige Deck 5	9520 AUD pp
Prestige Deck 6	10040 AUD pp
Deluxe Suite Deck 4	13770 AUD pp
Deluxe Suite Deck 5	13770 AUD pp
Deluxe Suite Deck 6	13770 AUD pp
Deluxe Suite Deck 3	13770 AUD pp
Prestige Deck 5 Suite	18450 AUD pp
Prestige Deck 6 Suite	19390 AUD pp
Privilege Suite Deck 5	20320 AUD pp
Privilege Suite Deck 6	20320 AUD pp
Grand Deluxe Suite Deck 6	22270 AUD pp
Grand Deluxe Suite Deck 5	22270 AUD pp



Wild Earth Travel
Small Ships, Big Adventures

0800 945 3327 (within New Zealand) | +64 (0) 3 365 1355 | **1800 107 715** (within Australia)

info@wildearth-travel.com | **wildearth-travel.com**



Wild Earth Travel

Small Ships, Big Adventures

wildearth-travel.com

info@wildearth-travel.com

SPECIAL OFFERS

Up to 30% OFF! Prices online do not show the discounted rates. Terms and Conditions apply, special offer is subject to availability, please contact us for more details.

Wild Earth Travel

Small Ships, Big Adventures

0800 945 3327 (within New Zealand) | +64 (0) 3 365 1355 | **1800 107 715** (within Australia)

info@wildearth-travel.com | **wildearth-travel.com**