



Wild Earth Travel

Small Ships, Big Adventures

wildearth-travel.com

info@wildearth-travel.com

CORSICAN SHORES, UNDER SAIL ABOARD LE PONANT

Le Ponant, the first Relais & Chateaux sailing yacht. The finest travel address on the waters of the world.

"Eternity. It is the sea mingled with the sun", according to a poem by Rimbaud. Whether you are a lover of the sea or a curious traveller, experience once again the indescribable joy of navigating under sail, bathed by the wind and sea spray, surrounded by the elements. Take your place aboard Le Ponant, a majestic three-mast yacht with elegant lines and an interior design created by the Jean-Philippe Nuel studio to be a warm and intimate setting with a very distinctive personality. As if you were on your very own yacht, match your inner tempo to the boat's subtle oscillations and savour the freedom of living in the moment, being fully present for your trip.

Aboard its emblematic yacht, PONANT is reshaping the contours of cruising and invites you to experience a new way of discovering the wonderful Corsican shores. Departing from Nice, between wild paradises and heavenly beaches, iconic ports of call and private moments, the very essence of the Isle of Beauty will reveal itself.

As you are carried by the wind from one cape to the other, discover the multiple facets of the island. To the north, in Calvi or Saint Florent, the craggy terrain of the Balagne region and Cap Corse stretch out towards the sea. There, under the watchful eye of emblematic summits and of shores eroded by sea spray, the historic citadels and the villages clinging to the heady maquis invite you to immerse yourself in this

still-unspoiled natural environment.

Slowly, the south of the island and its idyllic beaches will beckon you. Drawn by the spellbinding song of these sandy sirens, you will heed the call at full sail. On the way, the stunning spectacle of the archipelago formed by Pointe de la Parata and the Sanguinaires Islands indicates the entrance to the Gulf of Ajaccio. This long line of crests seems to extend the coast like a backbone and, for a moment, your vessel, and perhaps even time, seem brought to a standstill.

You will then set a course towards the southern tip of the Isle of Beauty, to uncover its dreamy scenery. In the Gulf of Sant'Amanza, the azure Mediterranean and its fish-rich waters merge with the different varieties of plants and shrubs warmed by the sun, inviting you to refocus on what is truly important. With your senses awakened, you will then sail towards the incredible landscape offered by Bonifacio and the fortress with winding streets suspended on its ivory cliffs.

In the Gulf of Roccapiu, on the beach of Erbaghju, the iconic Domaine de Murtoli emerges. Nestled between fragrant scrubland and turquoise sea, shielded from prying eyes, this unique hotel destination invites you to celebrate the Corsican way of life at its most vibrant and generous.

The activities, designed for you and with you, create possibilities for returning to what is essential, in a setting conducive to contemplation.

Wild Earth Travel

Small Ships, Big Adventures

0800 945 3327 (within New Zealand) | +64 (0) 3 365 1355 | **1800 107 715** (within Australia)

info@wildearth-travel.com | **wildearth-travel.com**

Wild Earth Travel

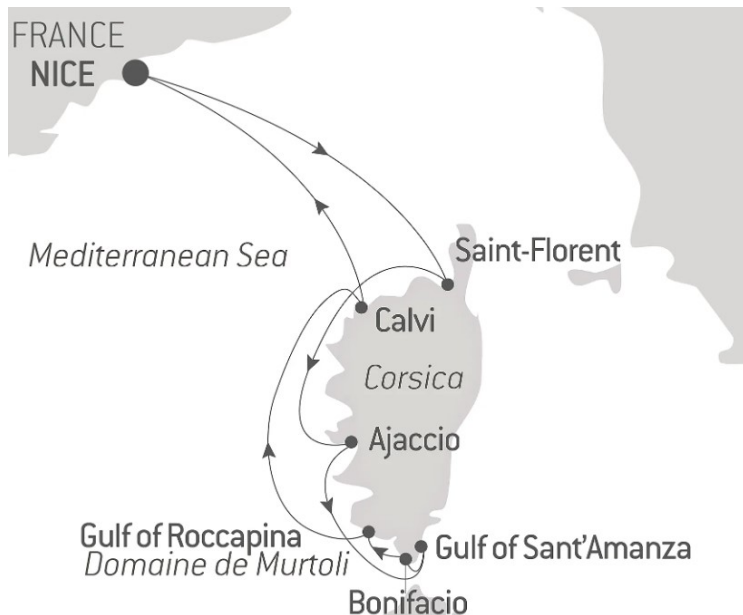
Small Ships, Big Adventures

wildearth-travel.com

info@wildearth-travel.com

Day 2 SAINT-FLORENT, CORSICA

At your own pace, immerse yourself in wild and stunning panoramas, away from the crowds, and enjoy moments spent in harmony with nature.



In the hollow of one of the most beautiful gulfs of the Mediterranean to which it owes its name, Saint-Florent is an ancient Genoese city whose citadel dominates the bay with its circular architecture. A link between the mountains of Upper Corsica and the Agriates desert, the fishing village has become a renowned seaside resort. In front of this jewel nestled in the hollow of a wild and isolated region, sublime beaches of fine sand border a sea of infinite turquoise shades. At the western tip of the gulf, the Tower of Mortella, built in the 16th century under the Republic of Genoa to prevent from invaders, stands watch. Like most of the towers that dot the Corsican coast, it is an emblematic and familiar symbol of the island.

Day 3 AJACCIO, CORSICA

Birth town of Napoleon Bonaparte, Ajaccio occupies a privileged location on the Île de Beauté. Rich in history and culture, the old "imperial city" is imbued with the memory of this son of the soil. As you stroll through the shaded streets in the old town centre, you'll come across the central market on place Foch, where you can taste one or two local specialities, for instance, brocciu, lonzu or the famous canistrelli.

Day 4 GULF OF SANT'AMANZA, CORSICA

In the south-east of Corsica, between Bonifacio and Porto-Vecchio, the gulf of Sant'Amanza, famous for its magnificent sandy beaches, is revealed. You will benefit from exceptional viewpoints over the landscapes of rare beauty formed by the limestone cliffs, covered with scrub, plunging into the turquoise waters and the granite rocks on the water's edge.

Day 5 BONIFACIO, CORSICA

The spectacular town of Bonifacio located on the very tip of southern Corsica, clings to a narrow promontory of white rock overhanging the turquoise waters of the Mediterranean. You can admire its limestone cliffs hewn out by the wind, before setting off on a cultural tour of its cultural treasures. From the little paved streets in the ancient Haute Ville, to the promenade on the open-air medieval chemin de ronde, this stunning town will take you on a

ith nature.

ITINERARY

Day 1 NICE

Capital of the Cote d'Azur, Nice is surrounded by an amphitheatre of hills and mountains that protects it from the wind. You will probably want to explore the Promenade des Anglais, where you can sit on one of the famous blue chairs laid out opposite the baie des Anges. The Chateau hill is also a very pleasant place to walk. This is the entrance to the old city, with its bustling markets and regional products along the main street, the Cours Saleya.

Wild Earth Travel

Small Ships, Big Adventures

0800 945 3327 (within New Zealand) | +64 (0) 3 365 1355 | 1800 107 715 (within Australia)

info@wildearth-travel.com | wildearth-travel.com



Wild Earth Travel

Small Ships, Big Adventures

wildearth-travel.com

info@wildearth-travel.com

journey back in time. Frequented or secluded, there are numerous beaches to choose from, all in keeping with the high standards of the "Île de Beauté".

Day 6 GULF OF ROCCAPINA

Nestled between Bonifacio and Sartene, the Gulf of Roccapina offers some of the most iconic landscapes in Corsica. Along the shore, rocky cliffs sculpted by erosion stand as guardians of idyllic beaches, basking in the delightful scent of myrtle. The nearby maquis hides a true treasure: the iconic estate of Murtoli. Stretching to the paradisiacal beach of Erbaghju, this hotel destination celebrates the Corsican way of life and its island traditions like nowhere else.

Day 7 CALVI, CORSICA

Nestled on a rocky spur in the north-west of Corsica, the port of Calvi offers its whiteness between two sapphire-coloured bays. Capital of the Balagne region, the Genoese city benefits from an exceptional natural setting between the abrupt relief of the central chain, fertile hills and long sandy beaches. From the promontory of the Notre-Dame-de-la-Serra chapel, built in the 19th century on the ruins of a 15th century sanctuary, you will not miss the sublime panorama of the seaside, the mountains and the Calvi citadel. A little further west, you will have the opportunity to discover with the peninsula of Revelatta, a wilder and more preserved part of Corsica.

Day 8 NICE

Capital of the Cote d'Azur, Nice is surrounded by an amphitheatre of hills and mountains that protects it from the wind. You will probably want to explore the Promenade des Anglais, where you can sit on one of the famous blue chairs laid out opposite the baie des Anges. The Chateau hill is also a very pleasant place to walk. This is the entrance to the old city, with its bustling markets and regional products along the main street, the Cours Saleya.

Please note:

Itineraries are subject to change.

Wild Earth Travel

Small Ships, Big Adventures

0800 945 3327 (within New Zealand) | +64 (0) 3 365 1355 | **1800 107 715** (within Australia)

info@wildearth-travel.com | **wildearth-travel.com**

YOUR SHIP: LE PONANT

YOUR SHIP:	Le Ponant
VESSEL TYPE:	Three-Master Sailing Ship
LENGTH:	288 feet
PASSENGER CAPACITY:	32
BUILT/REFURBISHED:	1991/2021

This sleek, expertly designed 88-metre-long and 56-metre-high three-master is one of the most majestic yachts in the world. In an age when everything is becoming computer controlled, it shines the spotlight back on the more manual, skilful art of sailing, combined with comfort, elegance, exclusivity and sustainability.

The striking lines, the quality of the materials, the sophistication of the way they're combined: the common areas, designed by French design studio Jean-Philippe Nuel, exude a sense of timelessness and offer a genuine connection with the exterior scenery and landscapes. Their design offers a blend of purity, excellence and a sense of easy living through the prominent use of stylish plain tones: off-white, taupe and caviar grey. No flourishes or embellishments here, but instead a unity between the common areas and the staterooms.

Exterior bar - Sun Deck

Sun Lounge area - Exterior bar

The Le Diamant panoramic restaurant - Zephyr Deck

Seats 34 guests - 61 m² - Buffet breakfast and dinner - Fine gastronomic cuisine made using exceptionally high quality organic and local products - Veuve Clicquot champagne - Wines

from French artisan wine producers and the regions visited.

The Marina - Alizes Deck

Two standard kayaks and two glass-bottomed kayaks - Four stand up paddleboards - Snorkelling equipment - Fishing equipment - Scuba diving equipment (for a group of four people) - Saltwater swimming pool - Small equipment for children (noodles, rings, armbands and safety equipment) - Bicycles

The lounge and Bar Emeraude - Alizes Deck

Interior surface : 92 m² - Seats 35 guests - Exterior surface : 85 m² - Seats 24 guests

The wellness space - Alizes Deck

Spa / massages (18.5 m²): one cabin offering massages and Biologique Recherche treatments - Gym (16 m²) with dedicated fitness instructor - Yoga sessions on the Sun Deck



he Sun Deck





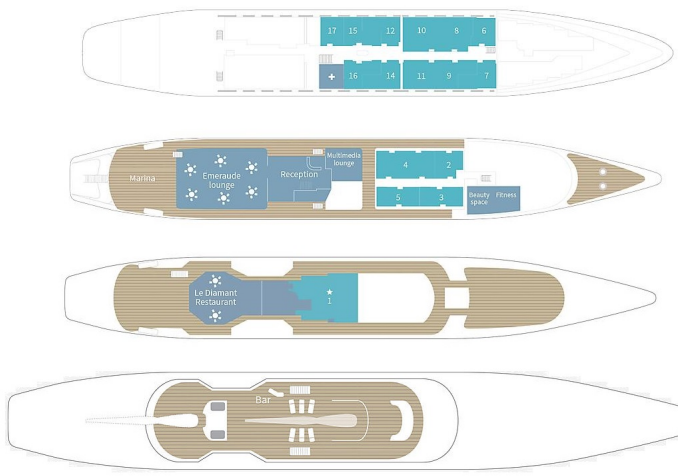
Wild Earth Travel

Small Ships, Big Adventures

wildearth-travel.com

info@wildearth-travel.com

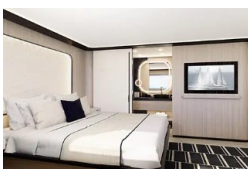
INSIDE YOUR SHIP



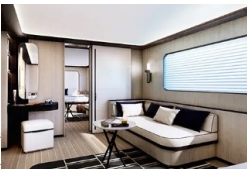
ALIZÉS GRAND PRIVILEGE SUITE



ALIZÉS PRESTIGE STATEROOM



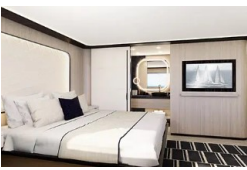
ALIZÉS PRIVILEGE SUITE



ALIZÉS STATEROOM



Alizés Prestige Stateroom



Alizés Privilege Suite



Alizés Stateroom



MISTRAL JUNIOR SUITE



Wild Earth Travel

Small Ships, Big Adventures

wildearth-travel.com

info@wildearth-travel.com

PRICING

17-May-2025 to 24-May-2025

Mistral Stateroom	17440 AUD pp
Mistral Prestige Stateroom	18290 AUD pp
Mistral Junior Suite	23510 AUD pp
Mistral Prestige Suite	25240 AUD pp
Alizés Stateroom	26990 AUD pp
Alizés Prestige Stateroom	27330 AUD pp
Alizés Privilege Suite	32200 AUD pp
ALIZÉS GRAND PRIVILEGE SUITE	37750 AUD pp
Owner Suite	46540 AUD pp

13-Sep-2025 to 20-Sep-2025

Mistral Stateroom	17440 AUD pp
Mistral Prestige Stateroom	18290 AUD pp
Mistral Junior Suite	23510 AUD pp
Mistral Prestige Suite	25240 AUD pp
Alizés Stateroom	26990 AUD pp
Alizés Prestige Stateroom	27330 AUD pp
Alizés Privilege Suite	32200 AUD pp
ALIZÉS GRAND PRIVILEGE SUITE	37750 AUD pp
Owner Suite	46540 AUD pp

20-Sep-2025 to 27-Sep-2025

Mistral Stateroom	18490 AUD pp
Mistral Prestige Stateroom	19400 AUD pp
Mistral Junior Suite	24940 AUD pp
Mistral Prestige Suite	26790 AUD pp
Alizés Stateroom	28640 AUD pp
Alizés Prestige Stateroom	29010 AUD pp
Alizés Privilege Suite	34180 AUD pp
ALIZÉS GRAND PRIVILEGE SUITE	40070 AUD pp
Owner Suite	46540 AUD pp

27-Sep-2025 to 04-Oct-2025

Mistral Stateroom	15850 AUD pp
Mistral Prestige Stateroom	16640 AUD pp
Mistral Junior Suite	21380 AUD pp
Mistral Prestige Suite	22960 AUD pp
Alizés Stateroom	24530 AUD pp
Alizés Prestige Stateroom	24860 AUD pp
Alizés Privilege Suite	29280 AUD pp
ALIZÉS GRAND PRIVILEGE SUITE	34340 AUD pp
Owner Suite	39890 AUD pp

Wild Earth Travel

Small Ships, Big Adventures

wildearth-travel.com

info@wildearth-travel.com

PRICING

30-May-2026 to 06-Jun-2026

MISTRAL STATEROOM	17200 AUD pp
MISTRAL PRESTIGE STATEROOM	18050 AUD pp
MISTRAL JUNIOR SUITE	23180 AUD pp
MISTRAL PRESTIGE SUITE	24890 AUD pp
ALIZÉS STATEROOM	26600 AUD pp
ALIZÉS PRESTIGE STATEROOM	26940 AUD pp
ALIZÉS PRIVILEGE SUITE	31730 AUD pp
ALIZÉS GRAND PRIVILEGE SUITE	37200 AUD pp

05-Sep-2026 to 12-Sep-2026

MISTRAL STATEROOM	17200 AUD pp
MISTRAL PRESTIGE STATEROOM	18050 AUD pp
MISTRAL JUNIOR SUITE	23180 AUD pp
MISTRAL PRESTIGE SUITE	24890 AUD pp
ALIZÉS STATEROOM	26600 AUD pp
ALIZÉS PRESTIGE STATEROOM	26940 AUD pp
ALIZÉS PRIVILEGE SUITE	31730 AUD pp
ALIZÉS GRAND PRIVILEGE SUITE	37200 AUD pp

12-Sep-2026 to 19-Sep-2026

MISTRAL STATEROOM	16080 AUD pp
MISTRAL PRESTIGE STATEROOM	16880 AUD pp
MISTRAL JUNIOR SUITE	21670 AUD pp
MISTRAL PRESTIGE SUITE	23270 AUD pp
ALIZÉS STATEROOM	24860 AUD pp
ALIZÉS PRESTIGE STATEROOM	25180 AUD pp
ALIZÉS PRIVILEGE SUITE	29650 AUD pp
ALIZÉS GRAND PRIVILEGE SUITE	34750 AUD pp

19-Sep-2026 to 26-Sep-2026

MISTRAL STATEROOM	17200 AUD pp
MISTRAL PRESTIGE STATEROOM	18050 AUD pp
MISTRAL JUNIOR SUITE	23180 AUD pp
MISTRAL PRESTIGE SUITE	24890 AUD pp
ALIZÉS STATEROOM	26600 AUD pp
ALIZÉS PRESTIGE STATEROOM	26940 AUD pp
ALIZÉS PRIVILEGE SUITE	31730 AUD pp
ALIZÉS GRAND PRIVILEGE SUITE	37200 AUD pp

Wild Earth Travel

Small Ships, Big Adventures

0800 945 3327 (within New Zealand) | +64 (0) 3 365 1355 | 1800 107 715 (within Australia)

info@wildearth-travel.com | wildearth-travel.com



Wild Earth Travel

Small Ships, Big Adventures

wildearth-travel.com

info@wildearth-travel.com

PRICING

26-Sep-2026 to 02-Oct-2026

MISTRAL STATEROOM	14730 AUD pp
MISTRAL PRESTIGE STATEROOM	15460 AUD pp
MISTRAL JUNIOR SUITE	19860 AUD pp
MISTRAL PRESTIGE SUITE	21330 AUD pp
ALIZÉS STATEROOM	22790 AUD pp
ALIZÉS PRESTIGE STATEROOM	23080 AUD pp
ALIZÉS PRIVILEGE SUITE	27180 AUD pp
ALIZÉS GRAND PRIVILEGE SUITE	31880 AUD pp

ADDITIONAL CHARGES:

Port Taxes 520 AUD pp

Wild Earth Travel

Small Ships, Big Adventures

0800 945 3327 (within New Zealand) | +64 (0) 3 365 1355 | **1800 107 715** (within Australia)

info@wildearth-travel.com | **wildearth-travel.com**



Wild Earth Travel

Small Ships, Big Adventures

wildearth-travel.com

info@wildearth-travel.com

SPECIAL OFFERS

Online prices reflect the current brochure fare savings of up to 30%. Prices may change based on demand. Terms and conditions apply. This special offer is subject to availability. Please contact us for more details.

Wild Earth Travel

Small Ships, Big Adventures

0800 945 3327 (within New Zealand) | +64 (0) 3 365 1355 | **1800 107 715** (within Australia)

info@wildearth-travel.com | **wildearth-travel.com**