



Wild Earth Travel

Small Ships, Big Adventures

wildearth-travel.com

info@wildearth-travel.com

CORSICA AND THE TUSCAN ARCHIPELAGO BY SEA — WITH SMITHSONIAN JOURNEYS

In alliance with Smithsonian Journeys.

This cruise is part of a collection of PONANT voyages that are specially-tailored for English-speaking travelers who want to engage with the world. In addition to the usual elements of the PONANT experience, the listed price for these voyages includes transfers to and from the ship, talks and discussions aboard ship by world class experts, and a shore excursion or activity in each port of call that encourages guests to embrace the sights, sounds, tastes, and smells of the local environment and culture.

This leisurely voyage around Corsica and along the coast of Tuscany explores the history of the region, especially the life of Napoleon Bonaparte, who was born on Corsica and exiled to Elba. It also allows for the discovery of the natural beauty found in the Corsican interior, in the lush forests surrounding Porto Ercole, and on the Cap Corse Peninsula. But is most particularly about _la belle vie_ and _la dolce vita_ as they are lived and enjoyed in the resort towns visited along the way-- the sun-drenched beaches, the charming marinas, and the grand villas of Calvi, Propriano, and above all, Portofino.

Departing from Nice, France, your first port of call is on the French island of Corsica, where you may join a guided walking tour of the town of Calvi including its Citadel, with stunning views over the sea and the houses below, and the house of Christopher Columbus, who is believed to have been born here. Or you may travel outside of the city to enjoy a panoramic drive

through the natural beauty of the island's interior, or to snorkel off the beach of the Revellatta Peninsula.

From the small marina-like harbor of Propriano, it is about an hour's drive to Bonifacio , stunningly perched on cliffs along Corsica's south coast. Here you stroll through the old town's winding medieval lanes of brightly colored houses and browse the stalls and shops of the old market while admiring dramatic views over rugged limestone cliffs that plunge to the sea below. For those who would prefer a day of relaxation, sun, and sand, shuttles will be available from the ship to Propriano's lovely beach.

The next four days are spent exploring the towns of Italy's Tuscan coast, learning their history, admiring their architecture, enjoying their beauty, and savoring their cuisine. Begin with a day in Porto Ercole on an island connected to the mainland by three isthmuses and dominated by the lush forests of Monte Argentario. Choose between a hike on a mountain trail that leads to Spanish forts built in the 16 th century to protect Tuscany from the Ottomans, or an e-bike tour through a nature reserve and around the Orbetello Lagoon.

On the tiny island of Giglio , visit its main town, Giglio Castello , a member of the consortium of Borghi pi u belli d'Italia, "The Most Beautiful Villages in Italy." There are two ways for you to reach the village--by minivan or by hiking to the hilltop along paths lined with local flora. Whichever mode of transport you choose, your guide will lead you through the town and the

Wild Earth Travel

Small Ships, Big Adventures

0800 945 3327 (within New Zealand) | +64 (0) 3 365 1355 | **1800 107 715** (within Australia)

info@wildearth-travel.com | **wildearth-travel.com**

Wild Earth Travel

Small Ships, Big Adventures

wildearth-travel.com

info@wildearth-travel.com

fortress that gives it its name, followed by a tasting of local wines.

Your exploration continues in Portoferraio, the main harbor of Elba. Most famous as the site of Napoleon Bonaparte's exile in 1814-15, Portoferraio offers a tour of Villa Dei Mulini, the Emperor's winter residence during exile and a visit to the charming village of Porto Azzurro and enjoy a wine tasting and sampling of Tuscan mezze at a local vineyard.

Portofino, once a small fishing village and now a favored haunt of the rich and famous, is fittingly located at the southern end of the Italian Riviera. Enjoy a guided tour of this iconic resort town, walking among the brightly colored houses and pausing for stunning views at the Portofino Promontory and at the lighthouse at Punto del Capo. Or, take to a kayak and paddle through the harbor and along the coast for a perspective on Portofino from the water.

Your final day of discovery is based in the port town of Saint-Florent on Corsica's north coast, where options include a panoramic drive through the rugged and beautiful landscapes of Cap Corse Peninsula; a nature walk through the aromatic gardens of oleander, cypress, rosemary, and wild olive in Saleccia Park; and a guided tour of the town of Saint-Florent, enclosed by walls built by the Genoese in the 15th century.

Your voyage ends back in Nice.



ck in Nice.

ITINERARY

Day 1 - Nice

Capital of the Cote d'Azur, Nice is surrounded by an amphitheatre of hills and mountains that protects it from the wind. You will probably want to explore the Promenade des Anglais, where you can sit on one of the famous blue chairs laid out opposite the baie des Anges. The Chateau hill is also a very pleasant place to walk. This is the entrance to the old city, with its bustling markets and regional products along the main street, the Cours Saleya.

Day 2 - Calvi, Corsica

Nestled on a rocky spur in the north-west of Corsica, the port of Calvi offers its whiteness between two sapphire-coloured bays. Capital of the Balagne region,

Wild Earth Travel

Small Ships, Big Adventures

0800 945 3327 (within New Zealand) | +64 (0) 3 365 1355 | **1800 107 715** (within Australia)

info@wildearth-travel.com | **wildearth-travel.com**



Wild Earth Travel

Small Ships, Big Adventures

wildearth-travel.com

info@wildearth-travel.com

the Genoese city benefits from an exceptional natural setting between the abrupt relief of the central chain, fertile hills and long sandy beaches. From the promontory of the Notre-Dame-de-la-Serra chapel, built in the 19th century on the ruins of a 15th century sanctuary, you will not miss the sublime panorama of the seaside, the mountains and the Calvi citadel. A little further west, you will have the opportunity to discover with the peninsula of Revelatta, a wilder and more preserved part of Corsica.

Day 3 - Propriano

In southern Corsica, the small port of Propriano amazes with its rich history and surprises with its incredible beauty. Here, the coastline edging the scrubland, with its distinctly Mediterranean scents, alternates between long sandy beaches and breathtaking coves. At the heart of this wild environment, the coastal town exudes its unique atmosphere. Established in the late 2nd century B.C., the town developed thanks to Etruscan, Greek, and later Carthaginian traders. From the port, the panorama of the Gulf of Valinco is mesmerizing, as the sea spray mingles with the beautiful southern light.

Day 4 - Porto Ercole

With its landscapes of undulating hills covered in lush meadows, narrow streets with colourful houses, and picturesque paths shaded by pines... Porto Ercole is a concentration of all of Tuscany's beauty. And what would it be without a fascinating, mystery-filled history? Overlooked by its 16th century fortress, this small village is renowned for having witnessed the final days of the famous painter Caravaggio, said to be buried there. On the Monte Argentario peninsula, you might have the chance to meet the fishermen of the Orbetello Lagoon, classed as a natural reserve, who perpetuate traditional fishing methods, or meet local wine, olive oil and cheese producers. For our sportier guests, the surrounding wild and pristine nature will provide the opportunity for a hike along the island's heights to enjoy breathtaking views.

Day 5 - Giglio

On the shores of the Tyrrhenian Sea, the small island of Giglio is home to a concentration of all of Tuscany's secrets and beauty. Fine sandy beaches and hidden coves compose a landscape in which the emerald sea serves as a setting for wild nature. This mountainous land is covered by garrigue on which pine forest and vineyards grow, a real paradise in the Mediterranean. A walk through the heart of this bucolic environment will also be the opportunity to discover rich history, as reflected in the medieval village of Giglio Castello.

Day 6 - Portoferraio, Elba

In the elbow of a creek on the northern coastline of Elba Island, a small corner of paradise awaits in the form of Portoferraio. As you approach its coastlines, you will make out the powerful and majestic contours of its Medici fortresses. Napoleon Bonaparte spent many of his 300 days in exile here. The Palazzina dei Mulini, his first imperial residence, whose gardens offer outstanding views of the sea, is a must-see. Historical treasures are followed by another kind of treasure, namely white sand beaches, and equally tempting local specialities including gurguglione and rice with cuttlefish ink.

Day 7 - Portofino

Close to the Cinque Terre, Portofino is the jewel of the Ligurian Riviera. This "small village that stretches like a half moon around a silent basin", described by Guy de Maupassant, is today a pretty, lively little port that has managed to preserve the authenticity of its maritime traditions, which have been recognised since Ancient times. Built in the hollow of a small natural cove sheltered by the pine forest, the village is at the heart of a protected maritime reserve. The shimmering colours of its house fronts and the exceptional location of this village have inspired many authors and artists. You will also see the Portofino lighthouse, immaculate in its green setting. Perched on the Punta del Capo, it watches over the peninsula and its postcard setting.

Day 8 - Saint-Florent, Corsica

Wild Earth Travel

Small Ships, Big Adventures

0800 945 3327 (within New Zealand) | +64 (0) 3 365 1355 | **1800 107 715** (within Australia)

info@wildearth-travel.com | **wildearth-travel.com**



Wild Earth Travel

Small Ships, Big Adventures

wildearth-travel.com

info@wildearth-travel.com

In the hollow of one of the most beautiful gulfs of the Mediterranean to which it owes its name, Saint-Florent is an ancient Genoese city whose citadel dominates the bay with its circular architecture. A link between the mountains of Upper Corsica and the Agriates desert, the fishing village has become a renowned seaside resort. In front of this jewel nestled in the hollow of a wild and isolated region, sublime beaches of fine sand border a sea of infinite turquoise shades. At the western tip of the gulf, the Tower of Mortella, built in the 16th century under the Republic of Genoa to prevent from invaders, stands watch. Like most of the towers that dot the Corsican coast, it is an emblematic and familiar symbol of the island.

Day 9 - Nice

Capital of the Cote d'Azur, Nice is surrounded by an amphitheatre of hills and mountains that protects it from the wind. You will probably want to explore the Promenade des Anglais, where you can sit on one of the famous blue chairs laid out opposite the baie des Anges. The Chateau hill is also a very pleasant place to walk. This is the entrance to the old city, with its bustling markets and regional products along the main street, the Cours Saleya.

Please note:

Itineraries are subject to change.

Wild Earth Travel

Small Ships, Big Adventures

0800 945 3327 (within New Zealand) | +64 (0) 3 365 1355 | **1800 107 715** (within Australia)

info@wildearth-travel.com | **wildearth-travel.com**



Wild Earth Travel

Small Ships, Big Adventures

wildearth-travel.com

info@wildearth-travel.com

YOUR SHIP: LE DUMONT D'URVILLE

YOUR SHIP: Le Dumont d'Urville

VESSEL TYPE: Luxury

LENGTH:

PASSENGER CAPACITY: 92 cabins

BUILT/REFURBISHED: 2017/2018

Featuring innovative and environmentally-friendly equipment, elegantly designed staterooms, spacious suites with large windows, and lounge areas that open onto the outside, this new limited-capacity yacht boasting just 92 staterooms and suites will offer you a truly unique cruising experience.

As the first ship in a new series that remains true to the Ponant spirit, Le Dumont d'Urville will embody the unique atmosphere that is the cruise line's hallmark: a subtle blend of refinement, intimacy and comfort.

Aboard this ship that flies the French flag, you will experience the incomparable pleasure of an intimate cruise, with the possibility of exploring an ever-increasing range of destinations in an ethnic-chic ambiance with luxury service.

Experience a luxurious setting where the accent is on authenticity and passion for travel.

RESTAURANTS

As it is an essential part of French culture, gastronomy will naturally have pride of place aboard this new ship. Through its two restaurants, Le Dumont d'Urville will invite you on a journey to elegance and epicureanism.

In a relaxed atmosphere, a first dining area located on Deck 3

and able to seat 70 will serve grilled meats daily, along with a variety of salads and desserts.

To the back of Deck 4, you will find a 260 m² panoramic restaurant which can accommodate all of our passengers in a single sitting. Designed differently to that on our other ships, this dining area, which opens onto the outside, will have a buffet of salads, desserts and cheeses at your disposal. Our discreet and attentive crew will provide table service for hot meals.

PUBLIC AREAS

Like Le Boreal and its sisterships, Le Dumont d'Urville has many common areas that are designed and equipped to meet all of your needs while preserving the intimacy of each passenger.

A 140 m² reception area includes: A reception/concierge desk, An excursions desk, The ship's administrative services, The sales office, manned by our Guest Relations Officer, Our 50 m² boutique which sells clothing, jewellery, beauty products, postcards and various accessories, Toilets accessible to passengers with reduced mobility.

A new hydraulic platform with adjustable height provides: Easier boarding than on any other cruise ship, Easier Zodiac embarkation and disembarkation for expeditions, Easier access to the sea for swimming and practising various water sports such as kayaking or paddle-boarding.

A pool deck offering: A pool with a panoramic view, equipped with a counter-current swimming system, A pleasant solarium, An outdoor bar and lounge with armchairs and sofas. A 200 m² main lounge which can accommodate all of our passengers to share convivial moments and to host activities organised during the day or evening.

Wild Earth Travel

Small Ships, Big Adventures

0800 945 3327 (within New Zealand) | +64 (0) 3 365 1355 | **1800 107 715** (within Australia)

info@wildearth-travel.com | wildearth-travel.com

Wild Earth Travel

Small Ships, Big Adventures

wildearth-travel.com

info@wildearth-travel.com

Lastly, a theatre that seats 188, equipped with: The latest sound and lighting technology, A LED wall as the stage backdrop, for the projection of high-resolution images and videos.



and videos.

Wild Earth Travel

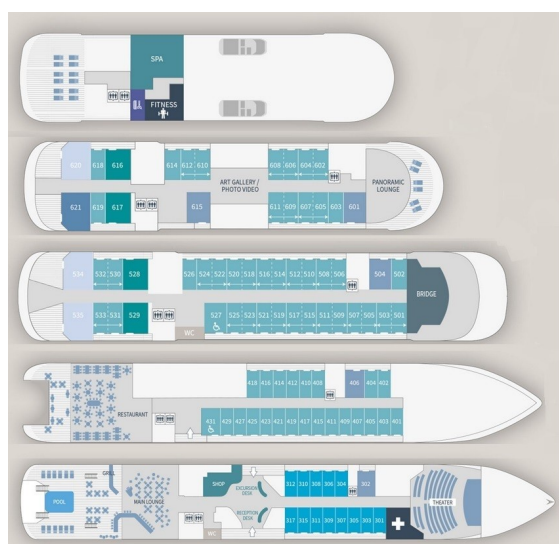
Small Ships, Big Adventures







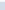
0800 945 3327 (within New Zealand) | +64 (0) 3 365 1355 | **1800 107 715** (within Australia)

info@wildearth-travel.com | **wildearth-travel.com**

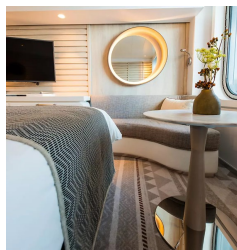
info@wildearth-travel.com

INSIDE YOUR SHIP

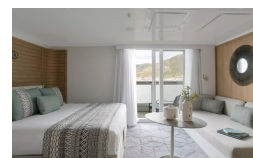


-  **Owner's Suite**
Deck 6
-  **Privilege Suites**
Deck 5-6
-  **Grand Deluxe Suites**
Deck 5-6
-  **Prestige Suites**
Deck 5-6
-  **Deluxe Suites**
Deck 5-6
-  **Prestige Cabins**
Deck 4-5-6
-  **Deluxe Cabins**
Deck 3

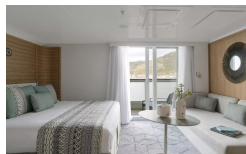
Deluxe Stateroom



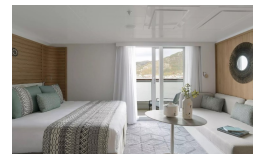
Deluxe Suite Deck 3



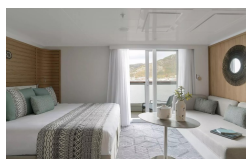
Deluxe Suite Deck 4



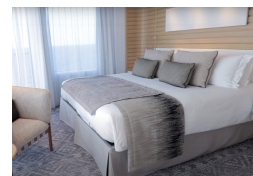
Deluxe Suite Deck 5



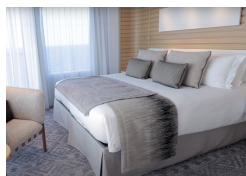
Deluxe Suite Deck 6



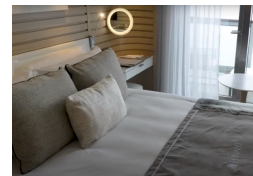
Grand Deluxe Suite Deck 5



Grand Deluxe Suite Deck 6



Prestige Deck 4





Wild Earth Travel

Small Ships, Big Adventures

wildearth-travel.com

info@wildearth-travel.com

PRICING

18-Jul-2026 to 26-Jul-2026

Deluxe Stateroom	9980 AUD pp
Prestige Deck 4	10490 AUD pp
Prestige Deck 5	10980 AUD pp
Prestige Deck 6	11590 AUD pp
Deluxe Suite Deck 3	18500 AUD pp
Deluxe Suite Deck 6	18500 AUD pp
Deluxe Suite Deck 4	18500 AUD pp
Deluxe Suite Deck 5	18500 AUD pp
Prestige Deck 5 Suite	20490 AUD pp
Prestige Deck 6 Suite	20990 AUD pp
Privilege Suite Deck 6	22000 AUD pp
Privilege Suite Deck 5	22000 AUD pp
Grand Deluxe Suite Deck 5	26500 AUD pp
Grand Deluxe Suite Deck 6	26500 AUD pp



Wild Earth Travel
Small Ships, Big Adventures

0800 945 3327 (within New Zealand) | +64 (0) 3 365 1355 | **1800 107 715** (within Australia)

info@wildearth-travel.com | **wildearth-travel.com**



Wild Earth Travel

Small Ships, Big Adventures

wildearth-travel.com

info@wildearth-travel.com

SPECIAL OFFERS

Online prices reflect the current brochure fare savings of up to 30%. Prices may change based on demand. Terms and conditions apply. This special offer is subject to availability. Please contact us for more details.

Wild Earth Travel

Small Ships, Big Adventures

0800 945 3327 (within New Zealand) | +64 (0) 3 365 1355 | **1800 107 715** (within Australia)

info@wildearth-travel.com | **wildearth-travel.com**