

Wild Earth Travel

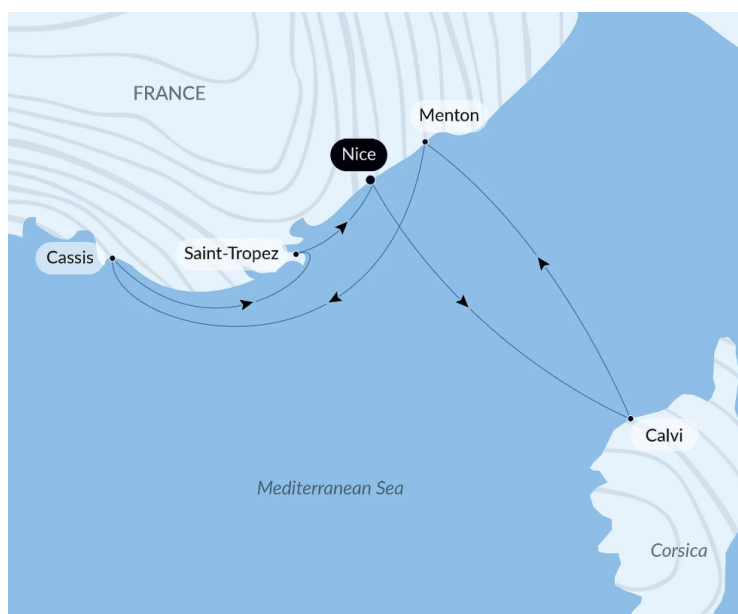
Small Ships, Big Adventures

wildearth-travel.com

info@wildearth-travel.com

CORSICA AND THE FRENCH RIVIERA LUXURY CRUISE

Two of the world's most popular holiday spots and an endless source of inspiration for the greatest artists, the iconic Cote d'Azur and the enchanting Isle of Beauty stand out against the pure blue of the sky and sea. On the shores of the Mediterranean, hidden among pine trees or clinging to ochre cliffs, timeless villages with citrus-coloured façades call to mind eternal images. At anchor in these picturesque ports designed for small ships, you will be lulled by the very essence of the French Riviera and Corsica, a world of glamour and historical charm.



ITINERARY

Day 1 - Nice

Capital of the Cote d'Azur, Nice is surrounded by an amphitheatre of hills and mountains that protects it from the wind. You will probably want to explore the Promenade des Anglais, where you can sit on one of the famous blue chairs laid out opposite the baie des Anges. The Chateau hill is also a very pleasant place to walk. This is the entrance to the old city, with its bustling markets and regional products along the main street, the Cours Saleya.

Day 1 - Calvi, Corsica

Nestled on a rocky spur in the north-west of Corsica, the port of Calvi offers its whiteness between two sapphire-coloured bays. Capital of the Balagne region,

Wild Earth Travel

Small Ships, Big Adventures

0800 945 3327 (within New Zealand) | +64 (0) 3 365 1355 | **1800 107 715** (within Australia)

info@wildearth-travel.com | **wildearth-travel.com**



Wild Earth Travel

Small Ships, Big Adventures

wildearth-travel.com

info@wildearth-travel.com

the Genoese city benefits from an exceptional natural setting between the abrupt relief of the central chain, fertile hills and long sandy beaches. From the promontory of the Notre-Dame-de-la-Serra chapel, built in the 19th century on the ruins of a 15th century sanctuary, you will not miss the sublime panorama of the seaside, the mountains and the Calvi citadel. A little further west, you will have the opportunity to discover with the peninsula of Revelatta, a wilder and more preserved part of Corsica.

Day 2 - Menton

City of art and history, Menton is located at the far eastern side of the Cote d'Azur. You will be won over by the Provence houses with their palms and lemon trees. Very close to the Saint-Michel-Archange basilica, take a mosey around the charming place aux Herbes, and the medieval streets that follow a sinuous plan. Here and there, you can see snatches of the coastline. These picturesque points of view have attracted artists since the beginning of the 20th century. Don't miss works by the most famous Menton figure: Jean Cocteau. They are exhibited in two museums: the Bastion museum and the Severin-Wunderman collection.

Day 3 - Cassis

A discreet outpost of the glittering French Riviera, the port of Cassis masterfully plays its Provençal music. Between the stunning calanques coves and Cap Canaille, the town stretches out with charming southern houses, their blinds repainted countless times, while the port exudes such a sunny and recognisable feeling, giving everything here a festive spirit. The surroundings are also well worth the visit: hills drooping beneath the vines, parasol pines curling up into the azure of the sky, prickly pears hanging onto white limestone, the Provence of the Fauvist painters unveils itself in this idyllic spot.

Day 4 - Saint-Tropez

Saint-Tropez is built on an attractive peninsula on the Cote d'Azur. In its delightful harbours, you will probably be surprised to see fishing trawlers alongside pleasure craft, yachts and jet-skis. You can do some celebrity spotting along the quays edged with Provence houses. Behind the waterfront, you can meander through the floral streets that lead to the baroque church of Notre-Dame-de-l'Assomption. At the top of the village, the citadel provides a panorama overlooking the entire coastline. It is festooned with justifiably

famous seaside sites, like the very beautiful Pampelonne beach.

Day 5 - Nice

Capital of the Cote d'Azur, Nice is surrounded by an amphitheatre of hills and mountains that protects it from the wind. You will probably want to explore the Promenade des Anglais, where you can sit on one of the famous blue chairs laid out opposite the baie des Anges. The Chateau hill is also a very pleasant place to walk. This is the entrance to the old city, with its bustling markets and regional products along the main street, the Cours Saleya.

Please note:

Itineraries are subject to change.

Wild Earth Travel

Small Ships, Big Adventures

0800 945 3327 (within New Zealand) | +64 (0) 3 365 1355 | **1800 107 715** (within Australia)

info@wildearth-travel.com | wildearth-travel.com



Wild Earth Travel

Small Ships, Big Adventures

wildearth-travel.com

info@wildearth-travel.com

YOUR SHIP: LE BOUGAINVILLE

YOUR SHIP: Le Bougainville

VESSEL TYPE: Luxury

LENGTH:

PASSENGER CAPACITY: 92 cabins

BUILT/REFURBISHED: 2017/2018

Featuring innovative and environmentally-friendly equipment, elegantly designed cabins, spacious suites with large windows, and lounge areas that open onto the outside, this new limited-capacity yacht boasting just 92 cabins and suites will offer you a truly unique cruising experience.

As the first ship in a new series that remains true to the Ponant spirit, Le Bougainville will embody the unique atmosphere that is the cruise line's hallmark: a subtle blend of refinement, intimacy and comfort.

Aboard this ship that flies the French flag, you will experience the incomparable pleasure of an intimate cruise, with the possibility of exploring an ever-increasing range of destinations in an ethnic-chic ambiance with luxury service.

Experience a luxurious setting where the accent is on authenticity and passion for travel.

RESTAURANTS

As it is an essential part of French culture, gastronomy will naturally have pride of place aboard this new ship. Through its two restaurants, Le Bougainville will invite you on a journey to elegance and epicureanism.

In a relaxed atmosphere, a first dining area located on Deck 3

and able to seat 70 will serve grilled meats daily, along with a variety of salads and desserts.

To the back of Deck 4, you will find a 260 m² panoramic restaurant which can accommodate all of our passengers in a single sitting. Designed differently to that on our other ships, this dining area, which opens onto the outside, will have a buffet of salads, desserts and cheeses at your disposal. Our discreet and attentive crew will provide table service for hot meals.

PUBLIC AREAS

Like Le Boreal and its sisterships, Le Bougainville has many common areas that are designed and equipped to meet all of your needs while preserving the intimacy of each passenger.

A 140 m² reception area includes:

A reception/concierge desk, An excursions desk, The ship's administrative services, The sales office, manned by our Guest Relations Officer, Our 50 m² boutique which sells clothing, jewellery, beauty products, postcards and various accessories, Toilets accessible to passengers with reduced mobility.

A new hydraulic platform with adjustable height provides: Easier boarding than on any other cruise ship, Easier Zodiac embarkation and disembarkation for expeditions, Easier access to the sea for swimming and practising various water sports such as kayaking or paddle-boarding.

A pool deck offering: A pool with a panoramic view, equipped with a counter-current swimming system, A pleasant solarium, An outdoor bar and lounge with armchairs and sofas.

A 200 m² main lounge which can accommodate all of our passengers to share convivial moments and to host activities organised during the day or evening.

Wild Earth Travel

Small Ships, Big Adventures

0800 945 3327 (within New Zealand) | +64 (0) 3 365 1355 | **1800 107 715** (within Australia)

info@wildearth-travel.com | wildearth-travel.com

Wild Earth Travel

Small Ships, Big Adventures

wildearth-travel.com

info@wildearth-travel.com

Lastly, a theatre that seats 188, equipped with: The latest sound and lighting technology, A LED wall as the stage backdrop, for the projection of high-resolution images and videos.



and videos.

Wild Earth Travel

Small Ships, Big Adventures

0800 945 3327 (within New Zealand) | +64 (0) 3 365 1355 | **1800 107 715** (within Australia)

info@wildearth-travel.com | **wildearth-travel.com**



wildearth-travel.com

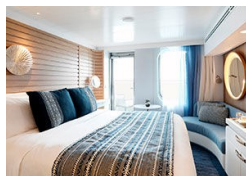
info@wildearth-travel.com

INSIDE YOUR SHIP

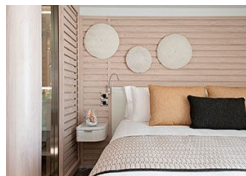


- Owner's Suite Deck 6
- Privilege Suites Deck 5-6
- Grand Deluxe Suites Deck 5-6
- Prestige Suites Deck 5-6
- Deluxe Suites Deck 5-6
- Prestige Cabins Deck 4-5-6
- Deluxe Cabins Deck 3

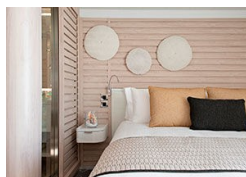
Deluxe Stateroom



Deluxe Suite Deck 4



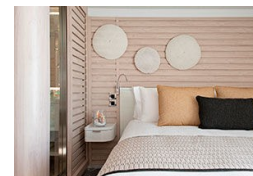
Deluxe Suite Deck 6



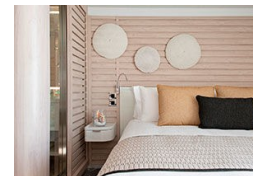
Grand Deluxe Suite Deck 6



Deluxe Suite Deck 3



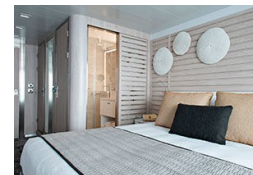
Deluxe Suite Deck 5



Grand Deluxe Suite Deck 5



Prestige Deck 4





Wild Earth Travel

Small Ships, Big Adventures

wildearth-travel.com

info@wildearth-travel.com

PRICING

20-May-2026 to 24-May-2026

Deluxe Stateroom	4850 AUD pp
Prestige Deck 4	5100 AUD pp
Prestige Deck 5	5350 AUD pp
Prestige Deck 6	5650 AUD pp
Deluxe Suite Deck 6	9120 AUD pp
Deluxe Suite Deck 3	9120 AUD pp
Deluxe Suite Deck 5	9120 AUD pp
Deluxe Suite Deck 4	9120 AUD pp
Prestige Deck 5 Suite	10110 AUD pp
Prestige Deck 6 Suite	10370 AUD pp
Privilege Suite Deck 6	10870 AUD pp
Privilege Suite Deck 5	10870 AUD pp
Grand Deluxe Suite Deck 5	13120 AUD pp
Grand Deluxe Suite Deck 6	13120 AUD pp



Wild Earth Travel
Small Ships, Big Adventures

0800 945 3327 (within New Zealand) | +64 (0) 3 365 1355 | **1800 107 715** (within Australia)

info@wildearth-travel.com | **wildearth-travel.com**



Wild Earth Travel

Small Ships, Big Adventures

wildearth-travel.com

info@wildearth-travel.com

SPECIAL OFFERS

Online prices reflect the current brochure fare savings of up to 30%. Prices may change based on demand. Terms and conditions apply. This special offer is subject to availability. Please contact us for more details.

Wild Earth Travel

Small Ships, Big Adventures

0800 945 3327 (within New Zealand) | +64 (0) 3 365 1355 | **1800 107 715** (within Australia)

info@wildearth-travel.com | **wildearth-travel.com**