

Wild Earth Travel

Small Ships, Big Adventures

wildearth-travel.com

info@wildearth-travel.com

CLASSIC RIVER CRUISE — BELGIUM TO PARIS

Embark on an enchanting 11-night classic cruise from Belgium to Paris aboard La Nouvelle Etoile. The journey begins in Bruges, the "Venice of the North," with a city tour and a champagne welcome on board. Explore picturesque towns like Ghent and Oudenaarde, visiting landmarks such as the cathedral with the famous painting "The Adoration of the Mystic Lamb." Cruise along the River Schelde and the Canal du Nord, passing through the Vermandois Hills of Picardie, with stops at places like Tournay and Peronne. Immerse yourself in history with visits to the war museum in Peronne and the village of Auvers sur Oise, where Van Gogh lived and painted. Discover the beauty of Claude Monet's home and gardens in Giverny before concluding the journey with a cruise to Paris, passing iconic landmarks like the Eiffel Tower. The Captain's Farewell Dinner marks the end of this picturesque voyage through the waterways of Belgium and France.



ITINERARY

Sunday, Day 1 Bruges

Guests are met in Bruges or Brussels and transferred to the hotel barge moored in the beautiful little town of Bruges, known as the "Venice of the North". After a champagne welcome, we visit Bruges for a city tour on one of the little canal boats which meander this picturesque town. Upon return to La Nouvelle Etoile, you'll have time to relax and get ready for your first of many gourmet meals on board.

Wild Earth Travel

Small Ships, Big Adventures

0800 945 3327 (within New Zealand) | +64 (0) 3 365 1355 | **1800 107 715** (within Australia)

info@wildearth-travel.com | **wildearth-travel.com**



Wild Earth Travel

Small Ships, Big Adventures

wildearth-travel.com

info@wildearth-travel.com

Monday, Day 2 Bruges to Ghent

This morning we join a guided walking tour of Bruges with a local guide. Return to the hotel barge for lunch. In the afternoon, you'll have some free time in Bruges. Later in the day we cruise to Ghent. Dinner on board.

Tuesday, Day 3 Ghent to Oudenaarde

After breakfast, we visit Ghent. Visit the cathedral with fabulous painting "The Adoration of the Mystic Lamb" painted by the van Eyck brothers. Return to the hotel barge for a cruise up the River Schelde to the town of Oudenaarde where we will moor for the night. Dinner on board.

Wednesday, Day 4 Oudenaarde to Tournay

A morning cruise further up the River Schelde will take us to the ancient town of Tournay with its famous "Pont des Troux" (Bridge with Holes) used to collect tolls on the rivers in the old times. This afternoon you can stroll around Tournay before dinner on board.

Thursday, Day 5 Tournay to Arleux

We continue along the Schelde through the town of Valenciennes to the junction of the Canal du Nord at the little French village of Arleux. Along the way, we visit the museum of fine arts in Valenciennes. Dinner on board.

Friday, Day 6 Arleux to Peronne

We begin our climb over the Vermandois Hills of Picardie through the many locks and several tunnels of the Canal du Nord. The scenery is spectacular, rural France at its best. There is a great towpath for the barge along the canal for a leisurely walk if you wish. After lunch, there will be a trip to Amiens to visit what must be one of the greatest of all Gothic cathedrals with its powerful towering spires and columns. Dinner on board.

Saturday, Day 7 Peronne to The Canal du Nord

After breakfast we visit the war museum in Peronne. Upon return, we will continue on the Canal du Nord. There will be plenty of opportunities to walk or bike while the barge travels from lock to lock. The cruise now continues along the Canal du Nord as it drops down into the valley of the Somme River.

Dinner on board.

Sunday, Day 8 The Canal du Nord to Compiègne

After breakfast, we cruise down to the Oise River valley to moor in the riverside town of Compiègne. There are many places to visit, including the train where the World War I armistice was signed, as well as the Royal Palace. Dinner on board.

Monday, Day 9 Compiègne to Auvers sur Oise

This morning we are now cruising down the Oise River valley where we stop at the village of Auvers sur Oise. This charming village is a van Gogh scene. Here is where he lived and painted most of his last and most important paintings, when he stayed in a small room above a local cafe. In the afternoon we walk around the town and visit the cemetery where Vincent and his brother are buried. Dinner on board.

Wild Earth Travel

Small Ships, Big Adventures

0800 945 3327 (within New Zealand) | +64 (0) 3 365 1355 | **1800 107 715** (within Australia)

info@wildearth-travel.com | wildearth-travel.com



Wild Earth Travel

Small Ships, Big Adventures

wildearth-travel.com

info@wildearth-travel.com

Tuesday, Day 10 Auvers sur Oise to Conflans

After a short morning cruise and an early lunch we drive to Giverny to visit the home and gardens of Claude Monet, probably the most famous of all the impressionist painters. The gardens will be at their most beautiful at this time of year where we will see the famous lily pond and the Japanese bridge that inspired so many of his paintings. This evening, we moor for the night in Conflans, which is the junction of the Oise and Seine Rivers. Dinner on board.

Wednesday, Day 11 Conflans to Paris

This morning we cruise to Bougival and visit Malmaison, the home of Napoleon. Here you'll see its many lavishly decorated rooms furnished by Josephine. We will rejoin La Nouvelle Etoile for an afternoon cruise up the River Seine past the Eiffel Tower to our Paris mooring for the Captains Farewell Dinner on board.

Thursday Day 12 Paris

After breakfast, disembark La Nouvelle Etoile and transfer to your drop-off point in Paris.

Please Note:

This is a sample itinerary and is subject to change.



Wild Earth Travel
Small Ships, Big Adventures

0800 945 3327 (within New Zealand) | +64 (0) 3 365 1355 | **1800 107 715** (within Australia)

info@wildearth-travel.com | **wildearth-travel.com**

Wild Earth Travel

Small Ships, Big Adventures

wildearth-travel.com

info@wildearth-travel.com

YOUR SHIP: LA NOUVELLE ETOILE

YOUR SHIP: La Nouvelle Etoile

VESSEL TYPE: Hotel Barge

LENGTH: 129 feet

PASSENGER CAPACITY: 8

BUILT/REFURBISHED:



La Nouvelle Etoile has been designed to offer a very high level of comfort and convenience, to provide a blend of traditional elegance and modern-day facilities.

The spacious, air conditioned saloon with its attractive cocktail bar, piano and elegant furnishings provides a truly sophisticated setting, while other amenities include an exercise room and a lift.

Each of the four generous 200sq ft cabin suites is lavishly equipped and the en-suite bathrooms feature double hand-basins and oversized showers. On deck there is a large sun deck with comfortable loungers and a spa pool, as well as bicycles for you to pedal along the nearby towpath.

This cruise on the luxurious La Nouvelle Etoile is a journey back in time through a picturesque landscape along two delightful canals, including France's oldest, the Canal de Briare. She also cruises in Alsace, Champagne, Holland, Belgium, Picardy, Germany and Luxembourg in Spring and Autumn.

Wild Earth Travel

Small Ships, Big Adventures

0800 945 3327 (within New Zealand) | +64 (0) 3 365 1355 | **1800 107 715** (within Australia)

info@wildearth-travel.com | **wildearth-travel.com**

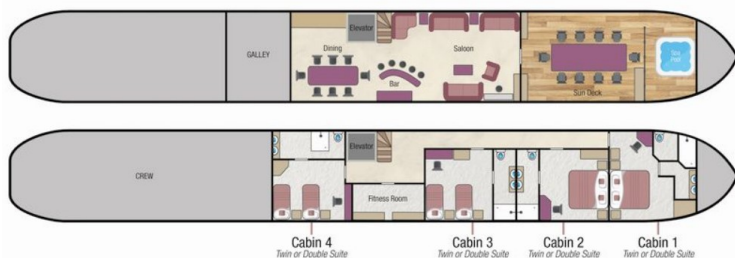
Wild Earth Travel

Small Ships, Big Adventures

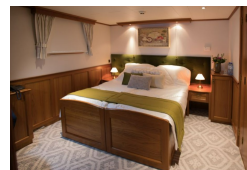
wildearth-travel.com

info@wildearth-travel.com

INSIDE YOUR SHIP



Cabin



Wild Earth Travel

Small Ships, Big Adventures

0800 945 3327 (within New Zealand) | +64 (0) 3 365 1355 | 1800 107 715 (within Australia)

info@wildearth-travel.com | wildearth-travel.com



Wild Earth Travel

Small Ships, Big Adventures

wildearth-travel.com

info@wildearth-travel.com

PRICING

18-May-2025 to 29-May-2025

Cabin

9990 EUR pp

Wild Earth Travel

Small Ships, Big Adventures

0800 945 3327 (within New Zealand) | +64 (0) 3 365 1355 | **1800 107 715** (within Australia)

info@wildearth-travel.com | **wildearth-travel.com**