



Wild Earth Travel

Small Ships, Big Adventures

wildearth-travel.com

info@wildearth-travel.com

CLASSIC FRANCE RIVER CRUISE — CANAL DU MIDI

The 340-year-old Canal du Midi skirts the sun-drenched shores of the Mediterranean before meandering inland through ancient villages, Roman fortifications and famed vineyards. A UNESCO World Heritage site, this canal is defined by its beauty, lined with shady plane trees which often touch to form an arc of green above the water from bank to bank, and crossed by pretty arched bridges. The warm Mediterranean weather and relaxed pace of life is sure to lull you into unwinding as your luxury Canal du Midi cruise meanders gently downstream.

Our Canal du Midi cruises are the perfect choice for cycling or walking along scenic tow paths, or simply watching the scenery pass by as you relax on the deck of your Canal du Midi barge with a cool drink. In the distance you can see the Pyrenees, whereas closer to hand are the vineyards that stretch for thousands of square miles. Enjoy private wine tastings at one of the various chateaux en route.

On a Canal du Midi boating holiday you will discover a marvellous blend of ancient Gallo-Roman and traditional influences reflected throughout this very historic region. Explore this further with your tour guide when you visit the medieval walled city of Carcassonne, the Cathar stronghold of Minerve or the underground Roman market in Narbonne.

Canal du Midi Cruise Highlights

With many of our cruises exploring some of the best wine-growing regions of France, our Canal du Midi cruise

itineraries never fail to impress! Oenophiles (wine-lovers), will appreciate our private wine tours and tastings at popular domaines such as the five-generation family-run Chateau Pech-Celeyran, aboard hotel barge Anjodi.

Carcassonne is a medieval fortified city set atop a hill overlooking the Aude River, and you can explore this city on any of our Canal du Midi cruises. Composed of a circle of towers and battlements, turrets and ramparts, with the longest city wall in Europe, it's a perfectly restored medieval town. The oldest sections of its encircling wall were built by the Romans in the third century AD. Rising against the backdrop of the Black Mountains, Carcassonne is striking not only during the day but also at night, when it is floodlit!

Sitting atop a rocky outcrop at the junction of the Cesse and Brian Rivers, Minerve, the ancient capital of Minervois is considered by many as a quintessentially medieval French village. First founded in the 8th century, it is surrounded by deep limestone gorges and offers magnificent views of surrounding countryside. Wander in the shadows of a 12th century Cathar fort surrounded by these gorges as part of our Canal du Midi cruise itineraries.

Narbonne was the first town outside of Italy to be colonised by the Romans and grew to be the largest port outside Rome. Once a coastal port, it prospered until the sea receded in the Middle Ages. It is now eight miles inland. Today Narbonne has a well-restored medieval quarter and is famous for its magnificent

Wild Earth Travel

Small Ships, Big Adventures

0800 945 3327 (within New Zealand) | +64 (0) 3 365 1355 | **1800 107 715** (within Australia)

info@wildearth-travel.com | **wildearth-travel.com**

Wild Earth Travel

Small Ships, Big Adventures

wildearth-travel.com

info@wildearth-travel.com

art-nouveau covered food market, Archbishop's Palace, Cathedral and Via Domitia (Roman road). Experience the very best of Narbonne on any of our Canal du Midi cruises.

Between Poilhes and Colombiers lies the Malpas Tunnel, the world's first section of navigable underground canal. At 525 feet, it is not particularly long, but it is certainly wide and high! Cut through sandstone, look up and you'll notice that most of the inside is lined with ornate stone vaulting. Local folklore suggests after the completion of the canal, that one of the workers built a small nook inside the ceiling of the tunnel and lived as a hermit inside it. When barges pass through the tunnel on our Canal du Midi cruises aboard Anjodi, look out as the captain and deckhands will often throw a piece of bread into the opening of the nook as a "gift for the hermit!"

And on the subject of architectural wonders and engineering feats, a key highlight on all our cruises are the unique lock experiences, such as the Seven-Rise Lock Staircase of Fonserannes on the Canal du Midi. On this Canal du Midi cruise highlight, you'll get to travel 21.5 metres up or down seven ovoid chambers, over 300 metres - passing through just one set of gates between each chamber, so water levels are maintained by use of a side pond.

Whilst our Canal du Midi cruises pass from lock to lock, now is the perfect time to hop-off, and perhaps stretch your legs or take advantage of the barge's bicycles to explore the towpath. Simply meet the barge at one of the approaching locks; or, if you'd like to explore further afield - many of our barges offer recommended cycling routes which your Captain will be provide more information on. If you prefer to use e-bikes, our Cruise

Team can arrange this for you at the time of booking (supplement applies).



t applies).

ITINERARY

Sunday, Day 1 Sallèles d'Aude to Le Somail

Guests are met in Narbonne and transferred by private chauffeured minibus to Enchanter where a champagne welcome and cruise to Le Somail awaits. Dinner on board.

Monday, Day 2 Le Somail to Roubia

This morning, we head to Mas d'Antonin for some truffle hunting. Follow the expert truffle dogs searching under the oak trees to find the "black gold" which we can help to dig up and understand its appearance, colour and most important - its aroma. Here, we'll also learn about the different olives of the region and taste the oils that they produce. After lunch on board, we cruise

Wild Earth Travel

Small Ships, Big Adventures

0800 945 3327 (within New Zealand) | +64 (0) 3 365 1355 | **1800 107 715** (within Australia)

info@wildearth-travel.com | **wildearth-travel.com**



Wild Earth Travel

Small Ships, Big Adventures

wildearth-travel.com

info@wildearth-travel.com

west along the Grand Bief, a stretch of canal without locks which follows the contours of the land for over 30 miles - a huge technological achievement for the 17th century- to the charming historical village of Roubia. On the way, we pass over France's oldest aqueduct, the Pont du Gard. Dinner on board.

Tuesday, Day 3 Roubia to Homs

After breakfast, our excursion is to Narbonne, a Roman Mediterranean capital where the Visigoth monarchs once lived. Enjoy a visit to the Archbishop's Palace, Roman Horreum and the indoor market at the hub of this bustling canalside town, where you will have time to shop or simply absorb the vibrant atmosphere. Afternoon cruise past vineyards and pine trees to Homs. This picturesque mooring in the heart of a French village presents a perfect opportunity to explore on foot, or perhaps try your hand at a game of boules, followed by an alfresco dinner on board.

Wednesday, Day 4 Homs to Puichéric

This morning we enjoy a private winery tour at the family-owned 17th century Chateau de Paraza whose 70 hectares of vineyards border the canal. After tasting some of their fine wines, among the best in the Languedoc, we have a private lunch in the chateau's salon. This afternoon, we return to the barge for a cruise to Puicheric, past l'Epanchoir - one of the bridges invented by Pierre Paul Riquet for the Canal du Midi. Dinner on board. board.

Thursday, Day 5 Puichéric to Marseillette

Today we visit the fortified hilltop village of Minerve, named one of the 'plus beaux villages de France', and learn about its dramatic medieval history as centre of the Cathar religious rebellions against the Catholic church. This afternoon, we'll cruise along the 340-year-old canal ascending its trademark locks as the relief becomes steeper. This is a great opportunity to walk or cycle from one lock to the next as Enchante cruises on, navigating the triple locking system. Dinner on board.

Friday, Day 6 Marseillette to Trèbes

Fascinating morning tour of Carcassonne. Dating back to the Gallo-Roman era, this is the most complete medieval fortified city in existence today with its 52 watchtowers, portcullis and extraordinary repertoire of defences, which resisted the many armies that tried to storm this glorious Camelot setting. This afternoon we squeeze through tight bridges and glide past picturesque vineyards and hamlets to Trèbes. Once a major ally to Carcassonne, this medieval town still retains unique paintings within its 13th century church. Captain's Farewell Dinner on board.

Saturday, Day 7 Trèbes

After breakfast, guests are transferred by private chauffeured minibus to their choice of location in Narbonne.

Please Note:

This is a sample itinerary and is subject to change.

On alternate weeks, the cruise will be in the reverse direction.

Wild Earth Travel

Small Ships, Big Adventures

0800 945 3327 (within New Zealand) | +64 (0) 3 365 1355 | **1800 107 715** (within Australia)

info@wildearth-travel.com | wildearth-travel.com

Wild Earth Travel

Small Ships, Big Adventures

wildearth-travel.com

info@wildearth-travel.com

YOUR SHIP: ANJODI

YOUR SHIP:	Anjodi
VESSEL TYPE:	Hotel Barge
LENGTH:	100 feet
PASSENGER CAPACITY:	8
BUILT/REFURBISHED:	

Anjodi is very much a hotel barge of the classic Dutch design and also the founding member of our fleet, embarking on her first cruises along the historic Canal du Midi over 40 years ago. Her beautiful interior makes the most of traditional materials such as African hardwoods and shining brass to create a warm onboard feel, reminiscent of a classic yacht.

The charming saloon is particularly welcoming, with its combination of richly coloured wooden flooring, elegant French dining furniture and comfortable banquette seating, as well as a fully stocked bar.

The four compact, cleverly-designed cabins, featuring hardwood panelling and brass portholes, offer a choice of twin or double bedded accommodation, each with en suite facilities.

The spacious sundeck is shaded by an adjustable canopy and there are comfortable sun loungers and a spa pool to soak in with a glass of chilled white wine.

Anjodi is a very well-known hotel barge having achieved 'film star' status some years ago following her many appearances in the television series Rick Stein's French Odyssey, when she carried the eponymous chef on a voyage of culinary discovery through Southern France. Why not follow in his footsteps with a

cruise along the Canal du Midi, a 330-year-old canal with UNESCO World Heritage status.



age status.

Wild Earth Travel

Small Ships, Big Adventures

0800 945 3327 (within New Zealand) | +64 (0) 3 365 1355 | **1800 107 715** (within Australia)

info@wildearth-travel.com | **wildearth-travel.com**

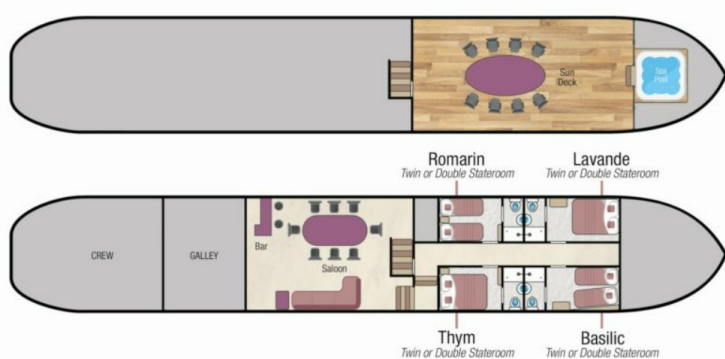
Wild Earth Travel

Small Ships, Big Adventures

wildearth-travel.com

info@wildearth-travel.com

INSIDE YOUR SHIP



Cabin



Wild Earth Travel

Small Ships, Big Adventures

0800 945 3327 (within New Zealand) | +64 (0) 3 365 1355 | 1800 107 715 (within Australia)

info@wildearth-travel.com | wildearth-travel.com



Wild Earth Travel

Small Ships, Big Adventures

wildearth-travel.com

info@wildearth-travel.com

PRICING

06-Jul-2025 to 12-Jul-2025

Cabin	6050 EUR pp
-------	-------------

06-Jul-2025 to 12-Jul-2025

Cabin	6050 EUR pp
-------	-------------

06-Jul-2025 to 12-Jul-2025

Cabin	7850 EUR pp
-------	-------------

13-Jul-2025 to 19-Jul-2025

Cabin	7850 EUR pp
-------	-------------

13-Jul-2025 to 19-Jul-2025

Cabin	6050 EUR pp
-------	-------------

13-Jul-2025 to 19-Jul-2025

Cabin	6050 EUR pp
-------	-------------

20-Jul-2025 to 26-Jul-2025

Cabin	5250 EUR pp
-------	-------------

20-Jul-2025 to 26-Jul-2025

Cabin	6050 EUR pp
-------	-------------

20-Jul-2025 to 26-Jul-2025

Cabin	6850 EUR pp
-------	-------------

27-Jul-2025 to 02-Aug-2025

Cabin	6050 EUR pp
-------	-------------

27-Jul-2025 to 02-Aug-2025

Cabin	6850 EUR pp
-------	-------------

27-Jul-2025 to 02-Aug-2025

Cabin	5250 EUR pp
-------	-------------

03-Aug-2025 to 09-Aug-2025

Cabin	6850 EUR pp
-------	-------------

03-Aug-2025 to 09-Aug-2025

Cabin	5250 EUR pp
-------	-------------

03-Aug-2025 to 09-Aug-2025

Cabin	6050 EUR pp
-------	-------------

10-Aug-2025 to 16-Aug-2025

Cabin	6050 EUR pp
-------	-------------

10-Aug-2025 to 16-Aug-2025

Cabin	6850 EUR pp
-------	-------------

10-Aug-2025 to 16-Aug-2025

Cabin	5250 EUR pp
-------	-------------

17-Aug-2025 to 23-Aug-2025

Cabin	5250 EUR pp
-------	-------------

17-Aug-2025 to 23-Aug-2025

Cabin	6850 EUR pp
-------	-------------

17-Aug-2025 to 23-Aug-2025

Cabin	6050 EUR pp
-------	-------------

24-Aug-2025 to 30-Aug-2025

Cabin	7850 EUR pp
-------	-------------



Wild Earth Travel
Small Ships, Big Adventures

0800 945 3327 (within New Zealand) | +64 (0) 3 365 1355 | 1800 107 715 (within Australia)

info@wildearth-travel.com | wildearth-travel.com

Wild Earth Travel

Small Ships, Big Adventures

wildearth-travel.com

info@wildearth-travel.com

24-Aug-2025 to 30-Aug-2025

Cabin	6050 EUR pp
-------	-------------

21-Sep-2025 to 27-Sep-2025

Cabin	6050 EUR pp
-------	-------------

24-Aug-2025 to 30-Aug-2025

Cabin	6050 EUR pp
-------	-------------

21-Sep-2025 to 27-Sep-2025

Cabin	6050 EUR pp
-------	-------------

31-Aug-2025 to 06-Sep-2025

Cabin	6050 EUR pp
-------	-------------

31-Aug-2025 to 06-Sep-2025

Cabin	6050 EUR pp
-------	-------------

31-Aug-2025 to 06-Sep-2025

Cabin	7850 EUR pp
-------	-------------

07-Sep-2025 to 13-Sep-2025

Cabin	6050 EUR pp
-------	-------------

07-Sep-2025 to 13-Sep-2025

Cabin	7850 EUR pp
-------	-------------

07-Sep-2025 to 13-Sep-2025

Cabin	6050 EUR pp
-------	-------------

14-Sep-2025 to 20-Sep-2025

Cabin	6050 EUR pp
-------	-------------

14-Sep-2025 to 20-Sep-2025

Cabin	6050 EUR pp
-------	-------------

14-Sep-2025 to 20-Sep-2025

Cabin	7850 EUR pp
-------	-------------

21-Sep-2025 to 27-Sep-2025

Cabin	7850 EUR pp
-------	-------------

Wild Earth Travel
Small Ships, Big Adventures

0800 945 3327 (within New Zealand) | +64 (0) 3 365 1355 | **1800 107 715** (within Australia)

info@wildearth-travel.com | **wildearth-travel.com**

Wild Earth Travel

Small Ships, Big Adventures

wildearth-travel.com

info@wildearth-travel.com

PRICING

28-Sep-2025 to 04-Oct-2025

Cabin	7850 EUR pp
-------	-------------

28-Sep-2025 to 04-Oct-2025

Cabin	6050 EUR pp
-------	-------------

28-Sep-2025 to 04-Oct-2025

Cabin	6050 EUR pp
-------	-------------

05-Oct-2025 to 11-Oct-2025

Cabin	6050 EUR pp
-------	-------------

05-Oct-2025 to 11-Oct-2025

Cabin	6050 EUR pp
-------	-------------

05-Oct-2025 to 11-Oct-2025

Cabin	7850 EUR pp
-------	-------------

12-Oct-2025 to 18-Oct-2025

Cabin	7850 EUR pp
-------	-------------

12-Oct-2025 to 18-Oct-2025

Cabin	6050 EUR pp
-------	-------------

12-Oct-2025 to 18-Oct-2025

Cabin	6050 EUR pp
-------	-------------

19-Oct-2025 to 25-Oct-2025

Cabin	6850 EUR pp
-------	-------------

19-Oct-2025 to 25-Oct-2025

Cabin	5250 EUR pp
-------	-------------

19-Oct-2025 to 25-Oct-2025

Cabin	5250 EUR pp
-------	-------------

26-Oct-2025 to 01-Nov-2025

Cabin	6850 EUR pp
-------	-------------

26-Oct-2025 to 01-Nov-2025

Cabin	5250 EUR pp
-------	-------------

26-Oct-2025 to 01-Nov-2025

Cabin	5250 EUR pp
-------	-------------

22-Mar-2026 to 28-Mar-2026

Cabin	6850 EUR pp
-------	-------------

29-Mar-2026 to 04-Apr-2026

Cabin	5250 EUR pp
-------	-------------

29-Mar-2026 to 04-Apr-2026

Cabin	5250 EUR pp
-------	-------------

29-Mar-2026 to 04-Apr-2026

Cabin	6850 EUR pp
-------	-------------

05-Apr-2026 to 11-Apr-2026

Cabin	5250 EUR pp
-------	-------------

05-Apr-2026 to 11-Apr-2026

Cabin	6850 EUR pp
-------	-------------

05-Apr-2026 to 11-Apr-2026

Cabin	5250 EUR pp
-------	-------------

Wild Earth Travel
Small Ships, Big Adventures

0800 945 3327 (within New Zealand) | +64 (0) 3 365 1355 | 1800 107 715 (within Australia)

info@wildearth-travel.com | wildearth-travel.com

Wild Earth Travel

Small Ships, Big Adventures

wildearth-travel.com

info@wildearth-travel.com

12-Apr-2026 to 18-Apr-2026

Cabin	5250 EUR pp
-------	-------------

10-May-2026 to 16-May-2026

Cabin	6050 EUR pp
-------	-------------

12-Apr-2026 to 18-Apr-2026

Cabin	6850 EUR pp
-------	-------------

10-May-2026 to 16-May-2026

Cabin	6050 EUR pp
-------	-------------

12-Apr-2026 to 18-Apr-2026

Cabin	5250 EUR pp
-------	-------------

19-Apr-2026 to 25-Apr-2026

Cabin	5250 EUR pp
-------	-------------

19-Apr-2026 to 25-Apr-2026

Cabin	6850 EUR pp
-------	-------------

19-Apr-2026 to 25-Apr-2026

Cabin	5250 EUR pp
-------	-------------

26-Apr-2026 to 02-May-2026

Cabin	7850 EUR pp
-------	-------------

26-Apr-2026 to 02-May-2026

Cabin	6050 EUR pp
-------	-------------

26-Apr-2026 to 02-May-2026

Cabin	6050 EUR pp
-------	-------------

03-May-2026 to 09-May-2026

Cabin	6050 EUR pp
-------	-------------

03-May-2026 to 09-May-2026

Cabin	7850 EUR pp
-------	-------------

03-May-2026 to 09-May-2026

Cabin	6050 EUR pp
-------	-------------

Wild Earth Travel
Small Ships, Big Adventures

0800 945 3327 (within New Zealand) | +64 (0) 3 365 1355 | **1800 107 715** (within Australia)

info@wildearth-travel.com | wildearth-travel.com



Wild Earth Travel

Small Ships, Big Adventures

wildearth-travel.com

info@wildearth-travel.com

PRICING

10-May-2026 to 16-May-2026

Cabin	7850 EUR pp
-------	-------------

17-May-2026 to 23-May-2026

Cabin	6050 EUR pp
-------	-------------

17-May-2026 to 23-May-2026

Cabin	6050 EUR pp
-------	-------------

17-May-2026 to 23-May-2026

Cabin	7850 EUR pp
-------	-------------

24-May-2026 to 30-May-2026

Cabin	6050 EUR pp
-------	-------------

24-May-2026 to 30-May-2026

Cabin	7850 EUR pp
-------	-------------

24-May-2026 to 30-May-2026

Cabin	6050 EUR pp
-------	-------------

31-May-2026 to 06-Jun-2026

Cabin	6050 EUR pp
-------	-------------

31-May-2026 to 06-Jun-2026

Cabin	7850 EUR pp
-------	-------------

31-May-2026 to 06-Jun-2026

Cabin	6050 EUR pp
-------	-------------

07-Jun-2026 to 13-Jun-2026

Cabin	7850 EUR pp
-------	-------------

07-Jun-2026 to 13-Jun-2026

Cabin	6050 EUR pp
-------	-------------

07-Jun-2026 to 13-Jun-2026

Cabin	6050 EUR pp
-------	-------------

14-Jun-2026 to 20-Jun-2026

Cabin	6050 EUR pp
-------	-------------

14-Jun-2026 to 20-Jun-2026

Cabin	6050 EUR pp
-------	-------------

14-Jun-2026 to 20-Jun-2026

Cabin	7850 EUR pp
-------	-------------

21-Jun-2026 to 27-Jun-2026

Cabin	6050 EUR pp
-------	-------------

21-Jun-2026 to 27-Jun-2026

Cabin	7850 EUR pp
-------	-------------

21-Jun-2026 to 27-Jun-2026

Cabin	6050 EUR pp
-------	-------------

28-Jun-2026 to 04-Jul-2026

Cabin	6050 EUR pp
-------	-------------

28-Jun-2026 to 04-Jul-2026

Cabin	7850 EUR pp
-------	-------------

28-Jun-2026 to 04-Jul-2026

Cabin	6050 EUR pp
-------	-------------



Wild Earth Travel
Small Ships, Big Adventures

0800 945 3327 (within New Zealand) | +64 (0) 3 365 1355 | **1800 107 715** (within Australia)

info@wildearth-travel.com | wildearth-travel.com

Wild Earth Travel

Small Ships, Big Adventures

wildearth-travel.com

info@wildearth-travel.com

05-Jul-2026 to 11-Jul-2026

Cabin	6050 EUR pp
-------	-------------

02-Aug-2026 to 08-Aug-2026

Cabin	6050 EUR pp
-------	-------------

05-Jul-2026 to 11-Jul-2026

Cabin	7850 EUR pp
-------	-------------

02-Aug-2026 to 08-Aug-2026

Cabin	5250 EUR pp
-------	-------------

05-Jul-2026 to 11-Jul-2026

Cabin	6050 EUR pp
-------	-------------

12-Jul-2026 to 18-Jul-2026

Cabin	6050 EUR pp
-------	-------------

12-Jul-2026 to 18-Jul-2026

Cabin	7850 EUR pp
-------	-------------

12-Jul-2026 to 18-Jul-2026

Cabin	6050 EUR pp
-------	-------------

19-Jul-2026 to 25-Jul-2026

Cabin	5250 EUR pp
-------	-------------

19-Jul-2026 to 25-Jul-2026

Cabin	6850 EUR pp
-------	-------------

19-Jul-2026 to 25-Jul-2026

Cabin	6050 EUR pp
-------	-------------

26-Jul-2026 to 01-Aug-2026

Cabin	6050 EUR pp
-------	-------------

26-Jul-2026 to 01-Aug-2026

Cabin	5250 EUR pp
-------	-------------

26-Jul-2026 to 01-Aug-2026

Cabin	6850 EUR pp
-------	-------------

Wild Earth Travel
Small Ships, Big Adventures

0800 945 3327 (within New Zealand) | +64 (0) 3 365 1355 | **1800 107 715** (within Australia)

info@wildearth-travel.com | wildearth-travel.com

Wild Earth Travel

Small Ships, Big Adventures

wildearth-travel.com

info@wildearth-travel.com

PRICING

02-Aug-2026 to 08-Aug-2026

Cabin	6850 EUR pp
-------	-------------

09-Aug-2026 to 15-Aug-2026

Cabin	6850 EUR pp
-------	-------------

09-Aug-2026 to 15-Aug-2026

Cabin	5250 EUR pp
-------	-------------

09-Aug-2026 to 15-Aug-2026

Cabin	6050 EUR pp
-------	-------------

16-Aug-2026 to 22-Aug-2026

Cabin	5250 EUR pp
-------	-------------

16-Aug-2026 to 22-Aug-2026

Cabin	6850 EUR pp
-------	-------------

16-Aug-2026 to 22-Aug-2026

Cabin	6050 EUR pp
-------	-------------

23-Aug-2026 to 29-Aug-2026

Cabin	7850 EUR pp
-------	-------------

23-Aug-2026 to 29-Aug-2026

Cabin	6050 EUR pp
-------	-------------

23-Aug-2026 to 29-Aug-2026

Cabin	6050 EUR pp
-------	-------------

30-Aug-2026 to 05-Sep-2026

Cabin	7850 EUR pp
-------	-------------

30-Aug-2026 to 05-Sep-2026

Cabin	6050 EUR pp
-------	-------------

30-Aug-2026 to 05-Sep-2026

Cabin	6050 EUR pp
-------	-------------

06-Sep-2026 to 12-Sep-2026

Cabin	6050 EUR pp
-------	-------------

06-Sep-2026 to 12-Sep-2026

Cabin	7850 EUR pp
-------	-------------

06-Sep-2026 to 12-Sep-2026

Cabin	6050 EUR pp
-------	-------------

13-Sep-2026 to 19-Sep-2026

Cabin	7850 EUR pp
-------	-------------

13-Sep-2026 to 19-Sep-2026

Cabin	6050 EUR pp
-------	-------------

13-Sep-2026 to 19-Sep-2026

Cabin	6050 EUR pp
-------	-------------

20-Sep-2026 to 26-Sep-2026

Cabin	6050 EUR pp
-------	-------------

20-Sep-2026 to 26-Sep-2026

Cabin	7850 EUR pp
-------	-------------

20-Sep-2026 to 26-Sep-2026

Cabin	6050 EUR pp
-------	-------------

Wild Earth Travel
Small Ships, Big Adventures

0800 945 3327 (within New Zealand) | +64 (0) 3 365 1355 | 1800 107 715 (within Australia)

info@wildearth-travel.com | wildearth-travel.com

Wild Earth Travel

Small Ships, Big Adventures

wildearth-travel.com

info@wildearth-travel.com

27-Sep-2026 to 03-Oct-2026

Cabin	7850 EUR pp
-------	-------------

25-Oct-2026 to 31-Oct-2026

Cabin	5250 EUR pp
-------	-------------

27-Sep-2026 to 03-Oct-2026

Cabin	6050 EUR pp
-------	-------------

25-Oct-2026 to 31-Oct-2026

Cabin	6850 EUR pp
-------	-------------

27-Sep-2026 to 03-Oct-2026

Cabin	6050 EUR pp
-------	-------------

04-Oct-2026 to 10-Oct-2026

Cabin	6050 EUR pp
-------	-------------

04-Oct-2026 to 10-Oct-2026

Cabin	7850 EUR pp
-------	-------------

04-Oct-2026 to 10-Oct-2026

Cabin	6050 EUR pp
-------	-------------

11-Oct-2026 to 17-Oct-2026

Cabin	6050 EUR pp
-------	-------------

11-Oct-2026 to 17-Oct-2026

Cabin	6050 EUR pp
-------	-------------

11-Oct-2026 to 17-Oct-2026

Cabin	7850 EUR pp
-------	-------------

18-Oct-2026 to 24-Oct-2026

Cabin	5250 EUR pp
-------	-------------

18-Oct-2026 to 24-Oct-2026

Cabin	6850 EUR pp
-------	-------------

18-Oct-2026 to 24-Oct-2026

Cabin	5250 EUR pp
-------	-------------

Wild Earth Travel
Small Ships, Big Adventures

0800 945 3327 (within New Zealand) | +64 (0) 3 365 1355 | **1800 107 715** (within Australia)

info@wildearth-travel.com | wildearth-travel.com



Wild Earth Travel

Small Ships, Big Adventures

wildearth-travel.com

info@wildearth-travel.com

PRICING

25-Oct-2026 to 31-Oct-2026

Cabin

5250 EUR pp

Wild Earth Travel

Small Ships, Big Adventures

0800 945 3327 (within New Zealand) | +64 (0) 3 365 1355 | **1800 107 715** (within Australia)

info@wildearth-travel.com | **wildearth-travel.com**