

# Wild Earth Travel

*Small Ships, Big Adventures*

**wildearth-travel.com**

**info@wildearth-travel.com**

## CIRCUMNAVIGATION OF JAPAN - A NEW UNDERSTANDING OF NIPPON

This 16-day cruise aboard the HANSEATIC inspiration circumnavigates Japan's four main islands, with a vibrant detour to South Korea, blending classic destinations and insider gems. Highlights include exploring ancient traditions alongside futuristic metropolises, experiencing South Korea's dynamic yet serene character, and enjoying active hikes across diverse landscapes. From tea houses to modern cities, the journey offers a fresh understanding of Nippon, with key stops in Busan, Jeju Island, Tokyo, and Yakushima, revealing uncharted cultural and natural treasures.



### ITINERARY

**Fri, 05.06.2026 Otaru (Sapporo)/Japan**

Departure 18.00 hrs

**Sat, 06.06.2026 Relaxation at sea**

**Sun, 07.06.2026 Wajima/Noto Peninsula/Japan**

From 7.00 to 14.00 hrs

True understanding unfolds only through experience. Your insightful journey around Japan with the HANSEATIC inspiration offers an especially deep understanding of the country. Starting along the rarely visited west coast of Honshu, you will explore fishing villages and rice fields near Wajima on the Noto Peninsula<sup>1</sup>. The town itself is renowned for its lacquerware.

**Mon, 08.06.2026 Oki Islands**

From 9.00 to 0.00 hrs

**Wild Earth Travel**

*Small Ships, Big Adventures*

**0800 945 3327** (within New Zealand) | +64 (0) 3 365 1355 | **1800 107 715** (within Australia)

info@wildearth-travel.com | **wildearth-travel.com**



# Wild Earth Travel

*Small Ships, Big Adventures*

**wildearth-travel.com**

**info@wildearth-travel.com**

Due to its unique geology and isolation, the Oki Islands have developed a distinctive ecosystem, characterised by red rock formations and verdant vegetation. Hiking along the Kuniga Coast\* offers you the opportunity to enjoy continually changing views of the Sea of Japan from the 257-meter-high Matengai Cliff. Alternatively, you can visit the Takuhi Shrine or learn more about the islands by taking a bus and boat tour.

**Tue, 09.06.2026 Sakaiminato**

From 7.00 to 17.00 hrs

Sakaiminato is renowned for the quirky bronze statues created by the locally born manga artist Mizuki Shigeru. The Daisen-Oki National Park could easily serve as inspiration for Japanese ink paintings, with features like the "twin" of Mount Fuji when hiking at Mount Daisen\*. The Izumo Taisha Shrine\* is considered one of the most significant Shinto sanctuaries, where newlyweds pray for a happy marriage and singles seek a partner.

**Wed, 10.06.2026 Busan/South Korea**

From 12.00 to 19.00 hrs

Mysterious, otherworldly, and unknown: in South Korea, you enter a captivating realm. Discover Busan with a tour of the Haedong Yonggungsa Temple. Korea's deep connection to nature is revealed on a coastal hike through Igidae Park, featuring its quaint suspension bridges. Quench your thirst for new experiences with a traditional Korean tea ceremony.

**Thu, 11.06.2026 Jeju Island**

From 9.00 to 15.00 hrs

Pure nature: The UNESCO World Heritage landscape of Jeju Island, with its volcanic peak and lava tunnels, is best explored on an island tour or with a walk to the rim of the Sangumburi Crater.

**Fri, 12.06.2026 Nagasaki/Japan**

From 8.00 to 17.30 hrs

Back in Japan on the southernmost main island of Kyushu, Nagasaki narrates its poignant history. The events of 1945 are not the only focus here - you will also find Japan's oldest stone bridge and its oldest Christian church.

**Sat, 13.06.2026 Yakushima**

From 7.00 to 19.00 hrs

In southwestern Japan, the Nansei Islands stretch over 1,000 km, often referred to as the "Japanese South Seas." Yakushima showcases its lush tropical landscape and ancient cedar forests on a hike, accompanied by the sounds of numerous bird species and macaques. When mist drifts over rhododendrons, mosses, and lichens, the rainforest reveals its particularly mystical charm.

**Sun, 14.06.2026 Uwajima**

From 13.00 to 19.00 hrs

Great natural wonders and cultural treasures also define Shikoku, the smallest of Japan's main islands. Surrounded by mountain ranges, the coastal city of Uwajima transports you back to the Edo period with its historic castle. Following in the footsteps of the once-powerful Date family, you can delve deeper into the cultural heritage of Uwajima. Gain insights into the tradition of the terraced fields of Yusu - the only way to practice agriculture in the mountainous region. Alternatively, take a journey back in time by visiting the old town of Uchiko, which was the center of wax and candle production in the 20th century.

**Mon, 15.06.2026 Relaxation at sea**

**Tue, 16.06.2026 Shimizu**

From 7.00 to 19.00 hrs

Wild Earth Travel

*Small Ships, Big Adventures*

**0800 945 3327** (within New Zealand) | +64 (0) 3 365 1355 | **1800 107 715** (within Australia)

info@wildearth-travel.com | wildearth-travel.com



From Shimizu, uncover the secret of green tea. Equally iconic and steeped in stories is Japan's most famous landmark - Mount Fuji. Will the weather reveal its majestic 3,776-metre high snow-capped peak to you?

Arrival 7.00 hrs

Please note:

Wed, 17.06.2026 Tokyo

From 7.00 to 23.00 hrs

Reaching towards the sky are the structures of the megacity Tokyo. A city of contrasts, it features the Imperial Palace, quaint temples, intricate shrines, and bustling markets. Stroll through Japanese gardens and immerse yourself in the art\*. Ascend to new heights with a visit to Japan's tallest tower - the Tokyo Skytree.

Itineraries are subject to change. The shore activities are not included in the cruise price and are in the planning stage. Subject to change without notice.

Thu, 18.06.2026 Relaxation at sea

Fri, 19.06.2026 Miyako

From 7.00 to 18.00 hrs

The extraordinary capabilities of nature are on full display near Miyako at the Sanriku Fukko National Park, with its remarkable flora and fauna. Your day's motto: Actively discover Japan - through a coastal hike along rugged cliffs, exploring the Ryusendo limestone cave, or by boat along the impressive Kitayamazaki cliff coast.

Sat, 20.06.2026 Okushiri

From 13.30 to 19.00 hrs

Off the coast of Japan's northernmost main island, Hokkaido, you will reach the rugged, small rocky island of Okushiri, known for its abalone and sea urchins. Should the authorities give the green light, you will explore the island's natural beauty with your expert guides. In good weather, the Zodiacs will also come into play. And then it is completed: the circumnavigation of Japan. Driven by curiosity and a pioneering spirit, this journey rewards you with a trove of Far Eastern experiences that are truly unique.

Sun, 21.06.2026 Otaru (Sapporo)/Japan





# Wild Earth Travel

*Small Ships, Big Adventures*

**wildearth-travel.com**

**info@wildearth-travel.com**

## YOUR SHIP: HANSEATIC INSPIRATION/NATURE/SPIRIT

<b>YOUR SHIP:</b>	<b>Hanseatic</b>
	<b>Inspiration/Nature/Spirit</b>
<b>VESSEL TYPE:</b>	<b>Expedition</b>
<b>LENGTH:</b>	<b>138 m</b>
<b>PASSENGER CAPACITY:</b>	<b>230</b>
<b>BUILT/REFURBISHED:</b>	<b>2021</b>

The HANSEATIC inspiration, a small, state-of-the-art expedition ship with a maximum of 230 guests, offers a perfect blend of adventure and comfort for explorers seeking to uncover the world's wonders. As an international vessel conducting cruises in both English and German, it brings over 30 years of expertise from a market leader in German-speaking countries to every journey. Each expedition is a masterpiece, passionately crafted to reveal far-flung worlds--be it icy realms, tropical paradises, wildlife havens, or cultural gems--making every voyage a unique discovery aboard this exceptional ship.

Features of all cabins and suites

An ocean view with even more: exclusively outside cabins and suites, almost all with balconies or French balconies

Spaciously designed - enjoy a relaxing stay in rooms from 21 m<sup>2</sup>/226 ft<sup>2</sup> up to 71 m<sup>2</sup>/764 ft<sup>2</sup> in size

Exceptionally equipped - for example, with binoculars, Nordic Walking poles, air conditioning, coffee machine and mini bar (free of charge) and 24-hour cabin service

Separable beds

Rain shower and heated wall in bathroom (e.g. for towels and

wet parkas)

Extensive infotainment with live broadcast and recordings of expert presentations, forwardview camera, navigation chart, films and much more

Restaurants

Aboard the HANSEATIC inspiration, a new kind of freedom blends adventure and pleasure with a culinary journey across three exceptional restaurants. The spacious HANSEATIC Restaurant offers flexible mealtimes and a free choice of seating, serving a daily-changing menu of global flavors inspired by local specialties, paired with fine wines and supported by attentive 24-hour cabin service. At the Lido Restaurant, guests can savor breakfast under the open sky or enjoy a perfectly grilled steak from the outdoor barbecue, complete with panoramic views and an open show kitchen. The specialty restaurant Nikkei fuses fine Japanese creations with modern Peruvian cuisine, delivering a unique dining experience that elevates exploration to new heights--all while bars in the Observation Lounge and HanseAtrium offer favorite drinks against stunning backdrops, from Nordic fjords to icy Antarctic vistas.

Fitness and Wellness

On the HANSEATIC inspiration, an extraordinary time out awaits after thrilling Zodiac rides, challenging hikes, or Arctic adventures. Unwind in the Ocean Spa, where a Finnish sauna with stunning ocean views, a gentle steam sauna, an ice fountain, and a relaxation room rejuvenate your senses, complemented by professional massages, cosmetic treatments, and eco-friendly products made from natural, vegan ingredients.

Wild Earth Travel

*Small Ships, Big Adventures*

**0800 945 3327** (within New Zealand) | +64 (0) 3 365 1355 | **1800 107 715** (within Australia)

info@wildearth-travel.com | **wildearth-travel.com**



Stay active in the 100 m<sup>2</sup> fitness room or separate course room--both with ocean vistas--guided by a fitness coach offering personalized advice and a variety of courses, either indoors or on deck. The pool area, with its flexible canopy, invites relaxation year-round, featuring water loungers, a whirlpool, and a bar, ensuring a perfect blend of indulgence and revitalization against the backdrop of the open sea.

#### Knowledge

Shore excursions and Zodiac rides come alive with deeper context through fascinating presentations in the HanseAtrium, a high-tech lounge where experts share daily precaps and recaps, doubling as an atmospheric evening bar for films and discussions. The Ocean Academy enhances the journey with a Study Wall and interactive poster of scientific insights, microscopes for exploring hidden wonders alongside experts, and Study Seats--with swivel touchscreens--for personal dives into science. Supported by travel diaries and destination videos, this immersive experience broadens horizons with cutting-edge tools and expertise.



expertise.



# Wild Earth Travel

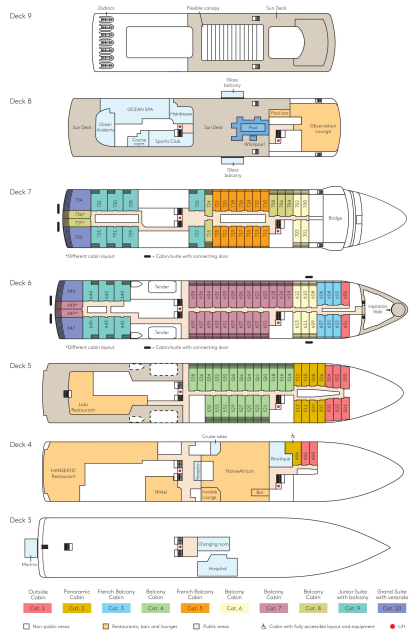
*Small Ships, Big Adventures*

[wildearth-travel.com](http://wildearth-travel.com)

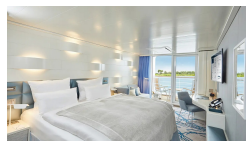
[info@wildearth-travel.com](mailto:info@wildearth-travel.com)

## INSIDE YOUR SHIP

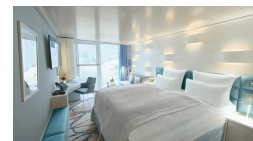
Deck plan HANSEATIC Inspiration



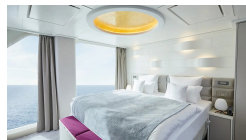
Balcony Cabin



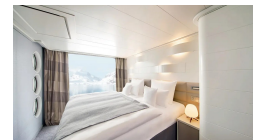
French Balcony Cabin



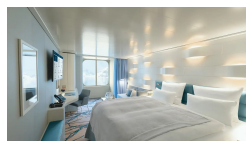
Grand Suite



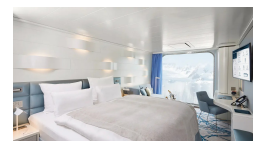
Junior Suite



Outside Cabin



Panoramic Cabin



Wild Earth Travel

*Small Ships, Big Adventures*

0800 945 3327 (within New Zealand) | +64 (0) 3 365 1355 | 1800 107 715 (within Australia)

[info@wildearth-travel.com](mailto:info@wildearth-travel.com) | [wildearth-travel.com](http://wildearth-travel.com)



# Wild Earth Travel

*Small Ships, Big Adventures*

**wildearth-travel.com**

**info@wildearth-travel.com**

## PRICING

05-Jun-2026 to 21-Jun-2026

Outside Cabin	11590 EUR pp
Panoramic Cabin	11590 EUR pp
French Balcony Cabin	14200 EUR pp
Balcony Cabin	15420 EUR pp
Junior Suite	0 pp
Grand Suite	0 pp

Wild Earth Travel

*Small Ships, Big Adventures*

**0800 945 3327** (within New Zealand) | +64 (0) 3 365 1355 | **1800 107 715** (within Australia)

info@wildearth-travel.com | **wildearth-travel.com**