

# Wild Earth Travel

*Small Ships, Big Adventures*

**wildearth-travel.com**

**info@wildearth-travel.com**

## CHILEAN FJORDS — DISCOVERING THE HEART OF PATAGONIA SMALL SHIP CRUISE

### On expedition in Patagonia

Setting sail from the UNESCO hilltop gem of Valparaíso, we sail south to picturesque Niebla and charming Castro. Continuing along the west coast to Patagonia, you'll discover breathtaking panoramic scenery and be welcomed by remote communities to learn how they live. At Puerto Natales, you can choose to visit the world-renowned Torres del Paine National Park with its towering granite mountains.

### Fjords, glaciers and the fabled Cape Horn

Sailing into the awe-inspiring Chilean fjords, we encounter a rugged, maze-like coastline with a multitude of islands, steep mountains and glittering glaciers. This is the perfect region to explore expedition-style, and we'll do just that. We'll attempt a landing at the legendary Cape Horn, before winding our way through fabled waterways toward our adventure's end in Ushuaia, the southernmost city in the world.



### ITINERARY

#### DAY 1 Valparaíso, a UNESCO gem

Begin your adventure in this vibrant hilltop city

Your expedition ship awaits you in Valparaíso, the 'Jewel of the Pacific'. Built on steep hillsides overlooking the ocean, it's well worth spending time in this UNESCO-listed city.

Wild Earth Travel

*Small Ships, Big Adventures*

**0800 945 3327** (within New Zealand) | +64 (0) 3 365 1355 | **1800 107 715** (within Australia)

info@wildearth-travel.com | **wildearth-travel.com**



# Wild Earth Travel

*Small Ships, Big Adventures*

**wildearth-travel.com**

**info@wildearth-travel.com**

Filled with attractions, the city is an exhilarating maze of winding alleyways, colourful houses, and mercados packed with local produce. Why not take it all in on a funicular ride up to Cerro Alegre and Concepcion.

If you'd like to explore more of Valparaiso, you can join one of our optional Pre-Programmes.

After picking up your expedition jacket and meeting your Expedition Team, find your cabin and explore the ship, before enjoying the first of many delicious meals on board as we set sail.

## DAY 2 Wildlife spotting at sea

Sail south along the Peruvian trench

Prepare for the adventures ahead as we spend a day at sea, cruising south. Take the opportunity to get to know your ship better, perhaps trying out some of its facilities such as the hot tubs or sauna. There will also be lectures to attend and new friends to be made.

Our journey takes us through the rich waters of the Humboldt Current as we pass over the Peruvian trench - a tectonically active, 5,000-foot-deep gouge in the seafloor. The deep water and swift-moving currents bring a variety of wildlife to the area. Your Expedition Team will tell you more about the Humboldt Current's importance to the marine ecosystem, and help you spot birdlife like Peruvian Boobies, Brown Boobies, and various species of whales.

## DAY 3 The fortress at Niebla

Explore Spanish fortresses and lively markets

We go ashore at the pretty seaside town of Niebla, set on a picturesque peninsula with views of Corral Bay on one side and the Valdivia River on the other. Take a stroll on the wide sandy beach and, if the Feria Costumbrista market is on, you may want to sample some traditional snacks, such as empanadas, anticuchos and churros.

Aside from the town itself, the ruins of the old Spanish fort and its associated museum are well worth a visit. Learn more about the region's history here, then wander around the lighthouse. You'll enjoy beautiful views across the river and bay.

## DAY 4 Castro's Chilotan charm

Stilt houses and historic churches

Set amidst the lush greenery of Chilo Island, Castro is Chile's third oldest city. It's also home to two UNESCO World Heritage Sites - Iglesia San Francisco and Iglesia de Nuestra Señora de Gracia de Nercon. The former is one of the oldest colonial era buildings in the country and has survived 15 major earthquakes.

Keep your camera ready for views of the city's colourful palafitos - stilt houses along the waterfront. For an insight into local history and culture, head to the Museo Regional de Castro and the Modern Art Museum.

## DAY 5 The waters of Patagonia

Witness unforgettable seascapes

Your expedition cruise continues south through the waters of Patagonia. The seas here are captivating, with a whole palette of shades of blue, from the brightest aquamarine to the deepest midnight hues.

As we sail, there's a good chance you'll see whales, seabirds, seals and more. Take in the scenery from the panoramic sauna or on-deck hot tubs and infinity pool, or just enjoy the onboard cuisine, before relaxing in the Explorer Lounge & Bar.

Your Expedition Team will be on hand with fascinating lectures on a range of topics, and our onboard photographer can help with tips on expedition photography.

## DAY 6 Charm of Caleta Tortel

**Wild Earth Travel**

*Small Ships, Big Adventures*

**0800 945 3327** (within New Zealand) | +64 (0) 3 365 1355 | **1800 107 715** (within Australia)

info@wildearth-travel.com | **wildearth-travel.com**





# Wild Earth Travel

*Small Ships, Big Adventures*

**wildearth-travel.com**

**info@wildearth-travel.com**

## DAY 9 Bohemian Puerto Natales

Receive a warm welcome in Caleta Tortel

We continue off the well-trodden path to visit isolated Caleta Tortel. Lying at the mouth of Rio Baker, Chile's largest river, this charming village is home to around 500 inhabitants.

Instead of streets, a maze of boardwalks connects the close-knit community, spreading over the water and around the mountain base. If conditions permit, you'll be able to investigate the milky blue waters here by kayak.

While exploring the village, you'll come across locals selling handicrafts and you may even be treated to a performance by folk dancers.

## DAY 7-8 Exploration days

Explore the Patagonian fjords and cross the White Narrows

We'll spend the next two days sailing through the maze of the Chilean fjords. Tidal conditions allowing, we hope to visit Puerto Eden, an enchanting village only accessible by sea. The 250-strong community here are some of the last remaining members of the Indigenous Kawesqar people, offering a fascinating insight into Patagonian culture.

Alternatively, we'll spend the day cruising the majestic fjords, drinking in the incredible scenery and spotting wildlife along the way. We may take the opportunity to launch our small expedition boats and explore even closer. Be ready for spontaneous adventures!

The next day, according to the tide, we'll sail through the White Narrows into Puerto Natales. At less than 330 feet wide in parts, this striking waterway between islets and sheer rock cliffs is only passable in slack water and daylight.

Head out on deck to witness some of the most beautiful landscapes on the continent as your Captain skilfully navigates the ship through these famed channels.

Enter the gateway to Torres del Paine

Today you'll awake in Puerto Natales, gateway to the Torres del Paine National Park. The rugged landscape features steppe, forest and desert, punctuated by glaciers and lakes, and you can choose to see it either on a panoramic bus or hiking tour.

Andean animals such as guanacos, rheas and the elusive puma roam here. Look out for Chilean Flamingos as well as the mighty Andean Condor.

Puerto Natales is a popular hub for hikers and adventurers, with many eateries, bars and outdoor shops. Visit the artisan village at Etherh Aike or stroll along the photogenic waterfront.

## DAY 10-11 Stunning Chilean fjords

Sail through the Magellan Strait

We'll depart Puerto Natales as the tides and currents allow, sailing through the White Narrows again. Once through, we'll cruise deep into the heart of the Chilean fjords, surrounded by panoramic views, as we head towards Garibaldi Fjord.

Sailing south along the Chilean coast, join your Expedition Team for fascinating lectures on topics that might include pre-Columbian history, the geology of our surroundings and the folklore of local communities.

Enjoy the serenity and beauty of the maze of fjords we pass, surrounded by islands, glaciers and steep mountains. And keep an eye out for elephant seals, dolphins and whales, who often swim alongside the ship.

Our resident photographer will be on hand to help you get the most from your wildlife and landscape photography.

## DAY 12 Garibaldi Fjord

**Wild Earth Travel**

*Small Ships, Big Adventures*

**0800 945 3327** (within New Zealand) | +64 (0) 3 365 1355 | **1800 107 715** (within Australia)

info@wildearth-travel.com | **wildearth-travel.com**



# Wild Earth Travel

*Small Ships, Big Adventures*

**wildearth-travel.com**

**info@wildearth-travel.com**

See one of Chile's most impressive glaciers

The goal for the day is a scenic cruise within Garibaldi Fjord in Alberto de Agostini National Park, all the way up to Garibaldi Glacier. Here, the Andes tumble into the Pacific and great glaciers calve ice into the beautiful fjords.

The area is also a UNESCO Biosphere Reserve, and its rich waters are home to seals, sea lions and many seabirds, including the impressive Andean Condor.

If conditions allow, we'll reach the Garibaldi Glacier at the head of the fjord, one of the most impressive glaciers in all of Chile.

## DAY 13 Peaceful Puerto Williams

Visit a remote paradise

Soak up the peaceful atmosphere of Puerto Williams, another contender for the world's southernmost city. Drop into the Martin Gusinde Anthropological Museum where you'll find Indigenous Yaghan artifacts, maps, photographs and a traditional canoe. You can also see a replica of the bow of the *Yelcho* - the ship that rescued Shackleton's men in 1916.

Hike through the gorgeous scenery, on your own or as part of a guided excursion. You may be able to kayak if the weather allows, and keen birdwatchers should have their binoculars handy to spot seabirds, including the mighty albatross.

## DAY 14 Rounding Cape Horn

Round Cape Horn and cruise the Beagle Channel

Today we cruise through the Beagle Channel and sail down to the southernmost tip of South America - Cape Horn. The rocky walls of the channel plunge straight into the deep blue icy waters of this wild and remote seascape.

Watch out for rare, endemic Peale's dolphins and other wildlife here.

Cape Horn is where the open waters of the Atlantic and Pacific collide, creating powerful, swirling waves. Rounding the cape would once strike fear into the heart of hardened sailors. But with the benefit of our modern instruments, we'll attempt to safely land on and explore the cape ... if the conditions cooperate, of course.

Your expedition cruise continues through fabled waterways toward Ushuaia, our final stop.

## DAY 15 Ushuaia and Buenos Aires

Enjoy your final stop before heading off to the city of the tango

Your expedition cruise to Patagonia and the Chilean fjords comes to an end in Ushuaia, the capital of Argentina's Tierra del Fuego Province. Set against the magnificent backdrop of the Martial Glacier, Ushuaia vies for the title of the world's southernmost city.

From here, you'll take a flight back to Buenos Aires, but it doesn't have to be the end of your journey. If you have time before your onward journey join our optional Post-Programme to enjoy even more adventure.

### Please note:

Itineraries are subject to change.





# Wild Earth Travel

*Small Ships, Big Adventures*

**wildearth-travel.com**

**info@wildearth-travel.com**

## YOUR SHIP: FRIDTJOF NANSEN

<b>YOUR SHIP:</b>	<b>Fridtjof Nansen</b>
<b>VESSEL TYPE:</b>	<b>Expedition</b>
<b>LENGTH:</b>	<b>140 m</b>
<b>PASSENGER CAPACITY:</b>	<b>530</b>
<b>BUILT/REFURBISHED:</b>	<b>2020</b>

MS Fridtjof Nansen is the latest addition to Hurtigruten's fleet of custom built ships - and the next generation expedition ship. She will explore some of the most spectacular corners of the globe. Featuring Hurtigruten's revolutionary battery hybrid powered propulsion system, MS Fridtjof Nansen will be a near identical twin to her sister ship MS Roald Amundsen. Combining state of the art technology and premium on board experience with Hurtigruten's 125 years of experience and unparalleled destinations, the two Norwegian built ships introduces the next generation of adventure travel.

### Cabins and public areas

The stunning scenery will be reflected in a rich and comfortable interior design. Scandinavian materials from nature, such as granite, oak, birch and wool will be used to create relaxed and stylish cabins and public areas. All cabins are outside, 50 % will have private balconies, aft suites will feature private outdoor hot tubs with spectacular views.

### Science Center

The core of the onboard experience is the Nansen Science Center, an edutainment venue to guests and crew meet to create a deeper understanding of the areas we explore. Nansen

Science Center will also be the on board HQ for the Expedition Team.

### Restaurants

MS Fridtjof Nansen's three restaurants will host a variety of dining options, with menus drawn from our rich Norwegian and Nordic tradition, as well as international cuisine and local inspiration. Whether enjoying your meal at Aune Main Dining, Fredheim - the informal international meeting place, or the specialty restaurant Lindstrøm, you will indulge in low key yet refined, modern Norwegian Nordic cooking - where our honest and delicious cuisine reflects our destinations.

After a day of exploring new destinations, guests can relax and rejuvenate in the elegant Explorer Lounge, a large gym and Wellness center, or enjoy the scenery and sunsets on the massive in- and outdoor Observation Decks with the aft infinity pool and hot tubs as one of the highlights.

### Everything you need for an expedition cruise

Each expedition voyage is accompanied by a hand-picked team of specialists and modern-day explorers. Highly experienced, passionate and knowledgeable, the Expedition Team will be your guides and guardians on your voyage of exploration, instructing you on safety, sustainability and science. MS Fridtjof Nansen will feature a variety of custom built expedition equipment, including kayaks, a fleet of Blueeye underwater drones and Expedition Boats for safe landings in remote areas.

### In the footsteps of a great explorer

The newest addition to our fleet will honor the heritage of her namesake - the Norwegian explorer, scientist, humanitarian and Nobel Peace Prize laureate Fridtjof Nansen. Known for his



Wild Earth Travel  
*Small Ships, Big Adventures*

**0800 945 3327** (within New Zealand) | +64 (0) 3 365 1355 | **1800 107 715** (within Australia)

info@wildearth-travel.com | **wildearth-travel.com**



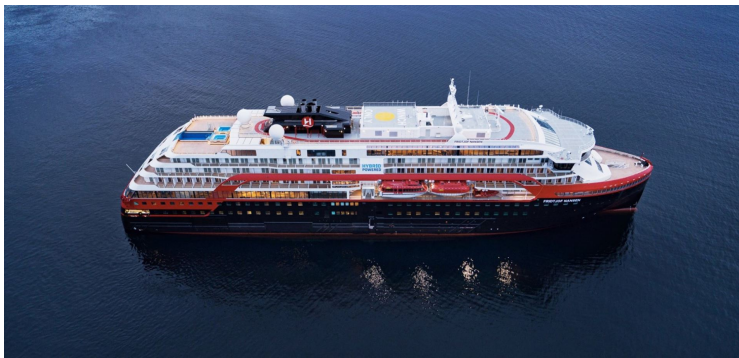
# Wild Earth Travel

*Small Ships, Big Adventures*

**wildearth-travel.com**

**info@wildearth-travel.com**

innovations in Arctic expeditions, Nansen led the first crossing of Greenland on cross-country skis. He is perhaps most famous for his attempt to reach the geographical North Pole during the Fram Expedition (1893-1896). Interestingly, after Nansen's Fram expedition, the ship was passed on to another great explorer who secretly planned an expedition to the South Pole - Roald Amundsen.



d Amundsen.

**Wild Earth Travel**

*Small Ships, Big Adventures*

**0800 945 3327** (within New Zealand) | +64 (0) 3 365 1355 | **1800 107 715** (within Australia)

info@wildearth-travel.com | **wildearth-travel.com**



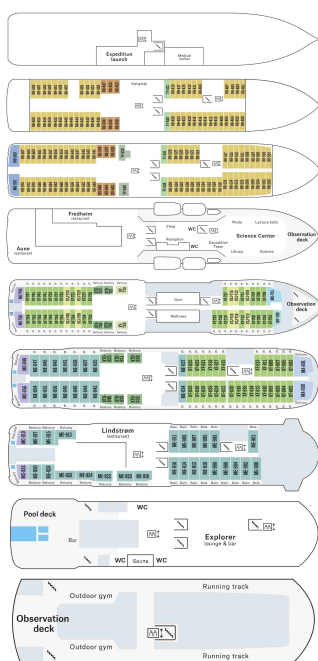
# Wild Earth Travel

*Small Ships, Big Adventures*

[wildearth-travel.com](http://wildearth-travel.com)

[info@wildearth-travel.com](mailto:info@wildearth-travel.com)

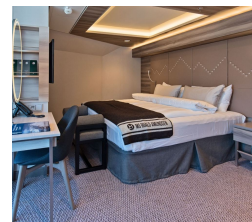
## INSIDE YOUR SHIP



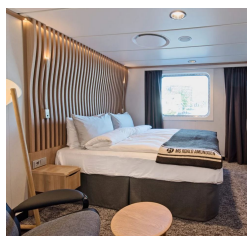
Arctic Superior. From



Expedition Suite. From



Polar Outside. From



Wild Earth Travel

*Small Ships, Big Adventures*

0800 945 3327 (within New Zealand) | +64 (0) 3 365 1355 | 1800 107 715 (within Australia)

[info@wildearth-travel.com](mailto:info@wildearth-travel.com) | [wildearth-travel.com](http://wildearth-travel.com)



# Wild Earth Travel

*Small Ships, Big Adventures*

**wildearth-travel.com**

**info@wildearth-travel.com**

## PRICING

### 17-Oct-2025 to 31-Oct-2025

Polar Outside. From	11817 AUD pp
Arctic Superior. From	13007 AUD pp
Expedition Suite. From	16357 AUD pp
Corner suite	18650 AUD pp

### 17-Oct-2026 to 31-Oct-2026

Polar Outside. From	12711 AUD pp
Arctic Superior. From	13991 AUD pp
Expedition Suite. From	17598 AUD pp

**Wild Earth Travel**  
*Small Ships, Big Adventures*

**0800 945 3327** (within New Zealand) | +64 (0) 3 365 1355 | **1800 107 715** (within Australia)

info@wildearth-travel.com | **wildearth-travel.com**