



Wild Earth Travel

Small Ships, Big Adventures

wildearth-travel.com

info@wildearth-travel.com

CHERRY BLOSSOMS OF JAPAN CRUISE: A 12-DAY SPRING VOYAGE FROM TOKYO TO OSAKA, INCLUDING BUSAN, SOUTH KOREA

Heritage Expeditions' Cherry Blossoms of Japan Cruise has been carefully curated to celebrate Japan's iconic Sakura/Cherry Blossom Season and Hanami Parties as we sail from Tokyo to Osaka on this 12-day all-inclusive, small-ship expedition cruise.

Combining a thrilling mix of Japan's ancient culture, rich history and incomparable natural world, with a focus on Japan's cherry blossoms, our authentic expedition cruise will see us exploring castles, serenely beautiful gardens and opulent temples and shrines combined with witnessing some of Japan's stunning natural landscapes, wonders and enjoying world-famous cuisine and sake.

Setting sail from Tokyo, Japan's neon-lit and frenetic capital, our Cherry Blossoms of Japan Cruise will explore some of Japan's iconic highlights alongside lesser-known and rarely visited coastlines, accessible only by expedition ship, from Honshu to Shikoku, Kyushu and across to South Korea's counterculture capital Busan.

Cruise the Seto Inland Sea and visit Japan's renowned art island Naoshima, historic Hiroshima and its Peace Memorial Park and eternal Flame of Peace, marvel at Miyajima's famed floating Torii Gate and observe and photograph the iconic sight of towering Mount Fuji framed by cherry blossoms.

In Kochi explore 8th Century Chikurin-ji Temple with its five-storied pagoda and stunning gardens; discover Fukuoka's trendy yatai food stalls, vibrant art installations, historic ruins

Wild Earth Travel

Small Ships, Big Adventures

0800 945 3327 (within New Zealand) | +64 (0) 3 365 1355 | **1800 107 715** (within Australia)

info@wildearth-travel.com | **wildearth-travel.com**

Wild Earth Travel

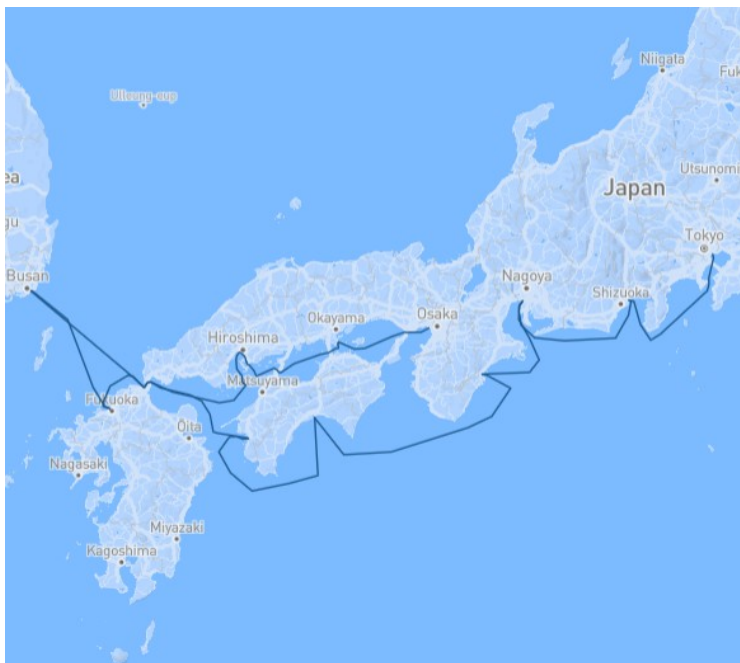
Small Ships, Big Adventures

wildearth-travel.com

info@wildearth-travel.com

and colourful coastal parks; and one of Japan's most famed gardens the 28-acre formal 17th Century Koraku-en garden at Tamano. We'll also moor at Uwajima, one of Japan's premier pearl producers with the opportunity to visit one of the city's traditional pearl farms, explore Owase's Edo-period village, Nagoya's eclectic culture and history, and much more.

Further enhancing our voyage, on board expert guest speakers and Japanese guides, as well as local, on the ground guides, will share Japan's ancient history, customs and traditions of this captivating country as our adventure unfolds.



re unfolds.

ITINERARY

Day 1 - Tokyo

Arrive at Japan's famed neon-lit capital Tokyo, where tradition meets ultramodern and towering skyscrapers sit alongside ancient temples, and make your way to the hotel where our group will spend the first night of the expedition. This evening meet your fellow voyagers and expedition guides over dinner at the hotel.

Day 2 - Tokyo/Shizuoka

Enjoy breakfast at the hotel before exploring the world's most populous city as we celebrate cherry blossom season at some of the capital's most iconic destinations. This afternoon we will make our way to the Port of Tokyo, where your Captain and Expedition Team will welcome you aboard Heritage Adventurer. This evening, join the expedition team in the Observation Lounge or up on the Observation Deck as we set sail for Shizuoka.

Day 3 - Shizuoka/Mt Fuji

This morning we sail into the Port of Shimizu, widely considered one of Japan's most beautiful ports with sweeping views of Mount Fuji dominating the skyline. Home to Japan's greatest Shogun Tokugawa Ieyasu and Japan's famed green tea heartland, Shizuoka has much to explore and experience. Options today could include a visit to Fujisan Sengen Shrine at the foothills of Mount Fuji and home to around 500 cherry blossom trees, Shimizu Funakoshi-zutsumi Park where 850 cherry blossom trees in bloom frame views of Mount Fuji, Obuchi Sasaba Tea Fields and their panoramic views of Mount Fuji and lush tea plantations. At Shiraito Falls, discover one of the most beautiful waterfalls in Japan, this 150-metre wide 20-metre high cascade was named after its resemblance to hanging threads of silk. Other options could include a visit to Mount Fuji World Heritage Center, a museum dedicated to Japan's famous landmark, remote Kotokuji Temple surrounded by cherry blossom trees and offering stunning views of Mount Fuji surrounded by cherry blossoms, or stretch your legs at Japan's first toll tunnel Meiji Utsunoya Tunnel, opened in 1876 under Utsunoya Pass to connect eastern Japan with the imperial capital of Kyoto.

Day 4 - Nagoya

Wild Earth Travel

Small Ships, Big Adventures

0800 945 3327 (within New Zealand) | +64 (0) 3 365 1355 | **1800 107 715** (within Australia)

info@wildearth-travel.com | wildearth-travel.com



Wild Earth Travel

Small Ships, Big Adventures

wildearth-travel.com

info@wildearth-travel.com

Famous for its castles, cars, and culinary delights, Nagoya is home to a vibrant culture and Japan's fourth most populated city. Regarded as the nation's leader in automotive, machine tooling, robotics, fine ceramics and aerospace industry, it is also Japan's industrial powerhouse. Nagoya is home to cherry blossom hot spots Inuyama Castle, one of Japan's 12 original castles and designated National Treasure; the Shikinomichi 'Path of Four Seasons', where hundreds of cherry trees line the Yamazaki River for almost a kilometre; 1,400 trees lining the banks of the Gojogawa River creating a pink arch during Iwakura Cherry Blossom Festival; and Tsuruma Park, a popular spot for cherry blossom viewing parties under the trees. Other destinations of interest include the Toyota Commemorative Museum of Industry and Technology which pays tribute to the iconic badge which helped shape Japan, Atsuta Jingu Shrine, one of Japan's greatest centres of worship since ancient times and home of sacred sword Kusanagi-no-tsuriugi, one of the three sacred treasures that symbolise the Imperial Throne.

Day 5 - Owase

The coastal city of Owase, famous for its seafood and walking trails, is a lively Edo-period town and former post station (rest stop with accommodation, shopping and dining for travellers) on one of ancient Japan's traditional travel routes. Our time here can be spent exploring the village and its local delicacies; Owase Shrine which is home to an ancient pair of Camphor trees, one of which is over 1,000 years old, and Tanemaki Gonbei-no-Sato garden. The latter, built in honour of the folk song legend, features Gonbei House exhibiting folklore materials and magnificent Japanese gardens featuring colourful Kawazu and Somei Yoshino cherry blossoms.

Day 6 - Kochi

Perched on the Pacific Ocean coastline, Kochi combines a variety of natural attractions and outdoor activities with a unique culture and historical towns featuring castles, ancient sake breweries and traditional markets. A national surfing hot spot, Kochi's rugged coast has earned it UNESCO Global Geopark status while cherry blossoms abound at Kochi Castle, Mount Soda, Nishigawa Flower Park, and Nyuta. Our explorations here could include 8th Century Chikurin-ji Temple with its five-storied pagoda and stunning gardens registered as a National Place of Scenic Beauty, and Kochi Prefectural Makino Botanical Garden honouring the life's work of botanist Dr. Tomitaro Makino, the father of Japanese botany. It features more than 3,000 plant and tree species including

40 different species of cherry blossoms. While Ryugado 'Dragon River' Cave, one of Japan's three largest limestone caves, was formed over the course of 175 million years and features an 11-metre waterfall inside.

Day 7 - Uwajima

This morning we explore Shikoku Island and the port of Uwajima situated deep inside the saw-toothed coast of Uwajima Bay. The city of Uwajima is emerging as the nation's largest pearl cultivation centre and we will learn the process of implanting, harvesting, extracting and sorting pearls on a visit to a pearl farm. We will also see Uwajima Castle, amid a sea of pink and white cherry blossoms, which is built on top of a hill with panoramic views over the town and harbour and the Tenshaen Garden, built in the Samurai era. Enjoy an afternoon at leisure aboard Heritage Adventurer as we sail to Busan, South Korea.

Day 8 - Busan, South Korea

Today we cross the Sea of Japan to South Korean metropolis Busan, known for its beautiful beaches, bustling city streets, Buddhist temples, cinematic legacy, mountains and the largest fish market in South Korea. Options today could include a visit to South Korea's cherry blossom capital Jinhae, or exploring the labyrinthine streets of Gamcheon Culture Village, decorated with various murals and art pieces crafted by the locals themselves, its brightly coloured houses earning it the title 'the Santorini of South Korea', and wandering the endless isles of the Jagalchi Fish Market sampling some of the local delicacies. One of the few Buddhist temples by the sea, descend 108 steps to Haedong Yonggungsa Temple which promises to answer at least one wish through sincere prayers and has an impressive cherry blossom display. Enjoy a new perspective from 411 metres at BUSAN X the SKY tower and marvel at the engineering feat and city icon that is the Busan Gwangandaegyo Bridge.

Day 9 - Fukuoka, Japan

The largest city on the island of Kyushu, Fukuoka is the union of the castle town of Fukuoka on the west bank of the Naka River and the merchant town of Hakata on the east bank. This buzzy metropolis combines an effortless blend of trendy yatai food stalls (which made Lonely Planet and The New York Times 2023 travel lists) with vibrant art installations, historic ruins and colourful

Wild Earth Travel

Small Ships, Big Adventures

0800 945 3327 (within New Zealand) | +64 (0) 3 365 1355 | **1800 107 715** (within Australia)

info@wildearth-travel.com | **wildearth-travel.com**



Wild Earth Travel

Small Ships, Big Adventures

wildearth-travel.com

info@wildearth-travel.com

coastal parks. During our time here, peak cherry blossom season, there may be opportunities to explore the northern city of Kitakyushu and famed Kokura Castle, TOTO Museum and Kawachi Wisteria Garden or Nanzoin Temple with its reclining bronze Buddha (thought to be the world's largest bronze statue) and the Dazaifu Tenmangu Shrine, which is built on the gravesite of poet and scholar Sugawara no Michizane and surrounded by beautiful gardens, ponds and bridges with more than 6,000 plum trees.

Day 10 - Hiroshima/Miyajima

Despite its history, including being the site of the world's first atomic bomb attack on 6 August 1945, Hiroshima is a vibrant and thriving cosmopolitan community. We plan to visit the beautiful Peace Park and Museum, with its sombre cenotaph containing names of atomic bomb victims, the permanently lit 'Flame of Peace' and 450 cherry blossom trees. We plan to time our visit to Miyajima Island to experience the floating Torii Gate. Considered one of Japan's most scenic spots, it is also the location of the famed Daisho-in Buddhist temple and some 1,300 cherry blossom trees. Choose to indulge in fresh local oysters and ice cream, while native Sika deer wander the streets, and enjoy the views of the Shinto Shrine and Torii Gate.

Day 11 - Tamano

From the Port of Uno-Ko, we will visit one of Japan's most famed gardens, Koraku-en, which translates as 'garden of pleasure after'. This 17th-Century formal garden has 28 acres studded with cherry blossom trees to explore and offers stunning views of the nearby towering Okayama Castle. This afternoon we will continue to Kurashiki, where we explore the old merchant quarter, and its fine 17th-Century wooden warehouses painted white with traditional black tiles along a canal framed with weeping willows and filled with koi. There will also be the opportunity to visit the Ohara Museum of Art which includes rare works by Matisse, Picasso and Renoir and collections from Japan's renowned Mingei movement, including ceramics by Shoji Hamada. For those interested in art you may wish to travel to Naoshima Island - Japan's stunning art island. Your time exploring Naoshima Island will have you admiring its architecture, art museums and Labyrinth of Cherry Blossoms, including Chichu Art Museum and Benesse House, featuring work by Japanese and international artists including the iconic pumpkins by Yayoi Kusama.

Day 12 - Osaka

This morning we sail into Honshu's largest port city Osaka where modern architecture and a vibrant dining scene are nestled alongside the 16th Century shogunate Osaka Castle. After breakfast there will be a complimentary coach to a central hotel or the Kansai International Airport. To allow time for disembarkation procedures and travel from Osaka, we do not recommend booking flights departing before 1300 hours. Note: During our voyage, circumstances may make it necessary or desirable to deviate from the proposed itinerary. This can include poor weather and opportunities for making unplanned excursions. Your Expedition Leader will keep you fully informed. This tour offers a variety of activities and excursions. Your personal interests will determine which of these you wish to join. Please note that some activities and excursions will run at similar times, and it will not be possible to participate in both. Accordingly, refunds for excursions and missed landings are not available. Voyages are planned and scheduled pending final regulatory approval.

Please Note:

Itineraries are subject to change.

Wild Earth Travel

Small Ships, Big Adventures

0800 945 3327 (within New Zealand) | +64 (0) 3 365 1355 | **1800 107 715** (within Australia)

info@wildearth-travel.com | **wildearth-travel.com**



Wild Earth Travel

Small Ships, Big Adventures

wildearth-travel.com

info@wildearth-travel.com

YOUR SHIP: HERITAGE ADVENTURER

YOUR SHIP:	Heritage Adventurer
VESSEL TYPE:	Expedition Ship
LENGTH:	124 metres
PASSENGER CAPACITY:	140
BUILT/REFURBISHED:	1991

Heritage Adventurer is a true pioneering expedition vessel of exceptional pedigree. Often referred to as the 'Grande Dame of Polar Exploration' due to her celebrated history and refined design, she was purpose-built for adventure in 1991 at Finland's Rauma shipyard and specifically designed for Polar exploration. Setting a peerless standard in authentic expedition travel, Heritage Adventurer (formerly known as MS Hanseatic) combines the highest passenger ship ice-class rating (1A Super) with an impressive history of Polar exploration. Having held records for the most northern and southern Arctic and Antarctic navigations, and for traversing both the Northwest and Northeast Passages, makes Heritage Adventurer perfect for pioneering New Zealand-based Heritage Expeditions signature experiential expedition travel. Originally designed to accommodate 184 guests, Heritage Adventurer now welcomes just 140 expeditioners ensuring spacious, stylish and comfortable voyages, while a fleet of 14 Zodiacs ensures all guests are able to maximise their expedition adventure. Heritage Adventurer proudly continues our traditions of exceptional, personalised expedition experiences as Heritage Expeditions flagship.

Observation Lounge - One of the most celebrated and best-known features of Heritage Adventurer is the awe-inducing Observation Lounge, Library and Bar. Located on Deck 7 and perched directly above the Bridge, enjoy sweeping 270-degree views through floor to ceiling windows, perfect for wildlife spotting and quick access to the outer deck. Bring your binoculars to spot wildlife, observe the ever-changing landscape, write in your journal or relax with a book.

Observation Deck - Enjoy 360-degree views from the highest point on the ship. The Observation Deck sits above the Observation Lounge and provides exceptional outside viewing options. Stretching the full width of the vessel, this is the perfect spot to take in the surrounding land and seascapes. Perfect on a sunny day, recline in the comfortable sun loungers protected from the wind and elements and watch your voyage unfold.

The Bridge - No expedition is complete without visiting Heritage Adventurer's busy nerve centre. Located on Deck 6, Heritage Expeditions' Open Bridge Policy means you are welcome to observe the Captain and crew at work while enjoying some of the ship's best views. It's a fascinating place to learn about navigation and vessel operations, however please note the Bridge will be closed when departing or arriving at port.

Dining Room - Indulge in fine international cuisine from our talented chefs in the lavish surrounds of our Dining Room on Deck 4. Sensational 270-degree views provide a stunning backdrop to meals here along with an international wine list featuring many outstanding regional wines. With relaxed seating arrangements, all guests can enjoy dining in a single sitting from

Wild Earth Travel

Small Ships, Big Adventures

0800 945 3327 (within New Zealand) | +64 (0) 3 365 1355 | **1800 107 715** (within Australia)

info@wildearth-travel.com | **wildearth-travel.com**

Wild Earth Travel

Small Ships, Big Adventures

wildearth-travel.com

info@wildearth-travel.com

hearty breakfasts setting you up for the day's adventure to sumptuous lunches and multi-course evening dining.

Bistro - Simple fast and delicious meals and snacks are on offer in our relaxed Bistro on Deck 6. Perfect for early risers to enjoy tea, coffee and light breakfast options the Bistro provides great views and opens directly onto a covered and heated teak-deck outdoor dining area.

The Bar and Lounge - The social hub of Heritage Adventurer, the Bar and Lounge on Deck 5 features seating for all guests. Enjoy a beverage at the bar, sink into an armchair, relax on one of the many spacious loungers and watch the world go by through the panoramic windows or make new friends at the communal seating. This multi-tasking space also doubles as the location of daily briefings and evening recaps with the expedition team.

The Gym - Featuring spectacular ocean views, the well-equipped gym is adjacent to the pool, hot tub and sauna in Deck 7's wellbeing zone. Maintain your routine with an elliptical cross trainer, treadmill, rowing machine, stationary bikes, TRX as well as free weights, yoga mats and fitness balls. Towels are provided with change room and shower amenities nearby.

Sauna and Steam Room - True to her Nordic origins, Heritage Adventurer features a dry-heat Finnish sauna and European steam room on Deck 7. Perfect for warming up post Polar plunge or unwinding after a day's adventures, the sauna and steam room include change room facilities, showers and towels.

Swimming Pool and Hot Tub - Surrounded by relaxed teak seating including sun loungers, the open-air saltwater pool can be heated or chilled. Encased in glass the hot tub ensures all-weather use, perfect for those who like to relax with a view following a day of exploring.

Lectures and Presentations - Enjoy informative and entertaining lectures on history, biology, wildlife, and ecology in the comfort

of the Presentation Theatre. With state-of-the-art audio-visual equipment, our world-renowned expedition team will bring your adventure to life through interactive presentations and discussions.



discussions.

Wild Earth Travel

Small Ships, Big Adventures

0800 945 3327 (within New Zealand) | +64 (0) 3 365 1355 | **1800 107 715** (within Australia)

info@wildearth-travel.com | **wildearth-travel.com**

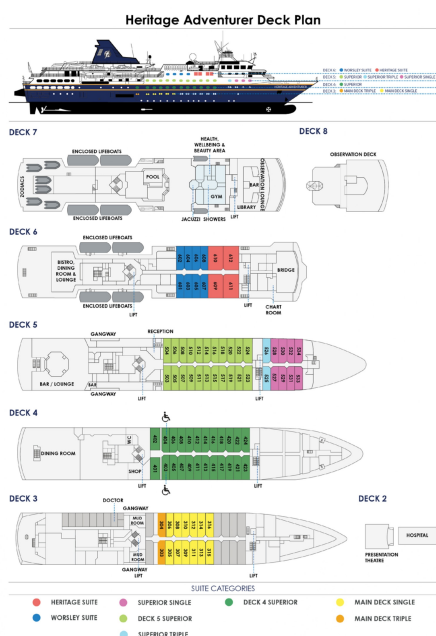
Wild Earth Travel

Small Ships, Big Adventures

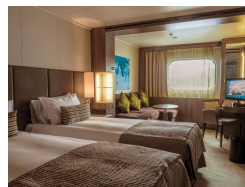
wildearth-travel.com

info@wildearth-travel.com

INSIDE YOUR SHIP



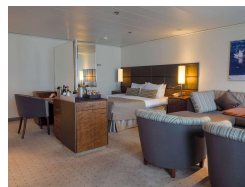
Deck 4 Superior



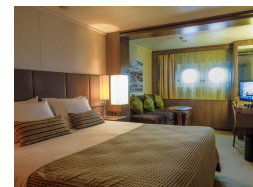
Deck 5 Superior



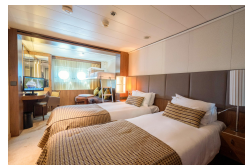
Heritage Suite



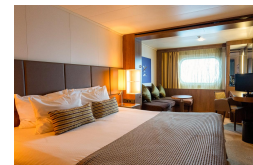
Main Deck Single



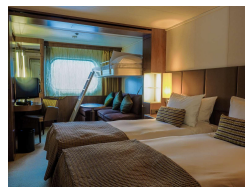
Main Deck Triple



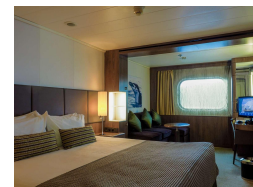
Superior Single



Superior Triple



Worsley Suite



Wild Earth Travel

Small Ships, Big Adventures

0800 945 3327 (within New Zealand) | +64 (0) 3 365 1355 | 1800 107 715 (within Australia)

info@wildearth-travel.com | wildearth-travel.com



Wild Earth Travel

Small Ships, Big Adventures

wildearth-travel.com

info@wildearth-travel.com

PRICING

31-Mar-2026 to 11-Apr-2026

Main Deck Triple	11676 AUD pp
Superior Triple	11952 AUD pp
Deck 4 Superior	13256 AUD pp
Deck 5 Superior	14140 AUD pp
Main Deck Single	15624 AUD pp
Superior Single	17292 AUD pp
Worsley Suite	18324 AUD pp
Heritage Suite	22016 AUD pp

Wild Earth Travel

Small Ships, Big Adventures

0800 945 3327 (within New Zealand) | +64 (0) 3 365 1355 | **1800 107 715** (within Australia)

info@wildearth-travel.com | **wildearth-travel.com**



Wild Earth Travel

Small Ships, Big Adventures

wildearth-travel.com

info@wildearth-travel.com

SPECIAL OFFERS

Online prices reflect current special offers and may vary. This promotion is time - limited and subject to availability. Terms and conditions apply. For more information, please contact us.

Wild Earth Travel

Small Ships, Big Adventures

0800 945 3327 (within New Zealand) | +64 (0) 3 365 1355 | **1800 107 715** (within Australia)

info@wildearth-travel.com | **wildearth-travel.com**