

# Wild Earth Travel

*Small Ships, Big Adventures*

**wildearth-travel.com**

**info@wildearth-travel.com**

## CENTRAL AMERICA JEWELS & PANAMA CANAL LUXURY CRUISE

Between the magic of Panama's crystal-clear waters and the lush jungles of Costa Rica, fall under the spell of a cruise where each port of call reveals its finest treasures. On this unforgettable journey between Colon and Puntarenas, you will discover wild regions with a biodiversity that is unique in the world, meet indigenous communities carrying on ancient traditions, and be mesmerised by the breathtaking views. Navigate between two worlds and sail one of the most mystical shipping routes across the Isthmus of Panama, from one ocean to the other, between heavenly beaches and primary tropical forests.

The wildlife encounters are possible experiences and cannot be guaranteed.



### ITINERARY

#### Day 1 - Colón

Colon is the second largest city in Panama, at the Caribbean entrance of the Panama Canal. Colon is today an important port, and the free trade zone created in 1953 contributed greatly to the development of the city. Colon was founded in 1850 by Americans working on the Panama railroad connecting the Atlantic and Pacific coasts through the isthmus of Panama; the city rapidly overshadowed the older Caribbean ports of Panama when the canal opened.

#### Day 2 - San Blas Islands

Wild Earth Travel

*Small Ships, Big Adventures*

**0800 945 3327** (within New Zealand) | +64 (0) 3 365 1355 | **1800 107 715** (within Australia)

info@wildearth-travel.com | **wildearth-travel.com**



# Wild Earth Travel

*Small Ships, Big Adventures*

**wildearth-travel.com**

**info@wildearth-travel.com**

Located on the north-east coast of Panama, the San Blas archipelago is a string of coral islands in the heart of the Caribbean Sea. More than 300 islands and cays cover an area of 300 square kilometres offering travellers a multitude of treasures. Sheltered behind a long coral reef, the San Blas Islands are full of enchanting anchorages. The long sandy white beaches bound by crystal-clear waters will allow you to relax and enjoy incredible marine fauna before engaging with the Kunas Indian community. Still subsisting on hunting and fishing, they will welcome you in their villages of bamboo houses gathered near the beaches.

The most remote and least developed region of Panama, the province of Darien is an unspoilt land with an extremely rich variety of flora and fauna. Listed by UNESCO as World Heritage, Darien National Park offers its extraordinary scenery of rocky coastlines, mountain ranges, mangroves, rivers and creeks. Discover Playa Muerto, a tiny coastal village home to the Emberas Amerindian community. You will visit the village, attend traditional songs and dances of the locals, and admire beautiful local craft.

## Day 3 - Crossing the Panama Canal

Aboard your ship, experience something unique, that has inspired the imagination of numerous adventurers in the 20th century: sailing the Panama Canal. Its construction started in 1880 under the direction of Ferdinand de Lesseps. Abandoned then resumed, this marvel of engineering was completed by the United States and opened in 1914. The canal crosses the Isthmus of Panama and links the Atlantic to the Pacific. Including three levels of locks and by raising ships to the level of Lake Gatun, almost as if the water was a lift, it allows them to avoid having to round Cape Horn.

## Day 6 - At sea

During your journey at sea, make the most of the many services and activities on board. Treat yourself to a moment of relaxation in the spa or stay in shape in the fitness centre. Depending on the season, let yourself be tempted by the swimming pool or a spot of sunbathing. This journey without a port of call will also be an opportunity to enjoy the conferences or shows proposed on board, depending on the activities offered, or to do some shopping in the boutique or to meet the PONANT photographers in their dedicated space. As for lovers of the open sea, they will be able to visit the ship's upper deck to admire the spectacle of the waves and perhaps be lucky enough to observe marine species. A truly enchanted interlude, combining comfort, rest and entertainment.

## Day 4 - Fuerte Amador, Flamenco Island

An artificial peninsula situated at the Pacific entrance to the Panama Canal, Fuerte Amador is the gateway to several noteworthy sites. Right near there, the impressive Miraflores Locks are a shining example of the engineering feats deployed during the construction of the Panama Canal. Further north, in villages nestling amid dense vegetation, lives the Embera tribe, guardian of the forest and of the Chagres River. This proud people have successfully preserved their traditions and their ancestral way of life, which predate the colonisation of the region by the Spanish.

## Day 7 - Golfito

The town of Golfito lies on the Pacific coast of Costa Rica, in the province of Puntarenas, one of the most humid regions in the world. It was occupied by the indigenous Brunca tribe during the Pre-Columbian era. Once specialised in the export of bananas, Golfito has today become the starting point for visitors who want to reach one of the largest primary tropical rainforests in Central America. Meanwhile, the beaches of Golfo Dulce are some of the most beautiful in Costa Rica, with the lush forest, home to many tropical birds and monkeys as well as a variety of rare species of plants, as their backdrop.

## Day 5 - Playa Muerto, Darien National Park

Wild Earth Travel

*Small Ships, Big Adventures*

**0800 945 3327** (within New Zealand) | +64 (0) 3 365 1355 | **1800 107 715** (within Australia)

info@wildearth-travel.com | wildearth-travel.com



# Wild Earth Travel

*Small Ships, Big Adventures*

**wildearth-travel.com**

**info@wildearth-travel.com**

## Day 8 - Puntarenas

The capital of the eponymous province, Puntarenas is sometimes called "the pearl of the Pacific", for its unique charm. It sits on the Pacific coast of Costa Rica, along the Gulf of Nicoya, lined with long expanses of wild natural environments. Further inland, among the countless natural wonders to be found in the generous rainforest of the Costa Rica's national parks, Poas and Arena volcanoes towers up in all their majestic glory. In this luxuriant natural setting, Costa Rica protects one of the planet's richest biodiversity: monkeys, sloths, tropical birds, iguanas, crocodiles, waterfalls, canyons, and more than ten thousand species of tropical plants.

### Please note:

Itineraries are subject to change.

**Wild Earth Travel**

*Small Ships, Big Adventures*

**0800 945 3327** (within New Zealand) | +64 (0) 3 365 1355 | **1800 107 715** (within Australia)

info@wildearth-travel.com | **wildearth-travel.com**





# Wild Earth Travel

*Small Ships, Big Adventures*

**wildearth-travel.com**

**info@wildearth-travel.com**

## YOUR SHIP: LE DUMONT D'URVILLE

**YOUR SHIP:** Le Dumont d'Urville

**VESSEL TYPE:** Luxury

**LENGTH:**

**PASSENGER CAPACITY:** 92 cabins

**BUILT/REFURBISHED:** 2017/2018

Featuring innovative and environmentally-friendly equipment, elegantly designed staterooms, spacious suites with large windows, and lounge areas that open onto the outside, this new limited-capacity yacht boasting just 92 staterooms and suites will offer you a truly unique cruising experience.

As the first ship in a new series that remains true to the Ponant spirit, Le Dumont d'Urville will embody the unique atmosphere that is the cruise line's hallmark: a subtle blend of refinement, intimacy and comfort.

Aboard this ship that flies the French flag, you will experience the incomparable pleasure of an intimate cruise, with the possibility of exploring an ever-increasing range of destinations in an ethnic-chic ambiance with luxury service.

Experience a luxurious setting where the accent is on authenticity and passion for travel.

### RESTAURANTS

As it is an essential part of French culture, gastronomy will naturally have pride of place aboard this new ship. Through its two restaurants, Le Dumont d'Urville will invite you on a journey to elegance and epicureanism.

In a relaxed atmosphere, a first dining area located on Deck 3

and able to seat 70 will serve grilled meats daily, along with a variety of salads and desserts.

To the back of Deck 4, you will find a 260 m<sup>2</sup> panoramic restaurant which can accommodate all of our passengers in a single sitting. Designed differently to that on our other ships, this dining area, which opens onto the outside, will have a buffet of salads, desserts and cheeses at your disposal. Our discreet and attentive crew will provide table service for hot meals.

### PUBLIC AREAS

Like Le Boreal and its sisterships, Le Dumont d'Urville has many common areas that are designed and equipped to meet all of your needs while preserving the intimacy of each passenger.

A 140 m<sup>2</sup> reception area includes: A reception/concierge desk, An excursions desk, The ship's administrative services, The sales office, manned by our Guest Relations Officer, Our 50 m<sup>2</sup> boutique which sells clothing, jewellery, beauty products, postcards and various accessories, Toilets accessible to passengers with reduced mobility.

A new hydraulic platform with adjustable height provides: Easier boarding than on any other cruise ship, Easier Zodiac embarkation and disembarkation for expeditions, Easier access to the sea for swimming and practising various water sports such as kayaking or paddle-boarding.

A pool deck offering: A pool with a panoramic view, equipped with a counter-current swimming system, A pleasant solarium, An outdoor bar and lounge with armchairs and sofas. A 200 m<sup>2</sup> main lounge which can accommodate all of our passengers to share convivial moments and to host activities organised during the day or evening.



Wild Earth Travel  
*Small Ships, Big Adventures*

**0800 945 3327** (within New Zealand) | +64 (0) 3 365 1355 | **1800 107 715** (within Australia)

info@wildearth-travel.com | **wildearth-travel.com**



# Wild Earth Travel

*Small Ships, Big Adventures*

**wildearth-travel.com**

**info@wildearth-travel.com**

Lastly, a theatre that seats 188, equipped with: The latest sound and lighting technology, A LED wall as the stage backdrop, for the projection of high-resolution images and videos.



and videos.

**Wild Earth Travel**

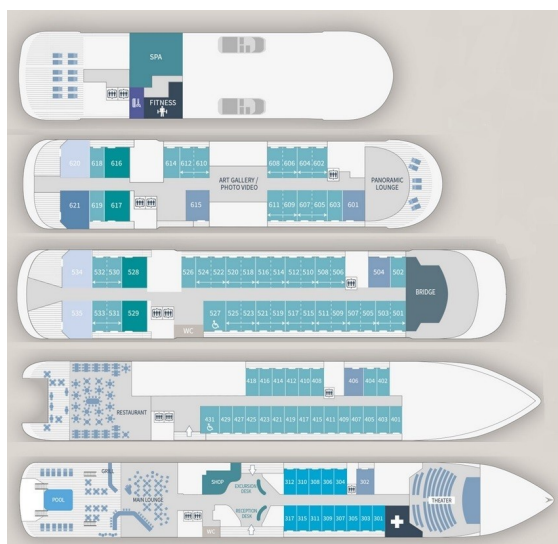
*Small Ships, Big Adventures*

**0800 945 3327** (within New Zealand) | +64 (0) 3 365 1355 | **1800 107 715** (within Australia)

info@wildearth-travel.com | **wildearth-travel.com**

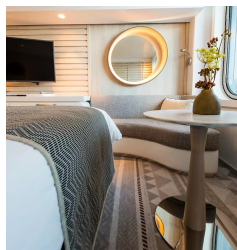


## INSIDE YOUR SHIP

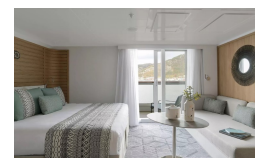


- Owner's Suite Deck 6
- Privilege Suites Deck 5-6
- Grand Deluxe Suites Deck 5-6
- Prestige Suites Deck 5-6
- Deluxe Suites Deck 5-6
- Prestige Cabins Deck 4-5-6
- Deluxe Cabins Deck 3

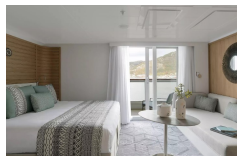
Deluxe Stateroom



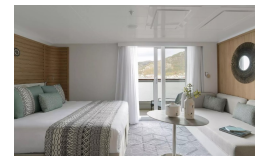
Deluxe Suite Deck 3



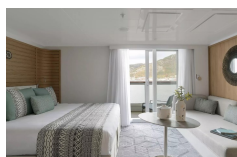
Deluxe Suite Deck 4



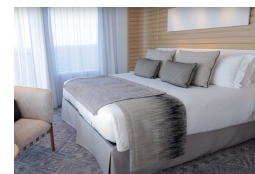
Deluxe Suite Deck 5



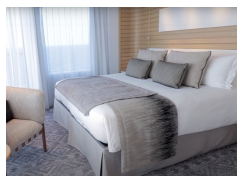
Deluxe Suite Deck 6



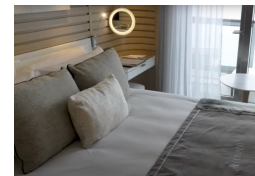
Grand Deluxe Suite Deck 5



Grand Deluxe Suite Deck 6



Prestige Deck 4



# Wild Earth Travel

*Small Ships, Big Adventures*

**wildearth-travel.com**

**info@wildearth-travel.com**

## PRICING

### 19-Dec-2025 to 26-Dec-2025

Deluxe Stateroom	7530 AUD pp
Prestige Deck 4	8360 AUD pp
Prestige Deck 5	8770 AUD pp
Prestige Deck 6	9270 AUD pp
Deluxe Suite Deck 3	12920 AUD pp
Deluxe Suite Deck 6	12920 AUD pp
Deluxe Suite Deck 5	12920 AUD pp
Deluxe Suite Deck 4	12920 AUD pp
Prestige Deck 5 Suite	17480 AUD pp
Prestige Deck 6 Suite	18390 AUD pp
Privilege Suite Deck 6	19290 AUD pp
Privilege Suite Deck 5	19290 AUD pp
Grand Deluxe Suite Deck 6	21200 AUD pp
Grand Deluxe Suite Deck 5	21200 AUD pp

### 26-Dec-2025 to 02-Jan-2026

Deluxe Stateroom	8640 AUD pp
Prestige Deck 4	9600 AUD pp
Prestige Deck 5	10080 AUD pp
Prestige Deck 6	10650 AUD pp
Deluxe Suite Deck 3	14840 AUD pp
Deluxe Suite Deck 4	14840 AUD pp
Deluxe Suite Deck 5	14840 AUD pp
Deluxe Suite Deck 6	14840 AUD pp
Prestige Deck 5 Suite	20080 AUD pp
Prestige Deck 6 Suite	21140 AUD pp
Privilege Suite Deck 6	22190 AUD pp
Privilege Suite Deck 5	22190 AUD pp
Grand Deluxe Suite Deck 5	24370 AUD pp
Grand Deluxe Suite Deck 6	24370 AUD pp

Wild Earth Travel

*Small Ships, Big Adventures*

**0800 945 3327** (within New Zealand) | +64 (0) 3 365 1355 | **1800 107 715** (within Australia)

info@wildearth-travel.com | wildearth-travel.com



# Wild Earth Travel

*Small Ships, Big Adventures*

**wildearth-travel.com**

**info@wildearth-travel.com**

## PRICING

### 02-Jan-2026 to 09-Jan-2026

Deluxe Stateroom	7530 AUD pp
Prestige Deck 4	8360 AUD pp
Prestige Deck 5	8770 AUD pp
Prestige Deck 6	9270 AUD pp
Deluxe Suite Deck 3	12920 AUD pp
Deluxe Suite Deck 6	12920 AUD pp
Deluxe Suite Deck 4	12920 AUD pp
Deluxe Suite Deck 5	12920 AUD pp
Prestige Deck 5 Suite	17480 AUD pp
Prestige Deck 6 Suite	18390 AUD pp
Privilege Suite Deck 5	19290 AUD pp
Privilege Suite Deck 6	19290 AUD pp
Grand Deluxe Suite Deck 5	21200 AUD pp
Grand Deluxe Suite Deck 6	21200 AUD pp

### 09-Jan-2026 to 16-Jan-2026

Deluxe Stateroom	7970 AUD pp
Prestige Deck 4	8850 AUD pp
Prestige Deck 5	9290 AUD pp
Prestige Deck 6	9810 AUD pp
Deluxe Suite Deck 5	13690 AUD pp
Deluxe Suite Deck 4	13690 AUD pp
Deluxe Suite Deck 6	13690 AUD pp
Deluxe Suite Deck 3	13690 AUD pp
Prestige Deck 5 Suite	18540 AUD pp
Prestige Deck 6 Suite	19500 AUD pp
Privilege Suite Deck 6	20460 AUD pp
Privilege Suite Deck 5	20460 AUD pp
Grand Deluxe Suite Deck 6	22500 AUD pp
Grand Deluxe Suite Deck 5	22500 AUD pp

Wild Earth Travel

*Small Ships, Big Adventures*

**0800 945 3327** (within New Zealand) | +64 (0) 3 365 1355 | **1800 107 715** (within Australia)

info@wildearth-travel.com | wildearth-travel.com



# Wild Earth Travel

*Small Ships, Big Adventures*

**wildearth-travel.com**

**info@wildearth-travel.com**

## PRICING

### 15-Jan-2027 to 22-Jan-2027

Deluxe Stateroom	7310 AUD pp
Prestige Deck 4	8100 AUD pp
Prestige Deck 5	8510 AUD pp
Prestige Deck 6	8990 AUD pp
Deluxe Suite Deck 5	12520 AUD pp
Deluxe Suite Deck 3	12520 AUD pp
Deluxe Suite Deck 4	12520 AUD pp
Deluxe Suite Deck 6	12520 AUD pp
Prestige Deck 5 Suite	16920 AUD pp
Prestige Deck 6 Suite	17800 AUD pp
Privilege Suite Deck 5	18670 AUD pp
Privilege Suite Deck 6	18670 AUD pp
Grand Deluxe Suite Deck 6	20520 AUD pp
Grand Deluxe Suite Deck 5	20520 AUD pp

Deluxe Stateroom	6860 AUD pp
Prestige Deck 4	7590 AUD pp
Prestige Deck 5	7980 AUD pp
Prestige Deck 6	8420 AUD pp
Deluxe Suite Deck 6	11720 AUD pp
Deluxe Suite Deck 3	11720 AUD pp
Deluxe Suite Deck 4	11720 AUD pp
Deluxe Suite Deck 5	11720 AUD pp
Prestige Deck 5 Suite	15820 AUD pp
Prestige Deck 6 Suite	16640 AUD pp
Privilege Suite Deck 5	17460 AUD pp
Privilege Suite Deck 6	17460 AUD pp
Grand Deluxe Suite Deck 5	19180 AUD pp
Grand Deluxe Suite Deck 6	19180 AUD pp

### 26-Feb-2027 to 05-Mar-2027



# Wild Earth Travel

*Small Ships, Big Adventures*



**wildearth-travel.com**

**info@wildearth-travel.com**

## SPECIAL OFFERS

Online prices reflect the current brochure fare savings of up to 30%. Prices may change based on demand. Terms and conditions apply. This special offer is subject to availability. Please contact us for more details.



**Wild Earth Travel**

*Small Ships, Big Adventures*

**0800 945 3327** (within New Zealand) | +64 (0) 3 365 1355 | **1800 107 715** (within Australia)

info@wildearth-travel.com | **wildearth-travel.com**