



CELTIC SECRETS & LANDSCAPES - IRELAND & SCOTLAND IN LUXURY

In partnership with Connaissance des Arts and with the exceptional presence of Guy Boyer, editorial director of Connaissance des Arts.

With landscapes ranging from verdant moors to majestic lakes, and captivating cliffs sculpted by the wind, the British archipelago invites you to escape and revel in calm and tranquility... along the beautiful shores of the Irish Sea , board Le Lap erouse for an unforgettable 10-day cruise. The epitome of a land of legends, Ireland, the aptly named Emerald Isle , and its neighbors will immerse you in a world overflowing with magic, between fortified castles, neolithic sites and geological marvels.

At each port of call on your trip, every guest will be able to choose one included activity from the selection offered by PONANT. During this cruise, discover the mythical Highlands region and the historic village of Glencoe from Fort William. From Belfast, admire the Giant's Causeway, a geological marvel and UNESCO World Heritage Site, or visit Blarney Castle, one of the island's most famous and majestic, from Cobh. The diversity of options on offer promises intense and varied experiences. (Find the full list of excursions under the Itinerary tab.)

From Glasgow, the capital of Scotland boasting a convivial atmosphere and authentic charm, your ship will sail to bormory , a charming fishing port with multicoloured houses and with a distillery that produces a renowned single malt.

You will then sail towards Fort William. This harbour town on the shores of Loch Linnhe is steeped in Scottish history and tradition, close to the beautiful and spectacular scenery of Glencoe.

With Ireland in sight, Le Lap erouse will take you to Killybegs , the entrance point for Donegal. You will be enchanted by its sheer cliffs, its deserted beaches, its breathtaking scenery and its welcoming pubs.

Then the far north of the Emerald Isle will reveal itself. In Greencastle , a fishing port guarding the entrance to Lough Foyle, discover the enigmatic Inishowen Peninsula and its breathtaking landscapes from the famous coastal trail, the Wild Atlantic Way.

Le Lap erouse will sail towards Belfast , where you will be able to visit the Giant's Causeway. This massive geological formation is a UNESCO World Heritage Site and features over 40,000 basalt columns.

You will head for Warrenpoint , a seaside resort in Northern Ireland set in an exceptional natural environment, which promises beautiful walks in the Silent Valley Mountain Park.

Le Lap erouse will then make a port of call at Fishguard , a small and peaceful coastal town nestling in the hollow of two hills, an ideal starting point for exploring the Welsh countryside.

Wild Earth Travel

Small Ships, Big Adventures

wildearth-travel.com

info@wildearth-travel.com

You will make a stop in Cobh. This charming and romantic town, steeped in history and legend, will reveal itself through its maze of cobbled streets with, in the background, its 17th-century fortress and its majestic forest.

Your cruise will end in Dublin, the Irish capital brimming with convivial atmosphere and authentic charm.



ntic charm.

ITINERARY

Day 1 - Glasgow, Scotland

In the heart of the Clyde Valley, the bustling city of Glasgow contrasts starkly

with the wild beauty of the surrounding countryside. Scotland's biggest city overflows with landmarks from its extensive artistic heritage and outstanding architectural tradition. The city's chequerboard layout makes walking through the major pedestrian thoroughfares easy: go with the flow and let the lively street atmosphere take you past the many Victorian monuments. Don't miss the collections on display in the numerous museums and art galleries. The Kelvingrove Art Gallery and Museum is an outstanding example.

Day 2 - Tobermory, Isle of Mull

Located at the northernmost tip of the lovely Isle of Mull, Tobermory has to be one of the most beautiful natural seaports on Scotland's West Coast. Founded in 1788, this ancient fishing village has been converted to a leisure port highly appreciated today for its surroundings and the quiet charm it exudes. You will definitely be won over by the row of many-storied houses on the hillside, illuminating the harbour with their vibrant colours. Although the real spectacle is outdoors, no less interesting are the Mull Museum dedicated the local history and the exhibitions at the An Tobar art gallery.

Day 3 - Oban, Scotland

Oban is on the west coast of Scotland, opposite the Isle of Mull. It is the capital of the county of Argyll, a rural region of the Highlands considered to be the cradle of Scotland. Coming from Ireland, the Gaels settled here, bringing their language and culture. From "the Little Bay", its name in Scottish Gaelic, you will arrive in Kilmartin Glen, the site renowned for having the largest concentration of Neolithic and Bronze Age remains in Scotland. Among this spectacular site's 350 ancient monuments, you will discover standing stones, alignments of cairns and stone circles. Glen Coe Valley will then reveal its dramatic landscapes, shaped by volcanic activity. This valley, one of the wildest in Scotland, has been used as a location for the series Outlander. The discovery of the region will end with a visit to a whisky distillery, a unique opportunity to taste an exceptional product.

Day 4 - Killybegs

Wild Earth Travel

Small Ships, Big Adventures

0800 945 3327 (within New Zealand) | +64 (0) 3 365 1355 | **1800 107 715** (within Australia)

info@wildearth-travel.com | wildearth-travel.com

Wild Earth Travel

Small Ships, Big Adventures



wildearth-travel.com

info@wildearth-travel.com

Day 7 - Warrenpoint

Tucked away and sheltered by a large inlet, this charming fishing port is located on Ireland's most northern extremity, in the heart of the southern coast of County Donegal. As your boat glides into the port, soak up the dazzling colours of the trawlers docked in the harbour. You may well have the opportunity to tour the Donegal Carpets Factory, one of the world's oldest handmade carpet manufacturers. You can also take a tour of the Glenveagh National Park and its castle, after having crossed through the wild, untamed beauty of northern Ireland. Donegal is a rambler's paradise, and the Blue Stack Mountains are sure to have you hooked with their peace, quiet and breathtakingly beautiful landscapes.

On the shores of Carlingford Lough, a fjord marking the eastern end of the border between Ireland and the UK, lies the charming seaside resort of Warrenpoint. Set in stunning natural surroundings and dominated by the Mourne and Cooley peaks, the area is ideal for walking. It is also the starting point for an escape to discover the archaeological site of Fort Navan, also known as Emain Macha, once considered the capital of the Ulster kings. At the Castle Ward, a Victorian tower house, you can gain an insight into the lives of its inhabitants in the 18th century. Or you may prefer to learn about the history of Belfast's water supply at Silent Valley Park.

Day 5 - Greencastle (Foyle port)

From lush meadows to spectacular cliffs sculpted by the crashing waves, from small houses with thatched roofs to the enigmatic ruins of ageless castles, the Inishowen Peninsula offers a concentration of Ireland's most beautiful and wildest aspects. From Greencastle, a small port town guarding the entrance to Lough Foyle, set off to explore these breathtaking landscapes and discover the vibrant soul of this territory, through its history, its lively villages and pubs and its famous coastal trail: the Wild Atlantic Way.

Day 8 - Fishguard

A small coastal town located in the South Wales, Fishguard will offer you a peaceful stop during your cruise. Nestling in the hollow of two hills, the city, once a Viking trading post, is now the ideal starting point for exploring the Welsh countryside. Across its vast expanses of fertile land, its green valleys and its magnificent moors, the region will reveal its rich historical heritage to you. Among other things, you will be able to visit mediaeval Pembroke Castle, renowned for its impressive architecture and the illustrious people who have lived there, such as Gerald de Windsor.

Day 6 - Belfast, Northern Ireland

The capital city of Northern Ireland is located on the very tip of Belfast Lough, in the north-east of the Emerald Isle. Along the waterfront, the building shaped like a fragmented liner is non other than the Titanic Belfast, a homage to the famous transatlantic liner, with full-scale reconstructions making for an insightful experience of the Belle Epoque. In the historical centre, you'll also travel back in time when you see the majestic Edwardian columns of the City Hall, and the imposing neo-gothic towers of Queen's University for example. The carved wooden façades of the Victorian pubs will certainly entice you in for a pint of beer or chilled cider.

Day 9 - Cobh

From the very endearing small town of Cobh, you will set out to discover Cork, rich with a history that goes back to Viking times. During our visit here, we invite you to take an exceptional trip to Blarney Castle, dating from 1446 and renowned for its legends and its ancient stones. At the end of your visit, do not miss the chance of kissing the "Stone of Eloquence", located at the top of the monument, which legend tells will confer its powers upon you.

Day 10 - Dublin

Wild Earth Travel

Small Ships, Big Adventures

0800 945 3327 (within New Zealand) | +64 (0) 3 365 1355 | **1800 107 715** (within Australia)

info@wildearth-travel.com | **wildearth-travel.com**



Wild Earth Travel

Small Ships, Big Adventures

wildearth-travel.com

info@wildearth-travel.com

The Irish capital stretches along the banks of the Liffey to Dublin bay, on the East coast of Ireland. Discover Ireland's warm conviviality in the pedestrian district of Temple Bar. Its cobbled streets are brimming with fabulous shops, pubs and arts centres. Next to Trinity College, famous for its 18th century library, you can stroll along Grafton Street: in one of its famous tea shops, try a delicious scone and clotted cream served hot and melt-in-the-mouth with jam. Not far from here, the majestic O'Connell bridge leads you to the avenue with the same name, on which Spire, a luminous contemporary sculpture presides.

Please note:

Itineraries are subject to change.

Wild Earth Travel

Small Ships, Big Adventures

0800 945 3327 (within New Zealand) | +64 (0) 3 365 1355 | **1800 107 715** (within Australia)

info@wildearth-travel.com | **wildearth-travel.com**

Wild Earth Travel

Small Ships, Big Adventures



wildearth-travel.com

info@wildearth-travel.com

YOUR SHIP: LE LAPEROUSE

YOUR SHIP:	Le Laperouse
VESSEL TYPE:	Luxury
LENGTH:	127 metres
PASSENGER CAPACITY:	92 cabins
BUILT/REFURBISHED:	2017/2018

Featuring innovative and environmentally-friendly equipment, elegantly designed cabins, spacious suites with large windows, and lounge areas that open onto the outside, this new limited-capacity yacht boasting just 92 cabins and suites will offer you a truly unique cruising experience.

Aboard this ship that flies the French flag, you will experience the incomparable pleasure of an intimate cruise, with the possibility of exploring an ever-increasing range of destinations in an ethnic-chic ambiance with luxury service.

Experience a luxurious setting where the accent is on authenticity and passion for travel.

RESTAURANTS

As it is an essential part of French culture, gastronomy will naturally have pride of place aboard this new ship. Through its two restaurants, Le Laperouse will invite you on a journey to elegance and epicureanism.

In a relaxed atmosphere, a first dining area located on Deck 3 and able to seat 70 will serve grilled meats daily, along with a variety of salads and desserts.

To the back of Deck 4, you will find a 260 m² panoramic restaurant which can accommodate all of our passengers in a

single sitting. Designed differently to that on our other ships, this dining area, which opens onto the outside, will have a buffet of salads, desserts and cheeses at your disposal. Our discreet and attentive crew will provide table service for hot meals.

PUBLIC AREAS

Like Le Boreal and its sisterships, Le Laperouse has many common areas that are designed and equipped to meet all of your needs while preserving the intimacy of each passenger.

A 140 m² reception area includes: A reception/concierge desk, An excursions desk, The ship's administrative services, The sales office, manned by our Guest Relations Officer, Our 50 m² boutique which sells clothing, jewellery, beauty products, postcards and various accessories, Toilets accessible to passengers with reduced mobility.

A new hydraulic platform with adjustable height provides: Easier boarding than on any other cruise ship, Easier Zodiac embarkation and disembarkation for expeditions, Easier access to the sea for swimming and practising various water sports such as kayaking or paddle-boarding.

A pool deck offering: A pool with a panoramic view, equipped with a counter-current swimming system, A pleasant solarium, An outdoor bar and lounge with armchairs and sofas.

A 200 m² main lounge which can accommodate all of our passengers to share convivial moments and to host activities organised during the day or evening.

Lastly, a theatre that seats 188, equipped with: The latest sound and lighting technology, A LED wall as the stage backdrop, for the projection of high-resolution images and videos.

Wild Earth Travel

Small Ships, Big Adventures

0800 945 3327 (within New Zealand) | +64 (0) 3 365 1355 | **1800 107 715** (within Australia)

info@wildearth-travel.com | **wildearth-travel.com**



Wild Earth Travel

Small Ships, Big Adventures



wildearth-travel.com

info@wildearth-travel.com



and videos.



Wild Earth Travel

Small Ships, Big Adventures

0800 945 3327 (within New Zealand) | +64 (0) 3 365 1355 | **1800 107 715** (within Australia)

info@wildearth-travel.com | **wildearth-travel.com**

Wild Earth Travel

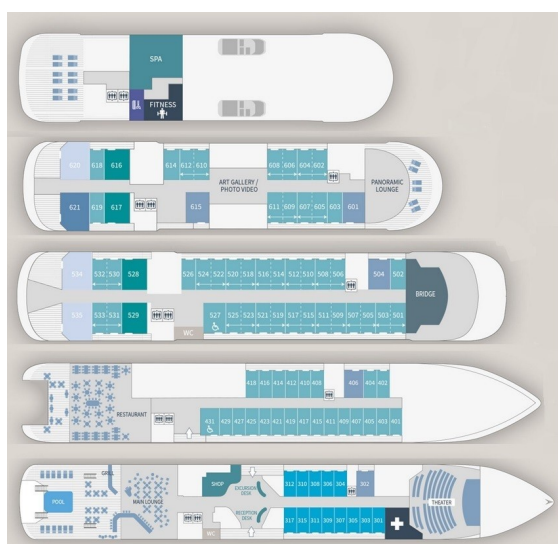
Small Ships, Big Adventures



wildearth-travel.com

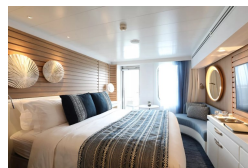
info@wildearth-travel.com

INSIDE YOUR SHIP

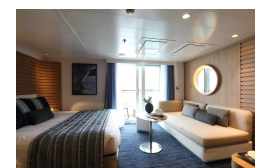


- Owner's Suite Deck 6
- Privilege Suites Deck 5-6
- Grand Deluxe Suites Deck 5-6
- Prestige Suites Deck 5-6
- Deluxe Suites Deck 5-6
- Prestige Cabins Deck 4-5-6
- Deluxe Cabins Deck 3

Deluxe Stateroom



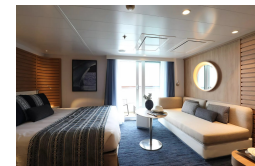
Deluxe Suite Deck 3



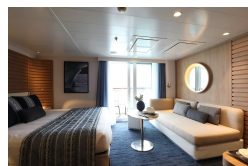
Deluxe Suite Deck 4



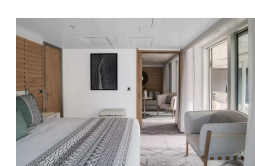
Deluxe Suite Deck 5



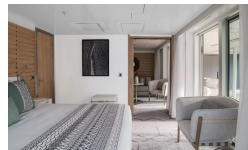
Deluxe Suite Deck 6



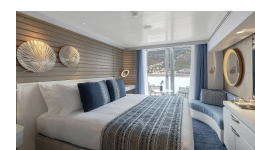
Grand Deluxe Suite Deck 5



Grand Deluxe Suite Deck 6



Prestige Deck 4



Wild Earth Travel
Small Ships, Big Adventures

0800 945 3327 (within New Zealand) | +64 (0) 3 365 1355 | 1800 107 715 (within Australia)

info@wildearth-travel.com | wildearth-travel.com

Wild Earth Travel

Small Ships, Big Adventures

wildearth-travel.com

info@wildearth-travel.com

PRICING

12-Apr-2026 to 21-Apr-2026

Deluxe Stateroom	9250 AUD pp
Prestige Deck 4	9740 AUD pp
Prestige Deck 5	10020 AUD pp
Prestige Deck 6	10410 AUD pp
Deluxe Suite Deck 5	13950 AUD pp
Deluxe Suite Deck 3	13950 AUD pp
Deluxe Suite Deck 4	13950 AUD pp
Deluxe Suite Deck 6	13950 AUD pp
Prestige Deck 5 Suite	15000 AUD pp
Prestige Deck 6 Suite	15480 AUD pp
Privilege Suite Deck 6	15860 AUD pp
Privilege Suite Deck 5	15860 AUD pp
Grand Deluxe Suite Deck 5	16340 AUD pp
Grand Deluxe Suite Deck 6	16340 AUD pp

Deluxe Stateroom	9870 AUD pp
Prestige Deck 4	10390 AUD pp
Prestige Deck 5	10690 AUD pp
Prestige Deck 6	11110 AUD pp
Deluxe Suite Deck 5	14900 AUD pp
Deluxe Suite Deck 6	14900 AUD pp
Deluxe Suite Deck 3	14900 AUD pp
Deluxe Suite Deck 4	14900 AUD pp
Prestige Deck 5 Suite	16030 AUD pp
Prestige Deck 6 Suite	16540 AUD pp
Privilege Suite Deck 5	16950 AUD pp
Privilege Suite Deck 6	16950 AUD pp
Grand Deluxe Suite Deck 5	17470 AUD pp
Grand Deluxe Suite Deck 6	17470 AUD pp

28-Apr-2026 to 07-May-2026

Wild Earth Travel

Small Ships, Big Adventures

0800 945 3327 (within New Zealand) | +64 (0) 3 365 1355 | **1800 107 715** (within Australia)

info@wildearth-travel.com | wildearth-travel.com



Wild Earth Travel

Small Ships, Big Adventures



wildearth-travel.com

info@wildearth-travel.com

SPECIAL OFFERS

Online prices reflect the current brochure fare savings of up to 30%. Prices may change based on demand. Terms and conditions apply. This special offer is subject to availability. Please contact us for more details.



Wild Earth Travel

Small Ships, Big Adventures

0800 945 3327 (within New Zealand) | +64 (0) 3 365 1355 | **1800 107 715** (within Australia)

info@wildearth-travel.com | **wildearth-travel.com**