

# Wild Earth Travel

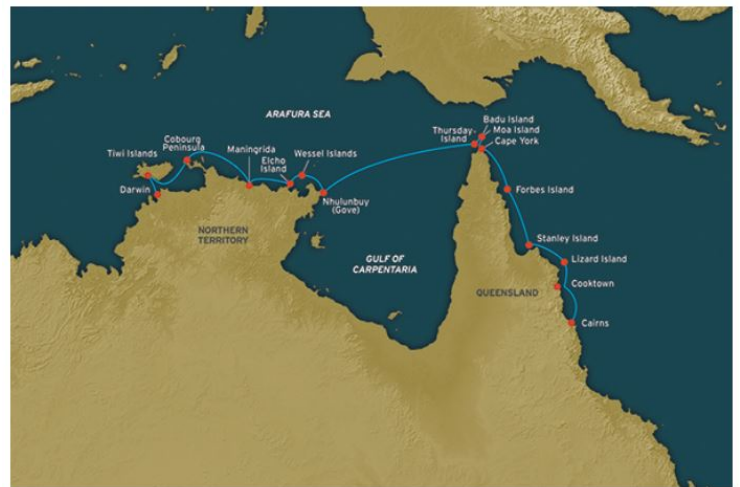
*Small Ships, Big Adventures*

**wildearth-travel.com**

**info@wildearth-travel.com**

## CAPE YORK AND ARNHEM LAND - A CRUISE FROM DARWIN OR CAIRNS

Explore Northern Australian coastline and immerse yourself in the diverse cultures of Indigenous Australia, with this exclusive Cape York & Arnhem Land itinerary. This expedition will be focusing on Australian art and curated by traditional artist, Brian Robinson, as we will be taking you into some of the continent's most acclaimed art centres. On board, you will also have the opportunity to create your own unique piece with an art class hosted by Brian himself. Sailing aboard Coral Discoverer, this itinerary will follow the coast of the remote and culturally rich Arnhem Land, crossing the Gulf of Carpentaria and into the Torres Strait. Stand at the very tip of Australia at Cape York, before we make our way down through the Great Barrier Reef to Cairns. Experience traditions unchanged for centuries, sacred rock art and remote lands only permitted accessible by a fortunate few. See how generations have passed on artistic traditions, and how this important cultural legacy is being kept alive today. Visit world renowned art centres in Yirrkala and Nhulunbuy. Watch Elders tell their story through art in Maningrida. See how the women of Tiwi Islands give back to their community through their local fabric printmaking and clothing business. Join Coral Expeditions on this exciting expedition to the far reaches of Australian's Northern coastline.



### ITINERARY

#### DAY 1: DEPART DARWIN

Board at Darwin's Fort Hill Wharf at 7:00am ahead of our 8:00am departure. Spend time getting to know your fellow travellers and enjoy the Captain's Welcome Drinks before the first of many delicious dinners

#### TIWI ISLANDS

Coral Expeditions tiwi islands Visit remote Bathurst Island. With local Tiwi guides, we learn of the unique culture and visit the art centre. Be welcomed with a cultural performance and basket-weaving exhibition before enjoying a traditional Australian afternoon tea of damper and billy tea.

#### COBOURG PENINSULA

Wild Earth Travel

*Small Ships, Big Adventures*

**0800 945 3327** (within New Zealand) | +64 (0) 3 365 1355 | **1800 107 715** (within Australia)

info@wildearth-travel.com | **wildearth-travel.com**



# Wild Earth Travel

*Small Ships, Big Adventures*

**wildearth-travel.com**

**info@wildearth-travel.com**

Discover Garig Gunak Barlu National Park on the Cobourg Peninsula. Join Park Rangers in Port Essington, famous for the failed Victoria Settlement, and explore the ruins while learning about the fascinating history of this early colonial outpost.

## MANINGRIDA

Anchor in the mighty Liverpool River and travel ashore to explore the Maningrida Art Centre, museum, and the local boutique, where hand-painted textiles can be purchased.

## ELCHO ISLAND: GALIWIN'KU AND GAWA

torres-strait-islands-coral-expeditions The friendly locals of Elcho Island proudly welcome us to their community this morning. Meet some of the local artists who have their unique art exhibited in the famous art galleries of the world including the Louvre. In the afternoon, visit the community and school of Gawa.

## HOLE IN THE WALL AND WESSEL ISLANDS

We travel through the narrow channel between Raragala and Guluwuru Islands, known as the 'Hole in the Wall'.

## YIRRKALA ART CENTRE

Visit the spectacular Buku-Larrnggay Mulka Centre at Yirrkala, outside of Nhulunbuy. Here, the Yirrkala Art Centre represents Yol u artists from around the region. Established in 1976 as an act of self-determination, the art centre has forged a vibrant path for Yol u contemporary art. A museum built in 1988 houses a collection of works detailing historical artefacts and important moments, including the Message Sticks from 1935 and the Yirrkala Church Panels from 1963.

## CRUISING THE GULF OF CARPENTARIA

Enjoy a relaxing day at sea with presentations by our guest lecturers. You will hear about the fascinating history of the Macassan traders and early explorers of the Arnhem Land coast.

## BADU ISLAND & TORRES STRAIT

Have the unique opportunity to visit Badu Island. Visit the fabulous art centre and enjoy the hospitality of the Badu islanders. We may visit additional Torres Strait Islands, such as Thursday Island and Moa Island.

## NORTHERNMOST POINT OF CAPE YORK

Cruise to the Tip of Cape York and enjoy champagne while the sun sets.

## FORBES ISLAND

Enjoy a day exploring Forbes Island, an excellent spot for swimming or snorkelling from the pristine sandy beaches. Take a walk to the grave of beche-de-mer fisherman Frederick Lancaster.

## DAVIE REEF AND FLINDERS GROUP

Visit Stanley Island in the Flinders Group, and view the isolated Endaen Aboriginal rock art depicting the first sailing ships to visit Queensland shores. At Davie Reef, enjoy swimming and snorkelling and observe the large seabird rookery.

## LIZARD ISLAND

Explore secluded Lizard Island, one of the most beautiful islands on the Queensland coast. Venture into the crystal clear waters for swimming and snorkelling or take a walk along the sparkling white beach. An energetic guided walk leads to Cook's Look - from this peak, Captain James Cook was able to sight a navigable passage through the treacherous reef after repairing the HMB Endeavour.



# Wild Earth Travel

*Small Ships, Big Adventures*

**wildearth-travel.com**

**info@wildearth-travel.com**

## DAY 12: ARRIVE IN CAIRNS

Arrive in Cairns and disembark at 8:00am.

### Please Note:

This itinerary is an indication of the destinations we visit and activities on offer. Throughout the expedition we may make changes to the itinerary as necessary to maximise your expeditionary experience. Allowances may be made for unexpected closures, seasonal variations, weather, tidal conditions and any other event that may affect the operation of the vessel.



**0800 945 3327** (within New Zealand) | +64 (0) 3 365 1355 | **1800 107 715** (within Australia)

info@wildearth-travel.com | **wildearth-travel.com**



# Wild Earth Travel

*Small Ships, Big Adventures*

**wildearth-travel.com**

**info@wildearth-travel.com**

## YOUR SHIP: CORAL ADVENTURER

<b>YOUR SHIP:</b>	<b>Coral Adventurer</b>
<b>VESSEL TYPE:</b>	<b>Expedition Ship</b>
<b>LENGTH:</b>	<b>93.4 meters</b>
<b>PASSENGER CAPACITY:</b>	<b>120 (60 staterooms)</b>
<b>BUILT/REFURBISHED:</b>	<b>2019</b>

Designed and built to be the most modern tropical expedition ship afloat, Coral Adventurer debuted in April 2019. She features comfortable Australian interiors, Xplorer tender mechanism, intimate guest experience, and personalized service.

### EXPEDITION CAPABILITIES

- > Two trademark Xplorer tenders seat all passengers for shore excursions
- > Six zodiacs for more intrepid exploration
- > Lecture lounge with multimedia for daily expedition briefings and presentations
- > Small on-board Library
- > Shallow draft and advanced navigation and propulsion systems

### MARINE IMMERSION

- > Navigator lounge in the bridge giving a vantage point of ship operations
- > Over 1000 sq m of open deck space including a wrap-around promenade deck with panoramic views
- > Engine room tours and high level of crew interaction with guests

- > Barralong Room for hosting scientific research or exhibitions

### FOOD AND WINE FEATURES

- > Communal 'wine table'
- > Galley viewing window
- > Multiple indoor and outdoor bars, including our Explorer bar on the Vista Deck
- > Curated wine cellar featuring boutique wines and exceptional vintage Australian reds.

### GUEST COMFORT

- > All outside-facing guest cabins with en-suite bathrooms; majority have private balcony
- > Active stabilisers
- > Gym
- > Passenger elevator
- > Wi-Fi available in all guest areas



guest areas

Wild Earth Travel

*Small Ships, Big Adventures*

**0800 945 3327** (within New Zealand) | +64 (0) 3 365 1355 | **1800 107 715** (within Australia)

info@wildearth-travel.com | wildearth-travel.com

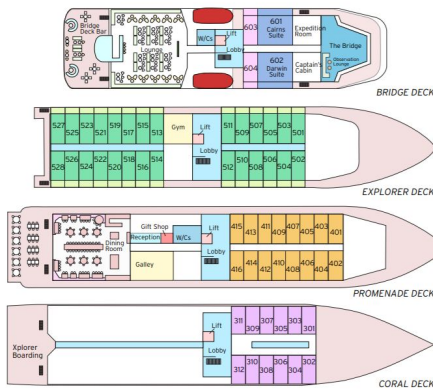
# Wild Earth Travel

*Small Ships, Big Adventures*

[wildearth-travel.com](http://wildearth-travel.com)

[info@wildearth-travel.com](mailto:info@wildearth-travel.com)

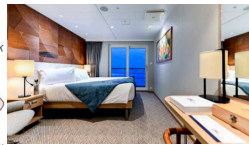
## INSIDE YOUR SHIP



**Name** Coral Adventurer  
**Owners** CPC Marine Pty Ltd  
**Flag** Australian  
**Year of Build** 2019  
**LOA** 93.4 metres  
**Beam** 17.2 metres  
**Draught** 4.5 metres  
**Gross Tonnage** 5599 tonnes  
**Construction** VARD  
**Main Engines** Caterpillar 3512C  
**Azimuth Pod** Rolls Royce Azipull  
**Cruising Speed** 13.8 knots  
**Max. passengers** 120  
**Max. crew** 48  
**Tenders** 2 Xplorers, 6 Zodiacs

**BRIDGE DECK BALCONY SUITE**  
 • 55.8sqm • Private Balcony • Twin or junior king  
**BRIDGE DECK BALCONY STATEROOM**  
 • 21.4sqm • Private Balcony • Twin or junior king beds  
**EXPLORER DECK BALCONY STATEROOM**  
 • 21.4sqm • Private Balcony • Twin or junior king  
**PROMENADE DECK STATEROOM**  
 • 17sqm • Picture windows • Twin or junior king beds  
**CORAL DECK STATEROOM**  
 • 17sqm • Picture windows • Twin or junior king

### BRIDGE DECK BALCONY STATEROOM



### BRIDGE DECK BALCONY SUITE



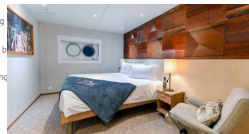
### Bridge Deck Balcony



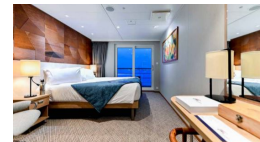
### Bridge Deck Balcony Stateroom



### CORAL DECK STATEROOM



### EXPLORER DECK BALCONY STATEROOM



### Main Deck A



### Main Deck A Stateroom



Wild Earth Travel

*Small Ships, Big Adventures*

0800 945 3327 (within New Zealand) | +64 (0) 3 365 1355 | 1800 107 715 (within Australia)

[info@wildearth-travel.com](mailto:info@wildearth-travel.com) | [wildearth-travel.com](http://wildearth-travel.com)



# Wild Earth Travel

*Small Ships, Big Adventures*

**wildearth-travel.com**

**info@wildearth-travel.com**

## PRICING

### 08-Aug-2025 to 19-Aug-2025

Main Deck B	13750 AUD pp
Main Deck A	14940 AUD pp
Promenade A	17840 AUD pp
Bridge Deck Balcony	22170 AUD pp

Main Deck B	12990 AUD pp
Main Deck A	13700 AUD pp
Promenade A	16400 AUD pp
Bridge Deck Balcony	20400 AUD pp

### 19-Aug-2025 to 30-Aug-2025

Main Deck B Stateroom	13750 AUD pp
Main Deck A Stateroom	14940 AUD pp
Promenade B Stateroom	16000 AUD pp
Promenade A Stateroom	17840 AUD pp
Bridge Deck Balcony Stateroom	22170 AUD pp

### 05-Oct-2025 to 16-Oct-2025

CORAL DECK STATEROOM	13380 AUD pp
PROMENADE DECK STATEROOM	16060 AUD pp
EXPLORER DECK BALCONY STATEROOM	21410 AUD pp
BRIDGE DECK BALCONY STATEROOM	23580 AUD pp
BRIDGE DECK BALCONY SUITE	28830 AUD pp

### 28-Mar-2026 to 08-Apr-2026

Main Deck B	12990 AUD pp
Main Deck A	13700 AUD pp
Promenade A	16400 AUD pp
Bridge Deck Balcony	20400 AUD pp

### 21-Sep-2026 to 02-Oct-2026

Wild Earth Travel  
*Small Ships, Big Adventures*

**0800 945 3327** (within New Zealand) | +64 (0) 3 365 1355 | **1800 107 715** (within Australia)

info@wildearth-travel.com | wildearth-travel.com