

Wild Earth Travel

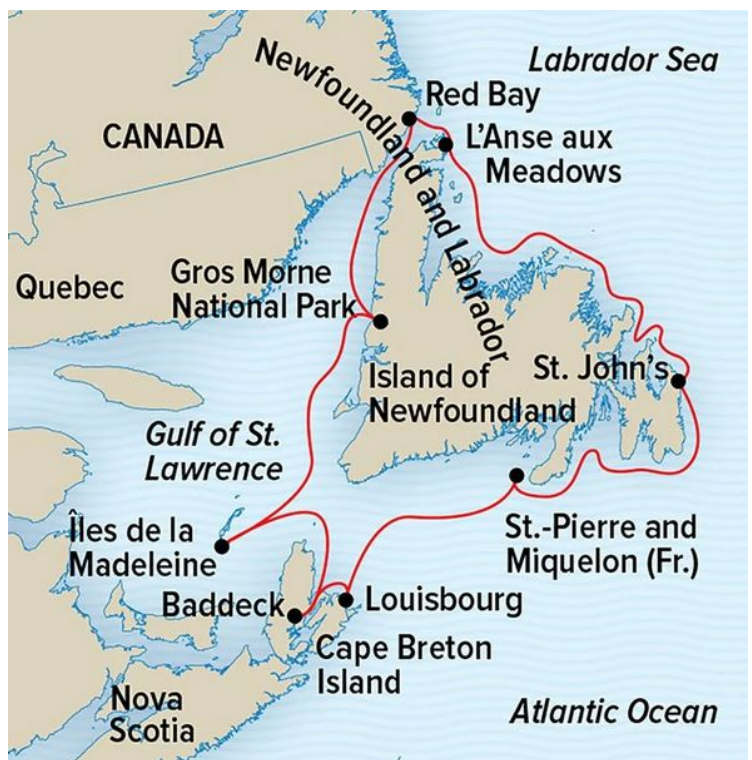
Small Ships, Big Adventures

wildearth-travel.com

info@wildearth-travel.com

THE CANADIAN MARITIMES AND NEWFOUNDLAND

Embark on a satisfying circumnavigation of Newfoundland aboard National Geographic Explorer and sail into Eastern Canada's breathtaking natural beauty. Discover the astonishing Viking past at L'Anse aux Meadows, the only widely accepted site of trans-Atlantic Viking establishment and very early Norse exploration. See WWII harbor defenses and visit the only North American island that remains under French control, an outpost of its era as a colonial superpower. Your journey of pure discovery ventures to the legendary islands of Cape Breton, St. Pierre, and the Îles de la Madeleine. Discover sweeping dunes, wind-and wave-carved cliffs, and sandstone hills in a wild land.



ITINERARY

DAY 1: St. John's, Newfoundland and Labrador, Canada / Embark

Arrive in St. John's, the picturesque capital city of Newfoundland and Labrador. Settle into National Geographic Explorer. (D)

DAY 2: St-Pierre, France

Wild Earth Travel

Small Ships, Big Adventures

0800 945 3327 (within New Zealand) | +64 (0) 3 365 1355 | **1800 107 715** (within Australia)

info@wildearth-travel.com | wildearth-travel.com



Wild Earth Travel

Small Ships, Big Adventures

wildearth-travel.com

info@wildearth-travel.com

Our first landfall is St-Pierre, France's oldest remaining overseas territory. Explore this picturesque French fishing enclave where we visit a local island to learn the importance of the historic cod fisheries and explore the fascinating L'Arche Museum. (B,L,D)

DAY 3: Louisbourg & Baddeck, Cape Breton Island, Nova Scotia

Today we visit the reconstructed Fortress of Louisbourg, an 18th-century fort where the British and French fought. Later, we visit the village of Baddeck, where Alexander Graham Bell built his summer home, now the centerpiece of a beautiful park and museum. Explore the life of Bell and enjoy a tour of the Bell Museum to view historic artifacts. (B,L,D)

DAY 4: Iles De La Madeleine, Quebec

A cluster of wispy islands isolated in the Gulf of St. Lawrence, the Iles de la Madeleine are home to miles of dunes, grassy hills, and dazzling red sandstone cliffs. Local experts will guide us across this landscape of caves and sea arches, stopping along the way in colorful fishing villages as we learn about Acadian culture. (B,L,D)

DAY 5: Exploring the Gulf of St. Lawrence

This is a day of exploration where our expedition team will look for the best opportunities to focus on the natural history and landscapes of the region. (B,L,D)

DAY 6: Gros Morne National Park

Graced by cliffs, fjords, and a sweeping alpine plateau, Gros Morne National Park has been designated a UNESCO World Heritage site for its spectacular geology. Go on a variety of walks with our naturalists along waterfalls, marine inlets, and forested trails. Learn about the forces that shaped this land and the ancient serpentine rock that illustrates the phenomenon of plate tectonics. (B,L,D)

DAY 7: Red Bay

Today we explore Red Bay, the site of a historic Basque whaling station dating back to the 1500s. See original Basque remains and artifacts at this National Historic Site or take a scenic hike to a viewpoint overlooking the small village. (B,L,D)

DAY 8: L'Anse aux Meadows

In the World Heritage site of L'Anse aux Meadows, walk among 11th-century Norse ruins and reconstructed sod huts and learn the saga of the Vikings in North America--nearly 500 years before Columbus arrived. (B,L,D)

DAY 9: Exploring Eastern Newfoundland

Wild, rugged, and often accessible only by sea, Newfoundland's east coast is dotted with tiny fishing villages tucked into coves. Explore these stunning shores, and back aboard, you'll gain insights from our experts into the island's people and wildlife. (B,L,D)

DAY 10: St. John's / Disembark / Home

Sail through The Narrows in the early morning and disembark in St. John's. Visit the colorful waterfront and historic Signal Hill or The Rooms Museum before you transfer to the airport for your flight home. (B)

Please Note:

Itineraries are subject to change.

Wild Earth Travel

Small Ships, Big Adventures

0800 945 3327 (within New Zealand) | +64 (0) 3 365 1355 | **1800 107 715** (within Australia)

info@wildearth-travel.com | **wildearth-travel.com**



Wild Earth Travel

Small Ships, Big Adventures

wildearth-travel.com

info@wildearth-travel.com

YOUR SHIP: NATIONAL GEOGRAPHIC EXPLORER

YOUR SHIP:	National Geographic Explorer
VESSEL TYPE:	Luxury Expedition
LENGTH:	108 meters
PASSENGER CAPACITY:	148 (single & twin cabins)
BUILT/REFURBISHED:	1982 / 2008

National Geographic Explorer is a state-of-the-art expedition ship. It is a fully stabilized, ice-class vessel, enabling it to navigate polar passages while providing exceptional comfort. It carries kayaks and a fleet of Zodiac landing craft. An Undersea Specialist operates a remotely operated vehicle (ROV) and sophisticated video equipment, extending access to the underwater world.

Public areas : Bistro Bar; Chart Room; Restaurant; Global Gallery; Library, Lounge with full service bar and state-of-the-art facilities for films, slideshows and presentations; Mud Room with lockers for expedition gear, and Observation Lounge. Our "Open Bridge" provides guests an opportunity to meet our Officers and Captain and learn about navigation.

Meals : Served in single seatings with unassigned tables for an informal atmosphere and easy mingling. Menu is international with local flair.

Cabins : A New Look for National Geographic Explorer Suites
National Geographic Explorer recently debuted updated suites, enhanced with the sleek, Scandinavian design that has become the hallmark of our polar fleet. Each of these elegant cabins now holds a Command Center, which allows guests to continue to

explore from the comfort of their suites with a set of tools that includes a barometer, a National Geographic Atlas, a television that broadcasts entertainment and ship navigation, a coffee maker, and multiple USB and universal electric ports for cameras and other devices. 81 outside cabins

All feature windows or portholes, private facilities, climate controls, hair dryers, and TV, plus Ethernet, Wi-Fi connections, and USB ports for mobile devices. Some cabins have balconies. Single cabins in Category SA and Category SB are located on the main deck and upper deck.

Expedition Equipment : Zodiac landing craft, kayaks, Remotely Operated Vehicle (ROV), hydrophone, SplashCam, underwater video camera, Crow's Nest remote controlled camera, video microscope, snorkeling gear.

Special Features : A full-time doctor, Undersea Specialist, LEX Photo Specialist and Video Chronicler, Internet Cafe and laundry.

Wellness: The vessel is staffed by two Wellness Specialists and features a glass enclosed Fitness Center, outdoor stretching area, two LEXspa treatment rooms and Sauna.



Wild Earth Travel

Small Ships, Big Adventures

0800 945 3327 (within New Zealand) | +64 (0) 3 365 1355 | **1800 107 715** (within Australia)

info@wildearth-travel.com | **wildearth-travel.com**



Wild Earth Travel

Small Ships, Big Adventures

wildearth-travel.com

info@wildearth-travel.com



and Sauna.

Wild Earth Travel

Small Ships, Big Adventures

0800 945 3327 (within New Zealand) | +64 (0) 3 365 1355 | **1800 107 715** (within Australia)

info@wildearth-travel.com | **wildearth-travel.com**

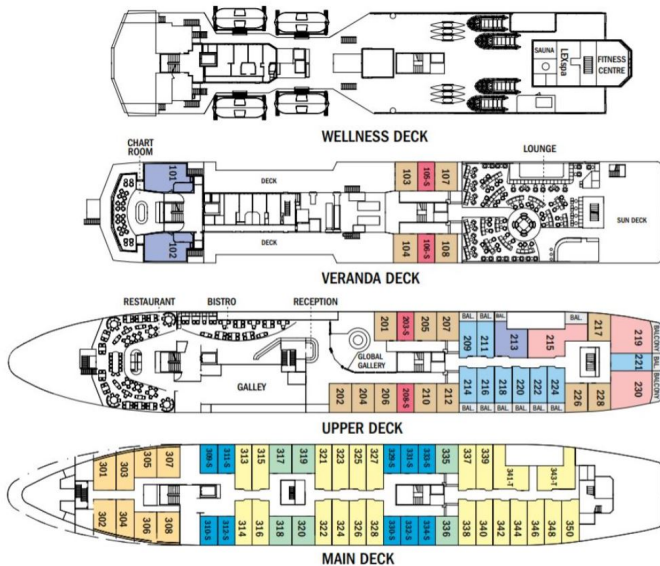
Wild Earth Travel

Small Ships, Big Adventures

wildearth-travel.com

info@wildearth-travel.com

INSIDE YOUR SHIP



Category 1



Category 2



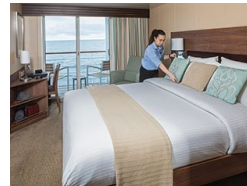
Category 3



Category 4



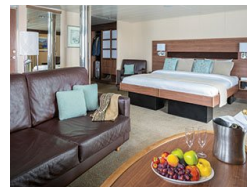
Category 5



Category 6



Category 7



Category SA (solo)



Wild Earth Travel

Small Ships, Big Adventures

0800 945 3327 (within New Zealand) | +64 (0) 3 365 1355 | 1800 107 715 (within Australia)

info@wildearth-travel.com | wildearth-travel.com



Wild Earth Travel

Small Ships, Big Adventures

wildearth-travel.com

info@wildearth-travel.com

PRICING

31-Aug-2025 to 08-Sep-2025

Category 1	14730 AUD pp
Category 2	15840 AUD pp
Category 3	16490 AUD pp
Category 4	17460 AUD pp
Category SA (solo)	19580 AUD pp
Category SB (solo)	20500 AUD pp
Category 5	20570 AUD pp
Category 6	23510 AUD pp
Category 7	27930 AUD pp

09-Sep-2025 to 17-Sep-2025

Category 1	13860 AUD pp
Category 2	14910 AUD pp
Category 3	15520 AUD pp
Category 4	16440 AUD pp
Category SA (solo)	18450 AUD pp
Category SB (solo)	19320 AUD pp
Category 5	19380 AUD pp
Category 6	22160 AUD pp
Category 7	26310 AUD pp



Wild Earth Travel
Small Ships, Big Adventures

0800 945 3327 (within New Zealand) | +64 (0) 3 365 1355 | **1800 107 715** (within Australia)

info@wildearth-travel.com | **wildearth-travel.com**



Wild Earth Travel

Small Ships, Big Adventures

wildearth-travel.com

info@wildearth-travel.com

SPECIAL OFFERS

****SUITE EXCLUSIVES****

Spacious living areas and incredible views immerse you in the beauty of your marine surroundings. Our new Suite Exclusives package helps make your voyage all the more memorable.

****BAR TAB & CREW TIPS INCLUDED****

Your bar tab and tips to the ship's crew on all departures aboard National Geographic Endurance, National Geographic Resolution, National Geographic Orion, National Geographic Explorer, Sea Cloud, and Sea Cloud II are included in your fare. Bar tab excludes certain super premium brands, which are available for sale. Call for details.

****10% OFF BACK-TO-BACK VOYAGES****

Save 10% on consecutive departures, applicable on voyage fares only and not valid on extensions or airfare. Valid for new bookings only, subject to availability, and may not be combined with other offers. Call for details.

****SAVE 5% TRAVELING AS A GROUP****

Save 5% when traveling as a group of eight or more people. Valid on voyage fares only and not applicable on extensions or airfare. Deposit, final payments, and cancellation policies for group travel vary from our regular policies. Valid for new bookings only, subject to availability, and may not be combined with other offers. Call for details.

****CELEBRATE LIFE'S MILESTONES****

Celebrate a milestone with a group of eight or more and enjoy a special amenity package including: 5% savings on voyage fares, custom group photo, US\$150 shipboard credit for the group, and other special gifts. Milestone celebration to be communicated at time of booking. Valid for new bookings only on select departures, subject to availability, not applicable on airfare or extensions, and may not be combined with other offers. Deposit, final payments, and cancellation policies for group travel vary from our regular policies. Call for details.

****BRINGING THE KIDS****

We believe sharing an expedition with your kids or grandkids is a life-enhancing experience. So take \$625 off for each child under the age of 18.

****COMBINING OFFERS****

Combine now and save!

Certain offers may be combinable, up to two savings opportunities, except where noted otherwise. For example, travel with a group of 8 or more on back-to-back expeditions, and take advantage of both savings.

Optional extras & upgrades



Wild Earth Travel

Small Ships, Big Adventures

0800 945 3327 (within New Zealand) | +64 (0) 3 365 1355 | **1800 107 715** (within Australia)

info@wildearth-travel.com | **wildearth-travel.com**



Wild Earth Travel

Small Ships, Big Adventures

wildearth-travel.com

info@wildearth-travel.com

Fogo Island Inn Post-Voyage Extension 8740 AUD

Cap off your coastal exploration of Canada on this island at the ends of the earth. Fogo Island Inn is located off the coast of Newfoundland at the furthest eastern reach of Canada. Experience the inn and its soulful surroundings over the course of several days—savor superb meals featuring local ingredients, call in on the island's artist-in-residence program, take in the untamed wilderness on a berry-picking excursion, and get acquainted with the infectious hospitality of this remote outpost community. Post Trip - 5 days

Wild Earth Travel

Small Ships, Big Adventures

0800 945 3327 (within New Zealand) | +64 (0) 3 365 1355 | **1800 107 715** (within Australia)

info@wildearth-travel.com | **wildearth-travel.com**