



Wild Earth Travel

Small Ships, Big Adventures

wildearth-travel.com

info@wildearth-travel.com

BODRUM TO BODRUM TURKEY GULET CRUISE

Departing and ending in Bodrum, this itinerary is a fantastic way to explore the stunning Turkish Riviera, providing opportunities to experience the sights otherwise not so easily accessed.

This gulet cruise includes stops at historic sites and charming towns, allowing you to immerse yourself in Turkish culture and history. We will stop in some beautiful bays for swimming and snorkeling; We will visit the small but very picturesque village of Bozburnum and the ancient city of Knidos, located on a narrow peninsula where the Aegean and Mediterranean seas meet - a great place for history enthusiasts and offers beautiful views, especially at sunset. We will also visit the scenic Datca Peninsula, famous for its breathtaking landscapes, rocky outcrops, and turquoise waters. It's a perfect spot for relaxation and exploration.

We will sail to the picturesque Gulf of Hisaronu, where you'll find stunning bays, charming villages like Selimiye and Orhaniye, and plenty of opportunities for swimming and snorkelling.

You can enjoy a variety of activities such as swimming, snorkeling, kayaking, and hiking, while also relaxing on the deck with beautiful views. Whether you decide to explore or stay aboard and just relax, one of the best things about gulet voyages is the freedom to enjoy the different options and experiences available during the week..

the week..

ITINERARY

Day 1 - Bodrum

Your cruise begins in the vibrant city of Bodrum. We will begin boarding at 4 pm, leaving you plenty of time to explore the city. Visit one of the oldest amphitheatres in Bodrum that is still used for concerts or see the Castle of Saint Peter with the world's largest underwater archaeology museum. Dinner will be served on the gulet. We will spend the night at Karaada bay or Orak bay.

Day 2 - Palamutbuku to Ince Burun

Following breakfast, we will cruise to Palamutbuku Bay. The day will include breathtaking views of the Turquoise Coast and lots of swimming stops. In the afternoon we will anchor at Ince Burun for the night. Here you can watch the beautiful sunset over Ince Burun.

Day 3 - Ince Burun to Bencik Bay

Today, after breakfast, we will cruise onto Aktur Bay, where you can swim to the long sandy beach of Aktur. Here we will have lunch before cruising to Bencik Bay, which is located at the narrowest part of the peninsula that divides Hisaronu Gulf from the Gokova Gulf. Chill out here and settle in for the night while we prepare dinner.

Day 4 - Bencik Bay to Selimiye

After breakfast, we will anchor at Emel Sayin Bay for a swimming stop. Lunch will be enjoyed at Orhaniye among the unique scenery, including the natural tidal formation called 'Kiz Kumu' (Maiden's Beach). Take the sand path that begins at the shoreline to a tiny island in the bay that has ruins of an ancient castle. Tonight, we will drop anchor at Selimiye.

Day 5 - Selimiye to Bozburun

Wild Earth Travel

Small Ships, Big Adventures

0800 945 3327 (within New Zealand) | +64 (0) 3 365 1355 | **1800 107 715** (within Australia)

info@wildearth-travel.com | **wildearth-travel.com**



Wild Earth Travel

Small Ships, Big Adventures

wildearth-travel.com

info@wildearth-travel.com

Wake up and have your morning swim in the beauty and tranquillity of Selimye Bay. We will have a late breakfast and relax before the day of cruising. Our first stop is Dirsekbuku, a great place to swim, lay back and relax. In the late afternoon, we will go to Bozburun, a small fishing village that is naturally beautiful and known for its exceptional flora.

Day 6 – Bozburun to Cnidus (Knidos)

Today we head for Datca, which was founded by the Dorians in the 7th century BC. The island has no humidity and has a light, cool breeze all year round. You can walk through Datca or even catch a dolmus (small local bus) to the old town to admire the old stone houses. After Datca, we will cruise to Cnidus (Knidos), where you can walk along the shore and see the ruins of the old city. We will have dinner here and stay overnight.

Day 7 – Cnidus to Bodrum

Early this morning to we will cruise to Kara Ada (Black Island) for a quick swim before continuing to Poyraz Bay for breakfast. The clear water here is ideal for snorkelling. After breakfast, we will cruise to Meteor Bay, which is at the southern side of the island. You can jump over the platform into the deep water of the meteor hole after which the bay is named or walk through the nearby underwater cave. We will dock in Bodrum Harbour for dinner and an overnight stay.

Day 8 – Bodrum

This morning, we will say goodbye after breakfast at approximately 9.00 am and check out of the gulet.

Please note:

Itineraries are subject to change.

Wild Earth Travel

Small Ships, Big Adventures

0800 945 3327 (within New Zealand) | +64 (0) 3 365 1355 | **1800 107 715** (within Australia)

info@wildearth-travel.com | **wildearth-travel.com**



Wild Earth Travel

Small Ships, Big Adventures

wildearth-travel.com

info@wildearth-travel.com

YOUR SHIP: GULET FORTUNA

YOUR SHIP: Gulet Fortuna

VESSEL TYPE:

LENGTH:

PASSENGER CAPACITY:

BUILT/REFURBISHED:

Our luxury sailing Gulet M/S Fortuna is handcrafted from mahogany and teak and offers spacious fore, side, and aft decks. Its ancient design is complemented by up-to-date nautical equipment, outdoor dining facilities, cushioned lounging areas, sun mattresses, tenting for shade, plus a variety of other contemporary comforts. The elegant interior features high ceilings and wide corridors. The lounge includes a stocked bar, cushioned lounge, and indoor dining space. Accommodation consists of 7 fully air-conditioned cabins - 1 master cabin with a king-sized bed, 4 cabins with queen-sized beds, and 2 cabins with 2 twin beds each. Each cabin has generous storage space and a roomy en suite bathroom with toilet, shower, marble sink, and vanity. The 4 man crew has separate quarters. Capacity 14 Passengers.

Cuisine on board a gulet is a pleasure. A skilled chef, whose expertise ranges from haute cuisine to regional specialties, guarantees satisfaction for even the most discriminating palate. Seafood is served Mediterranean style, and organically grown fresh herbs, vegetables, and fruits of the season ensure the finest flavor.

Swimming off from or just dreamily floating around the yacht is

certainly one of the most enjoyable experiences of your voyage. Additionally, you can sail, water ski, snorkel, kayak, fish, play board games, and cards, or even go on moderate to strenuous hikes with the captain. Other activities such as parasailing, jet skiing, scuba diving, paragliding, and numerous additional water sports (at extra cost) can also be arranged. Naturally, relaxation is a key part of the voyage, and we offer a library of magazines and books to peruse. A DVD library and DVD player are also on board stocked with film classics, children's, and foreign films. The stereo system has indoor and outdoor speakers and iPod connections for even more personalized listening pleasure.

Shore excursions along the Aegean and Mediterranean coasts are fantastic opportunities to experience sights and sites otherwise not so easily accessed. Turkey's Turquoise Coast offers different cultural and extensive outing choices that easily meet individual or group interests. Traditional sleepy villages, authentic local cuisine, sightseeing, shopping, nightlife, and ancient site explorations. Some trips require vehicles, while others are walks or optional hikes. Guides can also be booked or the captain will ably help you explore on your own. Of course, you may also decide to stay aboard and just relax. One of the best sides to luxury yacht (gulet) voyages is the freedom to enjoy your preferences.

Wild Earth Travel

Small Ships, Big Adventures

0800 945 3327 (within New Zealand) | +64 (0) 3 365 1355 | **1800 107 715** (within Australia)

info@wildearth-travel.com | **wildearth-travel.com**



references.

Wild Earth Travel

Small Ships, Big Adventures

wildearth-travel.com

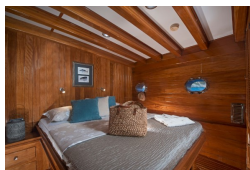
info@wildearth-travel.com

INSIDE YOUR SHIP

Master Cabin



Superior Double Cabin



Superior Twin Cabin



Wild Earth Travel

Small Ships, Big Adventures

0800 945 3327 (within New Zealand) | +64 (0) 3 365 1355 | 1800 107 715 (within Australia)

info@wildearth-travel.com | wildearth-travel.com



Wild Earth Travel

Small Ships, Big Adventures

wildearth-travel.com

info@wildearth-travel.com

PRICING

10-May-2025 to 17-May-2025

Superior Double Cabin	1400 EUR pp
Superior Twin Cabin	1400 EUR pp
Master Cabin	1820 EUR pp

Wild Earth Travel

Small Ships, Big Adventures

0800 945 3327 (within New Zealand) | +64 (0) 3 365 1355 | **1800 107 715** (within Australia)

info@wildearth-travel.com | **wildearth-travel.com**