

# Wild Earth Travel

*Small Ships, Big Adventures*

**wildearth-travel.com**

**info@wildearth-travel.com**

## THE BEST OF JAPAN - FROM OSAKA TO BUSAN LUXURY CRUISE

Ponant has an ideal introduction to this captivating archipelago, inviting you on a timeless journey around the fascinating and surprising Empire of the Rising Sun, where unbridled modernism and ancestral traditions form a delightful blend, where the history of the samurai rubs shoulders with the delicateness of the geisha, and where the aromas of the tea plantations intermingle with the fragrances of cherry blossom. Dive into the heart of ancestral Japan, where each port of call unveils unsuspected treasures and unique moments.

Between temples imbued with spirituality, majestic volcanic landscapes and mystical forests, nature unveils all of its splendour. Fall under the spell of the local handicrafts, the refined flavours of thousand-year-old gastronomy, and a warm welcome that is deeply rooted in tradition. Explore sites steeped in serenity, witnesses to rich and poignant history, where each detail inspires contemplation.



### ITINERARY

#### Day 1 Osaka

Like its big sister Tokyo, Osaka is the product of ancestral traditions and amazing technological innovations. And despite its size, its location on the Pacific Ocean give it a sense of serenity. The main historic landmark is the 16th century Osaka Castle, which stands proud in the midst of majestic skyscrapers. The lively streets of Dotomburi and the bizarre Shinsekai district attract thousands of locals and visitors. A multitude of restaurants offer menus full of regional specialities: takoyaki, made with octopus, and other succulent dishes such as kushikatsu kebabs.

#### Day 2 Tamano

Wild Earth Travel

*Small Ships, Big Adventures*

**0800 945 3327** (within New Zealand) | +64 (0) 3 365 1355 | **1800 107 715** (within Australia)

info@wildearth-travel.com | **wildearth-travel.com**



# Wild Earth Travel

*Small Ships, Big Adventures*

**wildearth-travel.com**

**info@wildearth-travel.com**

Located on the island of Honshu, hugging the banks of the Seto Inland Sea, Tamano is a popular destination thanks to its sun-drenched climate. Upon arrival, marvel at the way in which the city has been built along the coast at the foot of a deep, dark forest. In the area surrounding Tamano, stroll down the streets of Kurashiki, known as the 'white-walled city' in a nod to the pretty façades of the houses that line the streets of this ancient Edo-period trading town. Another major regional attraction is the Seto Ohashi bridge. Its 12.5 kilometres make it the world's longest double-decker bridge.

## Day 3 Miyajima Island & Hiroshima

At the heart of the Inland Sea, Miyajima, the "island sanctuary" will reveal its treasures. In the background you will see the Shinto Grand Sanctuary, whose entrance is guarded by a magnificent vermilion "Tori". Considered to be one of the most beautiful sites in the Japanese islands, you will be transported by the unique character and the serenity of this sacred site.

Visiting Hiroshima is a moving experience. The town spreads along Honshu Island, along the inside coasts of Seto. While firmly focused on the future, Hiroshima doesn't forget its past, and a visit to the Peace Memorial Park and Genbaku Dome is a must. You'll enjoy the city's modern, cosmopolitan atmosphere and effervescent nightlife just as much as the peaceful stillness of its natural parkland areas such as splendid Shukkei-en, the town's historic garden.

## Day 4 Beppu, Oita

A favourite destination for the Japanese, Beppu is now famous throughout the Japanese archipelago thanks to its onsen - volcanic hot springs in which people immerse themselves to relax with family or friends. From Beppu, you will set off to discover a lush, peaceful valley in which sit 60 majestic stone Buddhas carved out of the cliff face between the 12th and 14th centuries. Exuding a soothing air of serenity, the Mangetsuji site seems to have drifted off to sleep in the heart of a dense bamboo forest surrounded by rice fields. Recognised as a National Treasure of Japan, this set of sacred sculptures offers travellers a unique, wonderful experience.

## Day 5 Uwajima

Located on the west coast of Shikoku island, Uwajima will delight lovers of history and traditional customs. The magnificent Uwajima Castle was built in the 17th-century by the powerful Date clan and has a beautiful ornamental garden and bridge. The much-visited Taga Shrine is dedicated to fertility and is full of phalluses. As for eating, you must taste jakoten, a local delicacy based on fried fish.

## Day 6 Miyanoura, Yakushima

Yakushima is a striking island in the South of Japan, covered in forest and listed as a UNESCO World Heritage Site. Hikers are very fond of this destination because of the lush vegetation, Mount Miyanoura, the waterfalls and cascades. But without a doubt, the symbol of the island remains its many age-old cedar trees which is said to have inspired some of the scenes in the animated film Princess Mononoke. On this island, you will also find wildlife including the Japanese macaque, the sika deer, and green sea turtles which lay their eggs on the magnificent sandy beaches here.

## Day 7 Kagoshima

The seaside city of Kagoshima, at the south of Kyushu Island, is best known for Sakurajima, an active volcano that faces Kinko Bay. A visit to this busy metropolis will remind you just how much the volcano is part of the inhabitants' everyday life: in the wake of the almost daily eruptions, a delicate layer of ash settles on everything. The top of a buried torii (traditional Japanese gate) measuring three metres that was 'swallowed up' by a giant lava flow in 1914 can still be seen. The power of nature will send a shiver down your spine.

## Day 8 Nagasaki

Located on the north-west coast of Kyushu, Nagasaki will impress you by its rich heritage. Despite the destruction in 1945, you can visit several ancient sites, including the beautiful 19th-century Catholic Church of Oura and its garden, the sanctuary of Suwa Shrine or several Buddhist temples. A visit to the Atomic Bomb Museum gives you insight into the extent of the damage caused by the nuclear attack. Close by, a walk in the Memorial Peace Park leads you to a collection of objets d'art offered as a gift from Japan to the world.

Wild Earth Travel

*Small Ships, Big Adventures*

**0800 945 3327** (within New Zealand) | +64 (0) 3 365 1355 | **1800 107 715** (within Australia)

info@wildearth-travel.com | wildearth-travel.com



# Wild Earth Travel

*Small Ships, Big Adventures*

**wildearth-travel.com**

**info@wildearth-travel.com**

## Day 9 Busan

With around four million inhabitants, Busan is the second largest metropolis on South Korea, after Seoul. This dynamic harbour city, located in the south-east, surrounded by the warm waters of the Sea of Japan, benefits from a mild, pleasant climate. You'll find delightful simply to stroll around the lively streets and explore the city's outstanding cultural heritage of art galleries, museums, and Buddhist sites, such as the Haedong Yonggungsa temple, which elegantly sits on the waterfront. Rich too in magnificent beaches and superlative natural landscapes, Busan's peaceful atmosphere will win you over, as will its inhabitants, whom you'll have the pleasure of meeting.

### Please Note:

Itineraries are subject to change.

**Wild Earth Travel**

*Small Ships, Big Adventures*

**0800 945 3327** (within New Zealand) | +64 (0) 3 365 1355 | **1800 107 715** (within Australia)

info@wildearth-travel.com | **wildearth-travel.com**



# Wild Earth Travel

*Small Ships, Big Adventures*

**wildearth-travel.com**

**info@wildearth-travel.com**

## YOUR SHIP: LE SOLEAL

<b>YOUR SHIP:</b>	<b>Le Soleal</b>
<b>VESSEL TYPE:</b>	<b>Luxury Small Ship</b>
<b>LENGTH:</b>	<b>142 metres</b>
<b>PASSENGER CAPACITY:</b>	<b>264</b>
<b>BUILT/REFURBISHED:</b>	<b>2013</b>



Sailing under the French flag, this magnificent yacht of only 132 staterooms and suites, with balconies, joined in 2013. You will be enchanted by the contemporary decor inspired by the luxury yachting world, with fluid lines and a modern colour scheme combining natural wood with shades of grey and white.

A refined ambience is enhanced by the quality of the workmanship and materials: white Corian counters in the lobby contrast with the warmth of leather to recall a boat's hull, while the central sculpture of enamelled pieces takes its inspiration from the sea. In the loungebar, the carpet picks up a tennis stripe theme symbolising a certain idea of cruising, one synonymous with French elegance and a chic seaside spirit.

**Wild Earth Travel**

*Small Ships, Big Adventures*

**0800 945 3327** (within New Zealand) | +64 (0) 3 365 1355 | **1800 107 715** (within Australia)

info@wildearth-travel.com | **wildearth-travel.com**

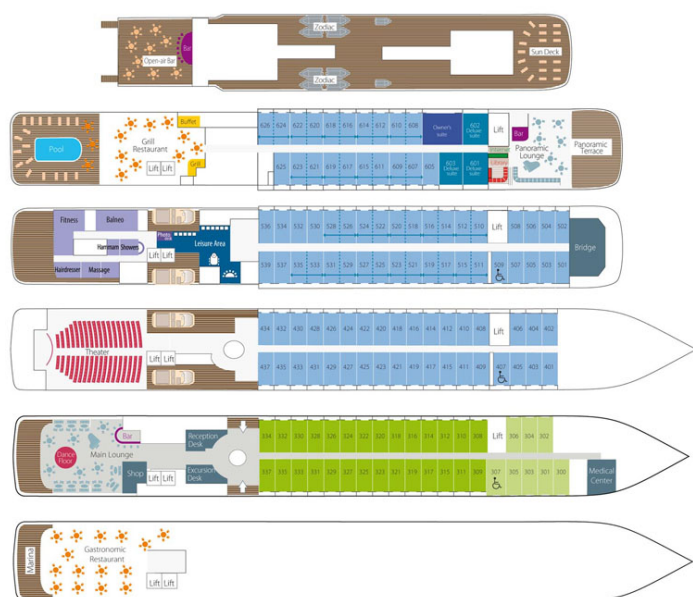
# Wild Earth Travel

*Small Ships, Big Adventures*

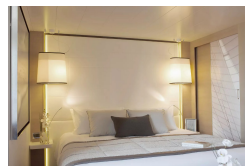
[wildearth-travel.com](http://wildearth-travel.com)

[info@wildearth-travel.com](mailto:info@wildearth-travel.com)

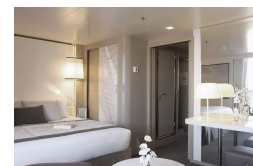
## INSIDE YOUR SHIP



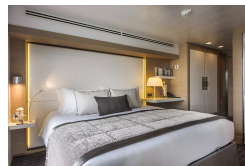
Deluxe Stateroom



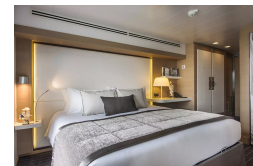
Deluxe Suite



Prestige Deck 4



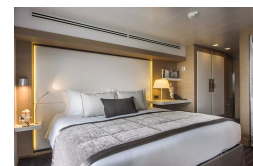
Prestige Deck 5



Prestige Deck 5 Suite



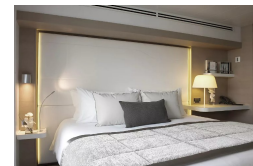
Prestige Deck 6



Prestige Deck 6 Suite



Superior Stateroom



Wild Earth Travel

*Small Ships, Big Adventures*

0800 945 3327 (within New Zealand) | +64 (0) 3 365 1355 | 1800 107 715 (within Australia)

[info@wildearth-travel.com](mailto:info@wildearth-travel.com) | [wildearth-travel.com](http://wildearth-travel.com)

# Wild Earth Travel

*Small Ships, Big Adventures*

**wildearth-travel.com**

**info@wildearth-travel.com**

## PRICING

### 16-Mar-2026 to 24-Mar-2026

Superior Stateroom	11210 AUD pp
Deluxe Stateroom	12150 AUD pp
Prestige Deck 4	13490 AUD pp
Prestige Deck 5	14170 AUD pp
Prestige Deck 6	14970 AUD pp
Deluxe Suite	20870 AUD pp
Prestige Deck 5 Suite	28260 AUD pp
Prestige Deck 6 Suite	29730 AUD pp

### 09-May-2027 to 17-May-2027

Superior Stateroom	10750 AUD pp
Deluxe Stateroom	11650 AUD pp
Prestige Deck 4	12930 AUD pp
Prestige Deck 5	13570 AUD pp
Prestige Deck 6	14350 AUD pp
Deluxe Suite	19990 AUD pp
Prestige Deck 5 Suite	27050 AUD pp
Prestige Deck 6 Suite	28450 AUD pp





# Wild Earth Travel

*Small Ships, Big Adventures*

**wildearth-travel.com**

**info@wildearth-travel.com**

## SPECIAL OFFERS

Online prices reflect the current brochure fare savings of up to 30%. Prices may change based on demand. Terms and conditions apply. This special offer is subject to availability. Please contact us for more details.

Wild Earth Travel

*Small Ships, Big Adventures*

**0800 945 3327** (within New Zealand) | +64 (0) 3 365 1355 | **1800 107 715** (within Australia)

info@wildearth-travel.com | **wildearth-travel.com**