



# Wild Earth Travel

*Small Ships, Big Adventures*

**wildearth-travel.com**

**info@wildearth-travel.com**

## BAY OF BISCAY & IBERIAN PENINSULA - PORTUGAL, SPAIN & FRANCE IN LUXURY

From Bordeaux to Lisbon, PONANT invites you on a brand-new cruise along the shores of the Atlantic to discover the French, Spanish and Portuguese coasts. Enjoy a different experience of the Atlantic Ocean during an 11-day trip aboard *Le Lapereuse*.

Throughout your journey, you will benefit from an excursion included per person per port of call, to choose from a selection offered by PONANT. During this cruise, follow the Medoc region's famous "Route des Châteaux" from Pauillac, admire the historic city of Santillana del Mar from Santander, from Santander or hike the final kilometres of the Camino de Santiago (the Way of St. James) from Vigo. The diversity of experiences on offer promises you intense and varied moments (to discover the full range of excursions, go to the itinerary tab). The diversity of experiences on offer promises you intense and varied moments (to discover the full range of excursions, go to the itinerary tab).

The ship will set sail from Bordeaux, considered the wine capital of the world, to reach your first port of call, Pauillac. Here, several visits and wine tastings at some beautiful wine estates in the Saint-Estèphe, Margaux and Pauillac appellations will enable you to explore the region in the best possible way.

After a stop in the beautiful fortified town of Talmont-sur-Gironde, you will set sail for the Basque coast and Saint-Jean-de-Luz, an authentic fishing port with charming half-timbered houses.

You will then cruise to Santander and its dazzling bay,

considered one of the most beautiful in the Bay of Biscay. You will fall in love with the timeless charm of this coastal city with a rich maritime heritage.

*Le Lapereuse* will continue its exploration of the Northern Spanish coast until it reaches Avilés. The town is an ode to the beauty of Asturias, offering unspoilt nature, a history spanning centuries, and contemporary artistic creation.

Your ship will then set a course for Corruña, a trading port with a history extending all the way back to antiquity. This Galician city will captivate you with its stories and architectural gems, including the legendary Tower of Hercules: a Roman lighthouse declared a World Heritage Site by UNESCO.

Your journey will continue to the city of Vigo, the biggest fishing port in Spain. Not far from here, Santiago de Compostela awaits you. This unmissable pilgrimage destination is home to a number of monuments from the Romanesque, Gothic and Baroque periods, testimony to its illustrious past.

Leixões will be the next stop on your cruise. From there, you will have the opportunity to visit Porto. Capital of the northern region of Portugal, this 'city of granite', the centre of which is a UNESCO World Heritage site, is renowned for its wine.

In Figueira da Foz, at the mouth of the Mondego River, you will love the slow pace of this historic seaside resort and its beaches of white sand.

Wild Earth Travel

*Small Ships, Big Adventures*

**0800 945 3327** (within New Zealand) | +64 (0) 3 365 1355 | **1800 107 715** (within Australia)

info@wildearth-travel.com | **wildearth-travel.com**

# Wild Earth Travel

*Small Ships, Big Adventures*

[wildearth-travel.com](http://wildearth-travel.com)

[info@wildearth-travel.com](mailto:info@wildearth-travel.com)

## Day 2 - Pauillac

Your cruise will come to an end in Lisbon, sitting on the Tagus River, distilling its one-of-a-kind charm imbued with rich history.



Discover Pauillac, a town in southwestern France located a few kilometres away from Bordeaux, stretching along the Gironde. The undisputed capital of Medoc, Pauillac will open up its magical universe for you, from culture and heritage to vineyards and chateaux. This stop will be a voyage of myriad flavours, particularly during the tasting of the region's wines, revealing their soft ruby colours and reflections turning amber with time. Enjoy both a sensorial adventure and an adventure into the heart of the town. Don't miss the visit of Saint Martin's Church or the mysterious grotto of Artigues, dominated by a statue of the Virgin Mary. As for the Aspic Tower, it is topped with a dome from which the harvesters' work used to be overseen.

## Day 3 - Talmont-sur-Gironde

You will sail along the coast to discover the remarkable Meschers caves, natural cavities carved into the chalk cliffs that loom over the Gironde estuary. Enlarged by man in the 19th century, they became troglodyte dwellings, some of which are still inhabited today. Punctuating the coastline of the Charente region with their poetic presence, the carrelets, fragile-looking huts on stilts fitted with a square fishing net, can be seen along the Saintonge coastline. The beautiful town of Talmont-sur-Gironde is to be found at the heart of the fortified city founded by Edward I, King of England and Duke of Aquitaine. The Sainte-Radegonde church, a jewel of Romanesque art, dating from the 12th century, looms majestically over the estuary.

## Day 4 - Saint-Jean-de-Luz

A renowned seaside resort in the South West of France, Saint-Jean-de-Luz is a picturesque and authentic town with a rich history. In particular, King Louis XIV married Maria Teresa in the famous Saint Jean the Baptist church in 1660. The seafront unveils stunning views, between the Basque architecture and the Cantabrian Sea. An unforgettable bay, which was frequented in the 17th century by privateers and wealthy ship-owners.

ch history.

## ITINERARY

### Day 1 - Bordeaux

Bordeaux stretches along the banks of the Garonne river, in South-West France. Its rich wine tradition makes it the world capital of wine. Let yourself be carried away by the history of the Port de la Lune, made a UNESCO World Heritage site for its prestigious classical architecture. On the famous Place de la Bourse, the past and the present unite: here you can observe the majestic old buildings reflected in the contemporary Miroir d'eau creation.

Wild Earth Travel

*Small Ships, Big Adventures*

0800 945 3327 (within New Zealand) | +64 (0) 3 365 1355 | 1800 107 715 (within Australia)

[info@wildearth-travel.com](mailto:info@wildearth-travel.com) | [wildearth-travel.com](http://wildearth-travel.com)





# Wild Earth Travel

*Small Ships, Big Adventures*

**wildearth-travel.com**

**info@wildearth-travel.com**

## Day 5 - Santander

Facing the Bay of Biscay, its backdrop a natural setting that combines sea and mountain, Santander rolls out along a huge bay on the northern coast of the peninsula. A city of maritime tradition, it has a century-old touristic vocation. It is home to two treasures that are UNESCO World Heritage Sites: a part of the Way of Saint James and the Cave of Altamira. Its Prehistory and Archaeology Museum houses one of the most valuable Palaeolithic collections in Europe and the Maritime Museum of Cantabria is one of the most comprehensive museums in Spain dedicated to the sea. Its beaches with peaceful waters, protected from the wind, offer one of the most beautiful sea fronts with a succession of Belle Époque buildings.

## Day 6 - Aviles

## Day 7 - La Coruña

La Coruña stands on a peninsula in north-west Spain. As you enter the harbour, you can see the imposing Castillo de San Anton, which houses archaeological collections from Galicia. In the old town, you'll travel back in time as you meander through the streets from the medieval church of Santiago to the contemporary Domus building, a museum dedicated to human biology and psychology. Brightly coloured tramways connect to the waterfront, on one side, Riazor beach, and on the other, the Hercules tower: this lighthouse overlooking the Atlantic, is a UNESCO World Heritage site, listed for its history dating back to Antiquity.

## Day 8 - Vigo - Santiago de Compostela

Nestling on the Atlantic coast, in the south of Galicia, the former fishing port of Vigo is now the region's largest municipality. Its old town, more commonly known as O Berbes, will unveil its many historical monuments and the unusual architectural style of its homes. Off the coast, the Cies Islands, declared a Nature Reserve and located in the Atlantic Islands of Galicia National Park, offer truly splendid landscapes and exceptional biodiversity. Further north,

make sure you visit Santiago de Compostela, which welcomes many pilgrims from all over the world every year. Designated a UNESCO World Heritage Site, its historical centre has significant architectural heritage.

## Day 9 - Leixões - Porto

Located at the mouth of the Douro River, the port of Leixoes lies less than 10 kilometres from Porto. A UNESCO World Heritage Site, the historic centre of Porto is worth a visit for its famous Ribeira district, the metallic silhouette of the Dom-Luis bridge looming over its ancient houses, its richly decorated Baroque churches and its national Soares dos Reis museum. The Sao Bento station is also interesting for its typically Portuguese decoration, using Azulejos, blue square ceramic tiles decorated with geometric patterns or figurative scenes.

## Day 10 - Figueira da Foz

## Day 11 - Lisbon

Portugal's capital city located on the banks of the Tagus, only a few kilometres from the Atlantic coast, is a city of exceptionally rich cultural diversity. At the mouth of the river harbour, impose two UNESCO World Heritage monuments, Jeronimos monastery and Belem tower. The Alfama hillside is also worth visiting: known for its fado bars and its Moorish streets, this district is the oldest one of the city and one of the most typical. Not far from there, Chiado's elegant streets are home to big fashion labels and are an invitation to a bit of luxury shopping.

### Please note:

Itineraries are subject to change.

**Wild Earth Travel**

*Small Ships, Big Adventures*

**0800 945 3327** (within New Zealand) | +64 (0) 3 365 1355 | **1800 107 715** (within Australia)

info@wildearth-travel.com | **wildearth-travel.com**



# Wild Earth Travel

*Small Ships, Big Adventures*

**wildearth-travel.com**

**info@wildearth-travel.com**

## YOUR SHIP: LE LAPEROUSE

<b>YOUR SHIP:</b>	<b>Le Laperouse</b>
<b>VESSEL TYPE:</b>	<b>Luxury</b>
<b>LENGTH:</b>	<b>127 metres</b>
<b>PASSENGER CAPACITY:</b>	<b>92 cabins</b>
<b>BUILT/REFURBISHED:</b>	<b>2017/2018</b>

Featuring innovative and environmentally-friendly equipment, elegantly designed cabins, spacious suites with large windows, and lounge areas that open onto the outside, this new limited-capacity yacht boasting just 92 cabins and suites will offer you a truly unique cruising experience.

Aboard this ship that flies the French flag, you will experience the incomparable pleasure of an intimate cruise, with the possibility of exploring an ever-increasing range of destinations in an ethnic-chic ambiance with luxury service.

Experience a luxurious setting where the accent is on authenticity and passion for travel.

### RESTAURANTS

As it is an essential part of French culture, gastronomy will naturally have pride of place aboard this new ship. Through its two restaurants, Le Laperouse will invite you on a journey to elegance and epicureanism.

In a relaxed atmosphere, a first dining area located on Deck 3 and able to seat 70 will serve grilled meats daily, along with a variety of salads and desserts.

To the back of Deck 4, you will find a 260 m<sup>2</sup> panoramic restaurant which can accommodate all of our passengers in a

single sitting. Designed differently to that on our other ships, this dining area, which opens onto the outside, will have a buffet of salads, desserts and cheeses at your disposal. Our discreet and attentive crew will provide table service for hot meals.

### PUBLIC AREAS

Like Le Boreal and its sisterships, Le Laperouse has many common areas that are designed and equipped to meet all of your needs while preserving the intimacy of each passenger.

A 140 m<sup>2</sup> reception area includes: A reception/concierge desk, An excursions desk, The ship's administrative services, The sales office, manned by our Guest Relations Officer, Our 50 m<sup>2</sup> boutique which sells clothing, jewellery, beauty products, postcards and various accessories, Toilets accessible to passengers with reduced mobility.

A new hydraulic platform with adjustable height provides: Easier boarding than on any other cruise ship, Easier Zodiac embarkation and disembarkation for expeditions, Easier access to the sea for swimming and practising various water sports such as kayaking or paddle-boarding.

A pool deck offering: A pool with a panoramic view, equipped with a counter-current swimming system, A pleasant solarium, An outdoor bar and lounge with armchairs and sofas.

A 200 m<sup>2</sup> main lounge which can accommodate all of our passengers to share convivial moments and to host activities organised during the day or evening.

Lastly, a theatre that seats 188, equipped with: The latest sound and lighting technology, A LED wall as the stage backdrop, for the projection of high-resolution images and videos.

Wild Earth Travel

*Small Ships, Big Adventures*

**0800 945 3327** (within New Zealand) | +64 (0) 3 365 1355 | **1800 107 715** (within Australia)

info@wildearth-travel.com | wildearth-travel.com





# Wild Earth Travel

*Small Ships, Big Adventures*

**wildearth-travel.com**

**info@wildearth-travel.com**



and videos.



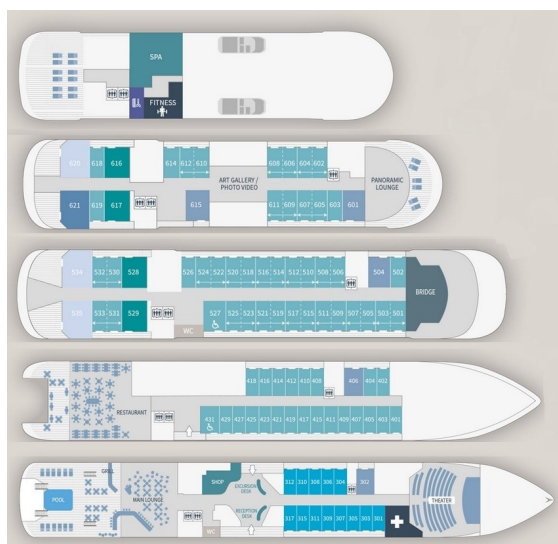
## Wild Earth Travel

*Small Ships, Big Adventures*

**0800 945 3327** (within New Zealand) | +64 (0) 3 365 1355 | **1800 107 715** (within Australia)

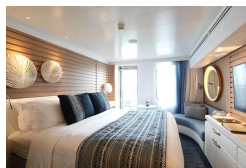
info@wildearth-travel.com | **wildearth-travel.com**

## INSIDE YOUR SHIP

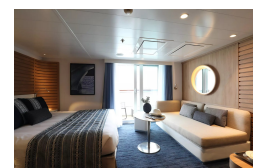


- Owner's Suite Deck 6
- Privilege Suites Deck 5-6
- Grand Deluxe Suites Deck 5-6
- Prestige Suites Deck 5-6
- Deluxe Suites Deck 5-6
- Prestige Cabins Deck 4-5-6
- Deluxe Cabins Deck 3

Deluxe Stateroom



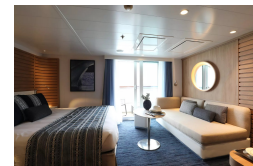
Deluxe Suite Deck 3



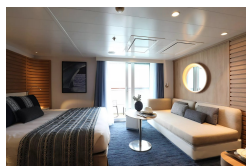
Deluxe Suite Deck 4



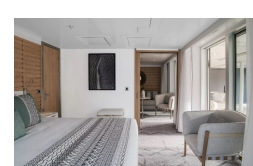
Deluxe Suite Deck 5



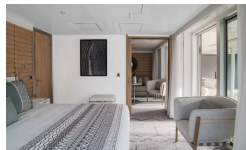
Deluxe Suite Deck 6



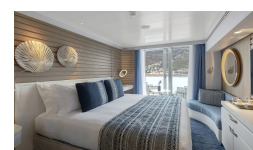
Grand Deluxe Suite Deck 5



Grand Deluxe Suite Deck 6



Prestige Deck 4







# Wild Earth Travel

*Small Ships, Big Adventures*

**wildearth-travel.com**

**info@wildearth-travel.com**

## PRICING

**02-Oct-2026 to 12-Oct-2026**

<b>Deluxe Stateroom</b>	<b>8240 AUD pp</b>
<b>Prestige Deck 4</b>	<b>9140 AUD pp</b>
<b>Prestige Deck 5</b>	<b>9590 AUD pp</b>
<b>Prestige Deck 6</b>	<b>10130 AUD pp</b>
<b>Deluxe Suite Deck 3</b>	<b>14090 AUD pp</b>
<b>Deluxe Suite Deck 4</b>	<b>14090 AUD pp</b>
<b>Deluxe Suite Deck 5</b>	<b>14090 AUD pp</b>
<b>Deluxe Suite Deck 6</b>	<b>14090 AUD pp</b>
<b>Prestige Deck 5 Suite</b>	<b>19050 AUD pp</b>
<b>Prestige Deck 6 Suite</b>	<b>20030 AUD pp</b>
<b>Privilege Suite Deck 6</b>	<b>21030 AUD pp</b>
<b>Privilege Suite Deck 5</b>	<b>21030 AUD pp</b>
<b>Grand Deluxe Suite Deck 5</b>	<b>23100 AUD pp</b>
<b>Grand Deluxe Suite Deck 6</b>	<b>23100 AUD pp</b>



Wild Earth Travel  
*Small Ships, Big Adventures*

**0800 945 3327** (within New Zealand) | +64 (0) 3 365 1355 | **1800 107 715** (within Australia)

info@wildearth-travel.com | **wildearth-travel.com**



# Wild Earth Travel

*Small Ships, Big Adventures*

**wildearth-travel.com**

**info@wildearth-travel.com**

## SPECIAL OFFERS

Online prices reflect the current brochure fare savings of up to 30%. Prices may change based on demand. Terms and conditions apply. This special offer is subject to availability. Please contact us for more details.

Wild Earth Travel

*Small Ships, Big Adventures*

**0800 945 3327** (within New Zealand) | +64 (0) 3 365 1355 | **1800 107 715** (within Australia)

info@wildearth-travel.com | **wildearth-travel.com**