



BAFFIN ISLAND AND GREENLAND: CIRCLING THE MIDNIGHT SUN ADVENTURE CRUISE 2025

Embark on an extraordinary journey through Inuit Nunangat, a land of ice, water, and rich culture. This immersive expedition allows you to delve into the dynamic world of the Inuit people, where language, arts, cuisine, music, and traditions are seamlessly integrated into your voyage. As honored guests in the Inuit homeland, you'll gain unique insights into the profound connection between Inuit and the land. Engage with Inuit artists, cultural educators, academics, and more who generously share their knowledge and expertise. Experience the thrill of spotting polar bears, whales, and seabirds in the pristine Arctic environments of Greenland and Baffin Island. Visit the artistic hub of Panniqtuuq and immerse yourself in the mesmerizing landscapes of the Cumberland Peninsula, Southeast Baffin Island, and Ilulissat Icefjord. Hike, Zodiac cruise, and explore, while expert guides provide in-depth insights into the local flora, fauna, archaeological sites, and the rich Inuit culture that has thrived in this region for centuries. This expedition promises to be a once-in-a-lifetime adventure that combines natural beauty with cultural immersion.



ITINERARY

Day 1: Iqaluit, NU, Canada - Begin Your Adventure

Begin your journey by transferring to the ship by Zodiac through Iqaluit harbour. Iqaluit, at the head of Frobisher Bay, is Nunavut's capital.

A population of nearly 8,000 calls the city home. Local attractions include the territorial Legislature, igloo-inspired St. Jude's Cathedral, art shops, and more.



Day 2: Kitigtung (Lady Franklin Island) - Marvel at Incredible Geology

Journey to Lady Franklin Island, one of the many rugged and wildlife-rich islands dotting the south Baffin Island coast. Explore the coastline by Zodiac keeping watch for seabirds, polar bears, and marine life.

A wonderful introduction to the geology of Nunavut, examine the rock formations from the sea. With Inuit expedition team members by your side, you'll gain an intimate perspective on the captivating wildlife and geological wonders that cross your path.

Day 3: Southeast Baffin Island - Explore Southeast Baffin Island

Spend time on the nuna--the Inuktitut name for land. Take a hike that best suits your interest accompanied by our expert expedition team who offer insightful interpretations of the surroundings.

Soak in the full seasonal blooms at the height of Arctic summer as you explore the rolling tundra. A stop here will give you a unique opportunity to connect with nature on a profound level.

Day 4: Panniqtuuq (Pangnirtung) - Immerse yourself in Inuit art

Experience Panniqtuuq, nestled on a coastal plain amidst stunning mountains and a winding river valley. Meaning "the place of the bull caribou" in Inuktitut, this charming community is embraced by snow-capped peaks and the ocean.

Immerse yourself in renowned Inuit art at the Uqurmiut Inuit Arts Centre. Step inside the print and weave shop, where talented Inuit artists create beautifully woven tapestries and prints.

Get the opportunity to purchase the acclaimed "Pang" hats--colourfully patterned crocheted toques--at the centre's gift shop.

Day 5-6: Cumberland Peninsula - Experience the Rugged Beauty of the Cumberland Peninsula

Spend two days exploring the Cumberland Peninsula, a stunning Arctic region steeped in cultural heritage.

Jutting from the southeastern coast of Baffin Island, this peninsula encompasses Cumberland Sound, whose profuse wildlife sustained Inuit and their predecessors for thousands of years. We hope to experience the same natural wonders as we sail through the marine-rich waterway.

It was even considered a potential missing link in the early search for the Northwest Passage. While exploring, you'll have the opportunity to delve into the captivating maritime history of the region, gaining a deeper understanding of its past and present significance.

We'll make the most of every opportunity to hike the vast tundra and Zodiac in the ice-strewn waters. Make sure to keep an eye out for the abundant wildlife that calls this region home, including polar bears, Arctic foxes, and beluga whales.

Day 7: At Sea – Davis Strait - Learn From Inuit in Their Homeland

Deepen your understanding of the environment, cultures, and history of the region as we sail across the Davis Strait towards Greenland. Get the privileged opportunity to engage with and learn from Inuit in their homeland.

Enjoy workshops and presentations, watch a documentary, and get out on deck! Try your hand at athletic feats during an interactive cultural performance of Inuit games.

Through shared experiences and interactions, develop a deep appreciation for the culture and gain a profound connection to the stunning landscapes we traverse.

Keep your binoculars ready to spot whales and seabirds who follow in our



Wild Earth Travel

Small Ships, Big Adventures

wildearth-travel.com

info@wildearth-travel.com

wake.

Day 8-9: Western Greenland - Hike the Tundra

Welcome to Kalaallit Nunaat, or Greenland! Choose the activity you like best during an expedition landing on Greenland's spectacular west coast.

Whether you prefer hiking, walking, photography, or sitting contemplatively, you'll be delighted!

Alongside our team of knowledgeable naturalists, marine biologists, and geologists, embrace every opportunity to learn and deepen your connection to the landscapes we explore.

Admire the mighty mountains and the tiniest tundra flowers--a stop in this area will offer many outstanding features to pique your interest.

Day 10: Ilulissat - Take a Cruise Around Towering Icebergs

Experience the remarkable beauty of Ilulissat Icefjord, renowned for its enormous icebergs. Ilulissat means "iceberg"--an apt name for this site at the outlet of the Sermeq Kujalleq glacier. It is a UNESCO World Heritage Site and the source of many of the icebergs in the North Atlantic.

Marvel at the sheer grandeur of the towering ice formations as you take a stroll along the boardwalk--truly a sight to behold!

Visit the town, with its museums, charming cafes, craft shops, and bustling fishing harbour. Be sure to make your way to the Ilulissat Icefjord Centre, where you can delve into the fascinating narratives surrounding the ice and gain a deeper appreciation for this awe-inspiring natural wonder.

Day 11: Sisimiut Coast - Witness Stunning Glaciers, Islands, and Fjords

Explore West Greenland's complex coastal waterways that include glaciers, islands, and fjords against a towering mountain backdrop, with plentiful opportunities for hiking and Zodiac cruising.

Learn about the Saqqaq, Dorset, Thule, and modern Inuit cultures that have called the Sisimiut region home for the past 4,500 years.

The waters are relatively warm here, due to the West Greenland Current and the subarctic location.

Day 12: Kangerlussuaq, Greenland - Wave a Fond Farewell

End your journey by sailing up Kangerlussuaq Fjord (Søndre Strømfjord), a 190-kilometre-long fjord surrounded by mountains and glaciers, and cross the Arctic Circle on your way.

Kangerlussuaq, the settlement at the head of the fjord, is a former US Air Force base.

We will disembark in the morning and transfer by Zodiac for our return charter flight to Toronto, ON.

Please Note:

Itineraries are subject to change.

Wild Earth Travel
Small Ships, Big Adventures

0800 945 3327 (within New Zealand) | +64 (0) 3 365 1355 | **1800 107 715** (within Australia)

info@wildearth-travel.com | **wildearth-travel.com**



Wild Earth Travel
Small Ships, Big Adventures

wildearth-travel.com info@wildearth-travel.com

YOUR SHIP: OCEAN ENDEAVOUR

YOUR SHIP:	Ocean Endeavour
VESSEL TYPE:	Expedition
LENGTH:	137m
PASSENGER CAPACITY:	199
BUILT/REFURBISHED:	1982 - refurbished 2001, 2004, 2010, 2015, 2016, 2018

Ocean Endeavour is a comfortable, well-appointed small expedition ship expertly engineered to explore the Polar Regions. The ship has an ice-strengthened hull, Zodiacs for exploration and remote landings, and advanced navigation equipment. The newly-refurbished vessel offers a superb guest experience with an expansive choice of cabin categories, large cabins and common areas, a sundeck and observation area, plenty of deck space for polar landscape viewing, and lounges for learning and reflection. The ship's interiors have a contemporary aesthetic that provides a bright and spacious feel throughout.

Endeavour is also the only polar adventure ship in Antarctica focused on health and wellness , and offers a contemporary approach to cuisine and newly-designed health and fitness features. Facilities include a spa serviced by organic spa provider VOYA, His & Hers saunas, a salt water pool, a gym, and a juice and smoothie bar. Complimentary activities include yoga and stretching classes, an exclusive Polar Photography program, the Scientists in Residence program, and more adventure activities than any other Quark vessel. The ship also has a polar library, and a Polar Boutique for gifts and any needed gear.

Features of the Ocean Endeavour
 VOYA spa treatments and beauty products, Choice of 13 cabin categories, Bright, spacious cabins and common areas, Plenty of deck space for observation, Lounge with expansive views, Quiet zone for contemplation, Newly-refurbished restaurant, Contemporary dining with complimentary wine with dinner, Juice and smoothie bar, Lecture theater, Polar library, Polar boutique, Health and Wellness, Spa treatments and beauty products by spa provider VOYA - Organic Beauty From The Sea, Spa menu for face, body, hair and nails, including the exclusive Quark Explorer's treatment, and signature VOYA hand and foot rituals, Yoga and stretching classes, His & Hers saunas, gym, and heated salt water pool

Full range of adventure activities including: kayaking, camping, mountaineering, cross-country skiing, stand-up paddleboarding, Zodiac cruising, shore landings and hiking/ walking.

Deck plan varies for the trips to Antarctica





Wild Earth Travel

Small Ships, Big Adventures

wildearth-travel.com

info@wildearth-travel.com

Antarctica



Wild Earth Travel

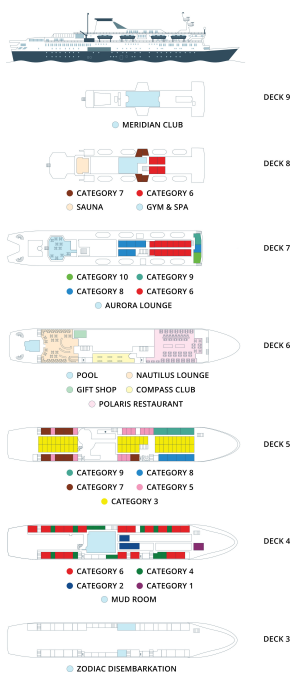
Small Ships, Big Adventures

0800 945 3327 (within New Zealand) | +64 (0) 3 365 1355 | **1800 107 715** (within Australia)

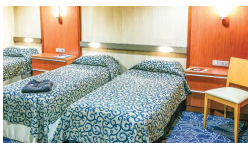
info@wildearth-travel.com | **wildearth-travel.com**



INSIDE YOUR SHIP



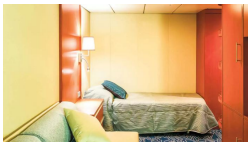
Cabin Category 1



Cabin Category 10



Cabin Category 2



Cabin Category 3



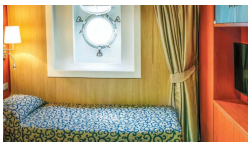
Cabin Category 4



Cabin Category 5



Cabin Category 6



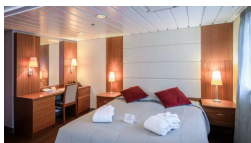
Cabin Category 7



Cabin Category 8



Cabin Category 9





PRICING

05-Aug-2025 to 16-Aug-2025

Cabin Category 1	6495 USD pp
Cabin Category 2	7495 USD pp
Cabin Category 3	8795 USD pp
Cabin Category 4	10095 USD pp
Cabin Category 5	10795 USD pp
Cabin Category 6	11495 USD pp
Cabin Category 7	12295 USD pp
Cabin Category 8	12795 USD pp
Cabin Category 9	13795 USD pp
Cabin Category 10	14795 USD pp

Optional extras & upgrades

Northbound Charter Flight 950 USD

Ottawa, ON, Canada to Iqaluit NU, Canada. Early-morning departure.

Southbound Charter Flight 1450 USD

Kangerlussuaq, Greenland to Toronto, ON, Canada. Evening arrival.