

Wild Earth Travel

Small Ships, Big Adventures

wildearth-travel.com

info@wildearth-travel.com

AUTUMN SPLENDOURS: FROM LOFOTEN TO THE NORWEGIAN FJORDS IN LUXURY

With featured guest Ian Dawson, British Photo Ambassador.

Aboard *_Le_ _Commandant Charcot_*, discover the shores of Norway and dive into the history of the coastal towns and fishing villages that punctuate this wild setting. The coastline, shaped by the ebb and flow and forged over the centuries by glaciers, will unveil its stunning panoramas, a veritable invitation to savour *_friluftsliv_*, the Norwegian way of life celebrating time outdoors. As winter draws near, the light dims to reveal the striking beauty of the Lofoten Islands and the serenity of the majestic fjords, like an ode to *_Kos_* - the pleasure of enjoying the moment.



ITINERARY

Days 1 - 2 Narvik

Beyond the Arctic Circle, you will discover Narvik, nestling in the heart of impressive mountains that plunge into the Ofotfjord. It is on the verge of obtaining the "sustainable destination" label, a national label awarded to destinations that are committed to a sustainable approach to tourism for the long term. You will be mesmerised by its scenery. From Narvik, it is possible to take the Ofoten Line towards Sweden. This historic railway once linked the mineral-rich mines of Kiruna in Sweden to the ice-free port of Narvik. You will experience unique moments whether meeting the Sami people reindeer herders who have ancestral traditions and yet embrace modernity.

Day 3 - Svalvaer, Lofoten

Wild Earth Travel

Small Ships, Big Adventures

0800 945 3327 (within New Zealand) | +64 (0) 3 365 1355 | **1800 107 715** (within Australia)

info@wildearth-travel.com | **wildearth-travel.com**

Wild Earth Travel

Small Ships, Big Adventures

wildearth-travel.com

info@wildearth-travel.com

Located on the island of Austvagøy, in the county of Nordland, Svolvær will be your ideal entry point for discovering the Lofoten islands. An important stopover to the north of Norway, fishing is one of the town's main features. And its speciality is? Cod. A picturesque white Lutheran church rests atop a hillside ridge, overlooking the town's multi-coloured houses. Still higher, the "The Solvaer Goat" mountain looks over the town from its rocky heights. Topped with two peaks like the horns of an animal, it is one of the region's must-see natural attractions.

Day 4 - Leknes, Lofoten

Way beyond the Arctic Circle, Lofoten Islands are truly considered to be in "another world". A jewel of nature in its most pristine state, this archipelago with its jagged coastline offers you majestic settings of high alpine summits, sandy beaches, green prairies and fjords of a deep blue, where countless bird colonies make their nests. Whether you visit Å, or Nusfjord, listed by UNESCO, enjoy authentic and memorable moments.

Day 5 - Bronnoysund

Nestling on the Torget peninsula a short distance from the Arctic Circle, not far from the mythical Torghatten granite dome, Bronnoysund invites you on an unforgettable journey into the heart of wild nature, between chains of rocky, green and snow-covered islets. The port of call in this former Viking city will also be an opportunity to discover the Vega archipelago, a UNESCO World Heritage Site. Its 6,500 or so islands will offer you indelible moments in this natural setting, where time seems to stand still. Surrounded by high mountains that drop sharply into the Norwegian Sea, these insular natural sanctuaries are home to many species of seabirds, like the common eider.

Day 6 - At sea aboard Le Commandant Charcot

Spend exceptional moments sailing aboard Le Commandant Charcot, the world's first luxury polar exploration vessel and the first PC2-class polar cruise ship capable of sailing into the very heart of the ice, on seas and oceans which the frozen conditions render inaccessible to ordinary ships. Le Commandant Charcot is fitted with oceanographic and scientific equipment selected by a committee of experts. Take advantage of the on-board lectures

and opportunities for discussion with these specialists to learn more about the poles. Participate in furthering scientific research with PONANT and let us discover together what these fascinating destinations have yet to reveal to us.

Day 7 - Sailing in the Geiranger Fjord

Listed as a UNESCO World Heritage Site since 2005, Geirangerfjord is part of the West Norwegian Fjords. Located in the south-west of Norway, to the north-east of Bergen, the fjord stretches from Stavanger in the south to Andalsnes, 500 km north-east. It is one of the longest and deepest fjords in the world and considered to be one of the most spectacular landscapes on the planet. You will admire the exceptional natural beauty of its narrow and steep-sided crystalline rock walls, rising to a height of 1,400 m and extending 500 m below sea level. Numerous waterfalls are part of the great variety of natural terrestrial and marine phenomena to be found at this site.

Day 8 - Ålesund

Surrounded by a multitude of islands, fjords and majestic mountains, the town of Ålesund surprises many visitors. In fact, it is internationally renowned for its Art nouveau architecture. After the terrible fire of 1904 which reduced a large part of the town to ashes, Norwegian architects inspired by the Art nouveau style contributed to its reconstruction, with a very picturesque result. Not far from Ålesund, you will also discover Giske, the native island of Rollon, the great Viking leader who commanded the Norse expeditions to Normandy, or the beautiful island of Godøy and the village of Alnes, which offers a grandiose panorama over the Atlantic Ocean and the surrounding islands.

Day 9 - Nordfjordeid

Nordfjordeid is a small town lying south of Ålesund, nestling in one of the arms of the Nordfjorden and its wild and magnificent shores. Between valleys with abundant vegetation and mountainous terrain, nature here offers a 360-degree view which was conducive to the early settlement of Viking communities, judging by the large number of tombs, among the country's largest and richest. You may get to deepen your knowledge of the Nordic culture and traditions at Sagastad, a surprising museum with interactive exhibitions and home, among other sights, to the Myklebust, one of the world's largest Viking ships, measuring 30 metres (98 feet) in length.

Wild Earth Travel

Small Ships, Big Adventures

0800 945 3327 (within New Zealand) | +64 (0) 3 365 1355 | **1800 107 715** (within Australia)

info@wildearth-travel.com | wildearth-travel.com

Wild Earth Travel

Small Ships, Big Adventures



wildearth-travel.com

info@wildearth-travel.com

Day 10 - Flam

Nestled in the heart of the fjord country, less than 200 kilometres from Bergen, the picturesque village of Flam - pronounced Flom - offers you an experience of authentic Norway. You can mosey around the brightly coloured streets and admire the majestic contours of the surrounding mountains. The town is also the departure point for the mythical train route Flamsbana, 20 kilometres long, whose journey offers a superb view of the scenery, as sublime as it is pristine. This attraction makes Flam one of the country's main tourist destinations.

applicable government regulations Please also note that the sailing programme, shore visits and activities cannot be guaranteed, as they are subject to weather conditions.

Days 11 - 12 At sea aboard Le Commandant Charcot

Spend exceptional moments sailing aboard Le Commandant Charcot, the world's first luxury polar exploration vessel and the first PC2-class polar cruise ship capable of sailing into the very heart of the ice, on seas and oceans which the frozen conditions render inaccessible to ordinary ships. Le Commandant Charcot is fitted with oceanographic and scientific equipment selected by a committee of experts. Take advantage of the on-board lectures and opportunities for discussion with these specialists to learn more about the poles. Participate in furthering scientific research with PONANT and let us discover together what these fascinating destinations have yet to reveal to us.

Days 13 - 14 Bergen

Located at the end of Byfjord, Bergen was the capital of Norway in the 12th and 13th Centuries and has preserved some very beautiful monuments from the time when it was home to royalty. Wandering through Bergen's streets means going back in time, in search of the hidden treasures that have been listed as World Heritage Sites by UNESCO. A veritable openair museum, Bergen is home to a thriving artistic community of painters, potters, jewellers. The Bergen cable car offers you a splendid panorama over the port and the surrounding fjords. Do not miss the visit to the old quarter with its narrow streets, a testimony of the power of the hanseatic League that controlled trade in Northern Europe at the end of the Middle Ages.

Please Note:

The itinerary may be altered based on port approvals and to comply with

Wild Earth Travel

Small Ships, Big Adventures

0800 945 3327 (within New Zealand) | +64 (0) 3 365 1355 | **1800 107 715** (within Australia)

info@wildearth-travel.com | **wildearth-travel.com**

Wild Earth Travel

Small Ships, Big Adventures



wildearth-travel.com

info@wildearth-travel.com

YOUR SHIP: LE COMMANDANT-CHARCOT

YOUR SHIP:	Le Commandant-Charcot
VESSEL TYPE:	Polar Luxury Expedition
LENGTH:	149.9 meters
PASSENGER CAPACITY:	135 cabins
BUILT/REFURBISHED:	2018/2019

Be the first aboard Le Commandant-Charcot, the world's luxury polar exploration vessel, and enjoy a unique sailing experience in the Arctic or Antarctic!

With its hybrid propulsion combining liquefied natural gas (LNG) and electric generators, Le Commandant-Charcot has been designed to minimise the environmental impact of travel to the furthest latitudes.

The decoration of the ship, imagined by two internationally renowned design and architecture firms - the studio of Jean-Philippe Nuel and Wilmotte & Associates - is designed to be in harmony with the environment. The approach is contemporary with the desire to create a warm and elegant setting; stone, wood and leather recall the natural environment in which the ship is sailing.

Equipped with just 135 staterooms including 31 suites with balconies and outside views, Le Commandant-Charcot welcomes you in an intimate and refined atmosphere. Outstanding gastronomy in the two restaurants, relaxation in the indoor pool surrounded by its winter garden, relaxation in the well-being area with sauna and Snow Room... Like on a private yacht, each of our guests is unique.

PUBLIC AREAS

Le Commandant-Charcot has many common areas that are designed and equipped to meet all of your needs while preserving the intimacy of each passenger.

A 177 m² reception area includes: A reception/concierge desk, An expeditions desk, The ship's administrative services, The sales office, manned by our Hospitality & Travel Manager officer, Our boutique which sells clothing, jewellery, beauty products, postcards and various accessories, The image & photo desk.

The different lounges: A 302 m² main lounge including a 28 m² cigar lounge, a tea corner and a bar, with live music on selected evenings, A 400 m² panoramic bar and lounge, An open-air Bar.

The recreation spaces

Fitness & Beauty Corner: Fitness room: Elliptic, running machines, bicycles...

Beauty Corner: Hairdresser, Massage rooms, Sauna, Snow Room, Nail Shop.

Pool area: Indoor Pool and winter garden - Outdoor Pool

Theatre: Capacity: 270-276 - Main show room for conferences and live entertainment on selected evenings - State-of-the-art audio and video technology.

Leisure area: Public areas - Library - Medical centre.

16 Zodiac®.

Wild Earth Travel

Small Ships, Big Adventures

0800 945 3327 (within New Zealand) | +64 (0) 3 365 1355 | **1800 107 715** (within Australia)

info@wildearth-travel.com | **wildearth-travel.com**



Wild Earth Travel

Small Ships, Big Adventures



wildearth-travel.com

info@wildearth-travel.com



16 Zodiac®.



Wild Earth Travel

Small Ships, Big Adventures

0800 945 3327 (within New Zealand) | +64 (0) 3 365 1355 | **1800 107 715** (within Australia)

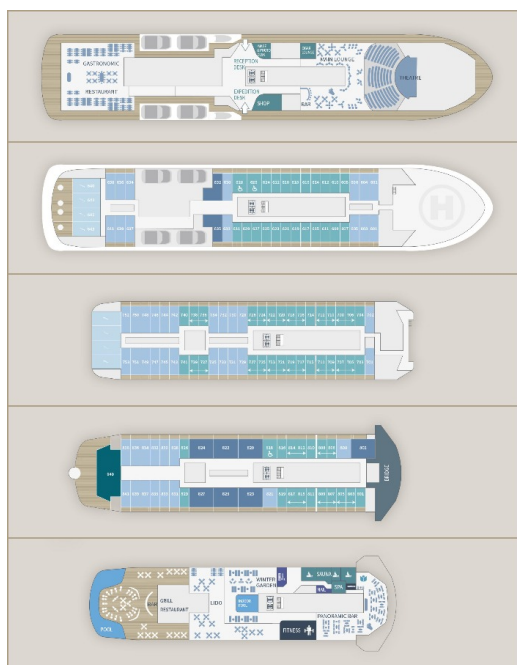
info@wildearth-travel.com | **wildearth-travel.com**



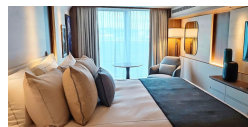
wildearth-travel.com

info@wildearth-travel.com

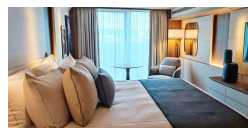
INSIDE YOUR SHIP



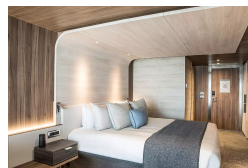
Deluxe Suite Deck 6



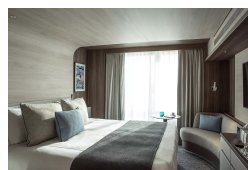
Deluxe Suite Deck 8



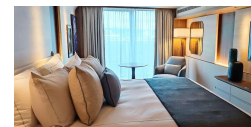
Grand Prestige Suite



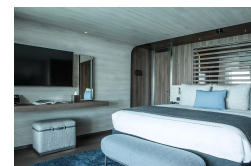
Prestige Stateroom Deck 7



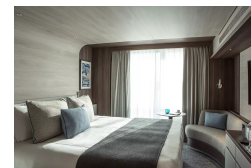
Deluxe Suite Deck 7



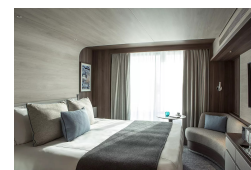
Duplex Suite



Prestige Stateroom Deck 6



Prestige Stateroom Deck 8



Wild Earth Travel

Small Ships, Big Adventures

wildearth-travel.com

info@wildearth-travel.com

PRICING

01-Nov-2026 to 14-Nov-2026

Prestige Stateroom Deck 6	19770 AUD pp
Prestige Stateroom Deck 7	20130 AUD pp
Prestige Stateroom Deck 8	20490 AUD pp
Deluxe Suite Deck 6	21030 AUD pp
Deluxe Suite Deck 7	21930 AUD pp
Deluxe Suite Deck 8	22650 AUD pp
Prestige Suite Deck 7	28780 AUD pp
Prestige Suite Deck 8	29680 AUD pp
Grand Prestige Suite	30580 AUD pp
Privilege Suite Deck 8	32400 AUD pp
Duplex Suite	44120 AUD pp

Wild Earth Travel

Small Ships, Big Adventures

0800 945 3327 (within New Zealand) | +64 (0) 3 365 1355 | **1800 107 715** (within Australia)

info@wildearth-travel.com | **wildearth-travel.com**



Wild Earth Travel

Small Ships, Big Adventures



wildearth-travel.com

info@wildearth-travel.com

SPECIAL OFFERS

Online prices reflect the current brochure fare savings of up to 30%. Prices may change based on demand. Terms and conditions apply. This special offer is subject to availability. Please contact us for more details.



Wild Earth Travel

Small Ships, Big Adventures

0800 945 3327 (within New Zealand) | +64 (0) 3 365 1355 | **1800 107 715** (within Australia)

info@wildearth-travel.com | **wildearth-travel.com**