

Wild Earth Travel

Small Ships, Big Adventures

wildearth-travel.com

info@wildearth-travel.com

AUSTRALIA'S WEST COAST ODYSSEY - IMMACULATE BEACHES & TURQUOISE WATERS

Explore the Australian west coast during an all-new 11-day expedition cruise aboard Le Soleal. Immaculate beaches edged with turquoise waters, majestic landscapes designated as UNESCO World Heritage Sites, encounters with marine life and unearthing the mysterious history of the region... this unforgettable journey is sure to surprise you.

Set sail for the Jurien Bay Marine Park, the only major breeding area for Australian sea lions along the western coast of Australia. In this environment of islands and islets, you will discover rare wildlife, before heading for the Abrolhos Marine Park. The colourful coral reef and seabird breeding colonies make this a place like no other.

Shark Bay, the next stage of your cruise, is one of the highlights of this odyssey. A UNESCO World Heritage Site, its islands and lands enjoy exceptional natural characteristics.

You will then head for the Ningaloo Coast. You will be able to explore the sublime coral of these shores swimming and snorkeling. A little further on, a Zodiac outing in the Montebello Islands marine park will also provide an opportunity to dive deeper into the history and wildlife of this region.

In the Murujuga National Park, on the Burrup Peninsula, you will marvel before the 40,000-year-old rock art (petroglyphs). Human figures, seabirds or extinct creatures cover the walls and provide a glimpse into the ancient world of Australia's First Nations Peoples for a timeless moment of discovery.



discovery.

ITINERARY

Day 1 FREMANTLE

The vibrant city of Fremantle blends the old with the new, creating an enriching cultural experience. Maritime, convict and colonial history can be explored in one of the best-preserved examples of a 19th century port streetscape on Earth, while buzzing markets, lively bars and casual street cafes give you a taste of 21st century life with the locals. If you're hitting the heritage trail, be sure to include a visit to the Western Australian Maritime Museum, World Heritage listed Fremantle Prison and Western Australia's oldest public building, the Roundhouse.



Wild Earth Travel

Small Ships, Big Adventures

wildearth-travel.com

info@wildearth-travel.com

Day 2 JURIE BAY MARINE PARK

Jurien Bay Marine Park located 150 kilometres north of Perth, was named by Captain Nicolas Baudin aboard the Geographe in honour of the French naval administrator Charles Marie Vicomte Jurien. The marine park surrounds dozens of ecologically important islands that contain rare and endangered animals found nowhere else in the world. The marine park and its immediate surrounds is the only major breeding area for Australian sea lions along the western coast of Australia. It is also a primary breeding ground for seabirds and is populated with a mix of temperate and tropical plants and animals, courtesy of the Leeuwin Current.

Day 3 ABROLHOS ISLANDS MARINE PARK

The Abrolhos Islands Marine Park consists of three main clusters of islands that stretch from north to south across 100 kilometres of ocean, and includes the Wallabi Group, Easter Group and Pelsaert Group. Established as a marine park in 1983, the waters of the Abrolhos are famous for colourful coral, crystal clear waters and large breeding colonies of seabirds. Here, the southward flowing Leeuwin current has created a meeting place for tropical and temperate sea life. In July 2019 the Islands were declared a national park for their ecological and historical significance. You will have the opportunity to explore East Wallabi Island and its fringing reefs.

Day 4 SHARK BAY WORLD HERITAGE AREA

With its white, sandy beaches, turquoise waters, rust-red sand dunes and abundant wildlife, Shark Bay became Western Australia's first World Heritage listed area in 1991. The colourful and diverse landscapes, rare fauna and flora and world class examples of Earth's ecological processes are what qualify Shark Bay for World Heritage listing - making it a truly remarkable place. You will have the opportunity to sail past the location of the first recorded European landing on Australia's west coast at Cape Inscription where in 1616 Dirk Hartog left evidence of his landing in the form of a pewter plate inscribed

with details of his journey.

Day 5 CAPE PERON

Cape Peron, named in honour of the French explorer François Peron, is a wild and isolated spot in the middle of Australia's Shark Bay, and a UNESCO World Heritage Site. Here the turquoise waters of the Indian Ocean contrast with endless white sandy beaches and ochre cliffs tinged with the red sand of the surrounding deserts. You can set out to discover the astonishingly rich underwater wildlife, including stromatolites: the oldest known life forms on the planet. You will be amazed by the unspoiled beauty of this nature.

Days 6 - 7 NINGALOO COAST WORLD HERITAGE AREA

The Ningaloo Coast Marine Park is a place of spectacular contrast between lush and colourful scenery beneath the surface of the Indian Ocean and the rugged, arid landscape of Cape Range National Park. Here is also one of few places on Earth where you can see the biggest fish in the ocean - the whale shark. Depending on the season, you will have the opportunity to encounter these amazing giants of the sea. We will also have the opportunity to swim and snorkel on the largest fringing coral reef in Australia and the only large reef in the world found so close to a continental land mass, making it an easy snorkel from shore.

Day 8 MONTEBELLO ISLANDS

Located off the Pilbara Coast 120km west of Dampier, the Montebello Islands Marine Park covers more than 58,000 hectares of ocean and over 250 low-lying limestone islands and islets. The flat limestone islands range in size from Hermite, the largest, at about 1,000 ha, to several small islets and rocks of less than one hectare. They are the remnants of an old coastal landform and have been separated from the mainland for more than 8,000 years. They were named by the French navigator Nicolas Baudin in 1801 after the battle of Montebello. The area is rich in natural marine diversity and human history.

Wild Earth Travel

Small Ships, Big Adventures

0800 945 3327 (within New Zealand) | +64 (0) 3 365 1355 | **1800 107 715** (within Australia)

info@wildearth-travel.com | **wildearth-travel.com**



Wild Earth Travel

Small Ships, Big Adventures

wildearth-travel.com

info@wildearth-travel.com

They achieved international notoriety in 1952 when the British, in an operation code named Hurricane, detonated an atomic weapon in a bay off Trimouille island. Two further atomic tests were carried out in May and June of 1956 on Alpha and Trimouille Islands. You will have the opportunity to explore the marine park with our fleet of Zodiacs®.

Day 9 BURRUP PENINSULA

Murujuga National Park and the islands of the Dampier Archipelago showcase what is thought to be the highest concentration of rock engravings of any known site in the world. Aboriginal people have been living there for more than 50,000 years and the petroglyphs (rock engravings) have been estimated to be as old as 40,000 years. The petroglyphs are diverse, depicting a record of what was meaningful to the Aboriginal people of the Pilbara and beyond. The sacred rock art's traditional custodians are the Ngarluma-Yindjibarndi, the Yaburara-Mardudhunera and the Woon-goo-tt-oo and you will have the opportunity to visit Deep Gorge with a traditional custodian guide and marvel at the petroglyphs up close.

Day 10 AT SEA

During your journey at sea, make the most of the many services and activities on board. Treat yourself to a moment of relaxation in the spa or stay in shape in the fitness centre. Depending on the season, let yourself be tempted by the swimming pool or a spot of sunbathing. This journey without a port of call will also be an opportunity to enjoy the conferences or shows proposed on board, depending on the activities offered, or to do some shopping in the boutique or to meet the PONANT photographers in their dedicated space. As for lovers of the open sea, they will be able to visit the ship's upper deck to admire the spectacle of the waves and perhaps be lucky enough to observe marine species. A truly enchanted interlude, combining comfort, rest and entertainment.

Day 11 BROOME

Located in the northwest of the Kimberley region and in the far north of Western Australia, the town of Broome is reputed for its history and its glorious pearling era. The fascinating Chinatown district, which is the historic city centre, and the famous Japanese Cemetery, dates back to 1896, and has a past marked by the immigration of numerous Chinese and Japanese workers, attracted by the prosperous pearl industry at the end of the 19th century and at the beginning of the 20th century. Broome is also famous for the "Staircase to the Moon", an optical illusion created by the Moon reflecting on the sand banks at low tide, like a staircase climbing up towards the sky, a unique spectacle provided by nature...

Please note:

Itineraries are subject to change.

Wild Earth Travel
Small Ships, Big Adventures

0800 945 3327 (within New Zealand) | +64 (0) 3 365 1355 | **1800 107 715** (within Australia)

info@wildearth-travel.com | **wildearth-travel.com**

Wild Earth Travel

Small Ships, Big Adventures

wildearth-travel.com

info@wildearth-travel.com

YOUR SHIP: LE SOLEAL

YOUR SHIP:	Le Soleal
VESSEL TYPE:	Luxury Small Ship
LENGTH:	142 metres
PASSENGER CAPACITY:	264
BUILT/REFURBISHED:	2013



Sailing under the French flag, this magnificent yacht of only 132 staterooms and suites, with balconies, joined in 2013. You will be enchanted by the contemporary decor inspired by the luxury yachting world, with fluid lines and a modern colour scheme combining natural wood with shades of grey and white.

A refined ambience is enhanced by the quality of the workmanship and materials: white Corian counters in the lobby contrast with the warmth of leather to recall a boat's hull, while the central sculpture of enamelled pieces takes its inspiration from the sea. In the loungebar, the carpet picks up a tennis stripe theme symbolising a certain idea of cruising, one synonymous with French elegance and a chic seaside spirit.

Wild Earth Travel

Small Ships, Big Adventures

0800 945 3327 (within New Zealand) | +64 (0) 3 365 1355 | **1800 107 715** (within Australia)

info@wildearth-travel.com | **wildearth-travel.com**

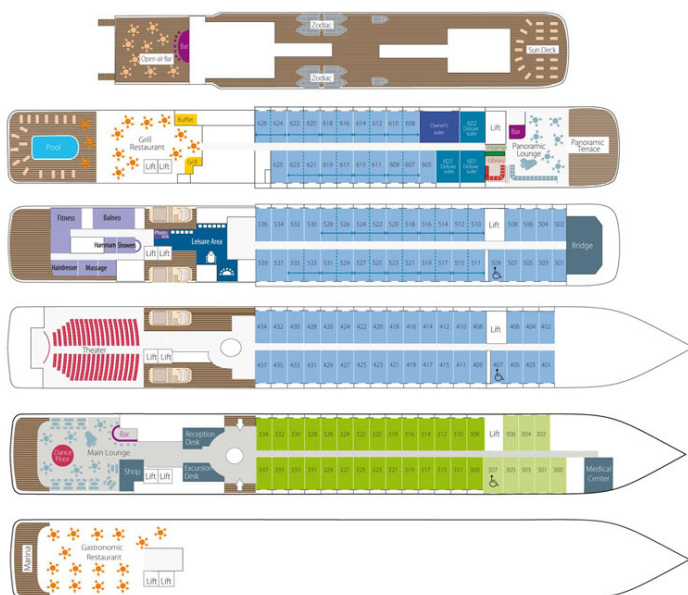
Wild Earth Travel

Small Ships, Big Adventures

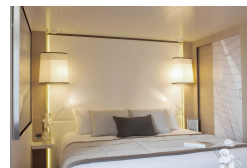
wildearth-travel.com

info@wildearth-travel.com

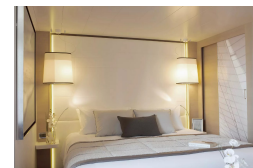
INSIDE YOUR SHIP



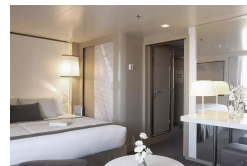
DeLuxe Stateroom



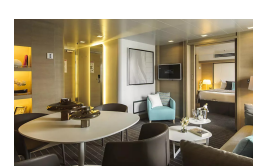
Deluxe Stateroom



Deluxe Suite



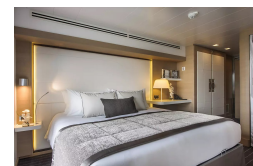
Owner's Suite



Prestige Deck 4



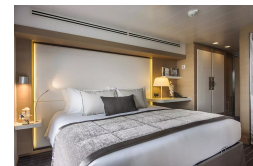
Prestige Deck 5



Prestige Deck 5 Suite



Prestige Deck 6



Wild Earth Travel
Small Ships, Big Adventures

0800 945 3327 (within New Zealand) | +64 (0) 3 365 1355 | 1800 107 715 (within Australia)

info@wildearth-travel.com | wildearth-travel.com

Wild Earth Travel

Small Ships, Big Adventures

wildearth-travel.com

info@wildearth-travel.com

PRICING

11-Aug-2025 to 21-Aug-2025

Superior Stateroom	13090 AUD pp
DeLuxe Stateroom	14180 AUD pp
Prestige Stateroom - Deck 4	15720 AUD pp
Prestige Stateroom - Deck 5	16490 AUD pp
Prestige Stateroom - Deck 6	17410 AUD pp
Deluxe Suite	22660 AUD pp
Prestige Suite - Deck 5	27300 AUD pp
Prestige Suite - Deck 6	28540 AUD pp
Owner's Suite	38180 AUD pp

21-Aug-2025 to 31-Aug-2025

Superior Stateroom	11970 AUD pp
DeLuxe Stateroom	12980 AUD pp
Prestige Stateroom - Deck 4	14420 AUD pp
Prestige Stateroom - Deck 5	15130 AUD pp
Prestige Stateroom - Deck 6	15990 AUD pp
Deluxe Suite	21880 AUD pp
Prestige Suite - Deck 5	26460 AUD pp
Prestige Suite - Deck 6	27760 AUD pp
Owner's Suite	33490 AUD pp

29-Jul-2026 to 08-Aug-2026

Superior Stateroom	14400 AUD pp
Deluxe Stateroom	15590 AUD pp
Prestige Deck 4	17290 AUD pp
Prestige Deck 5	18140 AUD pp
Prestige Deck 6	19160 AUD pp
Deluxe Suite	24970 AUD pp
Prestige Deck 5 Suite	30090 AUD pp
Prestige Deck 6 Suite	31450 AUD pp

08-Aug-2026 to 18-Aug-2026

Superior Stateroom	15180 AUD pp
Deluxe Stateroom	16440 AUD pp
Prestige Deck 4	18240 AUD pp
Prestige Deck 5	19150 AUD pp
Prestige Deck 6	20230 AUD pp
Deluxe Suite	26380 AUD pp
Prestige Deck 5 Suite	31790 AUD pp
Prestige Deck 6 Suite	33230 AUD pp

ADDITIONAL CHARGES:

Port Taxes 740 AUD pp



Wild Earth Travel

Small Ships, Big Adventures

wildearth-travel.com

info@wildearth-travel.com

SPECIAL OFFERS

Online prices reflect the current brochure fare savings of up to 30%. Prices may change based on demand. Terms and conditions apply. This special offer is subject to availability. Please contact us for more details.

Wild Earth Travel

Small Ships, Big Adventures

0800 945 3327 (within New Zealand) | +64 (0) 3 365 1355 | **1800 107 715** (within Australia)

info@wildearth-travel.com | **wildearth-travel.com**