

# Wild Earth Travel

*Small Ships, Big Adventures*

**wildearth-travel.com**

**info@wildearth-travel.com**

## AUSTRALIA'S ICONIC KIMBERLEY - FROM BROOME OR DARWIN LUXURY CRUISE

This cruise is intended for English-speaking passengers. All lectures, comments by naturalists during the outings and visits as well as the announcements and services on board will be in English. Set sail for the wild and grandiose landscapes of Kimberley, following this exceptional PONANT itinerary. From Broome to Darwin, embark for an 11-day expedition cruise. On the Lacepede Islands, take the time to admire the abundance of nesting birds as well as the large population of turtles residing in the lagoon. In one of the most picturesque parts of the region, the Hunter River, you will see wild mangrove forests where saltwater crocodiles live along with many species of birds. During your cruise, the magnificent bays of Vansittart and Swift will offer you exceptional panoramas, between islands, secret inlets, caves and rocky overhangs. The highpoint of this cruise will undoubtedly be the discovery of the King George River and the majestic Twin Falls, the highest falls in Western Australia. You will also visit Collier Bay, where you will be able to admire the Montgomery Reef, home to vast expanses of lagoons and immense coral reefs. Your ship will take you along one of the most spectacular coasts in the entire region. With their falls, abrupt gorges, savannah, calm waters and desolate mountain chains, the wild lands of Kimberley are the promise of an exceptional adventure.



### ITINERARY

#### Day 1 BROOME

Located in the northwest of the Kimberley region and in the far north of Western Australia, the town of Broome is reputed for its history and its glorious pearling era. The fascinating Chinatown district, which is the historic city centre, and the famous Japanese Cemetery, dates back to 1896, and has a past marked by the immigration of numerous Chinese and Japanese workers, attracted by the prosperous pearl industry at the end of the 19th century and at the beginning of the 20th century. Broome is also famous for the "Staircase to the Moon", an optical illusion created by the Moon reflecting on the sand banks at low tide, like a staircase climbing up towards the sky, a unique spectacle provided by nature...

#### Day 2 LACEPEDE ISLANDS

Wild Earth Travel

*Small Ships, Big Adventures*

**0800 945 3327** (within New Zealand) | +64 (0) 3 365 1355 | **1800 107 715** (within Australia)

info@wildearth-travel.com | **wildearth-travel.com**



# Wild Earth Travel

*Small Ships, Big Adventures*

**wildearth-travel.com**

**info@wildearth-travel.com**

The Lacepede Islands are Western Australia's most important breeding habitat for Green Turtles (*Chelonia mydas*), and have been named by BirdLife International as an Important Bird Area (IBA). The breeding colony of Brown Boobies is possibly the largest in the world. Up to 20,000 Roseate Terns have also been recorded here. Other birds breeding on the islands include Masked Boobies, Australian Pelicans, Lesser Frigatebirds, Eastern Reef Egrets, Silver Gulls, Crested, Bridled and Lesser Crested Terns, Common Noddies, Pied and Sooty Oystercatchers. Join your expedition team for a guided zodiac tour to view the prolific wildlife. Due to the sensitive nature of the environment, landings are prohibited on the Lacepede Islands.

## Days 3 - 4 COLLIER BAY

Lying to the east of the Buccaneer archipelago, the ancient landscapes of Collier Bay have been shaped by the massive tidal movements the region is renowned for, creating a photographer's paradise. With a tidal range exceeding 14 metres, recorded near Yule entrance at the southern end of the bay, they are among the largest in the world. This massive daily movement of water creates unique phenomena that occur nowhere else in the world. Nestled in the centre of the Bay is Montgomery Reef, the world's largest inshore reef system. As the tide falls a raging torrent of water cascades off the top of the reef, creating turbulent 'rivers' and mini waterfalls. At the Southern end of the Bay, Talbot Bay is home to the world's only 'Horizontal Falls' described by Sir David Attenborough as "One of the greatest wonders of the natural world." Hidden in the many caves and grottos of this ancient landscape are a multitude of ancient Rock Art galleries. Here you can find spectacular examples of the Wandjina and Gwion Gwion styles. As we are at the mercy of weather and tide conditions in this region, the activities mentioned above are only possible experiences and can't be guaranteed.

## Day 5 CAREENING BAY

Careening Bay was named by Lieutenant Phillip Parker King after his ship, HMC Mermaid, was careened there during his third voyage of discovery in 1820. King surveyed the western coast to complete the map initiated by Flinders 20 years earlier. The Mermaid had been leaking badly and King needed to find a shallow sandy bay where he could careen his boat to undertake repairs. At a high tide, on a warm September afternoon, he ran the Mermaid onto the sands. For ten days the Mermaid crew worked hard before refloating the vessel. The ship's carpenter carved the name of the vessel and

the year into a conspicuous boab tree. The famous boab tree is now 3 metres wide and National Heritage listed. A reminder of a by gone era of exploration!

## Day 6 HUNTER RIVER

Arguably one of the most scenic parts of the Kimberley coast, Prince Frederick Harbour and the Hunter River are lined with ancient rainforest pockets, pristine mangroves and mosaic sandstone cliffs. They are considered to be some of the most pristine mangrove forests in the world, containing up to 18 different species, supporting a rich and diverse fauna. The sandstone escarpment at the river mouth, known as "Kampamantiya" rises over 200 metres high before giving way to extensive mud banks and mangrove forests home to numerous bird species and the iconic saltwater crocodile. Our expert Expedition Team will share their knowledge with you as you explore this pristine mangrove environment by zodiac keeping a constant lookout for wildlife. You will also have the opportunity to reach the Mitchell Falls by helicopter from Naturalist Island beach.

## Day 7 SWIFT BAY

The Bonaparte Archipelago, is a stunningly rugged maze of islands stretching almost 150 km along Western Australia's remote Kimberley coast. Its colour and scale conspire to take ones' breath away. Its distant location has meant it has remained an unspoilt and remarkably pristine location to explore and experience. Phillip Parker King named "Swift's bay" after Jonathon Swift (1667-1745) the author of Gulliver's travels. The 'T' shaped bay is composed of heavily fractured sandstone providing an abundance of rock shelters. On the walls of these shelters are examples of both Wandjina and Gwion Gwion style rock art. Join your expedition team ashore for a guided walk to a number of rock art galleries depicting these unique rock art styles.

## Day 8 VANSITTART BAY

Jar Island contains ancient rock art galleries depicting the Gwion Gwion style unique to the Kimberley region. Mainly neglected by, or unknown to, the early European researchers of Aboriginal culture in the Kimberley in favour of the dominant and more dramatic Wandjina art, Gwion Gwion art has in recent years gained world prominence. It is generally thought that this art may extend back to over 30,000 years before our time and represents the first wave of seagoing colonisers of the Australian continent. As it is, these are the oldest





detailed depiction of human figures in the world. Join your Expedition Team ashore for a short walk, past some fascinating rock formations, to the site of the Gwion Gwion art galleries.

#### Day 9 KING GEORGE RIVER

The journey up the King George River is nothing short of breathtaking. The 80-metre-high sides of the gorge display varying degrees of weathering of the ancient Warton sandstone. The colours and textures of the gorge change with the light as you travel further up the river creating a continual changing scenery that is simply stunning. The journey culminates at the King George twin falls; the highest single-drop falls in the whole of the Kimberley (80 m or 260 ft). Fed by wet season run-off the level of water cascading over the falls varies from year to year. Your Expedition Team will escort you in either the zodiacs or ships tenders to the foot of the twin falls, and explain all about the stunning geological formations of the canyon.

#### Day 10 AT SEA

During your journey at sea, make the most of the many services and activities on board. Treat yourself to a moment of relaxation in the spa or stay in shape in the fitness centre. Depending on the season, let yourself be tempted by the swimming pool or a spot of sunbathing. This journey without a port of call will also be an opportunity to enjoy the conferences or shows proposed on board, depending on the activities offered, or to do some shopping in the boutique or to meet the PONANT photographers in their dedicated space. As for lovers of the open sea, they will be able to visit the ship's upper deck to admire the spectacle of the waves and perhaps be lucky enough to observe marine species. A truly enchanted interlude, combining comfort, rest and entertainment.

#### Day 11 DARWIN

Darwin is located in Australia's Northern Territory which is also known as the "Top End". It is the capital city and the most populated town of the Northern Territory. Darwin is a beautiful tropical city, a melting pot of people and cultures, over 50 different cultures live and work side by side that prides itself in its unique and friendly laid-back lifestyle. Come discover the town's still recent history through its emblematic buildings such as the new Parliament House opened in 1994, a magnificent example of tropical architecture or

Admiralty House declared heritage place, a tropical-style home elevated on stilts that has survived two cyclones and numerous air raids.

#### Please Note:

This itinerary is given as an indication only. Based on tide times and weather conditions, the Captain and the Expedition Leader may need to switch the order of certain ports of call around to ensure guests have the best possible experience.

# Wild Earth Travel

*Small Ships, Big Adventures*

**wildearth-travel.com**

**info@wildearth-travel.com**

## YOUR SHIP: LE JACQUES CARTIER

**YOUR SHIP:** Le Jacques Cartier

**VESSEL TYPE:** Luxury

**LENGTH:**

**PASSENGER CAPACITY:** 92 cabins

**BUILT/REFURBISHED:** 2018/2019

Featuring innovative and environmentally-friendly equipment, elegantly designed staterooms, spacious suites with large windows, and lounge areas that open onto the outside, this new limited-capacity yacht boasting just 92 staterooms and suites will offer you a truly unique cruising experience.

As the sixth ship in a new series that remains true to the Ponant spirit, Le Jacques Cartier will embody the unique atmosphere that is the cruise line's hallmark: a subtle blend of refinement, intimacy and comfort.

Aboard this ship that flies the French flag, you will experience the incomparable pleasure of an intimate cruise, with the possibility of exploring an ever-increasing range of destinations in an ethnic-chic ambiance with luxury service.

Experience a luxurious setting where the accent is on authenticity and passion for travel.

### RESTAURANTS

As it is an essential part of French culture, gastronomy will naturally have pride of place aboard this new ship.

To the back of Deck 4, you will find a 260 m<sup>2</sup> panoramic restaurant which can accommodate all of our passengers in a single sitting. Designed differently to that on our other ships, this

dining area, which opens onto the outside, will have a buffet of salads, desserts and cheeses at your disposal. Our discreet and attentive crew will provide table service for hot meals.

In a relaxed atmosphere, an outdoor grill on Deck 3 will serve grilled meats with a variety of salads and desserts.

### PUBLIC AREAS

Le Jacques Cartier has many common areas that are designed and equipped to meet all of your needs while preserving the intimacy of each passenger.

A 140 m<sup>2</sup> reception area includes:

A reception/concierge desk,

An excursions desk,

The ship's administrative services,

The sales office, manned by our Guest Relations Officer,

Our 50 m<sup>2</sup> boutique which sells clothing, jewellery, beauty products, postcards and various accessories,

Toilets accessible to passengers with reduced mobility.

A new hydraulic platform with adjustable height provides:

Easier boarding than on any other cruise ship,

Easier Zodiac embarkation and disembarkation for expeditions,

Easier access to the sea for swimming and practising various water sports such as kayaking or paddle-boarding.

A pool deck offering:

A pool with a panoramic view, equipped with a counter-current swimming system,

A pleasant solarium,

An outdoor bar and lounge with armchairs and sofas.

A 200 m<sup>2</sup> main lounge which can accommodate all of our passengers to share convivial moments and to host activities

# Wild Earth Travel

*Small Ships, Big Adventures*

**wildearth-travel.com**

**info@wildearth-travel.com**

organised during the day or evening.

Lastly, a theatre that seats 188, equipped with:

The latest sound and lighting technology,

A LED wall as the stage backdrop, for the projection of high-resolution images and videos.



and videos.

Wild Earth Travel

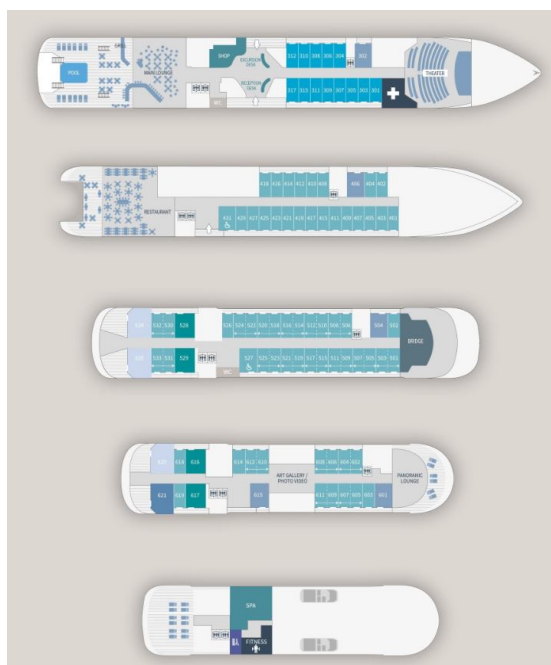
*Small Ships, Big Adventures*

**0800 945 3327** (within New Zealand) | +64 (0) 3 365 1355 | **1800 107 715** (within Australia)

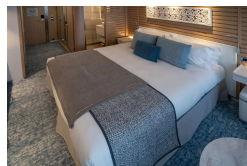
info@wildearth-travel.com | **wildearth-travel.com**



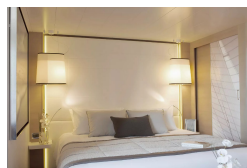
## INSIDE YOUR SHIP



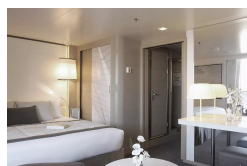
### DELUXE STATEROOM



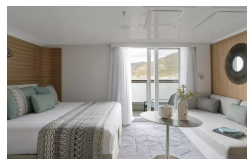
DeLuxe Stateroom



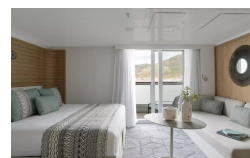
Deluxe Suite



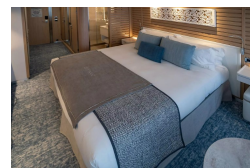
Deluxe Suite Deck 4



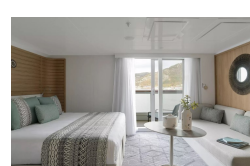
### DELUXE SUITE



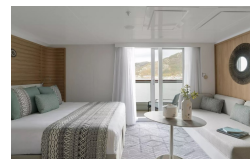
Deluxe Stateroom



Deluxe Suite Deck 3



Deluxe Suite Deck 5



# Wild Earth Travel

*Small Ships, Big Adventures*

**wildearth-travel.com**

**info@wildearth-travel.com**

## PRICING

### 02-Jul-2025 to 12-Jul-2025

|                             |              |
|-----------------------------|--------------|
| Superior Stateroom          | 13670 AUD pp |
| DeLuxe Stateroom            | 14830 AUD pp |
| Prestige Stateroom - Deck 4 | 16460 AUD pp |
| Prestige Stateroom - Deck 5 | 17280 AUD pp |
| Prestige Stateroom - Deck 6 | 18260 AUD pp |
| Deluxe Suite                | 23840 AUD pp |
| Prestige Suite - Deck 5     | 28770 AUD pp |
| Prestige Suite - Deck 6     | 30090 AUD pp |
| Owner's Suite               | 38180 AUD pp |

### 03-Jul-2025 to 13-Jul-2025

|                           |              |
|---------------------------|--------------|
| DELUXE STATEROOM          | 14830 AUD pp |
| PRESTIGE STATEROOM DECK 4 | 16460 AUD pp |
| PRESTIGE STATEROOM DECK 5 | 17280 AUD pp |
| PRESTIGE STATEROOM DECK 6 | 18260 AUD pp |
| Deluxe Suite Deck 6       | 23840 AUD pp |
| Deluxe Suite Deck 5       | 23840 AUD pp |
| Deluxe Suite Deck 4       | 23840 AUD pp |
| DELUXE SUITE              | 23840 AUD pp |
| PRESTIGE SUITE DECK 5     | 28770 AUD pp |
| PRESTIGE SUITE DECK 6     | 30090 AUD pp |
| PRIVILEGE SUITE           | 31060 AUD pp |
| Privilege Suite Deck 6    | 31060 AUD pp |
| GRAND DELUXE SUITE        | 32040 AUD pp |
| Grand Deluxe Suite Deck 6 | 32040 AUD pp |
| OWNER'S SUITE             | 38180 AUD pp |

### 12-Jul-2025 to 22-Jul-2025

|                             |              |
|-----------------------------|--------------|
| Superior Stateroom          | 13090 AUD pp |
| DeLuxe Stateroom            | 14180 AUD pp |
| Prestige Stateroom - Deck 4 | 15720 AUD pp |
| Prestige Stateroom - Deck 5 | 16490 AUD pp |
| Prestige Stateroom - Deck 6 | 17410 AUD pp |
| Deluxe Suite                | 22660 AUD pp |
| Prestige Suite - Deck 5     | 27300 AUD pp |
| Prestige Suite - Deck 6     | 28540 AUD pp |
| Owner's Suite               | 34726 AUD pp |



## PRICING

### 13-Jul-2025 to 23-Jul-2025

|                           |              |
|---------------------------|--------------|
| DELUXE STATEROOM          | 14180 AUD pp |
| PRESTIGE STATEROOM DECK 4 | 15720 AUD pp |
| PRESTIGE STATEROOM DECK 5 | 16490 AUD pp |
| PRESTIGE STATEROOM DECK 6 | 17410 AUD pp |
| Deluxe Suite Deck 4       | 22660 AUD pp |
| Deluxe Suite Deck 5       | 22660 AUD pp |
| Deluxe Suite Deck 6       | 22660 AUD pp |
| DELUXE SUITE              | 22660 AUD pp |
| PRESTIGE SUITE DECK 5     | 27300 AUD pp |
| PRESTIGE SUITE DECK 6     | 28540 AUD pp |
| Privilege Suite Deck 6    | 29460 AUD pp |
| PRIVILEGE SUITE           | 29460 AUD pp |
| Grand Deluxe Suite Deck 6 | 30380 AUD pp |
| GRAND DELUXE SUITE        | 30380 AUD pp |
| OWNER'S SUITE             | 34726 AUD pp |

|                           |              |
|---------------------------|--------------|
| DELUXE STATEROOM          | 14180 AUD pp |
| PRESTIGE STATEROOM DECK 4 | 15720 AUD pp |
| PRESTIGE STATEROOM DECK 5 | 16490 AUD pp |
| PRESTIGE STATEROOM DECK 6 | 17410 AUD pp |
| DELUXE SUITE              | 22660 AUD pp |
| Deluxe Suite Deck 4       | 22660 AUD pp |
| Deluxe Suite Deck 5       | 22660 AUD pp |
| Deluxe Suite Deck 6       | 22660 AUD pp |
| PRESTIGE SUITE DECK 5     | 27300 AUD pp |
| PRESTIGE SUITE DECK 6     | 28540 AUD pp |
| Privilege Suite Deck 6    | 29460 AUD pp |
| PRIVILEGE SUITE           | 29460 AUD pp |
| Grand Deluxe Suite Deck 6 | 30380 AUD pp |
| GRAND DELUXE SUITE        | 30380 AUD pp |
| OWNER'S SUITE             | 38180 AUD pp |

### 23-Jul-2025 to 02-Aug-2025





**wildearth-travel.com**

**info@wildearth-travel.com**

## PRICING

### 01-Aug-2025 to 11-Aug-2025

|                             |              |
|-----------------------------|--------------|
| Superior Stateroom          | 13090 AUD pp |
| DeLuxe Stateroom            | 14180 AUD pp |
| Prestige Stateroom - Deck 4 | 15720 AUD pp |
| Prestige Stateroom - Deck 5 | 16490 AUD pp |
| Prestige Stateroom - Deck 6 | 17410 AUD pp |
| Deluxe Suite                | 22660 AUD pp |
| Prestige Suite - Deck 5     | 27300 AUD pp |
| Prestige Suite - Deck 6     | 28540 AUD pp |
| Owner's Suite               | 38180 AUD pp |

### 02-Aug-2025 to 12-Aug-2025

|                           |              |
|---------------------------|--------------|
| DELUXE STATEROOM          | 14180 AUD pp |
| PRESTIGE STATEROOM DECK 4 | 15720 AUD pp |
| PRESTIGE STATEROOM DECK 5 | 16490 AUD pp |
| PRESTIGE STATEROOM DECK 6 | 17410 AUD pp |
| DELUXE SUITE              | 22660 AUD pp |
| Deluxe Suite Deck 6       | 22660 AUD pp |
| Deluxe Suite Deck 4       | 22660 AUD pp |
| Deluxe Suite Deck 5       | 22660 AUD pp |
| PRESTIGE SUITE DECK 5     | 27300 AUD pp |
| PRESTIGE SUITE DECK 6     | 28540 AUD pp |
| PRIVILEGE SUITE           | 29460 AUD pp |
| Privilege Suite Deck 6    | 29460 AUD pp |
| Grand Deluxe Suite Deck 6 | 30380 AUD pp |
| GRAND DELUXE SUITE        | 30380 AUD pp |
| OWNER'S SUITE             | 34726 AUD pp |

# Wild Earth Travel

*Small Ships, Big Adventures*

**wildearth-travel.com**

**info@wildearth-travel.com**

## PRICING

### 22-Aug-2025 to 01-Sep-2025

|                                  |                     |
|----------------------------------|---------------------|
| <b>DELUXE STATEROOM</b>          | <b>14180 AUD pp</b> |
| <b>PRESTIGE STATEROOM DECK 4</b> | <b>15720 AUD pp</b> |
| <b>PRESTIGE STATEROOM DECK 5</b> | <b>16490 AUD pp</b> |
| <b>PRESTIGE STATEROOM DECK 6</b> | <b>17410 AUD pp</b> |
| <b>Deluxe Suite Deck 5</b>       | <b>22660 AUD pp</b> |
| <b>Deluxe Suite Deck 6</b>       | <b>22660 AUD pp</b> |
| <b>DELUXE SUITE</b>              | <b>22660 AUD pp</b> |
| <b>Deluxe Suite Deck 4</b>       | <b>22660 AUD pp</b> |
| <b>PRESTIGE SUITE DECK 5</b>     | <b>27300 AUD pp</b> |
| <b>PRESTIGE SUITE DECK 6</b>     | <b>28540 AUD pp</b> |
| <b>Privilege Suite Deck 6</b>    | <b>29460 AUD pp</b> |
| <b>PRIVILEGE SUITE</b>           | <b>29460 AUD pp</b> |
| <b>Grand Deluxe Suite Deck 6</b> | <b>30380 AUD pp</b> |
| <b>GRAND DELUXE SUITE</b>        | <b>30380 AUD pp</b> |
| <b>OWNER'S SUITE</b>             | <b>38180 AUD pp</b> |

|                                    |                     |
|------------------------------------|---------------------|
| <b>Superior Stateroom</b>          | <b>13850 AUD pp</b> |
| <b>DeLuxe Stateroom</b>            | <b>15010 AUD pp</b> |
| <b>Prestige Stateroom - Deck 4</b> | <b>16640 AUD pp</b> |
| <b>Prestige Stateroom - Deck 5</b> | <b>17460 AUD pp</b> |
| <b>Prestige Stateroom - Deck 6</b> | <b>18440 AUD pp</b> |
| <b>Deluxe Suite</b>                | <b>24020 AUD pp</b> |
| <b>Prestige Suite - Deck 5</b>     | <b>28950 AUD pp</b> |
| <b>Prestige Suite - Deck 6</b>     | <b>30270 AUD pp</b> |
| <b>Owner's Suite</b>               | <b>34726 AUD pp</b> |

### 31-Aug-2025 to 10-Sep-2025



# Wild Earth Travel

*Small Ships, Big Adventures*

**wildearth-travel.com**

**info@wildearth-travel.com**

## PRICING

### 01-Sep-2025 to 11-Sep-2025

|                           |              |
|---------------------------|--------------|
| DELUXE STATEROOM          | 14180 AUD pp |
| PRESTIGE STATEROOM DECK 4 | 15720 AUD pp |
| PRESTIGE STATEROOM DECK 5 | 16490 AUD pp |
| PRESTIGE STATEROOM DECK 6 | 17410 AUD pp |
| Deluxe Suite Deck 6       | 22660 AUD pp |
| Deluxe Suite Deck 5       | 22660 AUD pp |
| Deluxe Suite Deck 4       | 22660 AUD pp |
| DELUXE SUITE              | 22660 AUD pp |
| PRESTIGE SUITE DECK 5     | 27300 AUD pp |
| PRESTIGE SUITE DECK 6     | 28540 AUD pp |
| PRIVILEGE SUITE           | 29460 AUD pp |
| Privilege Suite Deck 6    | 29460 AUD pp |
| Grand Deluxe Suite Deck 6 | 30380 AUD pp |
| GRAND DELUXE SUITE        | 30380 AUD pp |
| OWNER'S SUITE             | 34726 AUD pp |

|                           |              |
|---------------------------|--------------|
| DELUXE STATEROOM          | 14180 AUD pp |
| PRESTIGE STATEROOM DECK 4 | 15720 AUD pp |
| PRESTIGE STATEROOM DECK 5 | 16490 AUD pp |
| PRESTIGE STATEROOM DECK 6 | 17410 AUD pp |
| Deluxe Suite Deck 5       | 22660 AUD pp |
| Deluxe Suite Deck 4       | 22660 AUD pp |
| DELUXE SUITE              | 22660 AUD pp |
| Deluxe Suite Deck 6       | 22660 AUD pp |
| PRESTIGE SUITE DECK 5     | 27300 AUD pp |
| PRESTIGE SUITE DECK 6     | 28540 AUD pp |
| PRIVILEGE SUITE           | 29460 AUD pp |
| Privilege Suite Deck 6    | 29460 AUD pp |
| GRAND DELUXE SUITE        | 30380 AUD pp |
| Grand Deluxe Suite Deck 6 | 30380 AUD pp |
| OWNER'S SUITE             | 38180 AUD pp |

### 11-Sep-2025 to 21-Sep-2025

# Wild Earth Travel

*Small Ships, Big Adventures*

**wildearth-travel.com**

**info@wildearth-travel.com**

## PRICING

### 21-Sep-2025 to 01-Oct-2025

|                           |              |
|---------------------------|--------------|
| Deluxe Stateroom          | 13350 AUD pp |
| Prestige Deck 4           | 14790 AUD pp |
| Prestige Deck 5           | 15520 AUD pp |
| Prestige Deck 6           | 16380 AUD pp |
| Deluxe Suite Deck 4       | 21300 AUD pp |
| Deluxe Suite Deck 5       | 21300 AUD pp |
| Deluxe Suite Deck 6       | 21300 AUD pp |
| Deluxe Suite Deck 3       | 21300 AUD pp |
| Prestige Deck 5 Suite     | 25650 AUD pp |
| Prestige Deck 6 Suite     | 26810 AUD pp |
| Privilege Suite Deck 6    | 27680 AUD pp |
| Privilege Suite Deck 5    | 27680 AUD pp |
| Grand Deluxe Suite Deck 5 | 28540 AUD pp |
| Grand Deluxe Suite Deck 6 | 28540 AUD pp |

|                           |              |
|---------------------------|--------------|
| Deluxe Stateroom          | 16290 AUD pp |
| Prestige Deck 4           | 18070 AUD pp |
| Prestige Deck 5           | 18960 AUD pp |
| Prestige Deck 6           | 20040 AUD pp |
| Deluxe Suite Deck 6       | 26120 AUD pp |
| Deluxe Suite Deck 5       | 26120 AUD pp |
| Deluxe Suite Deck 3       | 26120 AUD pp |
| Deluxe Suite Deck 4       | 26120 AUD pp |
| Prestige Deck 5 Suite     | 31490 AUD pp |
| Prestige Deck 6 Suite     | 32920 AUD pp |
| Privilege Suite Deck 6    | 34000 AUD pp |
| Privilege Suite Deck 5    | 34000 AUD pp |
| Grand Deluxe Suite Deck 6 | 35060 AUD pp |
| Grand Deluxe Suite Deck 5 | 35060 AUD pp |

### 13-May-2026 to 23-May-2026





**wildearth-travel.com**

**info@wildearth-travel.com**

## PRICING

### 23-May-2026 to 02-Jun-2026

|                           |              |
|---------------------------|--------------|
| Deluxe Stateroom          | 15440 AUD pp |
| Prestige Deck 4           | 17120 AUD pp |
| Prestige Deck 5           | 17970 AUD pp |
| Prestige Deck 6           | 18990 AUD pp |
| Deluxe Suite Deck 4       | 24730 AUD pp |
| Deluxe Suite Deck 5       | 24730 AUD pp |
| Deluxe Suite Deck 3       | 24730 AUD pp |
| Deluxe Suite Deck 6       | 24730 AUD pp |
| Prestige Deck 5 Suite     | 29800 AUD pp |
| Prestige Deck 6 Suite     | 31150 AUD pp |
| Privilege Suite Deck 6    | 32170 AUD pp |
| Privilege Suite Deck 5    | 32170 AUD pp |
| Grand Deluxe Suite Deck 5 | 33170 AUD pp |
| Grand Deluxe Suite Deck 6 | 33170 AUD pp |

|                           |              |
|---------------------------|--------------|
| Deluxe Stateroom          | 15430 AUD pp |
| Prestige Deck 4           | 17110 AUD pp |
| Prestige Deck 5           | 17960 AUD pp |
| Prestige Deck 6           | 18980 AUD pp |
| Deluxe Suite Deck 3       | 24720 AUD pp |
| Deluxe Suite Deck 4       | 24720 AUD pp |
| Deluxe Suite Deck 5       | 24720 AUD pp |
| Deluxe Suite Deck 6       | 24720 AUD pp |
| Prestige Deck 5 Suite     | 29790 AUD pp |
| Prestige Deck 6 Suite     | 31140 AUD pp |
| Privilege Suite Deck 6    | 32160 AUD pp |
| Privilege Suite Deck 5    | 32160 AUD pp |
| Grand Deluxe Suite Deck 5 | 33160 AUD pp |
| Grand Deluxe Suite Deck 6 | 33160 AUD pp |

### 02-Jun-2026 to 12-Jun-2026

# Wild Earth Travel

*Small Ships, Big Adventures*

**wildearth-travel.com**

**info@wildearth-travel.com**

## PRICING

### 12-Jun-2026 to 22-Jun-2026

|                           |              |
|---------------------------|--------------|
| Deluxe Stateroom          | 15440 AUD pp |
| Prestige Deck 4           | 17120 AUD pp |
| Prestige Deck 5           | 17970 AUD pp |
| Prestige Deck 6           | 18990 AUD pp |
| Deluxe Suite Deck 6       | 24730 AUD pp |
| Deluxe Suite Deck 4       | 24730 AUD pp |
| Deluxe Suite Deck 5       | 24730 AUD pp |
| Deluxe Suite Deck 3       | 24730 AUD pp |
| Prestige Deck 5 Suite     | 29800 AUD pp |
| Prestige Deck 6 Suite     | 31150 AUD pp |
| Privilege Suite Deck 6    | 32170 AUD pp |
| Privilege Suite Deck 5    | 32170 AUD pp |
| Grand Deluxe Suite Deck 5 | 33170 AUD pp |
| Grand Deluxe Suite Deck 6 | 33170 AUD pp |

### 22-Jun-2026 to 02-Jul-2026

|                           |              |
|---------------------------|--------------|
| Deluxe Stateroom          | 15430 AUD pp |
| Prestige Deck 4           | 17110 AUD pp |
| Prestige Deck 5           | 17960 AUD pp |
| Prestige Deck 6           | 18980 AUD pp |
| Deluxe Suite Deck 4       | 24720 AUD pp |
| Deluxe Suite Deck 6       | 24720 AUD pp |
| Deluxe Suite Deck 3       | 24720 AUD pp |
| Deluxe Suite Deck 5       | 24720 AUD pp |
| Prestige Deck 5 Suite     | 29790 AUD pp |
| Prestige Deck 6 Suite     | 31140 AUD pp |
| Privilege Suite Deck 5    | 32160 AUD pp |
| Privilege Suite Deck 6    | 32160 AUD pp |
| Grand Deluxe Suite Deck 5 | 33160 AUD pp |
| Grand Deluxe Suite Deck 6 | 33160 AUD pp |

### 29-Jun-2026 to 09-Jul-2026

|                       |              |
|-----------------------|--------------|
| Superior Stateroom    | 15040 AUD pp |
| Deluxe Stateroom      | 16290 AUD pp |
| Prestige Deck 4       | 18070 AUD pp |
| Prestige Deck 5       | 18960 AUD pp |
| Prestige Deck 6       | 20040 AUD pp |
| Deluxe Suite          | 26120 AUD pp |
| Prestige Deck 5 Suite | 31490 AUD pp |
| Prestige Deck 6 Suite | 32920 AUD pp |



# Wild Earth Travel

*Small Ships, Big Adventures*

**wildearth-travel.com**

**info@wildearth-travel.com**

## PRICING

### 02-Jul-2026 to 12-Jul-2026

|                           |              |
|---------------------------|--------------|
| Deluxe Stateroom          | 16300 AUD pp |
| Prestige Deck 4           | 18080 AUD pp |
| Prestige Deck 5           | 18970 AUD pp |
| Prestige Deck 6           | 20050 AUD pp |
| Deluxe Suite Deck 3       | 26130 AUD pp |
| Deluxe Suite Deck 6       | 26130 AUD pp |
| Deluxe Suite Deck 4       | 26130 AUD pp |
| Deluxe Suite Deck 5       | 26130 AUD pp |
| Prestige Deck 5 Suite     | 31500 AUD pp |
| Prestige Deck 6 Suite     | 32930 AUD pp |
| Privilege Suite Deck 5    | 34010 AUD pp |
| Privilege Suite Deck 6    | 34010 AUD pp |
| Grand Deluxe Suite Deck 5 | 35070 AUD pp |
| Grand Deluxe Suite Deck 6 | 35070 AUD pp |

|                           |              |
|---------------------------|--------------|
| Deluxe Stateroom          | 16290 AUD pp |
| Prestige Deck 4           | 18070 AUD pp |
| Prestige Deck 5           | 18960 AUD pp |
| Prestige Deck 6           | 20040 AUD pp |
| Deluxe Suite Deck 5       | 26120 AUD pp |
| Deluxe Suite Deck 4       | 26120 AUD pp |
| Deluxe Suite Deck 6       | 26120 AUD pp |
| Deluxe Suite Deck 3       | 26120 AUD pp |
| Prestige Deck 5 Suite     | 31490 AUD pp |
| Prestige Deck 6 Suite     | 32920 AUD pp |
| Privilege Suite Deck 6    | 34000 AUD pp |
| Privilege Suite Deck 5    | 34000 AUD pp |
| Grand Deluxe Suite Deck 6 | 35060 AUD pp |
| Grand Deluxe Suite Deck 5 | 35060 AUD pp |

### 09-Jul-2026 to 19-Jul-2026

|                       |              |
|-----------------------|--------------|
| Superior Stateroom    | 14260 AUD pp |
| Deluxe Stateroom      | 15440 AUD pp |
| Prestige Deck 4       | 17120 AUD pp |
| Prestige Deck 5       | 17970 AUD pp |
| Prestige Deck 6       | 18990 AUD pp |
| Deluxe Suite          | 24730 AUD pp |
| Prestige Deck 5 Suite | 29800 AUD pp |
| Prestige Deck 6 Suite | 31150 AUD pp |

### 12-Jul-2026 to 22-Jul-2026



**0800 945 3327** (within New Zealand) | +64 (0) 3 365 1355 | **1800 107 715** (within Australia)

info@wildearth-travel.com | wildearth-travel.com

# Wild Earth Travel

*Small Ships, Big Adventures*

**wildearth-travel.com**

**info@wildearth-travel.com**

## PRICING

### 19-Jul-2026 to 29-Jul-2026

|                       |              |
|-----------------------|--------------|
| Superior Stateroom    | 14250 AUD pp |
| Deluxe Stateroom      | 15430 AUD pp |
| Prestige Deck 4       | 17110 AUD pp |
| Prestige Deck 5       | 17960 AUD pp |
| Prestige Deck 6       | 18980 AUD pp |
| Deluxe Suite          | 24720 AUD pp |
| Prestige Deck 5 Suite | 29790 AUD pp |
| Prestige Deck 6 Suite | 31140 AUD pp |

### 22-Jul-2026 to 01-Aug-2026

|                           |              |
|---------------------------|--------------|
| Deluxe Stateroom          | 16300 AUD pp |
| Prestige Deck 4           | 18080 AUD pp |
| Prestige Deck 5           | 18970 AUD pp |
| Prestige Deck 6           | 20050 AUD pp |
| Deluxe Suite Deck 5       | 26130 AUD pp |
| Deluxe Suite Deck 6       | 26130 AUD pp |
| Deluxe Suite Deck 4       | 26130 AUD pp |
| Deluxe Suite Deck 3       | 26130 AUD pp |
| Prestige Deck 5 Suite     | 31500 AUD pp |
| Prestige Deck 6 Suite     | 32930 AUD pp |
| Privilege Suite Deck 5    | 34010 AUD pp |
| Privilege Suite Deck 6    | 34010 AUD pp |
| Grand Deluxe Suite Deck 5 | 35070 AUD pp |
| Grand Deluxe Suite Deck 6 | 35070 AUD pp |

### 01-Aug-2026 to 11-Aug-2026

|                           |              |
|---------------------------|--------------|
| Deluxe Stateroom          | 15430 AUD pp |
| Prestige Deck 4           | 17110 AUD pp |
| Prestige Deck 5           | 17960 AUD pp |
| Prestige Deck 6           | 18980 AUD pp |
| Deluxe Suite Deck 3       | 24720 AUD pp |
| Deluxe Suite Deck 4       | 24720 AUD pp |
| Deluxe Suite Deck 5       | 24720 AUD pp |
| Deluxe Suite Deck 6       | 24720 AUD pp |
| Prestige Deck 5 Suite     | 29790 AUD pp |
| Prestige Deck 6 Suite     | 31140 AUD pp |
| Privilege Suite Deck 6    | 32160 AUD pp |
| Privilege Suite Deck 5    | 32160 AUD pp |
| Grand Deluxe Suite Deck 6 | 33160 AUD pp |
| Grand Deluxe Suite Deck 5 | 33160 AUD pp |

# Wild Earth Travel

*Small Ships, Big Adventures*

**wildearth-travel.com**

**info@wildearth-travel.com**

## PRICING

### 11-Aug-2026 to 21-Aug-2026

|                           |              |
|---------------------------|--------------|
| Deluxe Stateroom          | 16300 AUD pp |
| Prestige Deck 4           | 18080 AUD pp |
| Prestige Deck 5           | 18970 AUD pp |
| Prestige Deck 6           | 20050 AUD pp |
| Deluxe Suite Deck 3       | 26130 AUD pp |
| Deluxe Suite Deck 6       | 26130 AUD pp |
| Deluxe Suite Deck 4       | 26130 AUD pp |
| Deluxe Suite Deck 5       | 26130 AUD pp |
| Prestige Deck 5 Suite     | 31500 AUD pp |
| Prestige Deck 6 Suite     | 32930 AUD pp |
| Privilege Suite Deck 5    | 34010 AUD pp |
| Privilege Suite Deck 6    | 34010 AUD pp |
| Grand Deluxe Suite Deck 6 | 35070 AUD pp |
| Grand Deluxe Suite Deck 5 | 35070 AUD pp |

### 18-Aug-2026 to 28-Aug-2026

|                       |              |
|-----------------------|--------------|
| Superior Stateroom    | 14260 AUD pp |
| Deluxe Stateroom      | 15440 AUD pp |
| Prestige Deck 4       | 17120 AUD pp |
| Prestige Deck 5       | 17970 AUD pp |
| Prestige Deck 6       | 18990 AUD pp |
| Deluxe Suite          | 24730 AUD pp |
| Prestige Deck 5 Suite | 29800 AUD pp |
| Prestige Deck 6 Suite | 31150 AUD pp |

### 28-Aug-2026 to 07-Sep-2026

|                       |              |
|-----------------------|--------------|
| Superior Stateroom    | 14250 AUD pp |
| Deluxe Stateroom      | 15430 AUD pp |
| Prestige Deck 4       | 17110 AUD pp |
| Prestige Deck 5       | 17960 AUD pp |
| Prestige Deck 6       | 18980 AUD pp |
| Deluxe Suite          | 24720 AUD pp |
| Prestige Deck 5 Suite | 29790 AUD pp |
| Prestige Deck 6 Suite | 31140 AUD pp |

**Wild Earth Travel**  
*Small Ships, Big Adventures*

**0800 945 3327** (within New Zealand) | +64 (0) 3 365 1355 | **1800 107 715** (within Australia)

info@wildearth-travel.com | wildearth-travel.com



# Wild Earth Travel

*Small Ships, Big Adventures*

**wildearth-travel.com**

**info@wildearth-travel.com**

## PRICING

**07-Sep-2026 to 17-Sep-2026**

|                              |                     |
|------------------------------|---------------------|
| <b>Superior Stateroom</b>    | <b>14260 AUD pp</b> |
| <b>Deluxe Stateroom</b>      | <b>15440 AUD pp</b> |
| <b>Prestige Deck 4</b>       | <b>17120 AUD pp</b> |
| <b>Prestige Deck 5</b>       | <b>17970 AUD pp</b> |
| <b>Prestige Deck 6</b>       | <b>18990 AUD pp</b> |
| <b>Deluxe Suite</b>          | <b>24730 AUD pp</b> |
| <b>Prestige Deck 5 Suite</b> | <b>29800 AUD pp</b> |
| <b>Prestige Deck 6 Suite</b> | <b>31150 AUD pp</b> |

**Port Taxes and Fees. From 673  
AUD pp**

**ADDITIONAL CHARGES:**

**Wild Earth Travel**  
*Small Ships, Big Adventures*

**0800 945 3327** (within New Zealand) | +64 (0) 3 365 1355 | **1800 107 715** (within Australia)

info@wildearth-travel.com | **wildearth-travel.com**



[wildearth-travel.com](http://wildearth-travel.com)

[info@wildearth-travel.com](mailto:info@wildearth-travel.com)

## SPECIAL OFFERS

Online prices reflect the current brochure fare savings of up to 30%. Prices may change based on demand. Terms and conditions apply. This special offer is subject to availability. Please contact us for more details.

### Optional extras & upgrades

#### Kimberley 2025 Fly, Stay & Cruise Packages

Your Kimberley 2025 offer includes: - 10-night Kimberley luxury expedition on board PONANT's Le Jacques-Cartier or Le Soléal - Return flights from major Australian & New Zealand capital cities - 1 night's pre-cruise accommodation - Airport and hotel transfers on arrival - All Zodiac outings & shore excursions - Onboard lectures & educative talks - All meals & open bar - 24-hour room service - Complimentary unlimited Wi-Fi - Butler service in suites. Terms and Conditions apply, please contact us for more details.



**0800 945 3327** (within New Zealand) | +64 (0) 3 365 1355 | **1800 107 715** (within Australia)

[info@wildearth-travel.com](mailto:info@wildearth-travel.com) | [wildearth-travel.com](http://wildearth-travel.com)