

# Wild Earth Travel

*Small Ships, Big Adventures*

**wildearth-travel.com**

**info@wildearth-travel.com**

## ATLANTIC ODYSSEY FROM THE IBERIAN PENINSULA TO THE CANARY ISLANDS

Majestic volcanoes, lush green valleys, and cities with diverse heritages set the scene for this cultural journey with Franck Ferrand, between the Moroccan coast and the Spanish and Portuguese shores. From Tangier to Casablanca, from Madeira to the Canary Islands, immerse yourself in the heart of vibrant cities and discover their souks, squares, arcades, alleyways and bustling markets. Inland, the spectacle of lava landscapes on the enigmatic Lanzarote, the lunar island of fire, or in the heart of the Laurisilva of Madeira, a UNESCO World Heritage Site, invites tranquility.



### ITINERARY

#### Day 1 Málaga \*

A historical and festive town, Malaga is located in Andalusia, on the Costa del Sol. Between the marina and the beaches, the seaside promenade of La Farola offers an ideal setting for strolling and relaxing. Set slightly further back, the Malagueta bullring is one of the emblematic sites of the city. From the hill overlooking the old town, one can see Gibralfaro castle and the Alcazaba, two fortified ensembles rising out from the cypresses and maritime pines. To visit Pablo Picasso's birthplace, you will go first to the courtly plaza de la Merced. A few streets back from here, you can explore the museum dedicated to the artist, in the Buenavista palace.

#### Day 2 Tangier \*

Wild Earth Travel

*Small Ships, Big Adventures*

**0800 945 3327** (within New Zealand) | +64 (0) 3 365 1355 | **1800 107 715** (within Australia)

info@wildearth-travel.com | **wildearth-travel.com**



# Wild Earth Travel

*Small Ships, Big Adventures*

**wildearth-travel.com**

**info@wildearth-travel.com**

Nestling in the Bay of Tangier, this bewitching Moroccan city lies at the northwestern tip of the country, along the famous Strait of Gibraltar. Following in the footsteps of the writers and artists inspired and seduced by the city's climate and setting, you'll love its rich landscapes and multicultural charm. You'll instantly understand as soon as you set foot in the heart of the Medina. An architectural masterpiece, the Kasbah is your gateway to the Sultan's Palace and its gardens. If you prefer beaches to museums, you can relax just a few minutes from the city on the beautiful sweep of sand bathed by the Atlantic Ocean.

## Day 3 Casablanca \*

Situated along the Atlantic coast, Casablanca is the very image of contemporary Morocco: Westernised and cosmopolitan. Exploring the architectural heritage of the "White City" tells you all you need to know about its cultural and historical diversity. Breathtaking highlights include the majestic Hassan II Mosque, considered to be one of the greatest religious buildings in the world. You can explore the narrow alleys of the old Medina, which stand in sharp contrast to the surrounding modern architecture. To get the most from the seafront, the Ain Diab Corniche provides a pleasant place for strolling with easy access to the beach.

## Day 4 At sea \*

During your journey at sea, make the most of the many services and activities on board. Treat yourself to a moment of relaxation in the spa or stay in shape in the fitness centre. Depending on the season, let yourself be tempted by the swimming pool or a spot of sunbathing. This journey without a port of call will also be an opportunity to enjoy the conferences or shows proposed on board, depending on the activities offered, or to do some shopping in the boutique or to meet the PONANT photographers in their dedicated space. As for lovers of the open sea, they will be able to visit the ship's upper deck to admire the spectacle of the waves and perhaps be lucky enough to observe marine species. A truly enchanted interlude, combining comfort, rest and entertainment.

## Day 5 Funchal, Madeira \*

This attractive capital of Madeira is located on the southern coast of the island. The walkways of the old town are lined with azulejos, or multi-coloured mosaics. If you follow these patterns, they'll lead you to the appetising Mercado dos Lavradores market stands, the Frederico de Freitas museum, and the golden panelling of the Cathedral de la Se. Along the waterfront, the palm tree-shaded promenade leads you to the telefericos de Monte, Madeira's cable cars. Its panoramic cabins transport you over the city to top of Monte, where you can see the picturesque botanical garden.

## Day 6 At Sea \*

During your journey at sea, make the most of the many services and activities on board. Treat yourself to a moment of relaxation in the spa or stay in shape in the fitness centre. Depending on the season, let yourself be tempted by the swimming pool or a spot of sunbathing. This journey without a port of call will also be an opportunity to enjoy the conferences or shows proposed on board, depending on the activities offered, or to do some shopping in the boutique or to meet the PONANT photographers in their dedicated space. As for lovers of the open sea, they will be able to visit the ship's upper deck to admire the spectacle of the waves and perhaps be lucky enough to observe marine species. A truly enchanted interlude, combining comfort, rest and entertainment.

## Day 7 Santa Cruz de La Palma, Canary Islands \*

The capital of the island of Palma, Santa Cruz de la Palma is the pearl of the Canaries. Founded in 1493 by the conquistador Alonso Fernandez de Lugo, the city has preserved a large and atypical architectural heritage from its colonial past, with its traditional Canarian houses adorned with brightly coloured wooden balconies, its cobbled streets, its sumptuous palaces and its numerous religious buildings. The Santa Catalina Castle is the symbol of the city. This 16th century military fortification helped defend the city from repeated attacks by French privateers.

## Day 8 Arrecife de Lanzarote, Canary Islands \*

Established on a coast sprinkled with cliffs, Arrecife has a pleasant beach and a lagoon full of charm, Charca of San Gines, where the fishermen anchor their boats. The city also proposes places fed by history and culture, such as the

Wild Earth Travel

*Small Ships, Big Adventures*

**0800 945 3327** (within New Zealand) | +64 (0) 3 365 1355 | **1800 107 715** (within Australia)

info@wildearth-travel.com | **wildearth-travel.com**





# Wild Earth Travel

*Small Ships, Big Adventures*

**wildearth-travel.com**

**info@wildearth-travel.com**

castle San Gabriel, former fort of defense of the city.

## Day 9 Las Palmas de Gran Canaria, Canary Islands \*

A stopover of sunny climes, Las Palmas is located on the north-east coast of Gran Canaria. A few streets away from Puerto de la Luz port, you'll discover the vast Las Canteras beach, bordered with the town's characteristic palms. You'll find these palms are all over Las Palmas, in the streets and squares, especially on the plaza de Santa Ana in the heart of the historical district. It feels like you've travelled back in time here, as you stand looking at the tall houses beside the Santa Ana cathedral. Very close by, you can visit the Casa de Colon, a museum dedicated to the famous explorer. The museum is housed in the palace belonging to the island's former governor. Chances are, you'll be drawn to the covered Vegueta market to partake in some daily life along with the locals and taste some unfamiliar dishes.

Please note: \*

Itineraries are subject to change.

Wild Earth Travel  
*Small Ships, Big Adventures*

**0800 945 3327** (within New Zealand) | +64 (0) 3 365 1355 | **1800 107 715** (within Australia)

info@wildearth-travel.com | **wildearth-travel.com**



# Wild Earth Travel

*Small Ships, Big Adventures*

**wildearth-travel.com**

**info@wildearth-travel.com**

## YOUR SHIP: LE BOUGAINVILLE

**YOUR SHIP:** Le Bougainville

**VESSEL TYPE:** Luxury

**LENGTH:**

**PASSENGER CAPACITY:** 92 cabins

**BUILT/REFURBISHED:** 2017/2018

Featuring innovative and environmentally-friendly equipment, elegantly designed cabins, spacious suites with large windows, and lounge areas that open onto the outside, this new limited-capacity yacht boasting just 92 cabins and suites will offer you a truly unique cruising experience.

As the first ship in a new series that remains true to the Ponant spirit, Le Bougainville will embody the unique atmosphere that is the cruise line's hallmark: a subtle blend of refinement, intimacy and comfort.

Aboard this ship that flies the French flag, you will experience the incomparable pleasure of an intimate cruise, with the possibility of exploring an ever-increasing range of destinations in an ethnic-chic ambiance with luxury service.

Experience a luxurious setting where the accent is on authenticity and passion for travel.

### RESTAURANTS

As it is an essential part of French culture, gastronomy will naturally have pride of place aboard this new ship. Through its two restaurants, Le Bougainville will invite you on a journey to elegance and epicureanism.

In a relaxed atmosphere, a first dining area located on Deck 3

and able to seat 70 will serve grilled meats daily, along with a variety of salads and desserts.

To the back of Deck 4, you will find a 260 m<sup>2</sup> panoramic restaurant which can accommodate all of our passengers in a single sitting. Designed differently to that on our other ships, this dining area, which opens onto the outside, will have a buffet of salads, desserts and cheeses at your disposal. Our discreet and attentive crew will provide table service for hot meals.

### PUBLIC AREAS

Like Le Boreal and its sisterships, Le Bougainville has many common areas that are designed and equipped to meet all of your needs while preserving the intimacy of each passenger.

A 140 m<sup>2</sup> reception area includes:

A reception/concierge desk, An excursions desk, The ship's administrative services, The sales office, manned by our Guest Relations Officer, Our 50 m<sup>2</sup> boutique which sells clothing, jewellery, beauty products, postcards and various accessories, Toilets accessible to passengers with reduced mobility.

A new hydraulic platform with adjustable height provides: Easier boarding than on any other cruise ship, Easier Zodiac embarkation and disembarkation for expeditions, Easier access to the sea for swimming and practising various water sports such as kayaking or paddle-boarding.

A pool deck offering: A pool with a panoramic view, equipped with a counter-current swimming system, A pleasant solarium, An outdoor bar and lounge with armchairs and sofas.

A 200 m<sup>2</sup> main lounge which can accommodate all of our passengers to share convivial moments and to host activities organised during the day or evening.

Wild Earth Travel

*Small Ships, Big Adventures*

**0800 945 3327** (within New Zealand) | +64 (0) 3 365 1355 | **1800 107 715** (within Australia)

info@wildearth-travel.com | wildearth-travel.com



# Wild Earth Travel

*Small Ships, Big Adventures*

**wildearth-travel.com**

**info@wildearth-travel.com**

Lastly, a theatre that seats 188, equipped with: The latest sound and lighting technology, A LED wall as the stage backdrop, for the projection of high-resolution images and videos.



and videos.

Wild Earth Travel

*Small Ships, Big Adventures*

**0800 945 3327** (within New Zealand) | +64 (0) 3 365 1355 | **1800 107 715** (within Australia)

info@wildearth-travel.com | **wildearth-travel.com**



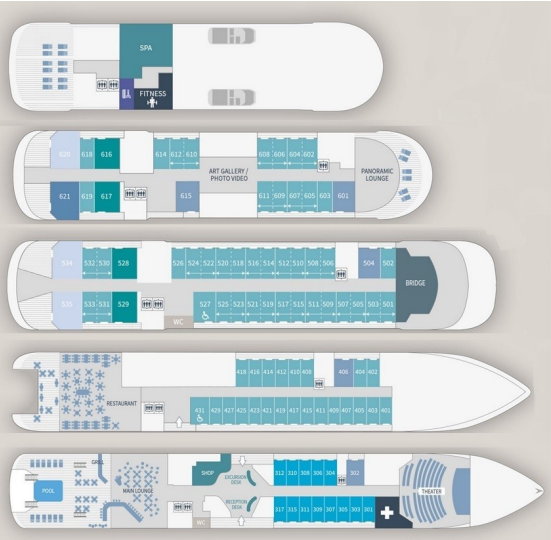


# Wild Earth Travel

*Small Ships, Big Adventures*

[wildearth-travel.com](http://wildearth-travel.com)
[info@wildearth-travel.com](mailto:info@wildearth-travel.com)

## INSIDE YOUR SHIP



- Owner's Suite  
Deck 6
- Privilege Suites  
Deck 5-6
- Grand Deluxe Suites  
Deck 5-6
- Prestige Suites  
Deck 5-6
- Deluxe Suites  
Deck 5-6
- Prestige Cabins  
Deck 4-5-6
- Deluxe Cabins  
Deck 3

Deluxe Stateroom



Deluxe Suite



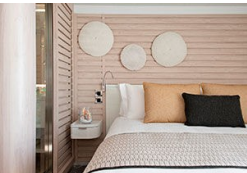
Deluxe Suite Deck 3



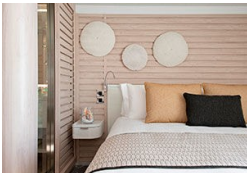
Deluxe Suite Deck 4



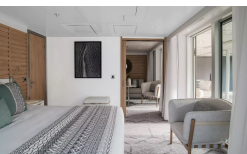
Deluxe Suite Deck 5



Deluxe Suite Deck 6



Grand Deluxe Suite



Grand Deluxe Suite Deck 5





# Wild Earth Travel

*Small Ships, Big Adventures*

0800 945 3327 (within New Zealand) | +64 (0) 3 365 1355 | 1800 107 715 (within Australia)

[info@wildearth-travel.com](mailto:info@wildearth-travel.com) | [wildearth-travel.com](http://wildearth-travel.com)



# Wild Earth Travel

*Small Ships, Big Adventures*

**wildearth-travel.com**

**info@wildearth-travel.com**

## PRICING

### 17-Nov-2025 to 25-Nov-2025

Deluxe Stateroom	7840 AUD pp
Prestige Deck 4	8240 AUD pp
Prestige Deck 5	8510 AUD pp
Prestige Deck 6	8820 AUD pp
Deluxe Suite Deck 5	11870 AUD pp
Deluxe Suite Deck 4	11870 AUD pp
Deluxe Suite Deck 3	11870 AUD pp
Deluxe Suite Deck 6	11870 AUD pp
Prestige Deck 5 Suite	12780 AUD pp
Prestige Deck 6 Suite	13200 AUD pp
Privilege Suite Deck 5	13530 AUD pp
Privilege Suite Deck 6	13530 AUD pp
Grand Deluxe Suite Deck 5	13930 AUD pp
Grand Deluxe Suite Deck 6	13930 AUD pp

### 21-Dec-2025 to 29-Dec-2025

Deluxe Stateroom	8650 AUD pp
Prestige Stateroom Deck 4	9100 AUD pp
Prestige Stateroom Deck 5	9390 AUD pp
Prestige Stateroom Deck 6	9740 AUD pp
Deluxe Suite Deck 6	13130 AUD pp
Deluxe Suite Deck 5	13130 AUD pp
Deluxe Suite Deck 4	13130 AUD pp
Deluxe Suite	13130 AUD pp
Prestige Suite Deck 5	14140 AUD pp
Prestige Suite Deck 6	14610 AUD pp
Privilege Suite	14970 AUD pp
Privilege Suite Deck 6	14970 AUD pp
Grand Deluxe Suite	15420 AUD pp
Grand Deluxe Suite Deck 6	15420 AUD pp
Owner's Suite	15890 AUD pp



# Wild Earth Travel

*Small Ships, Big Adventures*

**wildearth-travel.com**

**info@wildearth-travel.com**

## PRICING

**07-Nov-2026 to 15-Nov-2026**

<b>Deluxe Stateroom</b>	<b>6340 AUD pp</b>
<b>Prestige Deck 4</b>	<b>6670 AUD pp</b>
<b>Prestige Deck 5</b>	<b>6870 AUD pp</b>
<b>Prestige Deck 6</b>	<b>7120 AUD pp</b>
<b>Deluxe Suite Deck 4</b>	<b>9550 AUD pp</b>
<b>Deluxe Suite Deck 6</b>	<b>9550 AUD pp</b>
<b>Deluxe Suite Deck 3</b>	<b>9550 AUD pp</b>
<b>Deluxe Suite Deck 5</b>	<b>9550 AUD pp</b>
<b>Prestige Deck 5 Suite</b>	<b>10260 AUD pp</b>
<b>Prestige Deck 6 Suite</b>	<b>10600 AUD pp</b>
<b>Privilege Suite Deck 5</b>	<b>10850 AUD pp</b>
<b>Privilege Suite Deck 6</b>	<b>10850 AUD pp</b>
<b>Grand Deluxe Suite Deck 5</b>	<b>11180 AUD pp</b>
<b>Grand Deluxe Suite Deck 6</b>	<b>11180 AUD pp</b>

<b>Deluxe Stateroom</b>	<b>6340 AUD pp</b>
<b>Prestige Deck 4</b>	<b>6670 AUD pp</b>
<b>Prestige Deck 5</b>	<b>6870 AUD pp</b>
<b>Prestige Deck 6</b>	<b>7120 AUD pp</b>
<b>Deluxe Suite Deck 6</b>	<b>9550 AUD pp</b>
<b>Deluxe Suite Deck 3</b>	<b>9550 AUD pp</b>
<b>Deluxe Suite Deck 4</b>	<b>9550 AUD pp</b>
<b>Deluxe Suite Deck 5</b>	<b>9550 AUD pp</b>
<b>Prestige Deck 5 Suite</b>	<b>10260 AUD pp</b>
<b>Prestige Deck 6 Suite</b>	<b>10600 AUD pp</b>
<b>Privilege Suite Deck 5</b>	<b>10850 AUD pp</b>
<b>Privilege Suite Deck 6</b>	<b>10850 AUD pp</b>
<b>Grand Deluxe Suite Deck 5</b>	<b>11180 AUD pp</b>
<b>Grand Deluxe Suite Deck 6</b>	<b>11180 AUD pp</b>

**25-Nov-2026 to 03-Dec-2026**



Wild Earth Travel  
*Small Ships, Big Adventures*

**0800 945 3327** (within New Zealand) | +64 (0) 3 365 1355 | **1800 107 715** (within Australia)

info@wildearth-travel.com | wildearth-travel.com





# Wild Earth Travel

*Small Ships, Big Adventures*

**wildearth-travel.com**

**info@wildearth-travel.com**

## SPECIAL OFFERS

Online prices reflect the current brochure fare savings of up to 30%. Prices may change based on demand. Terms and conditions apply. This special offer is subject to availability. Please contact us for more details.

**Wild Earth Travel**

*Small Ships, Big Adventures*

**0800 945 3327** (within New Zealand) | +64 (0) 3 365 1355 | **1800 107 715** (within Australia)

info@wildearth-travel.com | **wildearth-travel.com**