

# Wild Earth Travel

*Small Ships, Big Adventures*

**wildearth-travel.com**

**info@wildearth-travel.com**

## ATLANTIC ODYSSEY FROM THE CANARY ISLANDS TO THE IBERIAN PENINSULA

Majestic volcanoes, lush green valleys and cities with a diverse and rich heritage form the backdrop to this wonderful journey between the Moroccan coast and the shores of Spain and Portugal. From Tangier to Casablanca, from Madeira to the Canary Islands, immerse yourself in the heart of vibrant cities and discover their souks, squares, arcades, alleyways and bustling markets. Inland, the spectacle of lava landscapes on the enigmatic Lanzarote, the lunar island of fire, or in the heart of the Laurisilva of Madeira, a UNESCO World Heritage Site, invites tranquillity.



### ITINERARY

#### Day 1 - Las Palmas de Gran Canaria, Canary Islands \*

A stopover of sunny climes, Las Palmas is located on the north-east coast of Gran Canaria. A few streets away from Puerto de la Luz port, you'll discover the vast Las Canteras beach, bordered with the town's characteristic palms. You'll find these palms are all over Las Palmas, in the streets and squares, especially on the plaza de Santa Ana in the heart of the historical district. It feels like you've travelled back in time here, as you stand looking at the tall houses beside the Santa Ana cathedral. Very close by, you can visit the Casa de Colon, a museum dedicated to the famous explorer. The museum is housed in the palace belonging to the island's former governor. Chances are, you'll be drawn to the covered Vegueta market to partake in some daily life along with the locals and taste some unfamiliar dishes.

Wild Earth Travel

*Small Ships, Big Adventures*

**0800 945 3327** (within New Zealand) | +64 (0) 3 365 1355 | **1800 107 715** (within Australia)

info@wildearth-travel.com | **wildearth-travel.com**

# Wild Earth Travel

*Small Ships, Big Adventures*

**wildearth-travel.com**

**info@wildearth-travel.com**

## Day 2 - Arrecife de Lanzarote, Canary Islands \*

Established on a coast sprinkled with cliffs, Arrecife has a pleasant beach and a lagoon full of charm, Charca of San Gines, where the fishermen anchor their boats. The city also proposes places fed by history and culture, such as the castle San Gabriel, former fort of defense of the city.

island. The walkways of the old town are lined with azulejos, or multi-coloured mosaics. If you follow these patterns, they'll lead you to the appetising Mercado dos Lavradores market stands, the Frederico de Freitas museum, and the golden panelling of the Cathedral de la Se. Along the waterfront, the palm tree-shaded promenade leads you to the telefericos de Monte, Madeira's cable cars. Its panoramic cabins transport you over the city to top of Monte, where you can see the picturesque botanical garden.

## Day 3 - San Sebastian de la Gomera, Canary Islands \*

La Gomera rises from the water like a mirage. This volcanic island in the Canaries features jagged cliffs, valleys covered in palm trees, and beaches of black sand bathing in crystal-clear waters. But its greatest treasure lies at its heart: an exceptional laurisilva, a laurel forest whose prehistoric vegetation has been preserved thanks to the microclimate on the island. This unique ecosystem, common a few million years ago in the tropics, forms the Garajonay National Park, listed as a UNESCO World Heritage Site. Like the birds, the Guanches contribute to the poetry of the island too, with their whistled language called Silbo. This magical-sounding, melodious language is also listed as World Heritage by UNESCO.

## Day 7 - At sea \*

During your journey at sea, make the most of the many services and activities on board. Treat yourself to a moment of relaxation in the spa or stay in shape in the fitness centre. Depending on the season, let yourself be tempted by the swimming pool or a spot of sunbathing. This journey without a port of call will also be an opportunity to enjoy the conferences or shows proposed on board, depending on the activities offered, or to do some shopping in the boutique or to meet the PONANT photographers in their dedicated space. As for lovers of the open sea, they will be able to visit the ship's upper deck to admire the spectacle of the waves and perhaps be lucky enough to observe marine species. A truly enchanted interlude, combining comfort, rest and entertainment.

## Day 4 - Santa Cruz de Tenerife, Canary Islands \*

The capital city of Tenerife is located on the north-east coast of the island. Close to the port is the monumental Plaza de España, bedecked with a fountain and plant sculptures. Around the plaza, you can admire the white marble Triunfo de la Candelaria obelisk, the historic casino of Santa Cruz and the majestic Guimera theatre. Not far from here, the picturesque Iglesia de la Concepcion church features the characteristic traits of Canaries architecture.

## Day 8 - Tangier \*

Nestling in the Bay of Tangier, this bewitching Moroccan city lies at the northwestern tip of the country, along the famous Strait of Gibraltar. Following in the footsteps of the writers and artists inspired and seduced by the city's climate and setting, you'll love its rich landscapes and multicultural charm. You'll instantly understand as soon as you set foot in the heart of the Medina. An architectural masterpiece, the Kasbah is your gateway to the Sultan's Palace and its gardens. If you prefer beaches to museums, you can relax just a few minutes from the city on the beautiful sweep of sand bathed by the Atlantic Ocean.

## Days 5 - 6 Funchal, Madeira \*

This attractive capital of Madeira is located on the southern coast of the

## Day 9 - Malaga \*

Wild Earth Travel

*Small Ships, Big Adventures*

**0800 945 3327** (within New Zealand) | +64 (0) 3 365 1355 | **1800 107 715** (within Australia)

info@wildearth-travel.com | **wildearth-travel.com**





# Wild Earth Travel

*Small Ships, Big Adventures*

**wildearth-travel.com**

**info@wildearth-travel.com**

A historical and festive town, Malaga is located in Andalusia, on the Costa del Sol. Between the marina and the beaches, the seaside promenade of La Farola offers an ideal setting for strolling and relaxing. Set slightly further back, the Malagueta bullring is one of the emblematic sites of the city. From the hill overlooking the old town, one can see Gibralfaro castle and the Alcazaba, two fortified ensembles rising out from the cypresses and maritime pines. To visit Pablo Picasso's birthplace, you will go first to the courtly plaza de la Merced. A few streets back from here, you can explore the museum dedicated to the artist, in the Buenavista palace.

Please note: \*

Itineraries are subject to change.

**Wild Earth Travel**

*Small Ships, Big Adventures*

**0800 945 3327** (within New Zealand) | +64 (0) 3 365 1355 | **1800 107 715** (within Australia)

info@wildearth-travel.com | **wildearth-travel.com**



# Wild Earth Travel

*Small Ships, Big Adventures*

**wildearth-travel.com**

**info@wildearth-travel.com**

## YOUR SHIP: LE BOUGAINVILLE

**YOUR SHIP:** Le Bougainville

**VESSEL TYPE:** Luxury

**LENGTH:**

**PASSENGER CAPACITY:** 92 cabins

**BUILT/REFURBISHED:** 2017/2018

Featuring innovative and environmentally-friendly equipment, elegantly designed cabins, spacious suites with large windows, and lounge areas that open onto the outside, this new limited-capacity yacht boasting just 92 cabins and suites will offer you a truly unique cruising experience.

As the first ship in a new series that remains true to the Ponant spirit, Le Bougainville will embody the unique atmosphere that is the cruise line's hallmark: a subtle blend of refinement, intimacy and comfort.

Aboard this ship that flies the French flag, you will experience the incomparable pleasure of an intimate cruise, with the possibility of exploring an ever-increasing range of destinations in an ethnic-chic ambiance with luxury service.

Experience a luxurious setting where the accent is on authenticity and passion for travel.

### RESTAURANTS

As it is an essential part of French culture, gastronomy will naturally have pride of place aboard this new ship. Through its two restaurants, Le Bougainville will invite you on a journey to elegance and epicureanism.

In a relaxed atmosphere, a first dining area located on Deck 3

and able to seat 70 will serve grilled meats daily, along with a variety of salads and desserts.

To the back of Deck 4, you will find a 260 m<sup>2</sup> panoramic restaurant which can accommodate all of our passengers in a single sitting. Designed differently to that on our other ships, this dining area, which opens onto the outside, will have a buffet of salads, desserts and cheeses at your disposal. Our discreet and attentive crew will provide table service for hot meals.

### PUBLIC AREAS

Like Le Boreal and its sisterships, Le Bougainville has many common areas that are designed and equipped to meet all of your needs while preserving the intimacy of each passenger.

A 140 m<sup>2</sup> reception area includes:

A reception/concierge desk, An excursions desk, The ship's administrative services, The sales office, manned by our Guest Relations Officer, Our 50 m<sup>2</sup> boutique which sells clothing, jewellery, beauty products, postcards and various accessories, Toilets accessible to passengers with reduced mobility.

A new hydraulic platform with adjustable height provides: Easier boarding than on any other cruise ship, Easier Zodiac embarkation and disembarkation for expeditions, Easier access to the sea for swimming and practising various water sports such as kayaking or paddle-boarding.

A pool deck offering: A pool with a panoramic view, equipped with a counter-current swimming system, A pleasant solarium, An outdoor bar and lounge with armchairs and sofas.

A 200 m<sup>2</sup> main lounge which can accommodate all of our passengers to share convivial moments and to host activities organised during the day or evening.

Wild Earth Travel

*Small Ships, Big Adventures*

**0800 945 3327** (within New Zealand) | +64 (0) 3 365 1355 | **1800 107 715** (within Australia)

info@wildearth-travel.com | wildearth-travel.com



# Wild Earth Travel

*Small Ships, Big Adventures*

**wildearth-travel.com**

**info@wildearth-travel.com**

Lastly, a theatre that seats 188, equipped with: The latest sound and lighting technology, A LED wall as the stage backdrop, for the projection of high-resolution images and videos.



and videos.

Wild Earth Travel

*Small Ships, Big Adventures*

**0800 945 3327** (within New Zealand) | +64 (0) 3 365 1355 | **1800 107 715** (within Australia)

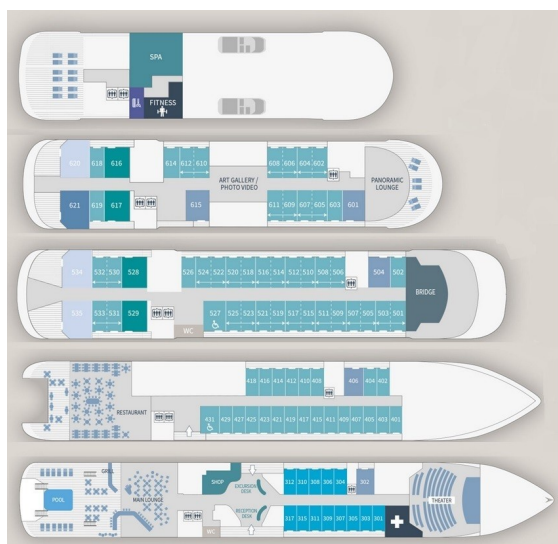
info@wildearth-travel.com | **wildearth-travel.com**



[wildearth-travel.com](http://wildearth-travel.com)

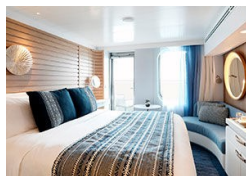
[info@wildearth-travel.com](mailto:info@wildearth-travel.com)

## INSIDE YOUR SHIP

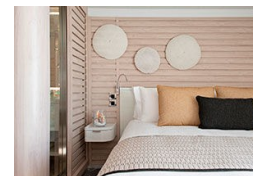


- Owner's Suite Deck 6
- Privilege Suites Deck 5-6
- Grand Deluxe Suites Deck 5-6
- Prestige Suites Deck 5-6
- Deluxe Suites Deck 5-6
- Prestige Cabins Deck 4-5-6
- Deluxe Cabins Deck 3

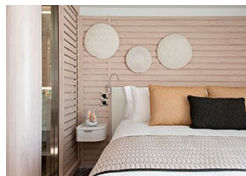
### Deluxe Stateroom



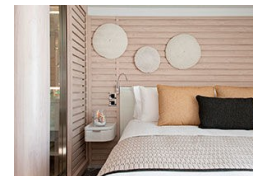
### Deluxe Suite Deck 3



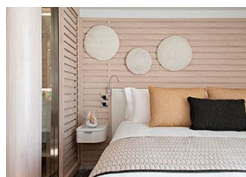
### Deluxe Suite Deck 4



### Deluxe Suite Deck 5



### Deluxe Suite Deck 6



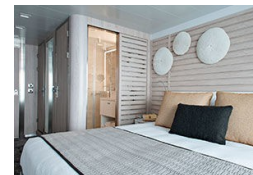
### Grand Deluxe Suite Deck 5



### Grand Deluxe Suite Deck 6



### Prestige Deck 4







# Wild Earth Travel

*Small Ships, Big Adventures*

**wildearth-travel.com**

**info@wildearth-travel.com**

## PRICING

### 20-Apr-2026 to 28-Apr-2026

Deluxe Stateroom	6450 AUD pp
Prestige Deck 4	6790 AUD pp
Prestige Deck 5	6980 AUD pp
Prestige Deck 6	7250 AUD pp
Deluxe Suite Deck 3	9720 AUD pp
Deluxe Suite Deck 6	9720 AUD pp
Deluxe Suite Deck 4	9720 AUD pp
Deluxe Suite Deck 5	9720 AUD pp
Prestige Deck 5 Suite	10460 AUD pp
Prestige Deck 6 Suite	10790 AUD pp
Privilege Suite Deck 5	11060 AUD pp
Privilege Suite Deck 6	11060 AUD pp
Grand Deluxe Suite Deck 6	11400 AUD pp
Grand Deluxe Suite Deck 5	11400 AUD pp

Deluxe Stateroom	6340 AUD pp
Prestige Deck 4	6670 AUD pp
Prestige Deck 5	6870 AUD pp
Prestige Deck 6	7120 AUD pp
Deluxe Suite Deck 3	9550 AUD pp
Deluxe Suite Deck 5	9550 AUD pp
Deluxe Suite Deck 6	9550 AUD pp
Deluxe Suite Deck 4	9550 AUD pp
Prestige Deck 5 Suite	10260 AUD pp
Prestige Deck 6 Suite	10600 AUD pp
Privilege Suite Deck 5	10850 AUD pp
Privilege Suite Deck 6	10850 AUD pp
Grand Deluxe Suite Deck 6	11180 AUD pp
Grand Deluxe Suite Deck 5	11180 AUD pp

### 25-Mar-2027 to 02-Apr-2027



Wild Earth Travel  
*Small Ships, Big Adventures*

**0800 945 3327** (within New Zealand) | +64 (0) 3 365 1355 | **1800 107 715** (within Australia)

info@wildearth-travel.com | wildearth-travel.com



# Wild Earth Travel

*Small Ships, Big Adventures*

**wildearth-travel.com**

**info@wildearth-travel.com**

## SPECIAL OFFERS

Up to 30% OFF! Prices online do not show the discounted rates. Terms and Conditions apply, special offer is subject to availability, please contact us for more details.

Wild Earth Travel

*Small Ships, Big Adventures*

**0800 945 3327** (within New Zealand) | +64 (0) 3 365 1355 | **1800 107 715** (within Australia)

info@wildearth-travel.com | **wildearth-travel.com**