

Wild Earth Travel

Small Ships, Big Adventures

wildearth-travel.com

info@wildearth-travel.com

ATLANTIC CRUISE FROM PORTUGAL TO SENEGAL

Embark on an Atlantic Cruise from Portugal to Senegal, starting in the storied city of Lisbon and ending in the vibrant markets of Dakar. This journey along the Atlantic coast promises an unforgettable blend of landscapes and cultures. Traversing the mesmerizing Sahara bordering Morocco and Mauritania with a stop in the volcanic Canary Islands, travelers will be enthralled from beginning to end. In Funchal, the colorful Old Town and a thrilling cable car ride await. Discover Santa Cruz de la Palma's elegant colonial architecture and Mount Teide's dramatic presence in Tenerife. In Nouadhibou, observe vital ecosystems in Banc d'Arguin National Park and experience the lively port surroundings. Onboard, indulge in enriching activities such as photography workshops, expert lectures, and cozy library visits with breathtaking sea views. Adventurous spirit and luxury intertwine with kitesurfing in Dakhla, shopping in Nouakchott's vibrant markets. Each moment on this Atlantic adventure is carefully curated to inspire and delight.



ITINERARY

Days 0 - 1 Pre Cruise & Lisbon

Spread over seven hills with Sao Jorge Castle views, bustling Lisbon is one of the world's oldest cities. Elegant Baixa, hilltop Alfama with its yellow tram, and scenic Graça overlooking pastel buildings, are top areas. The Jeronimos Monastery in Belem is a World Heritage Gothic site. The classic Portuguese pastel de nata custard tarts are a local treat. Europe's longest suspension bridge, the Ponte 25 de Abril, crosses the river Tagus.

Day 2 Day at sea

Wild Earth Travel

Small Ships, Big Adventures

0800 945 3327 (within New Zealand) | +64 (0) 3 365 1355 | **1800 107 715** (within Australia)

info@wildearth-travel.com | **wildearth-travel.com**



Wild Earth Travel

Small Ships, Big Adventures

wildearth-travel.com

info@wildearth-travel.com

Days 6-7 Dakhla

Sea days are rarely dull. Take the time to sit back and let the world go by. The ship's observation decks provide stunning views of the passing ocean. A day at sea gives you the opportunity to mingle with other passengers and share your experiences of this incredible trip or head to our library which is stocked full of reference books. Get an expert's view in one of our on-board lectures or perhaps perfect your photography skills with invaluable advice from our onboard professional photographers.

The city of Dakhla's position on a peninsula along Morocco's Atlantic coast where the desert meets the sea makes it a unique gateway to Western Sahara's landscapes. The region is a haven for birdwatching enthusiasts, with its vibrant flamingo population attracting numerous visitors. Kitesurfing and desert safaris are also popular activities, offering chances to see mammals like sand cats and reptiles including spiny-tailed lizards.

Day 3 Funchal, Madeira Island

Madeira is famous for lush gardens with subtropical plants, but Funchal, the capital of the Garden Island, has more to offer. Rua de Santa Maria's colourful Old Town street is brightened with 200 painted doors. Madeira wine cellars' tasting rooms are scattered throughout the town. Taking a cable car ride to Monte provides a scenic experience, then from the top, carriages, straw-boated drivers, guide wicker-basket sleds down the steep streets.

Day 8 Nouadhibou

Nouadhibou, Mauritania's bustling port city, is a cultural hub known for its diverse population, vibrant markets and a strong economy based on iron ore and fishing. The Port Artisanal is busy with Mauritanian and Senegalese pirogue fishing boats. Nearby, Cap Blanc features pristine sands and a colony of monk seals, while the UNESCO-listed Banc d'Arguin National Park, renowned for its nesting birds and migratory waders, is also close by.

Day 4 Santa Cruz de la Palma

The historic streets of breathtakingly beautiful Santa Cruz de la Palma, on La Palma, make it one of the prettiest settlements in the Canary Islands. Steeped in history, this island capital is home to palaces, colonial-style houses and the Shrine of Virgen de las Nieves, the oldest religious statue in the Canary Islands. Santa Cruz is as equally picturesque in the day as at night when the city comes alive.

Day 9 Nouakchott

Nouakchott, Mauritania's capital and largest city, is a key Saharan hub. It offers Fishermen's Beach, known for its colourful boats and sunset views. The city hosts the Presidential Palace and the National Museum of Mauritania, which provides insights into regional history. Notable shopping areas include the Grand Market, Artisan's Village and the Silver Market, known for Mauritanian silver jewellery with distinctive designs.

Day 5 Santa Cruz de Tenerife, Tenerife Island

Tenerife beguiled Agatha Christie when she arrived in 1927 in the old town of Santa Cruz, Tenerife's capital. Mount Teide, at 3,700-m-high, is the world's third largest volcano and dominates the landscape. Its volcanic slopes make excellent terroir for quality wines. Admiral Nelson lost his arm in 1797 in San Cristobal de La Laguna, the world's first city laid out in a grid with charming 16th-century pastel mansions adorned with wooden balconies.

Day 10 Dakar

Fabulous museums, a thriving art scene and elegant seaside dining showcase Dakar's rich culture and forward outlook. The bustling traditional Medina quarter with its mosques, tea shops and street markets contrasts with the Senegalese capital's French-influenced architecture and cuisine. Mbalax music dominates the vibrant nightlife. Traditional crafts like woodcarvings and

Wild Earth Travel

Small Ships, Big Adventures

0800 945 3327 (within New Zealand) | +64 (0) 3 365 1355 | **1800 107 715** (within Australia)

info@wildearth-travel.com | **wildearth-travel.com**



Wild Earth Travel

Small Ships, Big Adventures

wildearth-travel.com

info@wildearth-travel.com

paintings sell at Soumbédioune market, making it the perfect souvenir stop.

Please note:

Itineraries are subject to change.



0800 945 3327 (within New Zealand) | +64 (0) 3 365 1355 | **1800 107 715** (within Australia)

info@wildearth-travel.com | **wildearth-travel.com**



Wild Earth Travel

Small Ships, Big Adventures

wildearth-travel.com

info@wildearth-travel.com

YOUR SHIP: DIANA

YOUR SHIP:	Diana
VESSEL TYPE:	Expedition Ship
LENGTH:	125 meters
PASSENGER CAPACITY:	192
BUILT/REFURBISHED:	2022-2023

Arriving in early 2023, SH Diana will be the largest ship in our fleet, providing elegant and spacious 5-star accommodation for 192 guests in 96 spacious staterooms and suites, the vast majority with large balconies. Operated by an onboard team of 140 she will provide the highest levels of personal service and take Swan Hellenic back to its roots when she launches, exploring the Mediterranean and its famous sites of antiquity. Now sit back, relax and take a moment to get to know this amazing new ship, purpose-designed for our unique cultural expedition cruises.

Named after the Ancient Roman goddess of light, the moon, hunting and the wilderness, SH Diana been specially designed for worldwide cruising to explore the most inspiring and inaccessible places on earth. Building on the outstanding amenities of her sister ships, she adds a dedicated Multifunctional Room next to the Observation Lounge, a Private Dining Room for special occasions, and two tenders which bring guests a comfortable alternative to Zodiacs for expedition landings. A Polar Class 6 ice-strengthened hull combines with extra-large stabilisers to make your journey as comfortable as possible.

SH Diana has been designed for immersive experiences, with extensive outside deck areas, multiple observation points and bright, open and relaxing public spaces with unobstructed views. The pleasure and safety of our guests is paramount at all times, cared for by our attentive crew and seasoned expedition leaders. Cutting edge hygiene technology protects the health of all on board to the highest standards and includes air conditioning with UV sanitisation systems.

SH Diana's 96 staterooms , including 11 suites, are each a superbly comfortable home from home and all feature panoramic sea views, a flame-effect fireplace, original works of art, plush couches, premium pocket sprung mattresses, en-suite bathrooms with glass-enclosed rain showers, and Egyptian cotton towels, bathrobes and sheets. A pillow menu offers customised head and neck comfort during rest, while a large flat screen TV, espresso machine with Illy premium coffee, tea making facilities with the finest Kusmi teas, and a minibar with refreshments enhance relaxation at any time. In-room dining is of course available at all hours.



all hours.

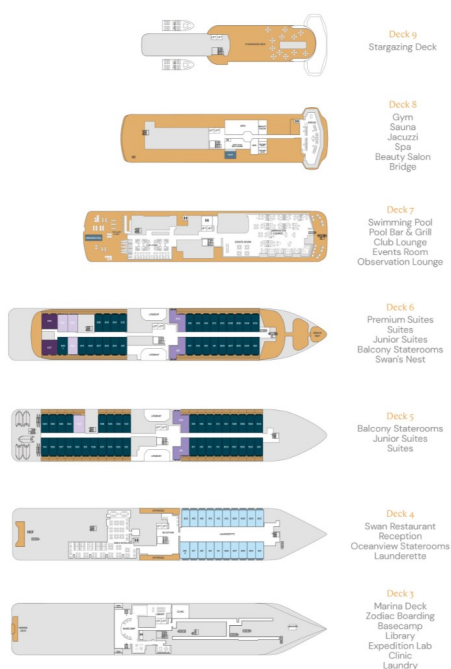
Wild Earth Travel

Small Ships, Big Adventures

0800 945 3327 (within New Zealand) | +64 (0) 3 365 1355 | **1800 107 715** (within Australia)

info@wildearth-travel.com | **wildearth-travel.com**

INSIDE YOUR SHIP



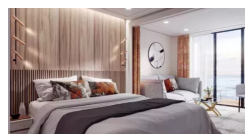
Balcony D5



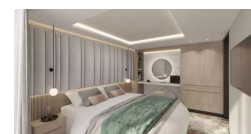
Balcony D6



Balcony M5



Junior Suite



Oceanview D4



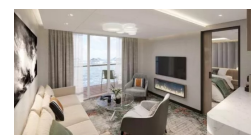
Oceanview M4



Premium Suite



Suite





Wild Earth Travel

Small Ships, Big Adventures

wildearth-travel.com

info@wildearth-travel.com

PRICING

06-Sep-2026 to 16-Sep-2026

Oceanview D4	11480 AUD pp
Oceanview M4	11980 AUD pp
Balcony D5	13780 AUD pp
Balcony M5	14380 AUD pp
Balcony D6	14880 AUD pp
Junior Suite	17180 AUD pp
Suite	19980 AUD pp
Premium Suite	22980 AUD pp



Wild Earth Travel
Small Ships, Big Adventures

0800 945 3327 (within New Zealand) | +64 (0) 3 365 1355 | **1800 107 715** (within Australia)

info@wildearth-travel.com | **wildearth-travel.com**