



## ARCTIC SPRING: A JOURNEY THROUGH ICE AND INUIT CULTURE

Set off on an unforgettable adventure along the northwest coast of Greenland, in the heart of Baffin Bay to the majestic Disko Bay, a place of truly rare beauty, only accessible to \_Le Commandant Charcot\_ during this season. Explore an icy and preserved world, where nature reigns supreme and shelters seals, whales and seabirds... Disko Bay will unveil its gigantic icebergs \- the largest in the northern hemisphere - while Disko Island reveals an almost surreal landscape: ice stretching as far as the eye can see, frozen fjords and crystal-clear polar light. In this silent kingdom, you will set off to encounter Inuit communities and share rare moments imbued with humanity and warmth. A unique and timeless experience involving both exploration and cultural immersion.



### ITINERARY

#### Day 1 - Nuuk

When Erik Le Rouge, the exiled Norse chief, landed on the coast of Nuuk, he found a fertile and welcoming land dotted with fjords. He settled there with a group of his former countrymen, and the Norse remained the principal inhabitants until, over a period of 500 years, their population declined and gave way to the Inuit. Nuuk is situated at the mouth of one of the largest networks of fjords in the world, where the waters never freeze. The town spreads gently out towards the Davis Strait and enjoys an historic center that is particularly rich in national heritage. The vivid reds, blues, greens and yellows of the houses are a lively contrast to the somber waters of Greenland and serve to lift the spirits of the locals during the Winter months.

#### Day 2 - At sea aboard Le Commandant Charcot



# Wild Earth Travel

*Small Ships, Big Adventures*

**wildearth-travel.com**

**info@wildearth-travel.com**

Spend exceptional moments sailing aboard Le Commandant Charcot, the world's first luxury polar exploration vessel and the first PC2-class polar cruise ship capable of sailing into the very heart of the ice, on seas and oceans which the frozen conditions render inaccessible to ordinary ships. Le Commandant Charcot is fitted with oceanographic and scientific equipment selected by a committee of experts. Take advantage of the on-board lectures and opportunities for discussion with these specialists to learn more about the poles. Participate in furthering scientific research with PONANT and let us discover together what these fascinating destinations have yet to reveal to us.

## Days 3 - 4 Disko Bay

To the east of Baffin Bay, discover Disko Bay, scattered with countless icebergs produced by the Ilulissat Icefjord, a UNESCO World Heritage Site. From your ship, admire the majestic ballet of these ice giants as they slowly drift across the dark waters. This site is a natural marvel of Greenland, and is also renowned as an observation point for the region's many humpback whales. The encounters with wild fauna and stunning landscapes in the heart of this spectacular and fragile nature will be pure moments of wonder for you.

## Day 5 - Disko Island

Disko Island, called Qeqertarsuaq in Greenlandic, is one of the most spectacular jewels of the west coast of Greenland. It is crossed by an ice cap, which gives rise to small coastal glaciers and to immaculately white inland landscapes. At the end of the winter, the island unveils a magical face, between stretching ice, crystal-clear polar light and frozen fjords, offering the perfect setting for polar exploration. At this period, the south of the island is also home to bowhead whales, one of the rarest species in the world, which spend the winter in these polar waters.

## Day 6 - Baffin Bay exploration

In the icy waters of Baffin Bay, you will sail into the heart of the scattered sea floe. You will be captivated by icebergs in dreamlike shapes as your ship takes you into the ice of the Far North. Everything comes in shades of white here and, if you watch closely, you may get a glimpse of the lord of this kingdom, the polar bear. This fascinating animal finds its food in the heart of the ice, so

this is where you have more chances of spotting it. The polar light gives a shine to the ice floe that you sail along as you explore Baffin Bay, leaving you with memories of unforgettable moments.

## Days 7 - 8 Sisimiut

During your cruise, we invite you to discover Sisimiut, founded in 1756 and the second largest town in Greenland. This small town is typical of Greenland, boasting bewitching panoramas: here and there, colourful stilt houses dot the undulating landscape, and the small fishing port stands as the gateway to an icy realm. As for the town centre, it is home to a number of historic buildings, a small church and a museum which retraces the history of the Inuit people, as well as many craft shops. When your ship drops anchor here, you will set out to meet the locals in a typically arctic atmosphere.

## Day 9 - Nuuk

When Erik Le Rouge, the exiled Norse chief, landed on the coast of Nuuk, he found a fertile and welcoming land dotted with fjords. He settled there with a group of his former countrymen, and the Norse remained the principal inhabitants until, over a period of 500 years, their population declined and gave way to the Inuit. Nuuk is situated at the mouth of one of the largest networks of fjords in the world, where the waters never freeze. The town spreads gently out towards the Davis Strait and enjoys an historic center that is particularly rich in national heritage. The vivid reds, blues, greens and yellows of the houses are a lively contrast to the somber waters of Greenland and serve to lift the spirits of the locals during the Winter months.

## Please note:

Itinerary is subject to change according to port authorizations and government regulations. We are privileged guests in these remote lands where we are at the mercy of weather, ice, tidal and current conditions. Landings on certain sites and the observation of certain wildlife cannot be guaranteed. They vary from day to day, making each PONANT cruise a unique experience. The Captain and the Expedition Leader will make every effort to ensure that your experience is as rich as possible, while complying with the safety rules and instructions imposed by the AECO.

Wild Earth Travel  
*Small Ships, Big Adventures*

**0800 945 3327** (within New Zealand) | +64 (0) 3 365 1355 | **1800 107 715** (within Australia)

info@wildearth-travel.com | wildearth-travel.com





# Wild Earth Travel

*Small Ships, Big Adventures*



**wildearth-travel.com**

**info@wildearth-travel.com**

## YOUR SHIP: LE COMMANDANT-CHARCOT

<b>YOUR SHIP:</b>	<b>Le Commandant-Charcot</b>
<b>VESSEL TYPE:</b>	<b>Polar Luxury Expedition</b>
<b>LENGTH:</b>	<b>149.9 meters</b>
<b>PASSENGER CAPACITY:</b>	<b>135 cabins</b>
<b>BUILT/REFURBISHED:</b>	<b>2018/2019</b>

Be the first aboard Le Commandant-Charcot, the world's luxury polar exploration vessel, and enjoy a unique sailing experience in the Arctic or Antarctic!

With its hybrid propulsion combining liquefied natural gas (LNG) and electric generators, Le Commandant-Charcot has been designed to minimise the environmental impact of travel to the furthest latitudes.

The decoration of the ship, imagined by two internationally renowned design and architecture firms - the studio of Jean-Philippe Nuel and Wilmotte & Associates - is designed to be in harmony with the environment. The approach is contemporary with the desire to create a warm and elegant setting; stone, wood and leather recall the natural environment in which the ship is sailing.

Equipped with just 135 staterooms including 31 suites with balconies and outside views, Le Commandant-Charcot welcomes you in an intimate and refined atmosphere. Outstanding gastronomy in the two restaurants, relaxation in the indoor pool surrounded by its winter garden, relaxation in the well-being area with sauna and Snow Room... Like on a private yacht, each of our guests is unique.

### PUBLIC AREAS

Le Commandant-Charcot has many common areas that are designed and equipped to meet all of your needs while preserving the intimacy of each passenger.

A 177 m<sup>2</sup> reception area includes: A reception/concierge desk, An expeditions desk, The ship's administrative services, The sales office, manned by our Hospitality & Travel Manager officer, Our boutique which sells clothing, jewellery, beauty products, postcards and various accessories, The image & photo desk.

The different lounges: A 302 m<sup>2</sup> main lounge including a 28 m<sup>2</sup> cigar lounge, a tea corner and a bar, with live music on selected evenings, A 400 m<sup>2</sup> panoramic bar and lounge, An open-air Bar.

The recreation spaces

Fitness & Beauty Corner: Fitness room: Elliptic, running machines, bicycles...

Beauty Corner: Hairdresser, Massage rooms, Sauna, Snow Room, Nail Shop.

Pool area: Indoor Pool and winter garden - Outdoor Pool

Theatre: Capacity: 270-276 - Main show room for conferences and live entertainment on selected evenings - State-of-the-art audio and video technology.

Leisure area: Public areas - Library - Medical centre.

16 Zodiac®.



Wild Earth Travel  
*Small Ships, Big Adventures*

**0800 945 3327** (within New Zealand) | +64 (0) 3 365 1355 | **1800 107 715** (within Australia)

info@wildearth-travel.com | **wildearth-travel.com**



16 Zodiac®.



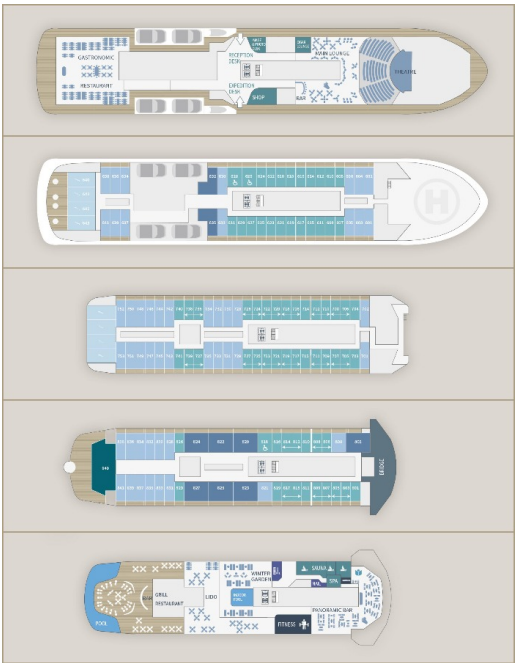


**Wild Earth Travel**  
*Small Ships, Big Adventures*

**wildearth-travel.com**

**info@wildearth-travel.com**

**INSIDE YOUR SHIP**



**Deluxe Suite Deck 6**



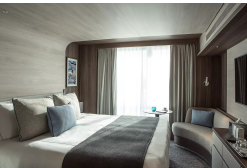
**Deluxe Suite Deck 8**



**Grand Prestige Suite**



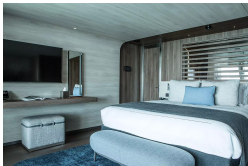
**Prestige Stateroom Deck 7**



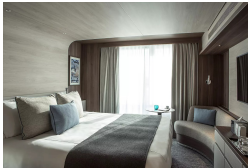
**Deluxe Suite Deck 7**



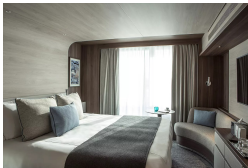
**Duplex Suite**



**Prestige Stateroom Deck 6**



**Prestige Stateroom Deck 8**



**Wild Earth Travel**  
*Small Ships, Big Adventures*

**0800 945 3327** (within New Zealand) | +64 (0) 3 365 1355 | **1800 107 715** (within Australia)

info@wildearth-travel.com | wildearth-travel.com



# Wild Earth Travel

*Small Ships, Big Adventures*



**wildearth-travel.com**

**info@wildearth-travel.com**

## PRICING

**27-Mar-2027 to 04-Apr-2027**

<b>Prestige Stateroom Deck 6</b>	<b>25610 AUD pp</b>
<b>Prestige Stateroom Deck 7</b>	<b>26030 AUD pp</b>
<b>Prestige Stateroom Deck 8</b>	<b>26450 AUD pp</b>
<b>Deluxe Suite Deck 6</b>	<b>27090 AUD pp</b>
<b>Deluxe Suite Deck 7</b>	<b>28160 AUD pp</b>
<b>Deluxe Suite Deck 8</b>	<b>29000 AUD pp</b>
<b>Prestige Suite Deck 7</b>	<b>36200 AUD pp</b>
<b>Prestige Suite Deck 8</b>	<b>37270 AUD pp</b>
<b>Grand Prestige Suite</b>	<b>38330 AUD pp</b>
<b>Privilege Suite Deck 8</b>	<b>40450 AUD pp</b>
<b>Duplex Suite</b>	<b>54240 AUD pp</b>



Wild Earth Travel  
*Small Ships, Big Adventures*

**0800 945 3327** (within New Zealand) | +64 (0) 3 365 1355 | **1800 107 715** (within Australia)

info@wildearth-travel.com | **wildearth-travel.com**



**Wild Earth Travel**  
*Small Ships, Big Adventures*

**wildearth-travel.com**

**info@wildearth-travel.com**

## SPECIAL OFFER

Online prices reflect the current brochure fare savings of up to 30%. Prices may change based on demand. Terms and conditions apply. This special offer is subject to availability. Please contact us for more details.

**Wild Earth Travel**  
*Small Ships, Big Adventures*

**0800 945 3327** (within New Zealand) | +64 (0) 3 365 1355 | **1800 107 715** (within Australia)

info@wildearth-travel.com | **wildearth-travel.com**