



ARCTIC ODYSSEY UNDER A SOLAR ECLIPSE - SVALBARD, GREENLAND & ICELAND EXPEDITION CRUISE

Can you top the magic of an Arctic expedition cruise? Yes, when luck is on your side, and you travel during a total solar eclipse. We are thrilled to announce a special cruise tailored to witness this unique celestial event in August 2026. That's when our Arctic Odyssey cruise will transform into a once-in-a-lifetime event for travelers who manage to secure a spot.

On August 12th, 2026 a total eclipse will pass over Greenland, Iceland and parts of the Atlantic Ocean, and we'll be right there, anchored aboard the Sea Spirit (occupying the best spot to see it)!

Depart Longyearbyen and start your cruise by exploring the best of Svalbard. Head on across the Greenland Sea to explore East Greenland. Prepare for an unforgettable total solar eclipse in one of the most amazing places on Earth! Return via Iceland and disembark in Reykjavik with memories to last for a lifetime.

We've secured a very special guest for this event: astrophysicist Paul Sutter, who'll enhance our experience with his expert knowledge about this celestial event.

Paul M. Sutter is a Research Professor of Theoretical Cosmology at Stony Brook University's Institute for Advanced Computational Science and a visiting professor at Barnard College, Columbia University. He received his PhD in Physics as a Department of Energy Computational Science Graduate Fellow at the University of Illinois at Urbana-Champaign before completing post-doctoral fellowships at the Institut d'Astrophysique de Paris and at the



Osservatorio Astronomico di Trieste. Paul also serves on the external advisory council for NASA's Innovative Advanced Concepts program and as a consultant for the Department of Energy.

An award-winning science communicator, Paul has authored three popular science books and has hosted television shows on Discovery, Science Channel, History Channel, and many digital channels. In addition to writing for Scientific American, Nautilus, Ars Technica, and more, Paul has developed one of the most popular podcasts in the world and is a globally recognized leader in the intersection of art and science, especially in his role as a United States Cultural Ambassador. Paul will enhance your eclipse experience with expert insights, making the moment of totality on August 12, 2026, even more unforgettable



forgettable

ITINERARY

Day 1 (Aug 2): Arrival in Longyearbyen, Svalbard (hotel night)

Welcome to Longyearbyen, the administrative center of Svalbard and starting point of our Arctic expedition! At the Longyearbyen airport, you will be greeted by our staff and transferred to a quality hotel, which has been arranged by us and is included in the price of the itinerary. You will then be free to explore the charming, walkable town center.

We recommend starting your discovery of this fascinating Norwegian High Arctic territory at the excellent Svalbard Museum, where you can also purchase hard-to-find polar books and maps. Afterward, you can enjoy an excellent dinner at one of Longyearbyen's many delightful restaurants. If you are still awake at midnight, you will notice the sun has not set. In fact, the sun will not set for the entire duration of our time in Svalbard.

Day 2 (Aug 3): Welcome Aboard!

After breakfast at your hotel, the morning is yours to enjoy Longyearbyen. Take in the views of icy fjords and glaciated mountains surrounding this historic former coal-mining town. Take advantage of shopping for souvenirs or some last-minute necessities such as cold-weather gear. Just remember, you will soon receive your very own parka to keep and waterproof boots to borrow on board the ship. For lunch, Longyearbyen offers quick and easy meal options including the most northerly pizzas and kebabs in the world.

In the afternoon, you will be transferred to the pier where we will warmly welcome you aboard the deluxe expedition vessel M/V Sea Spirit. Get settled in your spacious suite and explore the ship that will be your comfortable home during the extraordinary adventure to come. After getting underway, a full schedule of events kicks off with informative briefings and introductions from your expedition staff. After the first of many delicious dinners on board, step out onto the open decks to admire the gorgeous scenery in 24-hour daylight as we pass through the wildlife-rich waters of Isfjorden.

Day 3-5 (Aug 4 - 6): Exploration of Svalbard



Wild Earth Travel

Small Ships, Big Adventures

wildearth-travel.com

info@wildearth-travel.com

Svalbard is a true High Arctic wilderness and this part of the voyage is a real expedition. Our route and exploration opportunities here are heavily dependent on the weather and sea ice conditions we encounter. Our experienced captain and expedition leader decide the itinerary and continually adjust plans as conditions and opportunities warrant. You can be sure that the best possible advantage will be taken of the circumstances presented to us by Nature in this wild and remote corner of the Arctic.

We anticipate exploring in the northwestern part of the island of Spitsbergen. This area contains the archipelago's most impressive scenery and some of the Arctic's best wildlife viewing opportunities. Deep fjords and narrow channels are flanked by jagged snowy mountain peaks. Immense tidewater glaciers calve icebergs into turquoise waters. Fields of flowering tundra are home to grazing reindeer and playful Arctic fox. Bountiful inshore and offshore waters are home to a wide variety of marine mammals. Polar Bears can be spotted anytime, anywhere in and around Svalbard.

Also in this area is Ny Ålesund, a former mining town that is now home to an international community of Arctic researchers, complete with museum, gift shop, and post office. This was also a staging area for historic attempts to discover the North Pole.

Day 6-7 (Aug 7 - 8): Across the Greenland Sea

From Svalbard we head southwest across the Greenland Sea toward East Greenland. In these far northern latitudes it is possible to encounter sea ice any time of the year. All along the way we remain vigilant for sightings of marine mammals such as whales and seals.

Day 8-10 (Aug 9 - 11): Exploration of East Greenland

This expedition cruising is at its most authentic. Our itinerary and exploration opportunities in East Greenland depend on weather and sea ice conditions. Rest assured, our experienced captain and expedition leader will seize every chance for exceptional wildlife viewing, discovering incredible scenery, and

going ashore wherever possible. We will navigate through the world's largest national park, home to the Franz Josef Fjord and Kong Oscar Fjord systems, and explore Scoresby Sund, the planet's most extensive fjord system.

These ice-bound regions showcase the Arctic's most breathtaking landscapes, emphasizing the natural splendor and the significant influence of climate and geography. Beyond the scenic vistas, our expedition explores the Arctic's rich cultural heritage, from ancient Thule sites to the contemporary Inuit village of Ittoqqortoormiit.

Day 11 (Aug 12): Solar Eclipse

This trip isn't just about seeing beautiful places; it's also about experiencing a rare celestial event—a total solar eclipse. It will happen on August 12, 2026 and will pass over the Arctic, Greenland, Iceland, the Atlantic Ocean, and northern Spain. Our ship, the Sea Spirit, will anchor in the best location in the waters of Greenland to ensure you enjoy this moment to the fullest. The journey is further enriched by astrophysicist Paul Sutter. Known for his ability to make complex scientific concepts accessible and engaging, Paul will enhance your eclipse experience with expert insights, making the moment of totality on August 12, 2026, even more unforgettable.

Day 12 (Aug 13) : Across Denmark Strait

After our amazing time in East Greenland we cross Denmark Strait toward Iceland, crossing the Arctic Circle on the way. Presentations and workshops by our expert staff, as well as our range of onboard recreation facilities, ensure that this day at sea is not idly spent. Seabird viewing and whale sightings can be enjoyed from panoramic open decks as well as exterior stateroom windows and balconies.

Day 13 (Aug 14): Westfjords, Iceland

Our last expedition day is spent in the beautiful Vestfirðir (Westfjords) of

Wild Earth Travel
Small Ships, Big Adventures

0800 945 3327 (within New Zealand) | +64 (0) 3 365 1355 | **1800 107 715** (within Australia)

info@wildearth-travel.com | wildearth-travel.com



Iceland. This remote and sparsely populated region of crenulated coastlines, voluminous waterfalls and rugged mountains sees only 10% of Iceland's visitors. Deep fjords are home to whales while estuaries abound with seals and birdlife.

Day 14 (Aug 15): Disembarkation in Reykjavík, Iceland

After breakfast we say farewell in Reykjavik, the capital of Iceland and ending point of our expedition. We provide a transfer to the airport or to the city center if you wish to spend another day or more in Iceland before flying home.

Reykjavik is home to a wealth of cultural institutions such as museums, galleries, and the Hallgrímskirkja church. Leisure possibilities inside the city include parks, gardens, and thermal baths. You can also take advantage of Reykjavik's wide range of shopping possibilities, excellent dining options, and famous nightlife. And of course the entire country of Iceland is accessible through day tours or longer journeys by rental car. The options for additional adventures are endless!

Please note:

Itinerary, landings and all other activities during the cruise depend strongly on ice and weather conditions and are subject to the decisions of the Expedition Leader and the Captain of the vessel. Encounters with any mentioned wildlife cannot be guaranteed.

Wild Earth Travel

Small Ships, Big Adventures

wildearth-travel.com

info@wildearth-travel.com

YOUR SHIP: SEA SPIRIT

YOUR SHIP:	Sea Spirit
VESSEL TYPE:	Small Ship Expedition
LENGTH:	90 metres
PASSENGER CAPACITY:	114
BUILT/REFURBISHED:	1992 / 2017

Like some of the birds we see in the Arctic and Antarctica, our m/v Sea Spirit is migratory and follows the sun, northbound in the summer and southbound in the winter, always ready for spontaneous discoveries - a pod of whales, a family of polar bears or a glaciated mountain vista. She is highly maneuverable and capable of navigating the narrow fjords of East Greenland and entering the small bays of Spitsbergen.

Onboard, we create a friendly and welcoming atmosphere for all our guests. They are united by one goal - to have a memorable wilderness experience and to become real polar adventurers. We believe that first-hand travel to such places makes one an ambassador for conservation, and helps strengthen our resolve to protect these natural environments for future generations.

Public areas include: Reception, Restaurant, Bar, Outdoor Bistro, Club Lounge, Library, Presentation Lounge, Infirmary, Gym, Bridge.

We have open Bridge policy. Talk to the Captain and officers. Watch landscapes from this special angle of view. Fix your location at a map of your expedition.



Wild Earth Travel

Small Ships, Big Adventures

0800 945 3327 (within New Zealand) | +64 (0) 3 365 1355 | **1800 107 715** (within Australia)

info@wildearth-travel.com | wildearth-travel.com



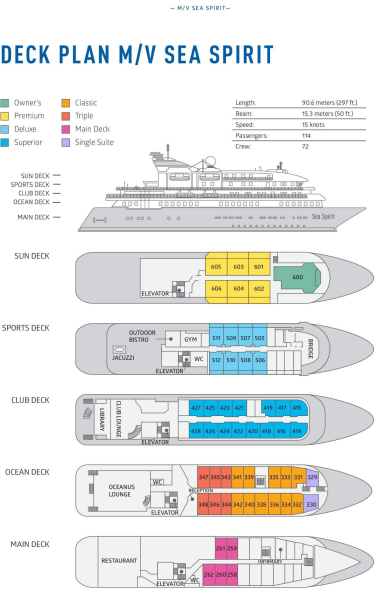
Wild Earth Travel

Small Ships, Big Adventures

wildearth-travel.com

info@wildearth-travel.com

INSIDE YOUR SHIP



Classic Suite



Deluxe Suite



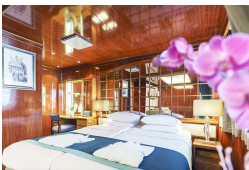
Main Deck Suite



Owner's Suite



Premium Suite



Single Suite



Superior Suite



Triple Classic





Wild Earth Travel
Small Ships, Big Adventures

wildearth-travel.com

info@wildearth-travel.com

PRICING

02-Aug-2026 to 15-Aug-2026

Triple Classic	21195 AUD pp
Main Deck Suite	29295 AUD pp
Classic Suite	31095 AUD pp
Superior Suite	31595 AUD pp
Deluxe Suite	35695 AUD pp
Premium Suite	38995 AUD pp
Single Suite	43595 AUD pp
Owner's Suite	50095 AUD pp

Wild Earth Travel
Small Ships, Big Adventures

0800 945 3327 (within New Zealand) | +64 (0) 3 365 1355 | **1800 107 715** (within Australia)

info@wildearth-travel.com | **wildearth-travel.com**