

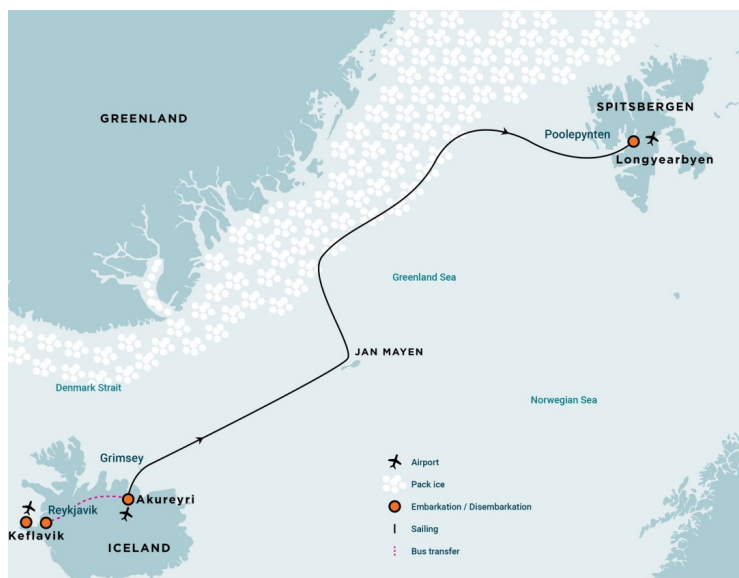


wildearth-travel.com

info@wildearth-travel.com

ARCTIC OCEAN - JAN MAYEN, ICE EDGE, SPITSBERGEN, BIRDING - EXPEDITION CRUISE

Voyage from the volcanic shores of Iceland to the icy fjords and snow-capped peaks of Spitsbergen, crossing the Arctic Circle, visiting remote Jan Mayen with its rich seabird life, and following the edge of the ice as you go. Watch for whales, seals, and polar bears on the journey north.



ITINERARY

Day 1: The start of an adventure

In the late afternoon, you board m/v Hondius in the port city of Akureyri, a historical fishing port known as the Capital of North Iceland. We sail north through Eyafjordur, one of the longest fjords in Iceland, where we may see our first whales as we reach the open sea.

Day 2 - 8: At the Arctic Circle

At the Arctic Circle

We land on the small island of Grimsey, which straddles the Arctic Circle. Grimsey has a friendly fishing village and is home to vibrant colonies of kittiwakes, razorbills, puffins, fulmars, and Arctic terns. In the evening, we pass



Kolbeinsey, a tiny uninhabited island, on our way north. From this point onwards, we will experience daylight around the clock.

Sailing northward

Sailing toward the isolated Jan Mayen, we will look for humpbacks, fin, minke, blue whales, and even orcas. During the crossing, the ship will alter course to provide better viewing opportunities when wildlife is spotted.

Volcanic rock and ocean air

We found ourselves before Jan Mayen, a stark volcanic island crowned by the snow-capped summit of Mt. Beerenberg. From the slopes of this imposing 2,300-meter-high (7,545 feet) volcano, broken glaciers tumble out into the frigid sea. With permission from the Norwegian authorities, you can now visit the weather station. You can also walk to the remains of a 17th-century Dutch whaling station amid the thick moss beds of this stark volcanic landscape. This historic place is tied deeply to the Dutch whaling industry of the past and is intensely atmospheric.

Beneath the midnight sun & along the ice edge

Basking in the midnight sun, you sail north along the edge of the sea ice in search of bowhead whales, harp seals, polar bears, and a variety of seabirds. You then change direction after about 79° north, cutting west to the rocky edges of the continental shelf of West Spitsbergen. Here, you have a good chance of seeing fin whales and - near the glacial mouths of the gaping Spitsbergen fjords - surfacing minke whales.

The Arctic island of Spitsbergen

Forlandsundet, between the main island of Spitsbergen and the narrow Prins Karls Forland, is a place of great beauty and fascinating wildlife. Walrus sometimes haul out here. Alternatively, you might sail into St. Johns Fjord or head south to the mouth of Isfjorden, landing at Alkhomet. These cliffsides are crucial for nesting birds. Many species build their nests here, while Arctic foxes search below for fallen eggs and chicks. On the surrounding slopes, reindeer graze sparse vegetation, creating superb photographic opportunities.

Day 9: Journey's end in Longyearbyen

With Arctic memories that will last a lifetime and cameras full of fantastic images, you disembark in Longyearbyen, the administrative center of

Spitsbergen, once more. While your journey is at an end, the pioneering spirit of Arctic adventure will stay with you, whatever comes next!

Please note:

All itineraries are for guidance only. Programs may vary depending on ice, weather, and wildlife conditions. Landings are subject to site availabilities, permissions, and environmental concerns per AECO regulations. Official sailing plans and landing slots are scheduled with AECO prior to the start of the season, but the expedition leader determines the final plan. Flexibility is paramount for expedition cruises. The average cruising speed of our vessel is 10.5 knots.



Wild Earth Travel

Small Ships, Big Adventures

wildearth-travel.com

info@wildearth-travel.com

YOUR SHIP: HONDIOUS

YOUR SHIP:	Hondius
VESSEL TYPE:	Polar Class Expedition Ship
LENGTH:	107.6 metres
PASSENGER CAPACITY:	170
BUILT/REFURBISHED:	2019

Hondius is the first-registered Polar Class 6 vessel in the world, meeting the latest and highest Lloyd's Register standards for ice-strengthened cruise ships. Surpassing the requirements of the Polar Code adopted by the International Maritime Organization (IMO), Hondius represents the most flexible, advanced, innovative touring vessel in the polar regions, thoroughly optimized for exploratory voyages that provide you the utmost first-hand contact with the Arctic and Antarctica.

Happier polar passengers, healthier polar environment

Not only will the numerous amenities and on-board entertainments help make your Hondius voyage truly memorable, this ship also gives you the peace of mind that comes with choosing one of the most environmentally friendly vessel on the polar seas. Hondius uses LED lighting, steam heating, bio-degradable paints and lubricants, and state-of-the-art power management systems that keep fuel consumption and CO2 levels minimal. This means that when you sail aboard Hondius, you get to enjoy the exotic landscapes and wildlife as much as possible while impacting them as little as possible.

Hotel comfort, expedition class

Please be aware that a small number of cabins may have a partially obstructed view due to the size of the windows and the design requirements of the ship. For example, some windows may be partly obstructed in the lower half by a gangway. The best view is always on the outer deck or the bridge. Hondius offers high-quality accommodation for 170 passengers in six grand suites with balconies (27 square meters, 291 square feet), eight junior suites (19 to 20 square meters, 205 to 215 square feet), eight superior cabins (20 to 21 square meters, 215 to 226 square feet), 11 twin deluxe cabins, (19 to 21 square meters, 205 to 226 square feet), 14 twin window cabins (12 to 14 square meters, 129 to 151 square feet) as well as 27 twin porthole cabins, two triple porthole cabins, and four quadruple porthole cabins that vary in size from 12 to 18 square meters, or 129 to 194 square feet. One deck consists of a large observation lounge and separate lecture room, which are reserved for a wide variety of interactive workshops, exhibitions, and performances particular to Hondius. Though elegantly designed in stylish mid-century modern decor, this vessel holds true to Oceanwide's distinctive cozy and informal atmosphere.

Swift & safe ship-to-shore operations

It is our philosophy to keep sea time short so that we can focus instead on fast, effective access to shore and near-shore activities. To give you the maximum contact with the nature and wildlife you traveled so far to see, we employ a tough fleet of rigid-hull inflatable Zodiac boats that guarantee swift and safe landing operations for the passengers. Hondius has two separate gangways and a sheltered indoor Zodiac boarding area

Wild Earth Travel
Small Ships, Big Adventures

0800 945 3327 (within New Zealand) | +64 (0) 3 365 1355 | **1800 107 715** (within Australia)

info@wildearth-travel.com | **wildearth-travel.com**



wildearth-travel.com

info@wildearth-travel.com

that can also be used for special outdoor activities, such as kayaking.

The fast, flexible, friendly heart of the polar regions

Our top priority is taking advantage of every wildlife and terrain opportunity as it occurs. To keep our itineraries flexible itineraries and our response time rapid, Hondius is equipped with advanced stabilizers and two main engines capable of powering the vessel up to 15 knots. But Hondius sacrifices no warmth to achieve its keen polar edge: You will have 70 crew and staff members (including expedition and hotel staff) at your service while on board, ensuring that what little time you do spend on the ship you will spend comfortably entertained.

Age and nationality

Passengers on a typical voyage range from in their 30s to their 80s, with the majority usually between 45 65. Our expeditions attract independent travelers from around the globe who are characterized by a strong interest in exploring remote regions. The camaraderie that develops on board is an important part of the Oceanwide experience, and many passenger groups include several nationalities.

What to wear

In keeping with the spirit of expedition, dress on board is informal. Bring casual and comfortable clothing for all activities, and keep in mind that much of the scenery can be appreciated from deck which can be slippery. Bring sturdy shoes with no-slip soles, and make sure your parka is never far away in case one of our crew shouts "Whales!" over the loudspeaker and you have to dash outside in a moment's notice. Opt for layers, as it is comfortably warm aboard the ship though often cold on deck.

How to pay

Refreshments and souvenirs will be charged to your cabin. The

day before departure you can settle your bill with the hotel manager, paying by credit card (Visa or MasterCard) or cash (euro, or in some cases dollar). We cannot, however, accept checks. Though the prices and standard currency on board is in the euro, other currencies may be accepted at the discretion of the hotel manager, at prevailing rates.

Electric current

The electrical supply aboard ship is 220v, 60Hz. Electrical outlets are standard European with two thick round pins, so some passengers may need a 220v/110v converter.

Gratuities

The customary gratuity to the ship's service personnel is made as a blanket contribution at the end of the voyage and is divided among the crew. Tipping is a personal matter, and the amount you wish to give is at your sole discretion. As a generally accepted guideline, we suggest 8 10 euros per passenger per day. It is better for the crew if you give cash.

Non-smoking policy

We have a non-smoking policy inside all our vessels, though you can smoke in certain designated areas. We ask that you please respect the wishes of non-smokers.

Your physical condition

You must be in good overall health and be able to walk several hours per day. The expedition is ship-based and physically not very demanding, but we spend as much time as possible on shore. You are, however, welcome to remain aboard the ship if you prefer. To join most excursions you must be able to get up and down the steep gangway from the ship to the water level to board the Zodiacs. Staff will assist you in and out of the boats, and boarding will become progressively easier with practice, but conditions on shore can be slippery and rocky. Remember, you will be traveling in remote areas without access



Wild Earth Travel

Small Ships, Big Adventures



wildearth-travel.cominfo@wildearth-travel.com

to sophisticated medical facilities, so you must not join this expedition if you have a life-threatening condition or need daily medical treatment.



treatment.

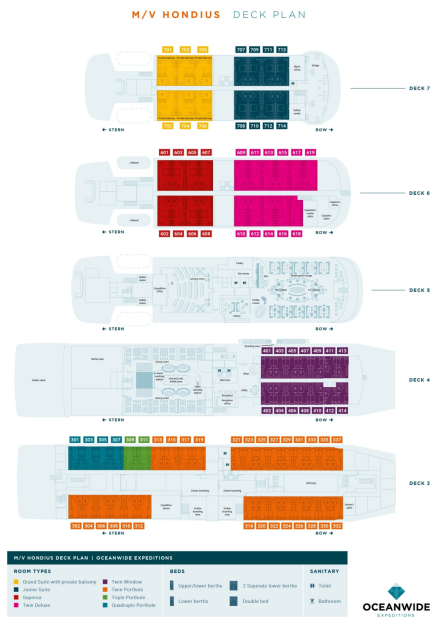


Wild Earth Travel
Small Ships, Big Adventures

wildearth-travel.com

info@wildearth-travel.com

INSIDE YOUR SHIP



Grand Suite with Private Balcony



Junior Suite



Quadruple Porthole



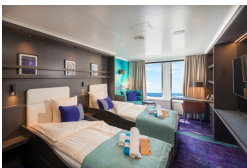
Superior



Triple Porthole



Twin Deluxe



Twin Porthole



Twin Window



Wild Earth Travel

Small Ships, Big Adventures

wildearth-travel.com

info@wildearth-travel.com

PRICING

05-Jun-2026 to 13-Jun-2026

Quadruple Porthole	2750 USD pp
Triple Porthole	3250 USD pp
Twin Porthole	3850 USD pp
Twin Window	4150 USD pp
Twin Deluxe	4350 USD pp
Superior	4950 USD pp
Junior Suite	5650 USD pp
Grand Suite with Private Balcony	6050 USD pp

Optional extras & upgrades

Birding. FREE

We will have at least one dedicated expedition guide in our team who will share their expert knowledge about bird species and who will be available to help you identify, photograph and learn more about the birds that we see.

Wild Earth Travel
Small Ships, Big Adventures

0800 945 3327 (within New Zealand) | +64 (0) 3 365 1355 | **1800 107 715** (within Australia)

info@wildearth-travel.com | **wildearth-travel.com**