



Wild Earth Travel

Small Ships, Big Adventures

wildearth-travel.com

info@wildearth-travel.com

Day 3 Vietnam Chau Doc - Vinh Xuong -ka'om Samnor Border

Travel by skiff along Bassac Canal to Chau Doc floating market then head off by van to Long Son Pagoda atop Sam Mountain. Ask the monks about their age-old Buddhist practices. Return via the bustling morning market. Optional 18-kilometers bike ride on Long Khanh Island or take a rickshaw ride to visit Tan Chau Market with our chef. After lunch, relax by the pool, try a traditional Khmer massage or learn to cook Mekong-inspired dishes while we cross the border.

Day 4 Cambodia Koh Oknha Tey - Preah Prosop

On this river of time we admire dexterous Khmer artisans dyeing and weaving kroma, the ubiquitous fabric no Khmer lives without. Explore the riverbank on two wheels if you wish, past Buddhist temples and thatch houses perched on spindly wooden stilts while white oxen wade just offshore. After lunch, we board our marine-grade aluminum skiffs and head towards the tamarind trees of Preah Prosop, a remote village little changed over several lifetimes.

Day 5 Cambodia Phnom Penh

We show off the Cambodian capital to our passengers by motorized tuk-tuk, the Royal Palace, Silver Pagoda and the National Museum of Cambodia, home to the world's largest collection of Khmer art. For those who wish, we visit the Tuol Sleng Museum of Genocide and the Killing Field or shopping at Russian Market. We bid farewell to 4-night guests who are disembarking in Phnom Penh. Return to welcome our 3-night passengers over custom sundowners like the Salted Watermelon Crush with Thai basil. Together we celebrate the onward journey towards the heart of this mighty river with a Khmer Apsara performance, an indigenous tradition memorialized on the temple walls at Angkor Wat.

Day 6 Cambodia Tonle Sap River - Koh Chen - Kampong Prasat

In the silversmith village of Koh Chen, we watch artisans producing the magnificent silverware favored by Khmer royalty. We continue to Udong, the royal capital from the 17-19th centuries, where we learn about a uniquely challenging Buddhist practice at the Vipassana Dhura, a meditation center. In the afternoon, a walking tour of Kampong Prasat offers a close-up perspective on local lives and their riverside environment.

Day 7 Cambodia Tonle Sap River - Kampong Chhnang - Kampong Tralach

In the cooler hours of the morning, we head out on skiffs to visit traditional potters and palm sugar producers in the village of Andong Russei. There'll be a chance to explore while riding mountain bikes or chauffeured by tuk-tuks. We'll pedal through the rice paddies to watch climbers scale the sky piercing palms towering over us. After lunch, there'll be more opportunities to bike through the countryside, go fishing, and discover the floating village of Kampong Tralach on board skiffs. Finally, we'll end the day with kayaking along the Tonle Sap and sundowners by the riverbank.

Day 8 Cambodia Phnom Penh

Customized exploration of Phnom Penh and disembarkation. Airplane transfers are provided if you would like to continue your Cambodian adventure to Siem Reap and its ancient lost city of Angkor Wat. Guests will be fully escorted by our guides in a private luxury car transfer to Phnom Penh Airport.

Please note:

Itineraries are subject to change.

Wild Earth Travel

Small Ships, Big Adventures

0800 945 3327 (within New Zealand) | +64 (0) 3 365 1355 | **1800 107 715** (within Australia)

info@wildearth-travel.com | **wildearth-travel.com**

Wild Earth Travel

Small Ships, Big Adventures

wildearth-travel.com

info@wildearth-travel.com

YOUR SHIP: AQUA MEKONG

YOUR SHIP:	Aqua Mekong
VESSEL TYPE:	Luxury River Expedition
LENGTH:	62.4 meters / 204 feet
PASSENGER CAPACITY:	40
BUILT/REFURBISHED:	2014

Spacious and indulgent, yet intimate enough to feel entirely exclusive, the Aqua Mekong incorporates relaxed yet refined lounging and dining areas and can accommodate a maximum of 40 guests plus crew. Modern navigation technologies and the highest cruise ship standards as well as our experienced river pilot and crew ensure smooth travel and safety on the water.

The Aqua Mekong has 20 air conditioned Design Suites, each one a generous 30 square meters (320 square feet), eight with balconies and all created entirely of local materials with the relaxed sophistication and contemporary comforts of a five star resort. Floor to ceiling panoramic windows allow guests to gaze upon the Mekong from the pillow top California king size bed that can be converted upon request into two full twin beds. More captivating views await on the plush, roomy daybed placed by the window wall or for our eight balcony accommodations, outside along with a romantic table for two. Those who wish to keep up on the world beyond these enthralling riverbanks will appreciate the flat screen television and complementary high speed wireless internet.

Sunlit indoors and out, the top level Observation Deck aboard the Aqua Mekong has been designed to seamlessly connect

guests with the constantly shifting landscape of floating Vietnamese villages, French colonial church spires and gilded Buddhist stupas along this mighty river, always in the utmost comfort. Whether one chooses to relax in the air conditioned Indoor Lounge, go horizontal under the sun outside at the ship's Outdoor Lounge area or cool off with a plunge in the shimmering pool at the bow side, the Observation Deck ensures that the river always remains in full view.

Guests gravitate to the Indoor Lounge in the mornings for ca phe a, Vietnamese coffee poured over ice with sweet condensed milk, between excursions to swap travelers tales and for daily lectures from the expert local guides.



cal guides.

Wild Earth Travel

Small Ships, Big Adventures

0800 945 3327 (within New Zealand) | +64 (0) 3 365 1355 | **1800 107 715** (within Australia)

info@wildearth-travel.com | wildearth-travel.com

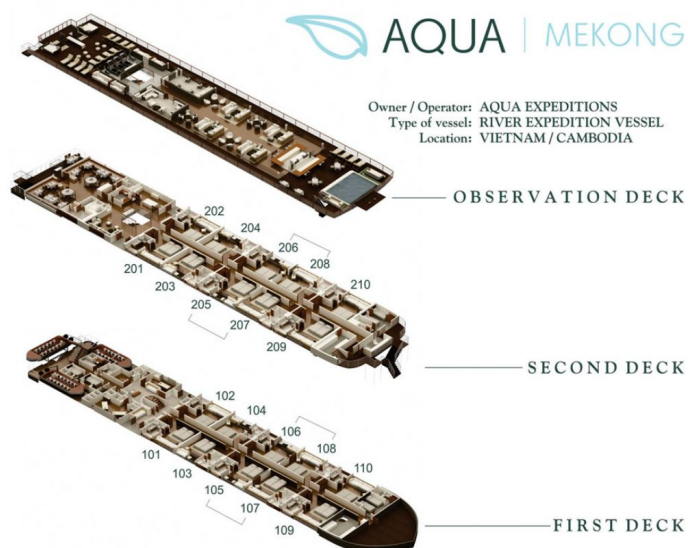
Wild Earth Travel

Small Ships, Big Adventures

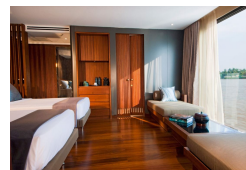
wildearth-travel.com

info@wildearth-travel.com

INSIDE YOUR SHIP



Suite. From



Wild Earth Travel

Small Ships, Big Adventures

0800 945 3327 (within New Zealand) | +64 (0) 3 365 1355 | 1800 107 715 (within Australia)

info@wildearth-travel.com | wildearth-travel.com

Wild Earth Travel

Small Ships, Big Adventures

wildearth-travel.com

info@wildearth-travel.com

PRICING

08-Aug-2025 to 15-Aug-2025

Suite. From 10290 USD pp

05-Sep-2025 to 12-Sep-2025

Suite. From 10290 USD pp

12-Dec-2025 to 19-Dec-2025

Suite. From 10290 USD pp

26-Dec-2025 to 02-Jan-2026

Suite. From 11340 USD pp

23-Jan-2026 to 30-Jan-2026

Suite. From 10570 USD pp

20-Feb-2026 to 27-Feb-2026

Suite. From 10570 USD pp

20-Mar-2026 to 27-Mar-2026

Suite. From 10570 USD pp

17-Apr-2026 to 24-Apr-2026

Suite. From 10570 USD pp

07-Aug-2026 to 14-Aug-2026

Suite. From 10570 USD pp

04-Sep-2026 to 11-Sep-2026

Suite. From 10570 USD pp

11-Dec-2026 to 18-Dec-2026

Suite. From 10570 USD pp

25-Dec-2026 to 01-Jan-2027

Suite. From 11690 USD pp

22-Jan-2027 to 29-Jan-2027

Suite. From 10920 USD pp

19-Feb-2027 to 26-Feb-2027

Suite. From 10920 USD pp

19-Mar-2027 to 26-Mar-2027

Suite. From 10920 USD pp

16-Apr-2027 to 23-Apr-2027

Suite. From 10920 USD pp

20-Aug-2027 to 27-Aug-2027

Suite. From 10920 USD pp

10-Dec-2027 to 17-Dec-2027

Suite. From 10920 USD pp

24-Dec-2027 to 31-Dec-2027

Suite. From 12010 USD pp