



Wild Earth Travel

Small Ships, Big Adventures

wildearth-travel.com

info@wildearth-travel.com

ANCIENT JEWELS OF THE MEDITERRANEAN - GREECE, ITALY & SICILY LUXURY CRUISE

Starting in Valletta, step aboard Le Bougainville for an 8-day cruise between the majestic Maltese coast and Greece.

Throughout your journey, you will benefit from an excursion included per person per port of call, to choose from a selection offered by PONANT. During this cruise, meet a famous puppeteer in his workshop in Syracuse, discover the typical villages of Lefkes and Naoussa on the island of Paros, or visit the former Rodolico shipyard in Aci Trezza, near Taormina.

The diversity of experiences on offer promises you intense and varied moments (to discover the full range of excursions, go to the itinerary tab).

Then, Southern Italy promises suspended moments where the beauty of the shores combines with the beauty of its historical remnants, which remain fascinating. In Syracuse, the Sicilian soul unfolds across the island of Ortygia - the oldest part of the city -, a maze of small streets dotted with churches, palaces, ancient remnants, sheltering a majestic cathedral in its very heart.

You will take the sea to discover Taormina, overlooking Etna's blanket of snow. Its streets will lead you to its famed ancient Greek theatre, where the quality of the acoustics is exceptional. In Puglia, Gallipoli, meaning "beautiful town" in Greek, reveals its Hellenic origins and offers up its singular atmosphere, where life is good.

You will then set sail for Galaxidi. You will be charmed by this picturesque village where calm and tranquillity reign. You will then cross the Corinth Canal and stop off at Hydra, a small island of old-worldly charm where motorised traffic is banned.

Finally, your ship will call at Paros. Nestling in the heart of the Cyclades archipelago, this island reputed for its sublime white marble offers a real concentration of Greek beauty, from whitewashed houses to olive groves to ancient monuments.

Athens, the mythical city dominated by the Acropolis and its monuments, which form the most extraordinary architectural and artistic ensemble bequeathed to the world by Ancient Greece, will mark the end of this exceptional odyssey.

Wild Earth Travel

Small Ships, Big Adventures

0800 945 3327 (within New Zealand) | +64 (0) 3 365 1355 | **1800 107 715** (within Australia)

info@wildearth-travel.com | **wildearth-travel.com**

Wild Earth Travel

Small Ships, Big Adventures

wildearth-travel.com

info@wildearth-travel.com



al odyssey.

ITINERARY

Day 1 ATHENS

The Greek capital city is located on the edge of the Saronic gulf, in the east of the country. It bears a plural name in reference to the first villages that surround the Acropolis. You will be enchanted by the rocky plateau presided by its monuments listed as UNESCO World Heritage. In the city below, you can visit some of the liveliest districts in Athens: Plaka, with its maze of colourful streets, and where, in the evenings the drifting aroma of moussaka and garlic prawns will tickle your taste buds. The National Archaeological museum and the Cycladic Art Museum are also some of the city's key attractions and allow visitors to discover Athens' cultural past.

Day 2 PATMOS

Patmos is one of the legendary must-see islands in the Dodecanese. This is

where Saint John resided, presumed author of the last book in the Bible. The cave of the Apocalypse and the Saint John Monastery are dedicated to him. These sites, which are listed by UNESCO as World Heritage, are located at the top of a hillside planted with vines and orchards. On the shore, the crystalline coves of Kambos and Lampi offer absolutely gorgeous swimming areas.

Day 3 HYDRA & CROSSING THE CORINTH CANAL

This unusual gem belonging to the Saronic islands is located to the east of the Peloponnese. There are no cars here. Named after the island, the harbour town is layered up the slopes of a mountainous bay. You may be surprised to see beautiful stone mansions. These are traditional here, as are the multi-coloured caiques along the quays. Further along the shore, you will discover the Historical Archives Museum. Collections from Athens National History Museum are exhibited in the elegant villa Koundouriotis. The Corinth Canal cuts through the Isthmus of Corinth, turning the Peloponnese into an island as it separates the region from the Greek mainland. Inaugurated in 1893, the canal is a little over six kilometres long and enables merchant vessels and passenger to avoid a long 400-km detour around the peninsula. The two sides of the canal reach a height of approximately fifty metres. From the exterior decks, don't miss this unique opportunity to watch the ship as it navigates along the narrow strip of water encased between tall, ochre cliffs. What an experience!

Day 4 ITEA

Tucked away in the Gulf of Corinth, this little port is situated in continental Greece, north-west of Athens. Take an easy stroll along the old cobblestone quays, while gazing at the summits encircling the Bay of Itea. We wouldn't be surprised if you are tempted by a visit to the Delphi Sanctuary. The sanctuary is located on a plateau on the slope of Mount Parnassus, just ten kilometres from Itea. A listed UNESCO World Heritage site, this is a once-in-a-lifetime experience whose ancient ruins are surrounded by steep mountains.

Day 5 KATAKOLON

This picturesque village stretches along the Ionian sea in the west of the Peloponnese. Its main harbour offers a vast panorama of the coastline's wooded hillsides. Dazzling white, the church of Saint-Nicolas houses a selection of sumptuous icons. You can also pay a visit the archaeological site

Wild Earth Travel

Small Ships, Big Adventures

0800 945 3327 (within New Zealand) | +64 (0) 3 365 1355 | **1800 107 715** (within Australia)

info@wildearth-travel.com | **wildearth-travel.com**



Wild Earth Travel

Small Ships, Big Adventures

wildearth-travel.com

info@wildearth-travel.com

of Olympus on the slopes of Mount Kronos.

Please Note:

Day 6 SYRACUSE, SICILY

Itineraries are subject to change.

Its undulating rocky coastline, the endless sandy beaches, the menacing form of Mount Etna which surveys its island like a patriarch, the flowery gardens on the hillside... Sicily lays out its varied landscapes like a shopkeeper displays his wares. Described by Cicero as "the most beautiful city in the world", Syracuse was one of the most prestigious cities in Sicily and at her height was even a rival for Athens. A central city of Ancient Greece, it was home to a succession of civilisations, each of which has left their mark. The blend of Arabic, Roman, Norman, Byzantine and Spanish cultures makes Syracuse a town that is extraordinarily rich in fragrances, colours and flavours.

Day 7 GOZO & VALLETTA

Located to the north of Malta, a lot less urbanised than its larger sibling and protected from mass tourism, the small island of Gozo has managed to remain natural and authentic. Lush hills and valleys alternate with a mosaic of cultivated fields. The buildings, some of which are medieval, are built from honey-coloured limestone and blend in perfectly with the surrounding scenery. Gozo also boasts a unique historic site that is now listed as a UNESCO World Heritage Site: the megalithic temples of Ggantija near the town of Xaghra. An archaeological museum adjoining the site presents a number of objects that were found there. Red-sand beaches and a crystal-clear sea add to the calm and serenity of Gozo.

Day 8 VALLETTA

The whole of the Maltese capital Valletta is UNESCO World Heritage listed and occupies a peninsula in the north-east of the island. From the fountain of Tritons to Saint-Elme fort, there are as many majestic streets as there are narrow staircase vennels to explore. The painted loggia and carved corbels on the tall houses will accompany you in your explorations, and you'll rarely be bothered by traffic. You can visit the Grandmasters palace decorated with coats of arms and frescoes. Saint-John's cathedral and the ramparts which have guarded the city since the 16th century are also among the most emblematic sites of the city. Arranged in terraces, the Barrakka Gardens will punctuate your promenade with a green and floral experience.

Wild Earth Travel

Small Ships, Big Adventures

0800 945 3327 (within New Zealand) | +64 (0) 3 365 1355 | **1800 107 715** (within Australia)

info@wildearth-travel.com | **wildearth-travel.com**



Wild Earth Travel

Small Ships, Big Adventures

wildearth-travel.com

info@wildearth-travel.com

YOUR SHIP: L'AUSTRAL

YOUR SHIP:	L'Austral
VESSEL TYPE:	Luxury Expedition / Cruise Ship
LENGTH:	142 metres
PASSENGER CAPACITY:	264 (200 in Antarctica)
BUILT/REFURBISHED:	2011

This superb mega-yacht with 132 cabins is the result of the expertise of the Italian Fincantieri shipyard and French sophistication, as interpreted by designer Jean-Philippe Nuel. L'Austral has a unique atmosphere, a subtle blend of luxury, intimacy and well-being.

A sleek silhouette softened by elegantly smooth contours and large, arched windows opening up to the sea and the light: so many features come together to give L'Austral her distinctive shape. Precious materials, discreet elegance and a perfect balance between chic and casual, combine to make you feel as if you are on your own private yacht. A design blending tradition and innovation, where a nautical mood has been subtly recreated. Precious materials in smoothing neutral tones are brought to life with splashes of cheerful reds. So many personal touches create the spirit of a "private yacht".

Cuisine

Loyal to the great French tradition, the haute cuisine on board is worthy of the finest restaurants, where discreet, attentive service is the hallmark.

Our two restaurants welcome you for breakfasts, lunch and dinner. The Gastronomic Restaurant, with a capacity of 268

persons, is situated on Le Liberte Deck and serves you French and international cuisine accompagnied by fine wine. On the Grill Restaurant, you will have the opportunity to eat outside and enjoy buffet lunch and themed dinner.

Life On Board

Whether you want to join other guests in the theatre or games area (Wii™ consoles, etc), or relax on your own in a quiet corner of the library, L'Austral has been designed to meet the needs of every guest.

Everything has been done to preserve the independence of each guest to suit their personal tastes: lounges for lectures and shows, a spa in partnership with Sothys™, but also more intimate spaces such as the library and internet corner. Comfortable cabins, nearly all with private balcony, are available for families either as triples or as communicating cabins. There is also a games area with Wii™ consoles, children's menus, and a baby-sitting service. Just as if you were on a private yacht, your time is your own to do as you please.

Fitted with the latest equipment (Kinesis Wall, running machine) and in partnership with the famous

Sothys™ brand, the Beauty Centre on L'Austral welcomes you for some unforgettable moments of relaxation and pampering (beauty treatments, hairdresser).



Wild Earth Travel

Small Ships, Big Adventures

0800 945 3327 (within New Zealand) | +64 (0) 3 365 1355 | **1800 107 715** (within Australia)

info@wildearth-travel.com | wildearth-travel.com



Wild Earth Travel

Small Ships, Big Adventures

wildearth-travel.com

info@wildearth-travel.com

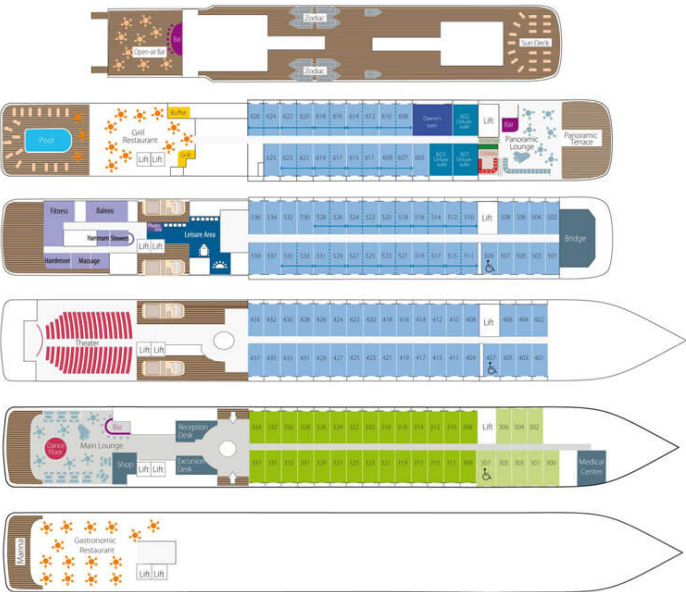
irdresser).

Wild Earth Travel
Small Ships, Big Adventures

0800 945 3327 (within New Zealand) | +64 (0) 3 365 1355 | **1800 107 715** (within Australia)

info@wildearth-travel.com | **wildearth-travel.com**

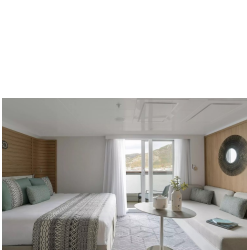
INSIDE YOUR SHIP



Deluxe Stateroom



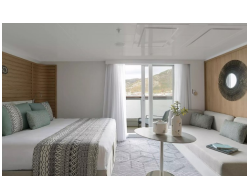
Deluxe Suite



Deluxe Suite Deck 3



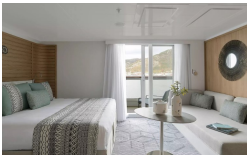
Deluxe Suite Deck 4



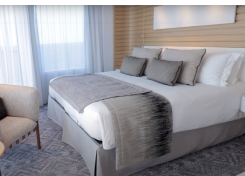
Deluxe Suite Deck 5



Deluxe Suite Deck 6



Grand Deluxe Suite



Grand Deluxe Suite Deck 5





Wild Earth Travel

Small Ships, Big Adventures

wildearth-travel.com

info@wildearth-travel.com

PRICING

15-Jun-2025 to 22-Jun-2025

Deluxe Stateroom	9030 AUD pp
Prestige Stateroom Deck 4	9510 AUD pp
Prestige Stateroom Deck 5	9990 AUD pp
Prestige Stateroom Deck 6	10570 AUD pp
Deluxe Suite Deck 6	17160 AUD pp
Deluxe Suite Deck 4	17160 AUD pp
Deluxe Suite	17160 AUD pp
Deluxe Suite Deck 5	17160 AUD pp
Prestige Suite Deck 5	19060 AUD pp
Prestige Suite Deck 6	19540 AUD pp
Privilege Suite Deck 6	20500 AUD pp
Privilege Suite	20500 AUD pp
Owner's Suite	24790 AUD pp
Grand Deluxe Suite	24790 AUD pp
Grand Deluxe Suite Deck 6	24790 AUD pp

25-Jul-2025 to 01-Aug-2025

Superior Stateroom	7430 AUD pp
Deluxe Stateroom	7830 AUD pp
Prestige Deck 4	8250 AUD pp
Prestige Deck 5	8670 AUD pp
Prestige Deck 6	9160 AUD pp
Deluxe Suite	14840 AUD pp
Prestige Deck 5 Suite	16480 AUD pp
Prestige Deck 6 Suite	16900 AUD pp



Wild Earth Travel
Small Ships, Big Adventures

0800 945 3327 (within New Zealand) | +64 (0) 3 365 1355 | **1800 107 715** (within Australia)

info@wildearth-travel.com | **wildearth-travel.com**

Wild Earth Travel

Small Ships, Big Adventures

wildearth-travel.com

info@wildearth-travel.com

PRICING

18-Oct-2025 to 25-Oct-2025

Deluxe Stateroom	8170 AUD pp
Prestige Stateroom Deck 4	8610 AUD pp
Prestige Stateroom Deck 5	9040 AUD pp
Prestige Stateroom Deck 6	9560 AUD pp
Deluxe Suite Deck 6	15490 AUD pp
Deluxe Suite Deck 4	15490 AUD pp
Deluxe Suite Deck 5	15490 AUD pp
Deluxe Suite	15490 AUD pp
Prestige Suite Deck 5	17200 AUD pp
Prestige Suite Deck 6	17630 AUD pp
Privilege Suite Deck 6	18500 AUD pp
Privilege Suite	18500 AUD pp
Grand Deluxe Suite Deck 6	22360 AUD pp
Grand Deluxe Suite	22360 AUD pp
Owner's Suite	24270 AUD pp

Deluxe Stateroom	8780 AUD pp
Prestige Deck 4	9240 AUD pp
Prestige Deck 5	9700 AUD pp
Prestige Deck 6	10250 AUD pp
Deluxe Suite Deck 3	16570 AUD pp
Deluxe Suite Deck 6	16570 AUD pp
Deluxe Suite Deck 4	16570 AUD pp
Deluxe Suite Deck 5	16570 AUD pp
Prestige Deck 5 Suite	18420 AUD pp
Prestige Deck 6 Suite	18870 AUD pp
Privilege Suite Deck 6	19790 AUD pp
Privilege Suite Deck 5	19790 AUD pp
Grand Deluxe Suite Deck 6	23910 AUD pp
Grand Deluxe Suite Deck 5	23910 AUD pp

ADDITIONAL CHARGES:

Port Taxes & Fees 520 AUD pp

23-Jun-2026 to 01-Jul-2026



Wild Earth Travel

Small Ships, Big Adventures

wildearth-travel.com

info@wildearth-travel.com

SPECIAL OFFERS

Online prices reflect the current brochure fare savings of up to 30%. Prices may change based on demand. Terms and conditions apply. This special offer is subject to availability. Please contact us for more details.

Wild Earth Travel

Small Ships, Big Adventures

0800 945 3327 (within New Zealand) | +64 (0) 3 365 1355 | **1800 107 715** (within Australia)

info@wildearth-travel.com | **wildearth-travel.com**