



ALASKA - INSIDE PASSAGE ROUTE

This cruise delivers an intimate encounter with Alaska's wilderness, made possible only by a small expedition ship, offering two Inside Passage options in summer 2026--southbound or northbound along the same stunning route. Highlights include towering mountains, dense forests, and ice-blue glaciers, with chances to spot bears, bald eagles, and whales in their natural habitat. The journey weaves through the rich history of Indigenous peoples, settlers, and gold prospectors, from Katmai National Park and Hubbard Glacier to the serene fjords and islands of the Inside Passage, blending raw nature with cultural depth.



ITINERARY

Day 1 Journey to Seward/Alaska/USA

Departure 22.00 hrs

Day 2 Relaxation at sea/Cruising in Katmai National Park

Alaska quenches your thirst for grand adventures in vast wilderness. The fabric from which explorer dreams are woven manifests itself in magnificent form on this unforgettable journey. With luck, while cruising in the bays of the sprawling Katmai National Park aboard the HANSEATIC inspiration, you might have opportunities to observe bears. The animals often dwell in the coastal vegetation here. Alongside your expert guides, you will keep watch from the many open deck areas.

Day 3 Homer/Alaska/USA

From 6.00 to 22.00 hrs



Wild Earth Travel

Small Ships, Big Adventures

wildearth-travel.com

info@wildearth-travel.com

Homer serves as your gateway for spectacular tours focused on bear watching in the wild: A seaplane takes you on a scenic flight to Brooks Falls¹, where, with some luck, you can observe brown bears fishing for salmon. Alternatively, you can fly to Lake Clark National Park¹, where a hike with a ranger offers opportunities to see brown bears in their natural habitat. From Homer, you can also actively explore Alaska's pristine nature on a hike¹ to a glacier lake or enjoy it leisurely on a boat trip.

Day 4 Kodiak

From 11.00 to 19.00 hrs

The main town of Kodiak Island was the second-largest settlement of Russian America until 1867. Today, the Russian Orthodox Church and the Kodiak History Museum serve as reminders of this era. Explore the small, charming Alaskan town at your own pace. A transfer will take you to Fort Abercrombie State Park¹, where you can stroll through the moss-covered coastal forest and past meadows of Arctic flowers. With some luck, you might even spot whales off the coast.

Day 5 Relaxation at sea

Day 6 Cruising in Tsaa Fjord (Icy Bay) and at Hubbard Glacier

Cruising through the Tsaa Fjord reveals some of the most picturesque landscapes in Alaska's storybook: towering alpine peaks, verdant forests, glaciers, and ice. As you approach the active Hubbard Glacier, your small expedition ship is in its element once again, safely navigating through the ice floes towards the glacier's edge, adapting to the ever-changing conditions.

Day 7 Alaska's Inside Passage: Chichagof Island

Guided by a sense of profound freedom, your adventure through the Inside Passage begins. Discover how people live in harmony with nature with a visit to the tiny community of Elfin Cove on Chichagof Island, home to only about 30 residents. As you traverse the Icy Strait, a popular summer habitat for humpback whale families, enjoy stunning views of wildlife and landscapes once more.

Day 8 Cruising in Tracy Arm and Endicott Arm

Now is the perfect time to explore the unspoiled soul of Alaska, with its deep fjords and scattered islands. In addition to the abundant wildlife, you will marvel at the towering cliffs of Tracy Arm, set against a backdrop of stunning glacier vistas. The same awe-inspiring scenery awaits you in Endicott Arm, where, with a bit of luck, you might spot whales and sea lions.

Day 9 Kupreanof Island, Petersburg

Arrival 23.30 hrs

You will discover the historical homeland of the Tlingit indigenous people with your expert guides on Kupreanof Island, under the watchful eyes of the world's largest single-piece totem pole.

Day 10 Petersburg

Departure 17.00 hrs

The picturesque town of Petersburg is affectionately known as "Little Norway." Painted floral garlands adorn the houses, enhancing the idyllic charm of the town. This picturesque setting is further enriched by the LeConte Glacier. Enjoy spectacular views of this southernmost tidewater glacier in North America during a jet boat ride¹ or a scenic flight.

Day 11 Wrangell

From 8.00 to 20.00 hrs

The picturesque town of Wrangell is one of the oldest settlements in Alaska. From here, embark on a bear-watching excursion at Anan Creek¹, where you may be fortunate enough to spot both black and brown bears. The adventure continues with a thrilling journey through the former gold rush territory of the Stikine River¹. For those who prefer a more active experience, a hike¹ in the Tongass National Forest or a kayaking tour¹ along the coast are excellent options.

Wild Earth Travel

Small Ships, Big Adventures

0800 945 3327 (within New Zealand) | +64 (0) 3 365 1355 | **1800 107 715** (within Australia)

info@wildearth-travel.com | wildearth-travel.com



Day 12 Ketchikan

From 7.00 to 18.00 hrs

Let yourself be captivated by the rich Native American culture in Ketchikan, and seize another opportunity for bear watching. A flight over the Misty Fjords¹ reveals deeply carved sea inlets, lush shores against towering mountains, and cascading waterfalls. This region leaves a lasting impression, whether you're exploring it on a Jeep and canoe adventure on Revillagigedo Island.

Day 13 - Day 14 Cruising through British Columbia's Inside Passage/Canada

The HANSEATIC inspiration then takes two days to journey through British Columbia's Inside Passage, with its countless islands, forested mountains, and small indigenous settlements along the shore. Experience magnificent panoramas from the inspiration Walk, possibly enhanced by sightings of orcas and bald eagles. A breathtaking final chapter to your very own adventure novel.

Day 15 Vancouver/Canada

Arrival 7.00 hrs

Please Note:

Itineraries are subject to change.



Wild Earth Travel

Small Ships, Big Adventures

wildearth-travel.com

info@wildearth-travel.com

YOUR SHIP: HANSEATIC INSPIRATION/NATURE/SPIRIT

YOUR SHIP:	Hanseatic Inspiration/Nature/Spirit
VESSEL TYPE:	Expedition
LENGTH:	138 m
PASSENGER CAPACITY:	230
BUILT/REFURBISHED:	2021

The HANSEATIC inspiration, a small, state-of-the-art expedition ship with a maximum of 230 guests, offers a perfect blend of adventure and comfort for explorers seeking to uncover the world's wonders. As an international vessel conducting cruises in both English and German, it brings over 30 years of expertise from a market leader in German-speaking countries to every journey. Each expedition is a masterpiece, passionately crafted to reveal far-flung worlds--be it icy realms, tropical paradises, wildlife havens, or cultural gems--making every voyage a unique discovery aboard this exceptional ship.

Features of all cabins and suites

An ocean view with even more: exclusively outside cabins and suites, almost all with balconies or French balconies

Spaciously designed - enjoy a relaxing stay in rooms from 21 m²/226 ft² up to 71 m²/764 ft² in size

Exceptionally equipped - for example, with binoculars, Nordic Walking poles, air conditioning, coffee machine and mini bar (free of charge) and 24-hour cabin service

Separable beds

Rain shower and heated wall in bathroom (e.g. for towels and

wet parkas)

Extensive infotainment with live broadcast and recordings of expert presentations, forwardview camera, navigation chart, films and much more

Restaurants

Aboard the HANSEATIC inspiration, a new kind of freedom blends adventure and pleasure with a culinary journey across three exceptional restaurants. The spacious HANSEATIC Restaurant offers flexible mealtimes and a free choice of seating, serving a daily-changing menu of global flavors inspired by local specialties, paired with fine wines and supported by attentive 24-hour cabin service. At the Lido Restaurant, guests can savor breakfast under the open sky or enjoy a perfectly grilled steak from the outdoor barbecue, complete with panoramic views and an open show kitchen. The specialty restaurant Nikkei fuses fine Japanese creations with modern Peruvian cuisine, delivering a unique dining experience that elevates exploration to new heights--all while bars in the Observation Lounge and HanseAtrium offer favorite drinks against stunning backdrops, from Nordic fjords to icy Antarctic vistas.

Fitness and Wellness

On the HANSEATIC inspiration, an extraordinary time out awaits after thrilling Zodiac rides, challenging hikes, or Arctic adventures. Unwind in the Ocean Spa, where a Finnish sauna with stunning ocean views, a gentle steam sauna, an ice fountain, and a relaxation room rejuvenate your senses, complemented by professional massages, cosmetic treatments, and eco-friendly products made from natural, vegan ingredients.

Wild Earth Travel
Small Ships, Big Adventures

0800 945 3327 (within New Zealand) | +64 (0) 3 365 1355 | **1800 107 715** (within Australia)

info@wildearth-travel.com | **wildearth-travel.com**



Wild Earth Travel

Small Ships, Big Adventures

wildearth-travel.com

info@wildearth-travel.com

Stay active in the 100 m² fitness room or separate course room--both with ocean vistas--guided by a fitness coach offering personalized advice and a variety of courses, either indoors or on deck. The pool area, with its flexible canopy, invites relaxation year-round, featuring water loungers, a whirlpool, and a bar, ensuring a perfect blend of indulgence and revitalization against the backdrop of the open sea.

Knowledge

Shore excursions and Zodiac rides come alive with deeper context through fascinating presentations in the HanseAtrium, a high-tech lounge where experts share daily precaps and recaps, doubling as an atmospheric evening bar for films and discussions. The Ocean Academy enhances the journey with a Study Wall and interactive poster of scientific insights, microscopes for exploring hidden wonders alongside experts, and Study Seats--with swivel touchscreens--for personal dives into science. Supported by travel diaries and destination videos, this immersive experience broadens horizons with cutting-edge tools and expertise.



expertise.

Wild Earth Travel
Small Ships, Big Adventures

0800 945 3327 (within New Zealand) | +64 (0) 3 365 1355 | 1800 107 715 (within Australia)

info@wildearth-travel.com | wildearth-travel.com

Wild Earth Travel

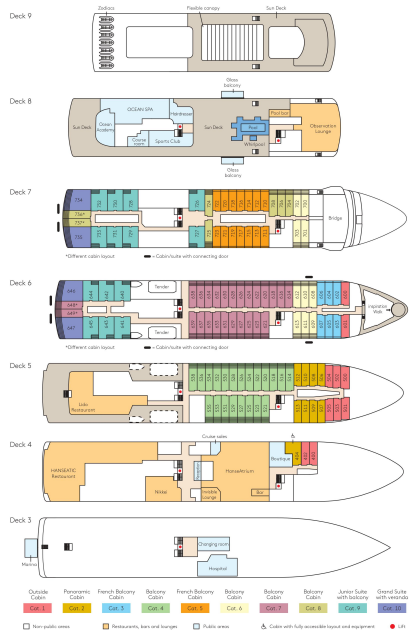
Small Ships, Big Adventures

wildearth-travel.com

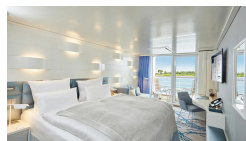
info@wildearth-travel.com

INSIDE YOUR SHIP

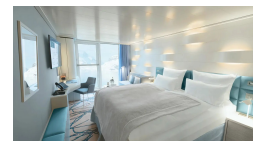
Deck plan HANSEATIC inspiration



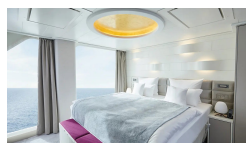
Balcony Cabin



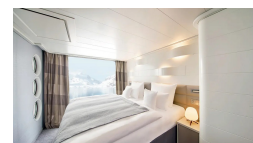
French Balcony Cabin



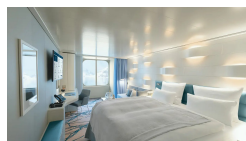
Grand Suite



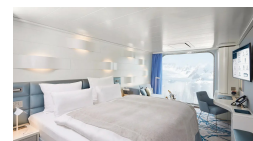
Junior Suite



Outside Cabin



Panoramic Cabin



Wild Earth Travel
Small Ships, Big Adventures

0800 945 3327 (within New Zealand) | +64 (0) 3 365 1355 | 1800 107 715 (within Australia)

info@wildearth-travel.com | wildearth-travel.com



wildearth-travel.com

info@wildearth-travel.com

PRICING

09-Jul-2026 to 23-Jul-2026

Panoramic Cabin	10490 EUR pp
Outside Cabin	10490 EUR pp
French Balcony Cabin	12750 EUR pp
Balcony Cabin	13560 EUR pp
Grand Suite	24950 EUR pp
Junior Suite	0 pp

23-Jul-2026 to 06-Aug-2026

Outside Cabin	10690 EUR pp
Panoramic Cabin	10690 EUR pp
French Balcony Cabin	12950 EUR pp
Balcony Cabin	14310 EUR pp
Junior Suite	18370 EUR pp
Grand Suite	0 pp