



AFRICA'S ROMAN RICHES - PORTUGAL, MOROCCO, ALGERIA, TUNISIA & ITALY CRUISE

Embark on a historic journey along the Mediterranean coast, from Lisbon to Sicily, exploring Roman ruins and Moorish castles in Seville, Algiers and Tunis. Roam through Tangier's medinas and Palermo's markets, visit the Kasbah of Algiers, and compare well-preserved Roman cities with Phoenician, Carthaginian and Byzantine sites. Uncover civilizations layered by history, witnessing the shared past and dynamic cultures of Africa and Europe.



ITINERARY

DAY 0 PRE CRUISE

One-night pre-cruise accommodation with breakfast in a 4/5-star hotel or onboard

DAY 1 LISBON

Spread over seven hills with Sao Jorge Castle views, bustling Lisbon is one of the world's oldest cities. Elegant Baixa, hilltop Alfama with its yellow tram, and scenic Graça overlooking pastel buildings, are top areas. The Jeronimos Monastery in Belem is a World Heritage Gothic site. The classic Portuguese pastel de nata custard tarts are a local treat. Europe's longest suspension bridge, the Ponte 25 de Abril, crosses the river Tagus.

DAY 2 PORTIMAO



The Algarve's second-most populous city of Portimao is best known for its historic quarter and dates back to the time of the Phoenicians. With the aroma of freshly cooked sardines drifting through the streets, Portimao is a wonderful spot for downtime. The city's Museum de Portico is housed in a 19th century cannery. Further into town, Praia da Rocha is one of the Algarve's most beautiful beaches.

DAY 3-4 SEVILLE

A city renowned for passion, culture and flamenco, Seville's intoxicating atmosphere will infuse even the weariest traveller with a celebratory spirit. The capital of Andalusia is revered for the grandeur of its monuments as well as for exquisite tapas dishes. The magnificent Catedral de Sevilla lords over the historic centre a short distance from the Alcazar (palace), a royal complex of rooms and gardens hidden behind modest terracotta walls.

DAY 5 TANGIER

Tangier, Morocco's northern port city, has been a gateway to Africa for centuries. Founded by the Phoenicians 3,000 years ago, Tangier's long, complex history is reflected in its labyrinthine Medina, 15th-century Portuguese fortress and Kasbah Museum of Mediterranean Cultures with its mosaic of Venus. Today, Tangier is a contemporary Moroccan city with a buzzing cafe culture and modern port.

DAY 6 DAY AT SEA

Sea days are rarely dull. Take the time to sit back and let the world go by. The ship's observation decks provide stunning views of the passing ocean. A day at sea gives you the opportunity to mingle with other passengers and share your

experiences of this incredible trip or head to our library which is stocked full of reference books. Get an expert's view in one of our on-board lectures or perhaps perfect your photography skills with invaluable advice from our onboard professional photographers.

DAY 7 ALGIERS

Founded in the 4th century, Algeria's capital, Algiers' UNESCO-listed Kasbah medina features winding streets, whitewashed buildings, Ottoman palaces and a ruined citadel. Other landmarks include the Great Mosque with a 14th-century minaret, the neo-Moorish Grande Poste and seafront fishermen's houses. Nearby, Tipaza, a former Carthaginian and Roman trading hub, is an archaeological site with a semi-circular theatre framed by the Med.

DAY 8 BEJAIA

A busy market town in Algeria's Kabylie region, Bejaia has one of the largest Berber-speaking populations. A vast statue commemorates the Algerian War of Independence. The city's tumultuous history is outlined in the Bejaia Museum, while relics of the past, including ancient caves, dot the outskirts of the city. Nearby Gouraya National Park hosts a colony of endangered Barbary macaques.

DAY 9 ANNABA

The Algerian port city of Annaba, known as Bone during the French occupation, has a rich 3,000-year history. French influence is evident, from Parisian-style nightlife on the Cours de la Revolution to the Basilica of Augustine, reminiscent of Paris' Sacre Coeur. Nearby, the sprawling ruins of the ancient city of Hippo Regius feature Roman baths and villas. The Commonwealth War Cemetery honours WWII soldiers and airmen who served in the region.

DAY 10 LA GOULETTE



Wild Earth Travel

Small Ships, Big Adventures

wildearth-travel.com

info@wildearth-travel.com

La Goulette port is the gateway to Tunisia's capital, Tunis, said to date to the 2nd millennium BC. Tunis shows its layered history in Parisian style cafe culture and Medina's traditional ways. Nearby ancient Carthage, a powerful rival to Rome, was the richest Phoenician city before Rome re-established it as a colony. Dating back to 900 BC, this fascinating UNESCO-listed Carthage Archaeological Park preserves Roman ruins, baths and artefacts.

DAY 11 PANTELLERIA ISLAND

Rugged volcanic cliffs overlook sapphire seas on Pantelleria, an Italian isle between Sicily and Tunisia. The volcanic heritage is evident in its striking landscapes, encompassing black sand beaches, lava fields and thermal springs. Vineyards and olive groves form terraced patterns around Lake Venere, famous for its geothermal hot springs and mud baths. Fragrances of capers and wild fennel drift on the sea breeze, adding to the island's charm.

DAY 12 PALERMO, SICILY

A feast for the senses, Sicily's capital is an intoxicating and chaotic melting pot offering up centuries of history and a street food bonanza. Three bustling markets Capo, Bollaro and Vucciria await those ready to embrace Palermo for all that it offers. Narrow side streets lead to hidden palaces and churches along Via Maqueda. The Palazzo dei Normanni, once the seat of Sicilian kings during Norman rule, showcases the city's past opulence.

Please Note:

Itineraries are subject to change.

Wild Earth Travel

Small Ships, Big Adventures

0800 945 3327 (within New Zealand) | +64 (0) 3 365 1355 | **1800 107 715** (within Australia)

info@wildearth-travel.com | **wildearth-travel.com**



YOUR SHIP: DIANA

YOUR SHIP:	Diana
VESSEL TYPE:	Expedition Ship
LENGTH:	125 meters
PASSENGER CAPACITY:	192
BUILT/REFURBISHED:	2022-2023

Arriving in early 2023, SH Diana will be the largest ship in our fleet, providing elegant and spacious 5-star accommodation for 192 guests in 96 spacious staterooms and suites, the vast majority with large balconies. Operated by an onboard team of 140 she will provide the highest levels of personal service and take Swan Hellenic back to its roots when she launches, exploring the Mediterranean and its famous sites of antiquity. Now sit back, relax and take a moment to get to know this amazing new ship, purpose-designed for our unique cultural expedition cruises.

Named after the Ancient Roman goddess of light, the moon, hunting and the wilderness, SH Diana been specially designed for worldwide cruising to explore the most inspiring and inaccessible places on earth. Building on the outstanding amenities of her sister ships, she adds a dedicated Multifunctional Room next to the Observation Lounge, a Private Dining Room for special occasions, and two tenders which bring guests a comfortable alternative to Zodiacs for expedition landings. A Polar Class 6 ice-strengthened hull combines with extra-large stabilisers to make your journey as comfortable as possible.

SH Diana has been designed for immersive experiences, with extensive outside deck areas, multiple observation points and bright, open and relaxing public spaces with unobstructed views. The pleasure and safety of our guests is paramount at all times, cared for by our attentive crew and seasoned expedition leaders. Cutting edge hygiene technology protects the health of all on board to the highest standards and includes air conditioning with UV sanitisation systems.

SH Diana's 96 staterooms , including 11 suites, are each a superbly comfortable home from home and all feature panoramic sea views, a flame-effect fireplace, original works of art, plush couches, premium pocket sprung mattresses, en-suite bathrooms with glass-enclosed rain showers, and Egyptian cotton towels, bathrobes and sheets. A pillow menu offers customised head and neck comfort during rest, while a large flat screen TV, espresso machine with Illy premium coffee, tea making facilities with the finest Kusmi teas, and a minibar with refreshments enhance relaxation at any time. In-room dining is of course available at all hours.



all hours.

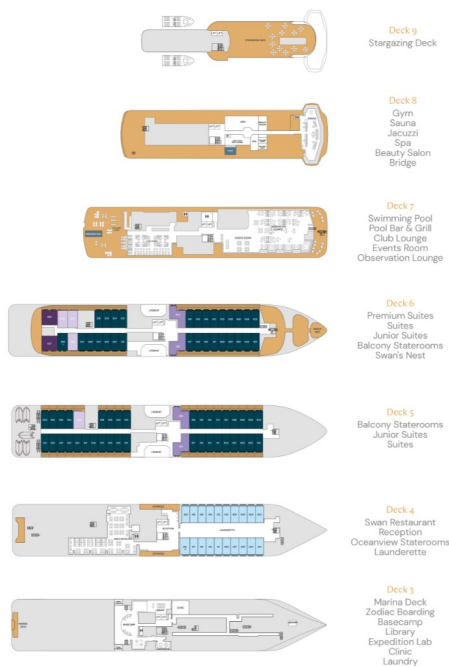


Wild Earth Travel
Small Ships, Big Adventures

wildearth-travel.com

info@wildearth-travel.com

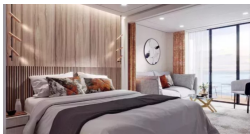
INSIDE YOUR SHIP



Balcony D5



Balcony D6



Balcony M5



Junior Suite



Oceanview D4



Oceanview M4



Premium Suite



Suite





PRICING

10-Aug-2025 to 22-Aug-2025

Oceanview D4	10381 AUD pp
Oceanview M4	10980 AUD pp
Balcony D5	13580 AUD pp
Balcony M5	14280 AUD pp
Balcony D6	14981 AUD pp
Junior Suite	18981 AUD pp
Suite	19980 AUD pp
Premium Suite	21981 AUD pp