



## ADVENTURE IN GREENLAND - FOLLOW IN THE FOOTSTEPS OF THE GREAT EXPLORERS

In partnership with Le Cercle Polaire, as part of the Women at the Poles operation with featured guest Laurent Mayet.

Set sail with PONANT on an itinerary discovering the unexplored shores of the eastern coast of Greenland. During this 15-day expedition cruise, you will follow in the footsteps of the great explorers who pushed the boundaries of polar navigation from the 19th century onwards.

From Longyearbyen in Spitsbergen, Le Boreal will make its way to Jan Mayen Island, which was very dear to Captain Jean-Baptiste Charcot. Located on the threshold of the Arctic and North Atlantic oceans, this isolated and uninhabited volcanic island was a whale hunting centre and is home to large bird colonies.

Set a course for Iceland to discover the charming village of Isafjörður, at the heart of the fjords in the north-west of the country, a wild place of lost valleys and vertiginous cliffs.

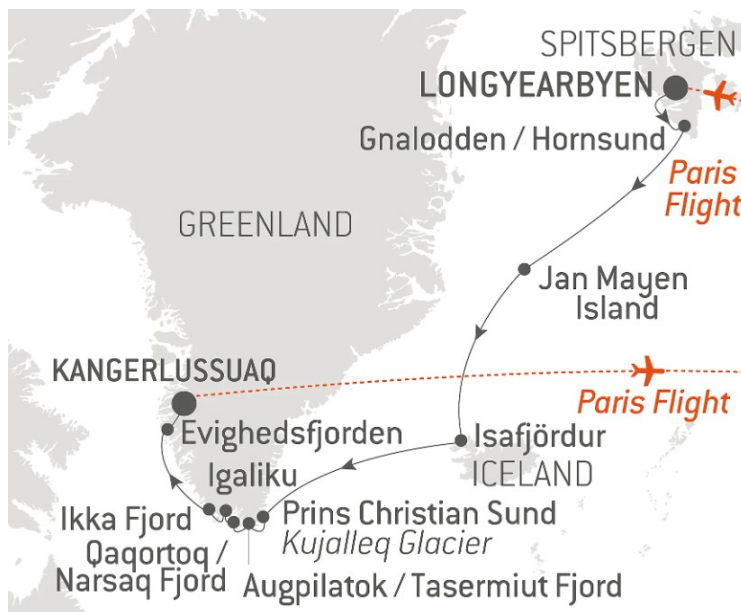
Your ship will then continue on to Greenland, known for its wild natural environments, its alpine landscapes and its majestic fjords. In this land of legend and of major polar explorations, you will follow in the footsteps of some of the great figures who decided to go beyond the limits of the known world.

In the vastness of this island, you will discover the narrow Prince Christian Sound, a waterway connecting the south-east of Greenland to the south-west. Mountains with jagged peaks,

rocky cliffs, waterfalls, and floating ice form a wonderful wild landscape in which frolic colonies of bearded seals.

During the last part of your cruise, you will sail up the West coast of Greenland. Along the way, admire the stunning Tasermiut and Ikka fjords and the blue-tinged icebergs of Narsaq. It is here, in the Qaqortoq region, that Erik the Red settled to establish what would become Greenland's first European settlement.

Your final stop will be Kangerlussuaq, where this unforgettable cruise will end.



e will end.



## ITINERARY

### Day 1 LONGYEARBYEN, SPITSBERGEN

Embarkation day - Paris/Longyearbyen

Flight Paris/Longyearbyen selected by PONANT.

Approximate flight duration: 4 h 30

We suggest you to be at the check-in counter 2 hours before departure.

We highly recommend you arrive in Paris the day before this flight.

Meet & greet at the airport by our local English-speaking representative.

Longyearbyen is the capital of the Norwegian Svalbard archipelago, located on Svalbard's main island, and is the northernmost territorial capital on the planet. With winter temperatures dropping to below 40°C, the landscapes of this mining town are simply breathtaking. The glaciers, the mountains stretching as far as the eye can see and the untouched nature, make you feel like you're in completely unexplored territory.

Transfer to the pier for embarkation.

### Day 2 GNALODDEN, SPITSBERGEN & HORNSUND

The Gnalodden Cliff culminates at over 700 metres high and is home to over a thousand species of sea birds. Tridactyl gulls, northern fulmars and thick-billed murre are lords and masters in this often deafening commotion, particularly during the nesting season. Polar bears and Arctic foxes also frequent the site, a delight for lovers of the animal kingdom. The "bird cliff", as it is known, is surrounded at its foot by very rich vegetation, unfurling its carpet of moss across a decor of wild tundra. During your visit, stop at the former hunter's cabin, which was also used as a satellite station during the 1930s.

Nestling between millennial glaciers and carved mountains, and considered to

be "the crown of Arctic Norway", Spitsbergen is a place that never sees the night. Your ship will take you closer to this fascinating archipelago and, more particularly, the Hornsund fjord. Considered to be Svalbard's southernmost fjord, it is especially reputed to be its most stunning: at the end of its vast bay, 8 great glaciers slowly make their way down to the sea before giving way to the many icebergs elegantly drifting along its cold and mysterious waters.

### Day 3 AT SEA

During your journey at sea, make the most of the many services and activities on board. Treat yourself to a moment of relaxation in the spa or stay in shape in the fitness centre. Depending on the season, let yourself be tempted by the swimming pool or a spot of sunbathing. This journey without a port of call will also be an opportunity to enjoy the conferences or shows proposed on board, depending on the activities offered, or to do some shopping in the boutique or to meet the PONANT photographers in their dedicated space. As for lovers of the open sea, they will be able to visit the ship's upper deck to admire the spectacle of the waves and perhaps be lucky enough to observe marine species. A truly enchanted interlude, combining comfort, rest and entertainment.

### Day 4 JAN MAYEN ISLAND, SVALBARD

The island of Jan Mayen, belonging to Norway, lies hidden off Greenland's coastlines, lost between the Arctic Ocean and the North Atlantic Ocean. This small piece of land is inhabited by only a handful of Norwegian meteorologists. Tongues of ice descend from its volcanic summit, which culminates at 2,227 metres and is covered with a thick glacial coat. These tongues join the sea, between ranges of black volcanic rocks at times tinged with red. If the sky is clement, you will have the chance to glimpse the summit, decked out in magnificent light. The visit of a small fin whale will perhaps enable you to complete this memorable picture.

### Day 5 AT SEA





## Day 8 PRINS CHRISTIAN SUND & KUJALLEQ GLACIER

Your ship glides silently towards the Greenland coast, in a setting punctuated by pointed peaks and majestic glaciers... You are on the verge of crossing the Prins Christian Sund, a narrow channel that stretches out and zigzags over some one hundred kilometres between Greenland's south-east and south-west. Fall under the spell of the primitive beauty of these unique landscapes, including rocky cliffs and waterfalls that are fed by the ice sheet and plunge into the icy waters. Here, bearded seals love to lie on the floating ice to soak up the sunshine.

In the immense and mythical Greenland, in the Prince Christian Sound region, your ship will make its way to the Kujalleq Glacier. You will be captivated by this frozen tongue, in front of which dance small icebergs and a few growlers. Growler is the surprising name given to chunks of ice that are smaller fragments of an iceberg. They are either white or, more remarkably, blue-green. Birds fly in your wake and bearded seals observe you from afar, stretched out on granite rocks. Combined with the surrounding ice, these rocks form a magical landscape that immerses you in the polar realm.

## Day 9 TASERMIUT FJORD

Tasermiut Fjord, a true natural wonder lying at the southern tip of Greenland, is 70 kilometres long. Isolated for much of the year by ice, the fjord cuts deep into the wild tundra, revealing breathtakingly beautiful hidden valleys and varied wildlife. You can also admire immense granite cliffs. The reflections of the mountains in the cold blue waters of the fjord make a magnificent landscape for you to explore in this part of Greenland.

## Day 10 QAQORTOQ & IGALIKU

Follow the Davis Strait currents and Qaqortoq, the largest town in southern

During your journey at sea, make the most of the many services and activities on board. Treat yourself to a moment of relaxation in the spa or stay in shape in the fitness centre. Depending on the season, let yourself be tempted by the swimming pool or a spot of sunbathing. This journey without a port of call will also be an opportunity to enjoy the conferences or shows proposed on board, depending on the activities offered, or to do some shopping in the boutique or to meet the PONANT photographers in their dedicated space. As for lovers of the open sea, they will be able to visit the ship's upper deck to admire the spectacle of the waves and perhaps be lucky enough to observe marine species. A truly enchanted interlude, combining comfort, rest and entertainment.

## Day 6 ISAFJÖRDUR

Your ship will take you to the heart of the fjords of North-West Iceland, a wild land of lost valleys and steep cliffs, where man struggles to survive. In this very isolated region we find the Isafjörður fjord, undoubtedly one of the most beautiful in the country, mainly for its relief, forged by many very ancient basaltic flows. The town of Isafjörður, which nestles at the back of its fjord, between imposing mountains, is a delightful little town that lives exclusively from fishing. The capital of the Western fjords, its old wooden houses bear witness to its past as a major fishing port.

## Day 7 AT SEA

During your journey at sea, make the most of the many services and activities on board. Treat yourself to a moment of relaxation in the spa or stay in shape in the fitness centre. Depending on the season, let yourself be tempted by the swimming pool or a spot of sunbathing. This journey without a port of call will also be an opportunity to enjoy the conferences or shows proposed on board, depending on the activities offered, or to do some shopping in the boutique or to meet the PONANT photographers in their dedicated space. As for lovers of the open sea, they will be able to visit the ship's upper deck to admire the spectacle of the waves and perhaps be lucky enough to observe marine species. A truly enchanted interlude, combining comfort, rest and entertainment.



# Wild Earth Travel

*Small Ships, Big Adventures*

**wildearth-travel.com**

**info@wildearth-travel.com**

Greenland, reveals itself in a rocky setting covered in immaculate white in winter and enchanting green in summer. From the moment your ship enters the fjord edging the town, off in the distance you will be able to glimpse the delightful, brightly-coloured houses built upon the hillsides surrounding this charming fishing port, the most southerly in Greenland. You will have the opportunity to wander around the streets of the town centre which have distinct Danish influences and are home to numerous historical buildings and landmarks, such as the country's famous and oldest fountain, topped with whales. Not far from there, you will also have the chance to discover the town's open-air fish market, where fishermen come to sell the day's catch.

In the curve of a magnificent, sinuous fjord, you will discover the small village of Igaliku, famous for having been the episcopal seat during the Viking period. A red sandstone cathedral dedicated to Saint Nicholas was built in 1126. Its ruins, discovered in 1926, revealed the earlier presence of a pagan sanctuary on this site. A small museum set up in the church presents the origins of the village, which grew after a Danish farmer and his Greenlandic wife settled there in 1782. Igaliku is the starting point of hikes to waterfalls and to Erik's Fjord or the Narsarsuaq plateau, which affords breathtaking views of the majestic icebergs in the fjord and of the Qooroq glacier.

## Day 11 NARSAQ

After sailing in the Kangerluarssuk fjord, discover the town of Narsaq. You will be dazzled by the beauty of the surrounding icebergs – large masses of ice in different shapes and shifting colours. Dominated by lush mountains, this small town is typical of Greenland. It is known for its sheep farming, made possible by the rich, grassy plains to the town's north. This rather rare activity reflects a past and a technique inherited from the Vikings. Admire the stunning interplay of colours between the multicoloured house facades and the glaciers with their myriad shades of blue, and dive into the Scandinavian history of Narsaq by visiting the local museum. A unique experience.

## Day 12 IKKA FJORD

As you sail through the majestic Ikka Fjord in south-west Greenland, you will

discover over 10,000 years of underwater geology, for mysterious columns up to 20 metres high, formed several millennia ago, rise up from the seabed. Their material, ikaite, gives the fjord its name. Truly magical! You glide over calm, clear waters amidst breathtaking mountains in the endlessly wild, huge area of Greenland.

## Day 13 AT SEA

During your journey at sea, make the most of the many services and activities on board. Treat yourself to a moment of relaxation in the spa or stay in shape in the fitness centre. Depending on the season, let yourself be tempted by the swimming pool or a spot of sunbathing. This journey without a port of call will also be an opportunity to enjoy the conferences or shows proposed on board, depending on the activities offered, or to do some shopping in the boutique or to meet the PONANT photographers in their dedicated space. As for lovers of the open sea, they will be able to visit the ship's upper deck to admire the spectacle of the waves and perhaps be lucky enough to observe marine species. A truly enchanted interlude, combining comfort, rest and entertainment.

## Day 14 EVIGHEDSFJORDEN & AT SEA

Your ship glides slowly along the water towards the west coast of Greenland, to enter Evighedsfjorden, just a few kilometres south of Kangerlussuaq. Evighedsfjorden means "the fjord of Eternity", and for good reason: just when you think you've reached the end of this stretch of sea measuring over 100 kilometres in length, it seems to go on forever, as though to bring even more pleasure to those sailing in it. The spectacular scenery ranges from glaciers to tundra with an abundant flora, and jagged cliffs where numerous bird species have taken up residence. Take the time to observe the white-tailed eagles and the colonies of seagulls and black-legged kittiwakes flying overhead in the area.

During your journey at sea, make the most of the many services and activities on board. Treat yourself to a moment of relaxation in the spa or stay in shape in the fitness centre. Depending on the season, let yourself be tempted by the

Wild Earth Travel  
*Small Ships, Big Adventures*

**0800 945 3327** (within New Zealand) | +64 (0) 3 365 1355 | **1800 107 715** (within Australia)

info@wildearth-travel.com | wildearth-travel.com



swimming pool or a spot of sunbathing. This journey without a port of call will also be an opportunity to enjoy the conferences or shows proposed on board, depending on the activities offered, or to do some shopping in the boutique or to meet the PONANT photographers in their dedicated space. As for lovers of the open sea, they will be able to visit the ship's upper deck to admire the spectacle of the waves and perhaps be lucky enough to observe marine species. A truly enchanted interlude, combining comfort, rest and entertainment.

#### Day 15 KANGERLUSSUAQ

From 1941 to 1992, the town of Kangerlussuaq in Greenland was home to an American military base. Nowadays, thanks to its international airport, it has become a transit point for travellers seeking adventure in the Far North. Located to the north of the Arctic Circle, this town is the starting point of magnificent discoveries surrounded by unspoiled nature. Indeed, just a few dozen kilometres from there it is possible to get close to the Greenland ice sheet, the largest body of ice in the Northern Hemisphere. From Kangerlussuaq, admire also the superb landscapes of tundra in autumnal colours, where Arctic hares, musk oxen, Arctic foxes, reindeer, falcons and eagles live.

Please note:

Itineraries are subject to change.





## YOUR SHIP: LE BOREAL

<b>YOUR SHIP:</b>	<b>Le Boreal</b>
<b>VESSEL TYPE:</b>	<b>Luxury Expedition / Cruise Ship</b>
<b>LENGTH:</b>	<b>142 meters</b>
	<b>264 (in twin cabins, 200 in Antarctica)</b>
<b>PASSENGER CAPACITY:</b>	<b>Antarctica)</b>
<b>BUILT/REFURBISHED:</b>	<b>2011</b>

A superb mega-yacht with 132 cabins, she is the fruit of the expertise of the Italian Fincantieri shipyard and French sophistication, as interpreted by designer Jean-Philippe Nuel. Le Boreal remains faithful to our philosophy - to create a unique atmosphere, a subtle blend of luxury, intimacy and well-being. Superior materials, discreet elegance and a tasteful decor combined with exterior and interior lines to reflect a nautical mood, subtly revisited. On board, soothing neutral tones are enlivened by splashes of red, our signature theme linking tradition and innovation to create personal touches in the spirit of a "private yacht".

### Cuisine

Loyal to the great French tradition, the haute cuisine on board is worthy of the finest restaurants, where discreet, attentive service is the hallmark.

Our two restaurants welcome you for breakfasts, lunch and dinner. The Gastronomic Restaurant, with a capacity of 268 persons, is situated on Le Liberte Deck and serves you French and international cuisine accompagnied by fine wine. On the Grill Restaurant, you will have the opportunity to eat outside

and enjoy buffet lunch and themed dinner.

### Life On Board

Whether you want to join other guests in the theatre or games area (Wii™ consoles, etc), or relax on your own in a quiet corner of the library, Le Boreal has been designed to meet the needs of every guest.

Everything has been done to preserve the independence of each guest to suit their personal tastes: lounges for lectures and shows, a spa in partnership with Carita™, but also more intimate spaces such as the library and internet corner. Comfortable cabins, nearly all with private balcony, are available for families either as triples or as communicating cabins. There is also a games area with Wii™ consoles, children's menus, and a baby-sitting service. Just as if you were on a private yacht, your time is your own to do as you please.

Fitted with the latest equipment (Kinesis Wall, running machine) and in partnership with the famous Carita™ brand, the Beauty Centre on Le Boreal welcomes you for some unforgettable moments of relaxation and pampering (beauty treatments, hairdresser, hammam, balneotherapy).



# Wild Earth Travel

*Small Ships, Big Adventures*



[wildearth-travel.com](http://wildearth-travel.com)[info@wildearth-travel.com](mailto:info@wildearth-travel.com)



eotherapy).



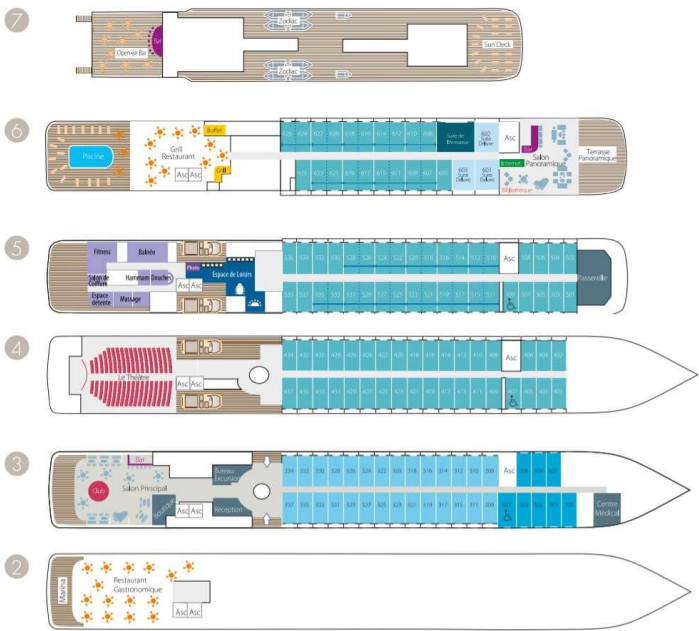


**Wild Earth Travel**  
*Small Ships, Big Adventures*

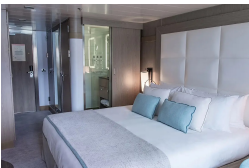
**wildearth-travel.com**

**info@wildearth-travel.com**

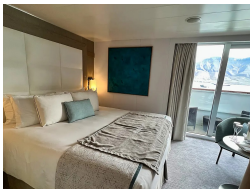
**INSIDE YOUR SHIP**



**DeLuxe Stateroom**



**Deluxe Suite**



**Owner's suite**



**Prestige Stateroom - Deck 4**



**Prestige Stateroom - Deck 5**



**Prestige Stateroom - Deck 6**



**Prestige Suite - Deck 5**



**Prestige Suite - Deck 6**



**Wild Earth Travel**  
*Small Ships, Big Adventures*

**0800 945 3327** (within New Zealand) | +64 (0) 3 365 1355 | **1800 107 715** (within Australia)

info@wildearth-travel.com | wildearth-travel.com





# Wild Earth Travel

*Small Ships, Big Adventures*

**wildearth-travel.com**

**info@wildearth-travel.com**

## PRICING

06-Jul-2025 to 20-Jul-2025

Superior Stateroom	19490 AUD pp
DeLuxe Stateroom	20830 AUD pp
Prestige Stateroom - Deck 4	22760 AUD pp
Prestige Stateroom - Deck 5	23720 AUD pp
Prestige Stateroom - Deck 6	24880 AUD pp
Deluxe Suite	33340 AUD pp
Prestige Suite - Deck 5	43920 AUD pp
Prestige Suite - Deck 6	46040 AUD pp
Owner's suite	67370 AUD pp

**ADDITIONAL CHARGES:** Port Taxes 1040 AUD pp

Wild Earth Travel  
*Small Ships, Big Adventures*

**0800 945 3327** (within New Zealand) | +64 (0) 3 365 1355 | **1800 107 715** (within Australia)

info@wildearth-travel.com | wildearth-travel.com



**Wild Earth Travel**  
*Small Ships, Big Adventures*

**wildearth-travel.com**

**info@wildearth-travel.com**

**SPECIAL OFFERS**

Online prices reflect the current brochure fare savings of up to 30%. Prices may change based on demand. Terms and conditions apply. This special offer is subject to availability. Please contact us for more details.