

Wild Earth Travel

Small Ships, Big Adventures

wildearth-travel.com

info@wildearth-travel.com

ABROLHOS ISLANDS & THE CORAL COAST - 13 DAY AUSTRALIA CRUISE

This expedition explores Western Australia's wild and largely untouched coast, with its contrasting coastal palette of rich red sands and turquoise sea. With a fascinating maritime and Indigenous history - from the Malgana people of Shark Bay to the exploratory journeys of William Dampier, Dirk Hartog, Baudin and Freycinet - this region is layered with stories. The natural coastal reserves harbour an abundance of bird life and fascinating marine species. Our guides will help guests explore the renowned Houtman Abrolhos Islands, Shark Bay World Heritage Area, Ningaloo Reef, Cape Range National Park, Montebello Islands, Muiron Islands and Dampier Archipelago. Onboard this voyage will be expert Guest Lecturer Howard Gray. Howard's passion and knowledge about the Houtman Abrolhos Islands and the amazing story of the discoverer Frederik de Houtman has brought to light much of the fascinating history of this region and been received enthusiastically by the community, including the local Wilunyu/Amangu people. His publication won the Royal West Australian Historical Society Williams/Lee Steere Prize for 'the best book on the history of Western Australia for 2019'.



ITINERARY

Day 1: Depart Broome / Fremantle

Broome Departures: Arrive at the Mangrove Hotel at 3:30pm before our transfer to Broome Deep Water Port for boarding at 4:00pm. Settle into your stateroom before our 5:00pm departure.

Fremantle Departures: Arrive at Fremantle's Victoria Quay, berth C for boarding at 8:00am, with time to settle into your stateroom before our 9:00am departure.

Wild Earth Travel

Small Ships, Big Adventures

0800 945 3327 (within New Zealand) | +64 (0) 3 365 1355 | **1800 107 715** (within Australia)

info@wildearth-travel.com | **wildearth-travel.com**



Wild Earth Travel

Small Ships, Big Adventures

wildearth-travel.com

info@wildearth-travel.com

Take the time to become acquainted with all the facilities onboard. As dusk falls join guests and the friendly crew as we enjoy the Captain's welcome drinks and sit down to the first of many delicious dinners.

Day at Sea

Relax on deck as we spend a day at sea, with onboard presentations from our Guest Lecturers, workshops, and demonstrations.

Dampier Archipelago

Consisting of 42 islands and islets, 25 of which are nature reserves; The iron-red islands of the Dampier Archipelago stand in bright contrast to the turquoise waters which surround them. The archipelago not only offers exceptional natural beauty but significant sites for Aboriginal and European Heritage, many of which are in National Heritage Listed Areas. Named after English explorer William Dampier who first visited the islands aboard the *Cygnets* in 1699; the islands' earliest inhabitants were the Yaburara people, as is evidenced by the thousands of rock engravings, shell middens and stone arrangements scattered across the area.

There will be ample opportunity to explore the area's historical and cultural sites before taking to the azure waters for swimming and kayaking. Birdwatchers will have the opportunity to see several species of migratory waders as well as sea eagles and ospreys. With luck, we may even see the elusive Rothschild's rock wallaby. **Please note viewing of aboriginal petroglyphs is subject to approval and guidance by traditional owners of the area, and cannot be guaranteed**

Montebello Islands

The Montebello Islands or 'Montes' are an archipelago of more than 250 limestone islands and islets off the coast of the Pilbara. Much to the delight of the birdwatchers among us, the islands are considered an Important Bird Area, as they support over 1% of the world's population of fairy and roseate terns, as well as sooty oystercatchers.

The Montes have an 'explosive' past. Alpha and Trimouille Islands were the sites of three British atomic weapons tests in the 1950s. Relics of the military

operation can still be found on the islands today. We will visit the plinth, which marks Ground Zero at Trimouille Island, where now you will find a haven for wildlife, including the rufous hare wallaby.

A fascinating maritime history surrounds Montebello Islands. Survivors of the British East India ship "Tryall" swam here after their ship was wrecked in 1622, therefore being the first Europeans to land on the islands.

We will spend a full day exploring this island group, including wildlife spotting opportunities and beautiful beach walks. Keep watch for the rare rufous hare wallaby and lagoon rays while exploring amazing vistas.

Muiron Islands & Serrurier Island

The Muiron Islands are located approximately 10 nautical miles off the North West Cape. The Islands are well known for their incredible reef, colourful soft corals, an abundance of turtles, schools of fish and even sightings of manta rays! A variety of dive sites are on offer at this destination, including swim-throughs and ledges where nudibranchs, eels and angelfish hide. With fantastic bommies and protected reef, snorkellers will appreciate the variety of soft corals and gorgonians as well the incredible fish life. Birdlife is abundant onshore - see if you can spot wedge-tail shearwaters, roseate terns, osprey, and black-shouldered kites (just to name a few).

Serrurier Island is located a further 20 nautical miles northeast of the Muirons. Here you will experience great coral competition and seagrass beds that feed the local dugongs.

The World Heritage listed Ningaloo Reef is the turquoise jewel in the crown of the Western Australian coastline. Spanning over 5,000 square kilometres, this is one of the largest fringing reefs in the world. It's inner and outer reefs create a diverse range of habitats for vibrant corals and more than 500 species of fish. This is also where mega marine life come to feed during their migrations, including humpback whales, giant manta rays, and the majestic whale shark. It is also a coastline with a fascinating heritage, where lonely whalers battled it out against the elements.

After in-water activities, stretch your legs on a stroll down the beach on these untouched islands.

Exmouth & Cape Range National Park (Ningaloo Reef)

Wild Earth Travel

Small Ships, Big Adventures

0800 945 3327 (within New Zealand) | +64 (0) 3 365 1355 | **1800 107 715** (within Australia)

info@wildearth-travel.com | **wildearth-travel.com**



Wild Earth Travel

Small Ships, Big Adventures

wildearth-travel.com

info@wildearth-travel.com

One of the longest and most pristine fringing reefs in the world, Ningaloo Reef has an unusually narrow continental shelf. The deep oceanic waters, reef and coastline communities are close in proximity, resulting in a huge array of significant and healthy marine life coexisting in one area. The Ningaloo Coast is also one of the most important turtle nesting rookeries in the Indian Ocean, with a significant maritime history from explorers, traders, pearl luggers, whaling and fishing.

Spend the day at Cape Range National Park with options to snorkel at Turquoise Bay, visit Yardie Creek via a 1.2km Nature Walk, head up to the Vlamingh Head lighthouse or visit the Ningaloo Centre. There will also be some free time to explore Exmouth.

Cruising the Ningaloo Coast

The remote and well-hidden Bateman's Bay, just north of Coral Bay, is a much more remote and untouched landscape in comparison with beautiful sand beaches.

Weather permitting we will make a short landing on the remote Ningaloo coast between Northwest Cape and Shark Bay, for a swim and a beach comb.

Shark Bay World Heritage Area

Explore the Shark Bay World Heritage Area, the first location in Western Australia to receive UNESCO World Heritage status in 1991. This is a region of colourful landscapes, rare flora and fauna, and home to a staggering 35% of all of Australia's bird species. Explore Francois Peron National Park, named after the naturalist on explorer Nicholas Baudin's expeditions.

Cruise past historic Cape Inscription, the site of Dirk Hartog's landing in 1616, and time permitting enjoy a refreshing swim off the sandy remote beach.

The Abrolhos Islands - Wallabi Group

The Abrolhos Islands consist of 122 islands, clustered into three main groups, the Wallabi, Easter and Pelsaert Groups. Lying in the steam of the southward flowing Leeuwin current, the marine environment here is a meeting place for tropical and temperate sea life. Common marine mammals include Australian

sea lions and bottlenose dolphins, and over 90 species of seabird have been identified. The treacherous reefs around these islands have claimed many wrecks over the centuries, the most famous being the Batavia in 1629 - whose Dutch crew swam ashore only to experience a brutal mutiny.

The Abrolhos islands offer a near-pristine natural environment with a diverse range of marine and terrestrial fauna and flora. This area also offers a rich history including shipwrecks and remnants of early colonial industries such as guano mining and commercial fishing.

We will spend three days exploring this area, visiting all three main groups: Pelsaert (Southern), Easter Group and the Wallabi Group.

A broad range of activities will be available across these three days including visiting historical sites, wildlife viewing and world-class diving and snorkelling sites. The Australian sea lions love to swim and play with snorkelers and divers here.

Today we will enjoy the chance to snorkel off picturesque Turtle Bay, and take a short walk along the beach where you may see tamar wallabies, skinks, and the endemic Abrolhos dwarf bearded dragons.

Cruise past the Pidgeon Islands, the wealthiest of the crayfishing islands. Birdwatch for ospreys, white-bellied sea eagles and caspian terns amongst other birdlife.

Conditions permitting, visit Beacon Island, also known as the Island of Angry Ghosts, where 126 men, women and children were massacred by the blood thirsty mutineers of this area over 400 years ago. Home to fantastic bird life, as well as the Batavia Memorial cairn and the coral pits are still evident from where Jeronimus Cornelisz (the mutiny ring leader) was held prior to his trial and execution.

The Abrolhos Islands - Easter Group

At the Easter Group we will have the opportunity to visit the sea lion colony at Little Sandy Island, home to the largest colony of sea lions in the Abrolhos.

Later, snorkel the vibrant coral reefs at locations such as Squid Hole, the Anemone Lump or Morley Island. Also enjoy the opportunity to bird watch at Wooded Island.

Activities will be subject to weather and tides as this area is known to be very



tidal and windy.

The Abrolhos Islands - Pelsaert (Southern)

At the Pelsaert (Southern) group we will have the opportunity to visit Liddon Pearl Farm and crayfishing operations on Post Office Island. Here we learn what is involved with growing the pearls, learning the different shells and pearl categories, and how the different types of pearls are set. We will also have insights into the renowned cray fishing industry of the island, from the family who has been in the Abrolhos for 4 generations. Later is the opportunity to snorkel the blue holes from the jetty.

At Sea

If weather conditions allow, this morning we will enjoy snorkelling at one of the Pelsaert groups outer reefs before a relaxing day at Sea cruising to Fremantle. This evening, celebrate the end of your voyage with your fellow passengers and crew at the Captain's Farewell drinks.

Day 13: Arrive Fremantle/ Broome

Fremantle Arrival: Arrive and disembark at Fremantle at 7:30am. Post-cruise transfers to CBD hotels or the airport are included.

Broome Arrival: Arrive in Broome this morning for an 8:00am disembarkation. A post-cruise transfer to Broome CBD or Airport is included. If you're not transferring directly to the airport why not spend the day visiting world-famous Cable Beach or stroll the historic streets of Chinatown in central Broome.

Please note:

This itinerary is an indication of the destinations we visit and activities on offer. Throughout the expedition we may make changes to the itinerary as necessary to maximise your expeditionary experience. Allowances may be made for seasonal variations, weather, tidal conditions, and any other event that may affect the operation of the vessel. Coral Expeditions suggests that you do not arrive on the day of embarkation or depart on the day of disembarkation due to any changes that may occur in scheduling.



0800 945 3327 (within New Zealand) | +64 (0) 3 365 1355 | **1800 107 715** (within Australia)

info@wildearth-travel.com | wildearth-travel.com

Wild Earth Travel

Small Ships, Big Adventures

wildearth-travel.com

info@wildearth-travel.com

YOUR SHIP: CORAL GEOGRAPHER

YOUR SHIP: Coral Geographer

VESSEL TYPE: Expedition

LENGTH:

PASSENGER CAPACITY: 120

BUILT/REFURBISHED: 2020

Expedition capabilities

- > Two trademark Xplorer tenders seat all passengers and facilitate comfortable shore excursions
- > Six zodiacs for more intrepid exploration
- > Lecture lounge for daily expedition briefings and expert presentations
- > Small onboard library featuring books on destinations and wildlife
- > Shallow draft and advanced navigation and propulsion systems allowing access to locations closed to large cruise ships

Marine immersion

- > Navigator lounge in the bridge
- > Over 1000 square metres of open deck space including a wrap-around promenade deck with panoramic views
- > Engine room tours and a high level of crew interaction with guests

Food and wine features

- > Single seating dining with communal table serves buffet breakfast and lunch, and multi-course table d'hote dinners
- > Showcase galley with viewing window creating fresh

small-batch cuisine featuring Australian and local produce

- > Multiple indoor and outdoor bars, including our Explorer bar on the sundeck for sunset drinks
- > Curated wine cellar featuring boutique wines and exceptional vintage Australian reds
- Guest comfort
 - > All outside-facing guest cabins with en-suite bathrooms; the majority have a private balcony
 - > Active stabilisers to dampen sea motion
 - > Well-equipped gym
 - > Passenger elevator
 - > Wi-Fi available in all guest areas



guest areas

Wild Earth Travel

Small Ships, Big Adventures

0800 945 3327 (within New Zealand) | +64 (0) 3 365 1355 | **1800 107 715** (within Australia)

info@wildearth-travel.com | wildearth-travel.com

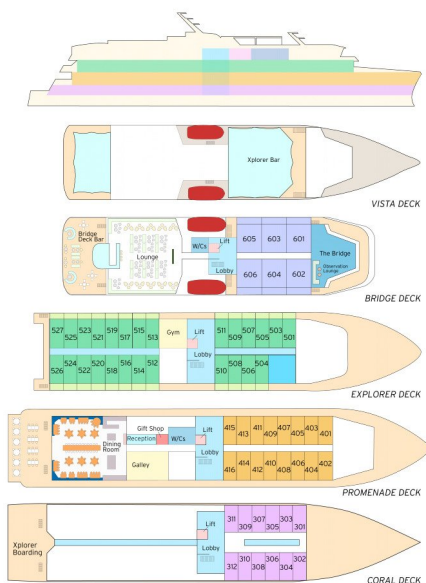
Wild Earth Travel

Small Ships, Big Adventures

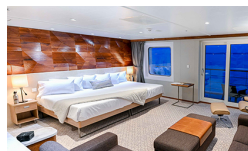
wildearth-travel.com

info@wildearth-travel.com

INSIDE YOUR SHIP



Bridge Deck Balcony Suite



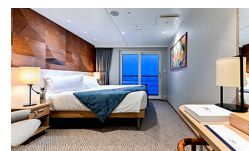
Coral Deck ■ Stateroom



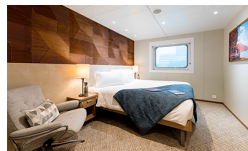
Coral Deck Stateroom



Explorer Deck Balcony Stateroom



Promenade Deck Stateroom



Wild Earth Travel

Small Ships, Big Adventures

wildearth-travel.com

info@wildearth-travel.com

PRICING

01-Aug-2025 to 13-Aug-2025

Coral Deck Stateroom	10700 AUD pp
Promenade Deck Stateroom	12840 AUD pp
Explorer Deck Balcony Stateroom	17130 AUD pp
Bridge Deck Balcony Suite	22990 AUD pp

14-Aug-2025 to 26-Aug-2025

Coral Deck Stateroom	10700 AUD pp
Promenade Deck Stateroom	12840 AUD pp
Explorer Deck Balcony Stateroom	17130 AUD pp
Bridge Deck Balcony Suite	22990 AUD pp

29-Mar-2026 to 10-Apr-2026

Coral Deck Stateroom	12900 AUD pp
Promenade Deck Stateroom	15480 AUD pp
Explorer Deck Balcony Stateroom	20640 AUD pp
Bridge Deck Balcony Suite	27780 AUD pp

11-Apr-2026 to 23-Apr-2026

Coral Deck Stateroom	12900 AUD pp
Promenade Deck Stateroom	15480 AUD pp
Explorer Deck Balcony Stateroom	20640 AUD pp
Bridge Deck Balcony Suite	27780 AUD pp