



Wild Earth Travel

Small Ships, Big Adventures

wildearth-travel.com

info@wildearth-travel.com

A CELEBRATION OF ART FEATURING THE 61ST VENICE BIENNALE - ADRIATIC & ITALY CRUISE

This cruise is part of a collection of PONANT themed voyages that are specially-tailored for English-speaking travelers who want to engage with the world. In addition to the usual elements of the PONANT experience, the listed price for these voyages includes transfers to and from the ship, talks and discussions aboard ship by world class experts, and a shore excursion or activity in each port of call that encourages guests to embrace the sights, sounds, tastes, and smells of the local environment and culture.

This carefully curated voyage from Valletta to Venice revels in the rich diversity of art and architecture found in Sicily and in the cities along Italy's Adriatic coast--the Greek and Roman ruins at Syracuse; the proudly Baroque architecture of Lecce; the Renaissance treasures of Urbino; and the Byzantine mosaics in Ravenna. But the true highlight of the journey is at its end in the glorious city of Venice, where our ship remains docked for two full days as we join in the world's premier celebration of contemporary art--the 61 st Venice Biennale--with exclusive visits to the Pinault Collection.

Our first port of call is the Sicilian city of Syracuse , which long rivaled Athens as one of the most powerful cities of the ancient world. You may choose to explore the extensive archaeological park, including the Roman Amphitheater of Augustus and a 15,000 seat Greek Theater. Or you may prefer to tour Ortygia , Syracuse's old town, home to many ancient monuments, including the city's Cathedral and the Palazzo Bellomo Museum.

During an afternoon in Otranto , visit the recently renovated Castello Aragonese, an art museum with marvelous views over the sea, and spend time exploring the Cathedral , known for its magnificent mosaics. Alternatively, you may travel to the hilltop town of Lecce , famous for its unique architectural style--_Barocco Leccese_ --an exuberant blending of Baroque and Rococo. A walking tour of this remarkable city includes the Piazza del Duomo and Cathedral and the Basilica of Santa Croce.

From the port city of Bari , drive through olive groves and wheat fields to reach Alberobello , a UNESCO World Heritage Site that features over 1,500 _trulli_ houses. These remarkable, white-washed structures with conical, domed roofs are constructed of local corbelled limestone without mortar, using a prehistoric building technique that has survived to this day.

Ancona offers the opportunity to travel to the town of Jesi, where the Holy Roman Emperor Frederick II was born, to tour its well-preserved center of Renaissance and Baroque palaces and churches. Or you may choose to spend the day exploring nearby Urbino, birthplace of Raphael and home to the Palazzo Ducale , which houses the National Gallery of the Marche , one of the most important collections of Renaissance art in the world.

Ravenna is an ancient city that in the early Middle Ages served as the center of Byzantine power in Italy. The churches built here in the 5th and 6th centuries were collectively designated a

Wild Earth Travel

Small Ships, Big Adventures

0800 945 3327 (within New Zealand) | +64 (0) 3 365 1355 | **1800 107 715** (within Australia)

info@wildearth-travel.com | **wildearth-travel.com**

Wild Earth Travel

Small Ships, Big Adventures

wildearth-travel.com

info@wildearth-travel.com

UNESCO World Heritage site in large part because of their stunning mosaics. You will visit several of these churches, including the Basilica of San Vitale, the nearby Mausoleum of Galla Placidia, which contains the earliest mosaics in Ravenna, and the Basilica of Sant'Apollinare.

Your voyage comes to an end with two glorious days in Venice celebrating the Biennale with a series of very special events. A tour of the Contemporary Art Biennale, conducted by official Biennale guides, is followed by a private tour of the Punta della Dogana, a former customs house converted to a museum to house part of the extensive Pinault Collection. And your final day of this extraordinary journey ends with an exclusive tour of the Pinault Collection's Palazzo Grassi and a festive dinner in the palace's atrium.



e's atrium.

ITINERARY

Day 1 - Valletta

The whole of the Maltese capital Valletta is UNESCO World Heritage listed and occupies a peninsula in the north-east of the island. From the fountain of Tritons to Saint-Elme fort, there are as many majestic streets as there are narrow staircase vennels to explore. The painted loggia and carved corbels on the tall houses will accompany you in your explorations, and you'll rarely be bothered by traffic. You can visit the Grandmasters palace decorated with coats of arms and frescoes. Saint-John's cathedral and the ramparts which have guarded the city since the 16th century are also among the most emblematic sites of the city. Arranged in terraces, the Barrakka Gardens will punctuate your promenade with a green and floral experience.

Day 2 - Syracuse, Sicily

Its undulating rocky coastline, the endless sandy beaches, the menacing form of Mount Etna which surveys its island like a patriarch, the flowery gardens on the hillside... Sicily lays out its varied landscapes like a shopkeeper displays his wares. Described by Cicero as "the most beautiful city in the world", Syracuse was one of the most prestigious cities in Sicily and at her height was even a rival for Athens. A central city of Ancient Greece, it was home to a succession of civilisations, each of which has left their mark. The blend of Arabic, Roman, Norman, Byzantine and Spanish cultures makes Syracuse a town that is extraordinarily rich in fragrances, colours and flavours.

Day 3 - Otranto

Located in the Apulia region, Otrante is the easternmost transalpine town. Behind its medieval ramparts, you will taste the sweetlife of Salento, the "heel on Italy's boot". Inhabited since Antiquity, Otrante has today become a very pleasant seaside town. Yet its history is still visible as you meander through the little streets of its old centre. With its magnificent 12th century ornamental mosaic tiling, the Cathedral is one of its most beautiful treasures. During a stroll along the ramparts, you can sit and relax at a cafe terrace.

Day 4 - Bari

Wild Earth Travel

Small Ships, Big Adventures

0800 945 3327 (within New Zealand) | +64 (0) 3 365 1355 | **1800 107 715** (within Australia)

info@wildearth-travel.com | wildearth-travel.com



Wild Earth Travel

Small Ships, Big Adventures

wildearth-travel.com

info@wildearth-travel.com

Extending out along a fertile plain facing the Adriatic Sea amid infinite landscapes sculpted by the water and wind, Bari bears the traces of the peoples which, over the centuries, have conquered it, settled it, or simply visited it fleetingly before making their way to faraway lands. Though its exact origins are lost among the mysteries of archaeology, the many sites here provide evidence of the town's rich past. The Saracens, Byzantines, Normans and Swabians have left a trace here, each bringing their own cultural baggage. During your stop here, stroll along the minuscule streets in Bari Vecchia, the historic centre, where you will find small churches and monuments from bygone eras.

Day 5 - Ancona

Situated on the promontory of Monte Conero, Ancona, the capital of the Marche region, offers visitors all the charm of a typical Italian historical city. Founded by the Greeks in 390 BC and conquered by Julius Caesar in 49 BC, Ancona has a long history that was very much shaped by its harbour, a hub attracting different populations and cultures. When your ship calls here, take the time to discover the city's many buildings, such as the cathedral dedicated to Judas Cyriacus and its façade made of white and pink marble, the Arch of Trajan, which is considered to be the port's main embellishment, or the 15th century mansion where the painter Raphael was raised.

Day 6 - Ravenna

Linked to the Adriatic Sea by a canal, the city of Ravenna and its countless monuments offer you a rich journey back in time. Roman and Byzantine cultures intermingle here, and the fruits of this history adorn the interiors of the city's religious buildings: the abundance of classical mosaics is the most stunning witness to Ravenna's glorious past. Eight UNESCO World Heritage listed Paleo-Christian sites punctuate your journey into the historic heart of the city. Still very lively despite the weight of its history, Ravenna has much to offer to visitors.

Day 7 - 9 - Venice

Proud and eternal, Venice has reigned on its lagoon ever since the 6th century. You may think you know this city before even setting foot here. You will

inevitably fall in love with the charm of the innumerable treasures of the Serenissima: Saint Mark's square, the basilica, Doges palace, the Grand Canal and the gondolas. Yet, secret Venice is also waiting for you to explore its little interlacing streets and canals, to ramble through its squares and to push open the doors of its churches. The city's extraordinary heritage shouldn't stop you from enjoying a glass of Spritz and a few tramezzini.

Please note:

Itineraries are subject to change.

Wild Earth Travel

Small Ships, Big Adventures

0800 945 3327 (within New Zealand) | +64 (0) 3 365 1355 | **1800 107 715** (within Australia)

info@wildearth-travel.com | **wildearth-travel.com**



Wild Earth Travel

Small Ships, Big Adventures

wildearth-travel.com

info@wildearth-travel.com

YOUR SHIP: LE BOUGAINVILLE

YOUR SHIP: Le Bougainville

VESSEL TYPE: Luxury

LENGTH:

PASSENGER CAPACITY: 92 cabins

BUILT/REFURBISHED: 2017/2018

Featuring innovative and environmentally-friendly equipment, elegantly designed cabins, spacious suites with large windows, and lounge areas that open onto the outside, this new limited-capacity yacht boasting just 92 cabins and suites will offer you a truly unique cruising experience.

As the first ship in a new series that remains true to the Ponant spirit, Le Bougainville will embody the unique atmosphere that is the cruise line's hallmark: a subtle blend of refinement, intimacy and comfort.

Aboard this ship that flies the French flag, you will experience the incomparable pleasure of an intimate cruise, with the possibility of exploring an ever-increasing range of destinations in an ethnic-chic ambiance with luxury service.

Experience a luxurious setting where the accent is on authenticity and passion for travel.

RESTAURANTS

As it is an essential part of French culture, gastronomy will naturally have pride of place aboard this new ship. Through its two restaurants, Le Bougainville will invite you on a journey to elegance and epicureanism.

In a relaxed atmosphere, a first dining area located on Deck 3

and able to seat 70 will serve grilled meats daily, along with a variety of salads and desserts.

To the back of Deck 4, you will find a 260 m² panoramic restaurant which can accommodate all of our passengers in a single sitting. Designed differently to that on our other ships, this dining area, which opens onto the outside, will have a buffet of salads, desserts and cheeses at your disposal. Our discreet and attentive crew will provide table service for hot meals.

PUBLIC AREAS

Like Le Boreal and its sisterships, Le Bougainville has many common areas that are designed and equipped to meet all of your needs while preserving the intimacy of each passenger.

A 140 m² reception area includes:

A reception/concierge desk, An excursions desk, The ship's administrative services, The sales office, manned by our Guest Relations Officer, Our 50 m² boutique which sells clothing, jewellery, beauty products, postcards and various accessories, Toilets accessible to passengers with reduced mobility.

A new hydraulic platform with adjustable height provides: Easier boarding than on any other cruise ship, Easier Zodiac embarkation and disembarkation for expeditions, Easier access to the sea for swimming and practising various water sports such as kayaking or paddle-boarding.

A pool deck offering: A pool with a panoramic view, equipped with a counter-current swimming system, A pleasant solarium, An outdoor bar and lounge with armchairs and sofas.

A 200 m² main lounge which can accommodate all of our passengers to share convivial moments and to host activities organised during the day or evening.

Wild Earth Travel

Small Ships, Big Adventures

0800 945 3327 (within New Zealand) | +64 (0) 3 365 1355 | **1800 107 715** (within Australia)

info@wildearth-travel.com | wildearth-travel.com

Wild Earth Travel

Small Ships, Big Adventures

wildearth-travel.com

info@wildearth-travel.com

Lastly, a theatre that seats 188, equipped with: The latest sound and lighting technology, A LED wall as the stage backdrop, for the projection of high-resolution images and videos.



and videos.

Wild Earth Travel

Small Ships, Big Adventures

0800 945 3327 (within New Zealand) | +64 (0) 3 365 1355 | **1800 107 715** (within Australia)

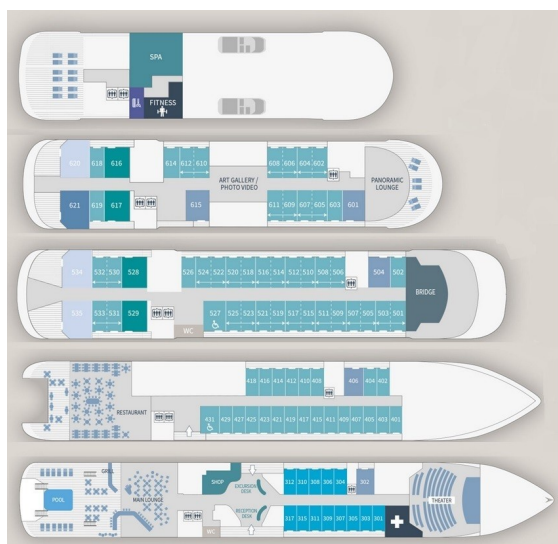
info@wildearth-travel.com | **wildearth-travel.com**



wildearth-travel.com

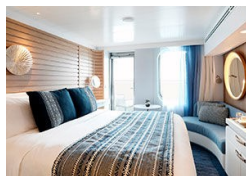
info@wildearth-travel.com

INSIDE YOUR SHIP

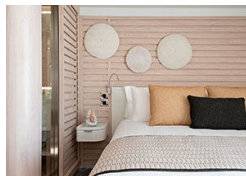


- Owner's Suite Deck 6
- Privilege Suites Deck 5-6
- Grand Deluxe Suites Deck 5-6
- Prestige Suites Deck 5-6
- Deluxe Suites Deck 5-6
- Prestige Cabins Deck 4-5-6
- Deluxe Cabins Deck 3

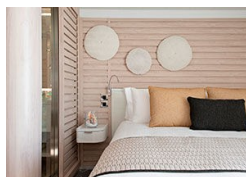
Deluxe Stateroom



Deluxe Suite Deck 4



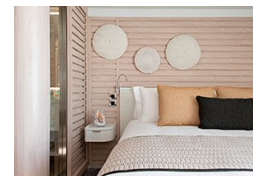
Deluxe Suite Deck 6



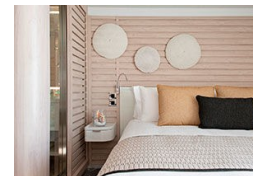
Grand Deluxe Suite Deck 6



Deluxe Suite Deck 3



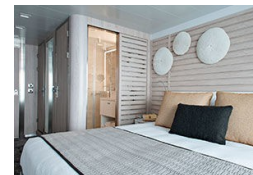
Deluxe Suite Deck 5



Grand Deluxe Suite Deck 5



Prestige Deck 4





Wild Earth Travel

Small Ships, Big Adventures

wildearth-travel.com

info@wildearth-travel.com

PRICING

01-Jul-2026 to 09-Jul-2026

| | |
|---------------------------|--------------|
| Deluxe Stateroom | 11000 AUD pp |
| Prestige Deck 4 | 11550 AUD pp |
| Prestige Deck 5 | 12100 AUD pp |
| Prestige Deck 6 | 12770 AUD pp |
| Deluxe Suite Deck 3 | 20410 AUD pp |
| Deluxe Suite Deck 4 | 20410 AUD pp |
| Deluxe Suite Deck 5 | 20410 AUD pp |
| Deluxe Suite Deck 6 | 20410 AUD pp |
| Prestige Deck 5 Suite | 22620 AUD pp |
| Prestige Deck 6 Suite | 23180 AUD pp |
| Privilege Suite Deck 6 | 24270 AUD pp |
| Privilege Suite Deck 5 | 24270 AUD pp |
| Grand Deluxe Suite Deck 5 | 29260 AUD pp |
| Grand Deluxe Suite Deck 6 | 29260 AUD pp |



Wild Earth Travel
Small Ships, Big Adventures

0800 945 3327 (within New Zealand) | +64 (0) 3 365 1355 | **1800 107 715** (within Australia)

info@wildearth-travel.com | **wildearth-travel.com**



Wild Earth Travel

Small Ships, Big Adventures

wildearth-travel.com

info@wildearth-travel.com

SPECIAL OFFERS

Online prices reflect the current brochure fare savings of up to 30%. Prices may change based on demand. Terms and conditions apply. This special offer is subject to availability. Please contact us for more details.

Wild Earth Travel

Small Ships, Big Adventures

0800 945 3327 (within New Zealand) | +64 (0) 3 365 1355 | **1800 107 715** (within Australia)

info@wildearth-travel.com | **wildearth-travel.com**