

Wild Earth Travel

Small Ships, Big Adventures

wildearth-travel.com

info@wildearth-travel.com

12 DAYS LUXURY ANTARCTICA CRUISE - PUERTO WILLIAMS TO KING GEORGE ISLAND

This exquisite 9-day voyage into Antarctica is an explorer's dream come true. From Puerto Williams we'll traverse Drake's Passage and delve into the awe-inspiring sights of the White Kingdom. From the thrill of witnessing a giant glacier soaring out of ice-strewn, glassy waters, to wildlife watching with our polar experts, who know the terrain intimately and will take you to the optimum places to view penguin rookeries or whales, every moment is an adventure.



ITINERARY

Days 0 - 1 - Pre Cruise & Puerto Williams

- _ ****Pre Cruise Benefits**** _
- _ ****Private Executive Transfers**** _
- _ ****International flights - Economy class**** _
- _ ****or Business Class upgrade**** _
- _ ****In-country flights/Group flights**** _
- _ ****Hotel**** _

Puerto Williams is a Chilean city located on Navarino Island on the southern shores of the Beagle Channel. It claims to be the "southernmost city in the world", however owing to its small size - 2500 residents approximately - the much larger Argentinean city of Ushuaia, which sits on the northern side of the

Wild Earth Travel

Small Ships, Big Adventures

0800 945 3327 (within New Zealand) | +64 (0) 3 365 1355 | **1800 107 715** (within Australia)

info@wildearth-travel.com | **wildearth-travel.com**

Wild Earth Travel

Small Ships, Big Adventures

wildearth-travel.com

info@wildearth-travel.com

same channel, also claims that title. The surrounding scenery is magnificent. The wild windswept mountains rise above the tree line and are regularly dusted with snow. The city itself has the dramatic backdrop called "Dientes de Navarino" (literally "teeth of Navarino"), which rival the famous Torres del Paine further to the north. The area was originally used by the Yaghan people, hunter-gatherers who despite enduring the harsh regional climate, could not weather the arrival of Europeans. The current city was established as a naval base in 1953 and honours the British-Chilean naval commander John Williams Wilson of the 16th century. Initially it served to protect territorial possessions and fishing rights of the area, as well as offering logistical support to Antarctic bases. More recently it has become a departure point for scientific and tourism trips to the Antarctic region. In contrast to the bustle and traffic of a very commercial Ushuaia, Puerto Williams offers a quieter, more relaxed experience. It charms the visitor with a small village feel, complete with rustic buildings and the homely smell of drifting wood smoke. A haven of peace at the end of the world.

Days 2 - 3 - Drake Passage

Sailing the legendary Drake Passage is an experience that few are ever lucky enough to experience. The southern tip of the Americas already feels like a wild enough environment - but the sensation of watching the distant cliffs of the peninsular known as the 'End of the World' fade into the horizon, is one that's equal parts epic, eerie and magical. Set sail, to slowly drop off the bottom of the map from Cape Horn, and voyage on an expedition down into the icy underworld of Antarctica. Drake Passage is an extraordinary voyage of romantic ocean faring legend, as you aim for Antarctica's icy realm. On arrival, skyscraper sized icebergs salute you, as you traverse the waters of this continent where snow and ice dwelling creatures like penguins and whales roam undisturbed. Your first sight of this most-unexplored place will most likely be the South Shetland Islands. Walk in the footsteps of some of history's greatest and bravest explorers as you explore famed, snow-covered landmasses like Elephant and Deception Island. If the journey across Drake Passage sounds daunting, don't worry - even in rough seas you're never alone, and will often be accompanied on this spine-tingling adventure by soaring albatrosses and maybe even a protective pod of humpbacks and hourglass dolphins or two. Converging warm and cool ocean currents attract some spectacular animal life to the passage. If this is your first visit to this magical continent, you'll also want to familiarise yourself with our blog for first timers to Antarctica.

Day 4 - Antarctic Sound

Few voyages ignite the imagination like a journey down to one of the planet's most remote, extreme and enchanting wilderness, Antarctica. An adventure in its purest form, only a handful of people will ever be lucky enough to experience the majestic beauty of these monochrome landscapes first-hand. The Antarctic Sound will be one of your first encounters of this whitewash kingdom, located at the northerly tip of the Antarctic Peninsula - which sprawls up like a tentacle towards Tierra del Fuego, South America's most southerly point, otherwise known as the 'End of the World'. Taking its name from the first ship to brave the passageway between the peninsular and the Joinville Island groups back in 1902, the Sound is a raw, sensory assault of imposing iceberg slabs, broken away from the disintegrating Larsen Ice Shelf. Come face-to-face with stadium-sized islands of ice and meet the extraordinary birdlife that call this whitewash kingdom home. Watch on, as colonies of Gentoo penguins hop around, and cape petrels sweep overhead, as the continent's unique wildlife thrives around you. If you're planning your first venture into Antarctica, you'll want to brush up on your photography skills in advance, to capture this unforgiving continent in all of its unrestrained glory. Read our blog for tips on how to ensure that your photos do justice to the adventure of a lifetime.

Days 5 - 8 - Antarctic Peninsula

The Antarctic Peninsula unravels upwards towards South America, reaching out a beckoning finger to the adventurous, who dare to explore this untamed realm. Stretching up from the heart of the world's southernmost continent, the Antarctic Peninsula lies a mere 620 mile from Tierra del Fuego and, for many, offers a spectacular first taste of the snow-blanketed landscapes and colossal ice sculptures, which make up Earth's least-explored continent. Unseen by humans until 1820 - a blink of an eye ago in relative terms - this is an adventure sure to make your hairs stand on end, as you experience the thrill of the truly unknown and extraordinary. The vast peninsula is sprinkled with research bases, which are at the frontline of human scientific endeavour, pushing to study and understand this unique landscape, its exceptional wildlife, and the impact that humans are having on this pristine continent. Witness cathedral-sized icebergs up close, and blue-hued glaciers, slowly slipping from imposing locations like Hope Bay. Blanched mountain peaks cover the peninsula, and you'll find thousands of adorable Adelie penguin pairs thriving undisturbed in this peninsula's unique setting.

Day 9 - South Shetland Islands

Wild Earth Travel

Small Ships, Big Adventures

0800 945 3327 (within New Zealand) | +64 (0) 3 365 1355 | **1800 107 715** (within Australia)

info@wildearth-travel.com | wildearth-travel.com

Wild Earth Travel

Small Ships, Big Adventures

wildearth-travel.com

info@wildearth-travel.com

The ice-coated Antarctic Peninsula forms perhaps the most accessible region of mainland Antarctica, lying a mere 480-miles away from South America, across the fabled waters of Drakes Passage. Lying close to the northwestern tip of the Antarctic Peninsula, separated by the Bransfield Strait, the South Shetland Islands fall under the jurisdiction of the Antarctic Treaty, suspending claims on their sovereignty. Several countries maintain research bases here, and with plump elephant seals, and crowds of Gentoo, Chinstrap and Adelie Penguins also calling the islands home, it can even feel a little crowded at times. King George Island is the largest and most hospitable island, hosting the majority of the research stations - some of which are populated all-year-round by tiny, hardy crews. Don't be fooled though, these islands offer extraordinary adventure in one of the most remote locations on earth. The triple peaks of Mount Foster tower above the archipelago, and you'll feel your heart pumping a little quicker, as you sail into the core of Deception Island's magnificent collapsed volcano caldera. Hike the luna landscapes within, and even dip into the improbably warm, geothermally-heated waters of Pendulum Cove. Elephant Island, meanwhile, is written deep into the annals of Antarctic expedition legend, as the site where Ernest Shackleton and the stricken crew of the Endurance miraculously survived a harsh Antarctic winter, in 1916. Discover even more reasons to visit this incredible icy kingdom and find out why many consider the South Shetland Islands to be the jewel in Antarctica's Crown, by reading our blog.

Day 10 - King George Island

As the largest of all the South Shetland Island, King George is considered the gateway to Antarctica. At just 120 kilometres from the Antarctic Peninsula and the only airport in the South Shetlands, it is the connection between "real life" and "Antarctic life". More than 10 different nations have year-round or summer-only scientific research stations on the island (considering that 90% of the island is covered by snow and ice, that is quite an achievement!). Maintaining a base on the island allows membership of the Antarctic Treaty. There is even a Russian Orthodox church, with a permanent on-site priest. The island might be home to a few international scientists, but they are very much outnumbered by the diverse wildlife that considers King George Island rightfully theirs. Adelie, Chinstrap and Gentoo Penguins all commute to and from the Antarctic peninsula from the island, while Weddell and leopard seals are regular visitors and can be spotted either in the water or on the shore. Naturally, this brings a huge amount of birdlife: skuas and southern giant petrels are regular summer residents, attracted by the warm climate (warm being a relative term, average temperature is between 1.5 and -6.5 °C). The island was named after King George III after British explorer discovered it in

1819. Since then the island has been claimed by both Chile (1940) and Argentina (1943), but remains part of British Antarctic Territory.

Day 11 - Post Cruise

- _ ****Post Cruise Benefits**** _
- _ ****Hotel**** _
- _ ****In-country flights/Group flights**** _
- _ ****International flights - Economy class**** _
- _ ****or Business Class upgrade**** _
- _ ****Private Executive Transfers**** _

Please note:

Itineraries are subject to change.

Wild Earth Travel

Small Ships, Big Adventures

0800 945 3327 (within New Zealand) | +64 (0) 3 365 1355 | 1800 107 715 (within Australia)

info@wildearth-travel.com | wildearth-travel.com

Wild Earth Travel

Small Ships, Big Adventures

wildearth-travel.com

info@wildearth-travel.com

YOUR SHIP: SILVER CLOUD

YOUR SHIP:	Silver Cloud
VESSEL TYPE:	Luxury Expedition
LENGTH:	157 m
PASSENGER CAPACITY:	200/260
BUILT/REFURBISHED:	1994 Refurbished & Rebranded

Silver Cloud delivers one of the most personalised expedition experiences at sea, blending ultra-luxury with true adventure. As Silversea's first crossover ship, she's built for both comfort and exploration, offering large ocean-facing suites--80% with verandas--and an impressive 1:1 crew-to-guest ratio. With 20 Zodiacs and 10 kayaks, guests enjoy unparalleled access to remote locations, while expert-led excursions ensure meaningful encounters with nature and culture alike. From the icy reaches of Antarctica to the sun-kissed South Pacific, Silver Cloud brings the remarkable within easy reach.

On board, refined living continues with four elegant dining venues, including French fine dining at La Dame and authentic Italian at La Terrazza. Relax in stylish public areas such as the Panorama Lounge or Connoisseur's Corner, indulge in world-class spa treatments, or learn more about your destinations from passionate experts in the Explorer Lounge. Whether you're cruising the Kimberley or the Chilean fjords, Silver Cloud offers a sophisticated base for discovering the far corners of the world in sublime comfort.



Wild Earth Travel

Small Ships, Big Adventures

0800 945 3327 (within New Zealand) | +64 (0) 3 365 1355 | **1800 107 715** (within Australia)

info@wildearth-travel.com | wildearth-travel.com

Wild Earth Travel

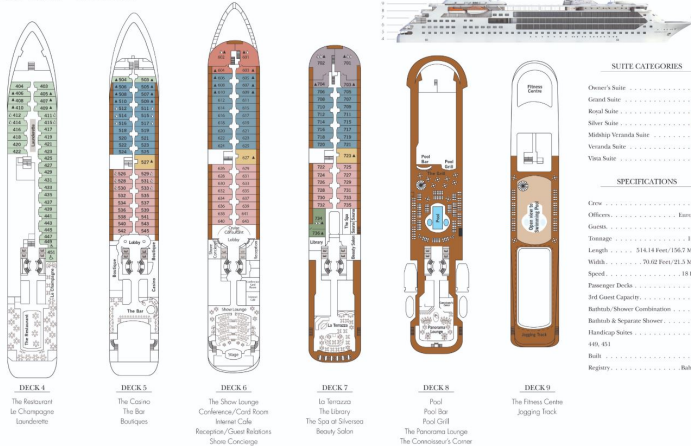
Small Ships, Big Adventures

wildearth-travel.com

info@wildearth-travel.com

INSIDE YOUR SHIP

Silver Cloud - DECK PLAN



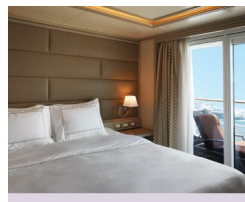
Grand 1 Bedroom



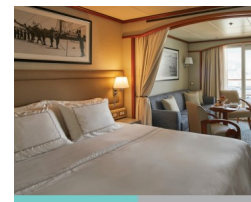
Grand 2 Bedroom



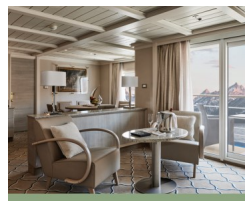
Medallion



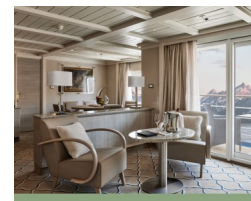
Midship Veranda



Owner 1 Bedroom



Owner 2 Bedroom



Wild Earth Travel

Small Ships, Big Adventures

0800 945 3327 (within New Zealand) | +64 (0) 3 365 1355 | 1800 107 715 (within Australia)

info@wildearth-travel.com | wildearth-travel.com

Wild Earth Travel

Small Ships, Big Adventures

wildearth-travel.com

info@wildearth-travel.com

PRICING

19-Oct-2026 to 30-Oct-2026

Vista	28100 AUD pp
Medallion	41100 AUD pp
Silver	43600 AUD pp
Royal 1 Bedroom	47300 AUD pp
Grand 1 Bedroom	51600 AUD pp
Owner 1 Bedroom	56300 AUD pp
Royal 2 Bedroom	77300 AUD pp
Grand 2 Bedroom	81600 AUD pp
Owner 2 Bedroom	81600 AUD pp
Midship Veranda	0 pp
Veranda	0 pp

Vista	28100 AUD pp
Medallion	41100 AUD pp
Silver	43600 AUD pp
Royal 1 Bedroom	47300 AUD pp
Grand 1 Bedroom	51600 AUD pp
Owner 1 Bedroom	56300 AUD pp
Owner 2 Bedroom	81600 AUD pp
Royal 2 Bedroom	77300 AUD pp
Grand 2 Bedroom	81600 AUD pp
Veranda	0 pp
Midship Veranda	0 pp

28-Oct-2026 to 08-Nov-2026

Vista	28100 AUD pp
Medallion	41100 AUD pp
Silver	43600 AUD pp
Royal 1 Bedroom	47300 AUD pp
Grand 1 Bedroom	51600 AUD pp
Owner 1 Bedroom	56300 AUD pp
Royal 2 Bedroom	77300 AUD pp
Owner 2 Bedroom	81600 AUD pp
Grand 2 Bedroom	81600 AUD pp
Midship Veranda	0 pp
Veranda	0 pp

24-Nov-2026 to 05-Dec-2026

Wild Earth Travel
Small Ships, Big Adventures

0800 945 3327 (within New Zealand) | +64 (0) 3 365 1355 | 1800 107 715 (within Australia)

info@wildearth-travel.com | wildearth-travel.com

Wild Earth Travel

Small Ships, Big Adventures

wildearth-travel.com

info@wildearth-travel.com

PRICING

20-Dec-2026 to 31-Dec-2026

Vista	28400 AUD pp
Veranda	32700 AUD pp
Midship Veranda	34100 AUD pp
Medallion	65300 AUD pp
Silver	70200 AUD pp
Royal 1 Bedroom	76600 AUD pp
Grand 1 Bedroom	83800 AUD pp
Owner 1 Bedroom	91600 AUD pp
Royal 2 Bedroom	106000 AUD pp
Grand 2 Bedroom	113200 AUD pp
Owner 2 Bedroom	117200 AUD pp

Vista	31900 AUD pp
Medallion	44700 AUD pp
Silver	45500 AUD pp
Royal 1 Bedroom	57500 AUD pp
Grand 1 Bedroom	62100 AUD pp
Owner 1 Bedroom	67700 AUD pp
Royal 2 Bedroom	92700 AUD pp
Grand 2 Bedroom	97800 AUD pp
Owner 2 Bedroom	99800 AUD pp
Midship Veranda	0 pp
Veranda	0 pp

29-Dec-2026 to 09-Jan-2027

Vista	31600 AUD pp
Veranda	36700 AUD pp
Midship Veranda	38300 AUD pp
Medallion	74100 AUD pp
Silver	79500 AUD pp
Royal 1 Bedroom	86900 AUD pp
Grand 1 Bedroom	95000 AUD pp
Owner 1 Bedroom	103900 AUD pp
Royal 2 Bedroom	119900 AUD pp
Grand 2 Bedroom	128000 AUD pp
Owner 2 Bedroom	132300 AUD pp

05-Jan-2027 to 16-Jan-2027

Wild Earth Travel
Small Ships, Big Adventures

0800 945 3327 (within New Zealand) | +64 (0) 3 365 1355 | **1800 107 715** (within Australia)

info@wildearth-travel.com | wildearth-travel.com

Wild Earth Travel

Small Ships, Big Adventures

wildearth-travel.com

info@wildearth-travel.com

PRICING

14-Jan-2027 to 25-Jan-2027

Vista	31900 AUD pp
Medallion	44700 AUD pp
Silver	45500 AUD pp
Royal 1 Bedroom	57500 AUD pp
Grand 1 Bedroom	62100 AUD pp
Owner 1 Bedroom	67700 AUD pp
Royal 2 Bedroom	92700 AUD pp
Grand 2 Bedroom	97800 AUD pp
Owner 2 Bedroom	99800 AUD pp
Midship Veranda	0 pp
Veranda	0 pp

Vista	31900 AUD pp
Medallion	44700 AUD pp
Silver	45500 AUD pp
Royal 1 Bedroom	57500 AUD pp
Grand 1 Bedroom	62100 AUD pp
Owner 1 Bedroom	67700 AUD pp
Royal 2 Bedroom	92700 AUD pp
Grand 2 Bedroom	97800 AUD pp
Owner 2 Bedroom	99800 AUD pp
Midship Veranda	0 pp
Veranda	0 pp

23-Jan-2027 to 03-Feb-2027

Vista	31900 AUD pp
Medallion	44700 AUD pp
Silver	45500 AUD pp
Royal 1 Bedroom	57500 AUD pp
Grand 1 Bedroom	62100 AUD pp
Owner 1 Bedroom	67700 AUD pp
Royal 2 Bedroom	92700 AUD pp
Grand 2 Bedroom	97800 AUD pp
Owner 2 Bedroom	99800 AUD pp
Veranda	0 pp
Midship Veranda	0 pp

01-Feb-2027 to 12-Feb-2027

Wild Earth Travel
Small Ships, Big Adventures

0800 945 3327 (within New Zealand) | +64 (0) 3 365 1355 | 1800 107 715 (within Australia)

info@wildearth-travel.com | wildearth-travel.com

Wild Earth Travel

Small Ships, Big Adventures

wildearth-travel.com

info@wildearth-travel.com

PRICING

10-Feb-2027 to 21-Feb-2027

Vista	31900 AUD pp
Medallion	44700 AUD pp
Silver	45500 AUD pp
Royal 1 Bedroom	57500 AUD pp
Grand 1 Bedroom	62100 AUD pp
Owner 1 Bedroom	67700 AUD pp
Royal 2 Bedroom	92700 AUD pp
Grand 2 Bedroom	97800 AUD pp
Owner 2 Bedroom	99800 AUD pp
Veranda	0 pp
Midship Veranda	0 pp

Vista	31900 AUD pp
Medallion	44700 AUD pp
Silver	45500 AUD pp
Royal 1 Bedroom	57500 AUD pp
Grand 1 Bedroom	62100 AUD pp
Owner 1 Bedroom	67700 AUD pp
Royal 2 Bedroom	92700 AUD pp
Grand 2 Bedroom	97800 AUD pp
Owner 2 Bedroom	99800 AUD pp
Veranda	0 pp
Midship Veranda	0 pp

19-Feb-2027 to 02-Mar-2027

Vista	31900 AUD pp
Medallion	44700 AUD pp
Silver	45500 AUD pp
Royal 1 Bedroom	57500 AUD pp
Grand 1 Bedroom	62100 AUD pp
Owner 1 Bedroom	67700 AUD pp
Royal 2 Bedroom	92700 AUD pp
Grand 2 Bedroom	97800 AUD pp
Owner 2 Bedroom	99800 AUD pp
Veranda	0 pp
Midship Veranda	0 pp

28-Feb-2027 to 11-Mar-2027

Wild Earth Travel
Small Ships, Big Adventures

0800 945 3327 (within New Zealand) | +64 (0) 3 365 1355 | 1800 107 715 (within Australia)

info@wildearth-travel.com | wildearth-travel.com



Wild Earth Travel

Small Ships, Big Adventures



wildearth-travel.com

info@wildearth-travel.com

PRICING

09-Mar-2027 to 20-Mar-2027

Vista	31900 AUD pp
Medallion	44700 AUD pp
Silver	45500 AUD pp
Royal 1 Bedroom	57500 AUD pp
Grand 1 Bedroom	62100 AUD pp
Owner 1 Bedroom	67700 AUD pp
Royal 2 Bedroom	92700 AUD pp
Grand 2 Bedroom	97800 AUD pp
Owner 2 Bedroom	99800 AUD pp
Midship Veranda	0 pp
Veranda	0 pp



Wild Earth Travel

Small Ships, Big Adventures

0800 945 3327 (within New Zealand) | +64 (0) 3 365 1355 | **1800 107 715** (within Australia)

info@wildearth-travel.com | **wildearth-travel.com**