



Wild Earth Travel

Small Ships, Big Adventures

wildearth-travel.com

info@wildearth-travel.com

83 DEGREE FARTHEST NORTH SPITSBERGEN EXTREME - PUSHING NORTHBOUND LIMITS

Explore varied landscapes and encounter diverse marine wildlife as you navigate Spitsbergen's beautiful fjords and coastline. Voyaging north beyond Phippsøya, you'll enter the sea ice, a frozen, floating world, and encounter polar bears and walruses before exploring the fascinating whaling history of Ytre Norskoya and the stunning flora and fauna of Bell Sund.



ITINERARY

Day 1: Largest town, biggest island



0800 945 3327 (within New Zealand) | +64 (0) 3 365 1355 | **1800 107 715** (within Australia)

info@wildearth-travel.com | wildearth-travel.com



Wild Earth Travel

Small Ships, Big Adventures

wildearth-travel.com

info@wildearth-travel.com

You find yourself in Longyearbyen, the administrative center of Spitsbergen, the largest island of the Svalbard archipelago. Enjoy strolling around this former mining town, whose parish church and Svalbard Museum make for fascinating attractions. Though the countryside appears stark, more than a hundred plant species have been recorded here. In the early evening, the ship sails out of Isfjorden, where you might spot the first minke whale of your voyage.

Day 2 - 9: North Spitsbergen

Kongsfjorden and Blomstrandhalvøya

Blomstrandhalvøya, located on the northern side of the fjord, offers shelter and the opportunity to change plans if the weather changes. In the afternoon, you visit Ny Ålesund, one of the northernmost settlements on Earth. Once a mining village served by the world's most northerly railway - the tracks are still visible - Ny Ålesund is now a research center.

If you're interested in the history of Arctic exploration, visit the anchoring mast used by polar explorers Amundsen and Nobile in their airships Norge (1926) and Italia (1928). In the evening, we will head north along the coast, looking for whales.

The immense Monaco Glacier

Depending on the weather, you could sail into Liefdefjorden, land at Texas Bar, and cruise within sight of the 5-kilometer-long (3.1 miles) face of the precipitous Monaco Glacier. The waters in front of this glacier are a favorite feeding spot for thousands of kittiwakes, and the base of the ice is a popular polar bear hunting ground. Another possibility is the mouth of Wijdefjorden, boasting both the tundra landscape and the glacier front of Nordbreen.

Or Sorgfjord, a reminder of hard times

You may turn to Sorgfjord, with sunken French and Dutch ships (17th century) lying deep below the surface. You have the chance to find a herd of walruses someway west of the graves of 17th-century whalers at Eolusneset. A nature walk here can bring you close to families of ptarmigans. The opposite side of the fjord at Heclahamna is also a beautiful area for an excursion in a semi-desert region.

A stop at the Seven Islands

At Phippsøya in the Seven Islands, you reach about 80° 30' north, just 870 km (540 miles) from the geographic North Pole. Polar bears and walruses inhabit this region. From here the ship sails northeastward toward the pack ice.

The northernmost point at 83 North

In the evening, we expect to reach our northernmost point at the edge of the sea ice or some way into it. The landscape within the pack ice is a beautiful and moving world. At this latitude, it makes its way from the Polar Basin to the southwest and southward along the coast of Greenland.

In the fringes of the sea-ice

Sailing southwest along and sometimes in the sea ice, we will enjoy fantastic opportunities to see bears, seals, various species of whale, and sometimes even the visually striking narwhal. On earlier voyages in this area, we have even encountered Ross's gulls, which winter in the Polar Sea.

Whalers from ages past

At Zeeuwse Uitkijk on Ytre Norskøya, the remains of a whaling station can be found. Here, once Europe's most northernmost outpost, Dutch whalers processed whale blubber and buried their dead. We are not allowed to visit the vicinity of their gravesites, but we may walk to the top of the island, which offers splendid views across the open sea and on the kittiwake colony on the east side.

An alternative landing site for this landing could be Smeerenburg, a former major whaling settlement. Many relics from this period, including tryworks, can be seen there.

Bell Sund's flora, fauna, and haunting history

Today, you find yourself in Bell Sund, one of the largest fjord systems in Svalbard. The ocean currents make this area slightly warmer than other areas in the archipelago, which shows in the relatively lush vegetation. Here, there are excellent opportunities to enjoy both history and wildlife. A possibility is Ahlstrandhalvøya; at the mouth of Van Keulenfjorden, you may discover piles of beluga skeletons. These remains of 19th-century whale slaughter are a haunting reminder of the consequences of rampant exploitation. Fortunately, belugas were not hunted to extinction, and you have a good chance of coming across a pod. Alternately, while cruising the side fjords of Bellsund, you can

Wild Earth Travel
Small Ships, Big Adventures

0800 945 3327 (within New Zealand) | +64 (0) 3 365 1355 | **1800 107 715** (within Australia)

info@wildearth-travel.com | **wildearth-travel.com**



Wild Earth Travel

Small Ships, Big Adventures

wildearth-travel.com

info@wildearth-travel.com

explore tundra - a favored feeding ground for reindeer.

Day 10: There and back again

Every adventure, no matter how grand, must eventually come to an end. You disembark in Longyearbyen, taking home Arctic memories that will accompany you forever. The pioneering spirit you will have experienced with us will stay with you wherever your next adventure lies.

Please note:

The chances that we reach 83 Degrees North in the first week of September, based on ice charts from the last seven years, are about 90%. All itineraries are for guidance only. Programs may vary depending on ice, weather, and wildlife conditions. Landings are subject to site availabilities, permissions, and environmental concerns per AECO regulations. Official sailing plans and landing slots are scheduled with AECO prior to the start of the season, but the expedition leader determines the final plan. Flexibility is paramount for expedition cruises. The average cruising speed of our vessel is 10.5 knots.

Wild Earth Travel
Small Ships, Big Adventures

0800 945 3327 (within New Zealand) | +64 (0) 3 365 1355 | **1800 107 715** (within Australia)

info@wildearth-travel.com | **wildearth-travel.com**



Wild Earth Travel

Small Ships, Big Adventures

wildearth-travel.com

info@wildearth-travel.com

YOUR SHIP: HONDIOUS

YOUR SHIP:	Hondius
VESSEL TYPE:	Polar Class Expedition Ship
LENGTH:	107.6 metres
PASSENGER CAPACITY:	170
BUILT/REFURBISHED:	2019

Hondius is the first-registered Polar Class 6 vessel in the world, meeting the latest and highest Lloyd's Register standards for ice-strengthened cruise ships. Surpassing the requirements of the Polar Code adopted by the International Maritime Organization (IMO), Hondius represents the most flexible, advanced, innovative touring vessel in the polar regions, thoroughly optimized for exploratory voyages that provide you the utmost first-hand contact with the Arctic and Antarctica.

Happier polar passengers, healthier polar environment

Not only will the numerous amenities and on-board entertainments help make your Hondius voyage truly memorable, this ship also gives you the peace of mind that comes with choosing one of the most environmentally friendly vessel on the polar seas. Hondius uses LED lighting, steam heating, bio-degradable paints and lubricants, and state-of-the-art power management systems that keep fuel consumption and CO2 levels minimal. This means that when you sail aboard Hondius, you get to enjoy the exotic landscapes and wildlife as much as possible while impacting them as little as possible.

Hotel comfort, expedition class

Please be aware that a small number of cabins may have a partially obstructed view due to the size of the windows and the design requirements of the ship. For example, some windows may be partly obstructed in the lower half by a gangway. The best view is always on the outer deck or the bridge. Hondius offers high-quality accommodation for 170 passengers in six grand suites with balconies (27 square meters, 291 square feet), eight junior suites (19 to 20 square meters, 205 to 215 square feet), eight superior cabins (20 to 21 square meters, 215 to 226 square feet), 11 twin deluxe cabins, (19 to 21 square meters, 205 to 226 square feet), 14 twin window cabins (12 to 14 square meters, 129 to 151 square feet) as well as 27 twin porthole cabins, two triple porthole cabins, and four quadruple porthole cabins that vary in size from 12 to 18 square meters, or 129 to 194 square feet. One deck consists of a large observation lounge and separate lecture room, which are reserved for a wide variety of interactive workshops, exhibitions, and performances particular to Hondius. Though elegantly designed in stylish mid-century modern decor, this vessel holds true to Oceanwide's distinctive cozy and informal atmosphere.

Swift & safe ship-to-shore operations

It is our philosophy to keep sea time short so that we can focus instead on fast, effective access to shore and near-shore activities. To give you the maximum contact with the nature and wildlife you traveled so far to see, we employ a tough fleet of rigid-hull inflatable Zodiac boats that guarantee swift and safe landing operations for the passengers. Hondius has two separate gangways and a sheltered indoor Zodiac boarding area

Wild Earth Travel
Small Ships, Big Adventures

0800 945 3327 (within New Zealand) | +64 (0) 3 365 1355 | **1800 107 715** (within Australia)

info@wildearth-travel.com | **wildearth-travel.com**



wildearth-travel.com

info@wildearth-travel.com

that can also be used for special outdoor activities, such as kayaking.

The fast, flexible, friendly heart of the polar regions

Our top priority is taking advantage of every wildlife and terrain opportunity as it occurs. To keep our itineraries flexible itineraries and our response time rapid, Hondius is equipped with advanced stabilizers and two main engines capable of powering the vessel up to 15 knots. But Hondius sacrifices no warmth to achieve its keen polar edge: You will have 70 crew and staff members (including expedition and hotel staff) at your service while on board, ensuring that what little time you do spend on the ship you will spend comfortably entertained.

Age and nationality

Passengers on a typical voyage range from in their 30s to their 80s, with the majority usually between 45 65. Our expeditions attract independent travelers from around the globe who are characterized by a strong interest in exploring remote regions. The camaraderie that develops on board is an important part of the Oceanwide experience, and many passenger groups include several nationalities.

What to wear

In keeping with the spirit of expedition, dress on board is informal. Bring casual and comfortable clothing for all activities, and keep in mind that much of the scenery can be appreciated from deck which can be slippery. Bring sturdy shoes with no-slip soles, and make sure your parka is never far away in case one of our crew shouts "Whales!" over the loudspeaker and you have to dash outside in a moment's notice. Opt for layers, as it is comfortably warm aboard the ship though often cold on deck.

How to pay

Refreshments and souvenirs will be charged to your cabin. The

day before departure you can settle your bill with the hotel manager, paying by credit card (Visa or MasterCard) or cash (euro, or in some cases dollar). We cannot, however, accept checks. Though the prices and standard currency on board is in the euro, other currencies may be accepted at the discretion of the hotel manager, at prevailing rates.

Electric current

The electrical supply aboard ship is 220v, 60Hz. Electrical outlets are standard European with two thick round pins, so some passengers may need a 220v/110v converter.

Gratuities

The customary gratuity to the ship's service personnel is made as a blanket contribution at the end of the voyage and is divided among the crew. Tipping is a personal matter, and the amount you wish to give is at your sole discretion. As a generally accepted guideline, we suggest 8 10 euros per passenger per day. It is better for the crew if you give cash.

Non-smoking policy

We have a non-smoking policy inside all our vessels, though you can smoke in certain designated areas. We ask that you please respect the wishes of non-smokers.

Your physical condition

You must be in good overall health and be able to walk several hours per day. The expedition is ship-based and physically not very demanding, but we spend as much time as possible on shore. You are, however, welcome to remain aboard the ship if you prefer. To join most excursions you must be able to get up and down the steep gangway from the ship to the water level to board the Zodiacs. Staff will assist you in and out of the boats, and boarding will become progressively easier with practice, but conditions on shore can be slippery and rocky. Remember, you will be traveling in remote areas without access



Wild Earth Travel

Small Ships, Big Adventures

wildearth-travel.com

info@wildearth-travel.com

to sophisticated medical facilities, so you must not join this expedition if you have a life-threatening condition or need daily medical treatment.



treatment.

Wild Earth Travel
Small Ships, Big Adventures

0800 945 3327 (within New Zealand) | +64 (0) 3 365 1355 | **1800 107 715** (within Australia)

info@wildearth-travel.com | **wildearth-travel.com**

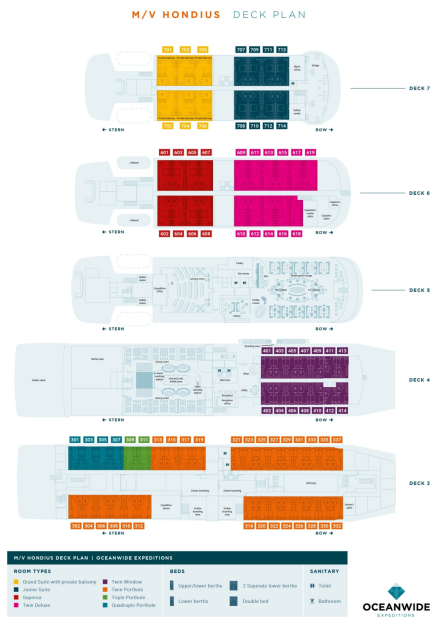


Wild Earth Travel
Small Ships, Big Adventures

wildearth-travel.com

info@wildearth-travel.com

INSIDE YOUR SHIP



Grand Suite with Private Balcony



Junior Suite



Quadruple Porthole



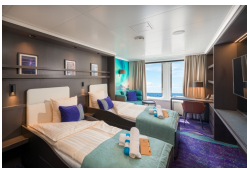
Superior



Triple Porthole



Twin Deluxe



Twin Porthole



Twin Window





Wild Earth Travel
Small Ships, Big Adventures

wildearth-travel.com **info@wildearth-travel.com**

PRICING

28-Aug-2026 to 06-Sep-2026

Quadruple Porthole	5900 USD pp
Triple Porthole	7250 USD pp
Twin Porthole	8500 USD pp
Twin Window	9200 USD pp
Twin Deluxe	9900 USD pp
Superior	11100 USD pp
Junior Suite	12650 USD pp
Grand Suite with Private Balcony	13700 USD pp

Wild Earth Travel
Small Ships, Big Adventures

0800 945 3327 (within New Zealand) | +64 (0) 3 365 1355 | **1800 107 715** (within Australia)

info@wildearth-travel.com | **wildearth-travel.com**