

# Wild Earth Travel

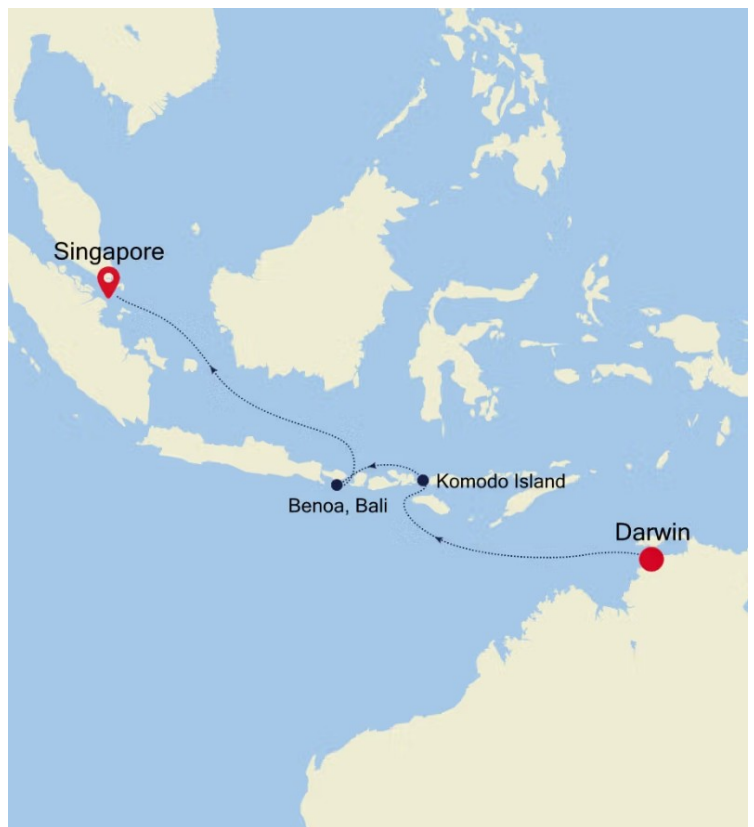
*Small Ships, Big Adventures*

**wildearth-travel.com**

**info@wildearth-travel.com**

## 9 DAYS LUXURY INDONESIA CRUISE - DARWIN TO SINGAPORE

Departing from Australia's tropical north, sail to reach a one-of-a-kind island where legendary Komodo Dragons tread across pristine sands. Indonesia's vibrant jewel, Bali, is next, with an overnight stay offering plenty of time to taste the riches, and experience soul-soothing culture and blissful beauty. Savour sea days - ideal for slowing the pace and revelling in the onboard luxury of the unparalleled Silver Nova - while heading for Singapore's glowing skyline.



### ITINERARY

#### Day 1 - Darwin

"Australia's capital of the north is a uniquely tropical city, and a historically isolated outpost of this vast, diverse country. Reaching up towards the equator, a full 2,000 miles from Sydney and Melbourne, the city was named in honour of Charles Darwin by the British settlers who established a frontier outpost here. With a unique history, beautiful islands nearby, and a palette of

Wild Earth Travel

*Small Ships, Big Adventures*

**0800 945 3327** (within New Zealand) | +64 (0) 3 365 1355 | **1800 107 715** (within Australia)

info@wildearth-travel.com | **wildearth-travel.com**



# Wild Earth Travel

*Small Ships, Big Adventures*

**wildearth-travel.com**

**info@wildearth-travel.com**

sizzling Pacific flavours, colourful Darwin is an enchanting and exotic Australian destination. Crocodiles patrol the jungled waterways and tropical rainforests around Australia's gateway to the Top End. Explore via airboat to look down on the veiny waterways of the mist-laced Kakadu National Park. The sounds of chattering birdlife and the gentle splash of fountains and waterfalls will fill your ears in George Brown Darwin Botanic Gardens. Soak it all in, before kicking back and relaxing with a picnic and a crackling barbecue. The sunshine and famous tropical pink sunsets mean many visitors naturally gravitate to the city's soft sands to relax at spots like pretty Mindil Beach, as evening approaches. The adjoining market is filled with souvenirs and crafts stands and is the perfect great place to enjoy some fiery Asian flavours. Stroll the stalls, grab some food, and crack open an ice-frosted beer as the sunset show begins. It may be remote, but Darwin found itself on the front line during the Pacific War, as the Japanese air force unloaded their bombs onto the city in 1942. This relaxed unassuming city has a deeply resilient backbone, however, and you can explore the museums to learn more of the war's impact on Darwin, as well as the devastating effects of one of Australia's worst natural disasters, Cyclone Tracy in 1973."

## Days 2 - 3 - Day at sea

Days at sea are the perfect opportunity to relax, unwind and catch up with what you've been meaning to do. So whether that is going to the gym, visiting the spa, whale watching, catching up on your reading or simply topping up your tan, these blue sea days are the perfect balance to busy days spent exploring shore side.

## Day 4 - Komodo Island

Komodo, the volcanic island of giant lizards, lies 320 miles (515 kilometres) east of Bali. Komodo is 25 miles (40 kilometres) long and 12 miles (19 kilometres) wide; its parched hills ascend to a height of 2,410 feet (734 metres). Komodo is home to a community of some 2000 people who make their living primarily from fishing. The island is the centrepiece of the Komodo National Park, where you will find the most tangible legacy left behind from the Jurassic Era. Komodo Island was little-known and the Komodo dragons were only a myth until the giant lizards were scientifically described in 1912. Extinct almost everywhere else, the island attracts thousands of visitors from all over the world who come to see the Komodo dragons in their natural habitat. Komodo National Park has been declared a UNESCO World Heritage Site and Biosphere Reserve. The Komodo dragon's great bulk and weight are its most unique characteristics; even hatchlings average 20 inches (51 centimetres) in

length. The adult male can reach 10 feet (3 metres) and weigh up to 330 pounds (150 kilos). Females attain only two-thirds of this size, and lay up to 30 eggs at a time. With their saw-like teeth, these fierce creatures are able to rip apart a deer, goat or wild pig. The animals have an uncanny sense of smell, and are considered among the world's most intelligent reptiles. They are quite agile over short distances, and can move swiftly to capture their prey. The Indonesian Directorate of Nature Conservation (PPA) administers Komodo National Park. Park Rangers must escort all visitors; independent exploration of the park is not permitted.

## Days 5 - 6 - Benoa, Bali

Bali. A.k.a. Island of the Gods, Land of a thousand temples or the World's last paradise. As superlative as these monikers may sound, they do not do justice to the actual reality of the island. Bali is as good as everyone says - verdant mountains with terraced rice fields in one direction, black sand beaches in another and captivating people that will leave even the most seasoned traveller humbled. If you're looking for a Garden of Eden that really does have it everything, Bali ticks all the boxes. The rich and diverse culture of the island is what sets Bali apart from Indonesia's (many) other tropical paradises. The country's estimated 10,000 Buddhist-Hindu temples, with their daily offerings of lotus flowers and fruit are testament to the gentleness of the islander's belief. Then there is the vibrant arts and crafts scene, notably in Ubud in the centre of the island, but prolific everywhere. Ideal souvenirs to bring back range from gorgeous silver jewellery to intricate wood carvings. Additionally, do try to see a traditional dance if possible, particularly if accompanied to local gamelan music. No one could mention Bali without mentioning the food. Dishes range from elaborate meals to street food bites, but all are without exception ambrosia. Do not miss out on tasting a succulent chicken satay, betutu (apparently the King's favourite meal) and sambal matah. But whatever you decide to discover, you can be assured of a taste sensation that will remain with you long after you have returned home.

## Days 7 - 8 - Day at sea

Days at sea are the perfect opportunity to relax, unwind and catch up with what you've been meaning to do. So whether that is going to the gym, visiting the spa, whale watching, catching up on your reading or simply topping up your tan, these blue sea days are the perfect balance to busy days spent exploring shore side.

**Wild Earth Travel**

*Small Ships, Big Adventures*

**0800 945 3327** (within New Zealand) | +64 (0) 3 365 1355 | **1800 107 715** (within Australia)

info@wildearth-travel.com | **wildearth-travel.com**



## Day 9 - Singapore

Advanced, airy and elevated, Singapore is a spectacular, futuristic vision of utopian city life. A healthy population of almost six million call it home, but this is a city designed with space to breathe, and gorgeous outdoor parks, massive indoor greenhouses and beautiful recreational spaces spread between the City of Gardens' skyscrapers and soaring structures. Once a quiet fishing village, now a glistening island city-state and an international beacon of science, education and technology. Singapore is almost intimidatingly clean - and the hyper-efficient public transport system whips residents and visitors across the city's neighbourhoods in a heartbeat. Glorious fountains and audacious skyscrapers loom up - nodding to traditional feng shui beliefs - and putting on dazzling illuminated displays after dark. The lush green botanical gardens are a spectacular UNESCO World Heritage Site, covering 52 hectares and decorated with impressive colourful orchids. Or breathe in more of the freshest air by heading up to wander the canopy strung bridges of MacRitchie Reservoir Park. Head for the iconic Marina Bay - a landmark of the city crowned by three interconnected towers, which watch out over island sprinkled waters. Jaunt between Little India and the atmospheric Chinatown in minutes, where beautiful temples - like the Chinese Tian Hock Keng Temple and Hindu Sri Mariamman Temple add rich cultural intrigue. Singapore's cuisine is a mouthwatering fusion of its Indian, Chinese, Indonesian, and Malay influences, taking and enhancing the best of each. Enjoy dishes in towering restaurants, or toast the glowing skyline with the city's eponymous gin-soaked cocktail - a Singapore Sling.

### Please note:

Itineraries are subject to change.





# Wild Earth Travel

*Small Ships, Big Adventures*

**wildearth-travel.com**

**info@wildearth-travel.com**

## YOUR SHIP: SILVER NOVA

<b>YOUR SHIP:</b>	<b>Silver Nova</b>
<b>VESSEL TYPE:</b>	<b>Luxury Cruise</b>
<b>LENGTH:</b>	<b>801 Feet / 244.2 Meters</b>
<b>PASSENGER CAPACITY:</b>	<b>728</b>
<b>BUILT/REFURBISHED:</b>	<b>2022/2023</b>

Silver Nova is more than a new ship by Silversea, it is a Nova way of luxury travel.

Introducing Silver Nova - the twelfth ship to join our fleet. Our newest vessel will join us in summer 2023, and will be a home away from home for up to 728 guests. Silver Nova's innovative asymmetrical design introduces the world like never before, offering an immersive destination experience to our guests. With a gross tonnage of 54,700 tons she will offer a space-to-guest ratio of 75 GRT-per-passenger becoming one of the most spacious cruise ships ever built. What's more, Silver Nova will be our most environmentally friendly, and thanks to her groundbreaking technological solutions, she will propel Silversea into a new era of sustainable cruising. It's the Nova way to travel.

**S.A.L.T. Chef's Table** - An intimate dining experience with a curated tasting menu highlighting regional flavors. Includes wine & cocktail pairing. Reservation fee: \$180.

**S.A.L.T. Kitchen** - Destination-inspired menus featuring local flavors. The Terrain menu showcases the current port, while the Voyage menu offers highlights from the journey.

**Atlantide** - Classic fine dining with a sophisticated ambiance.

Indulge in premium ingredients like caviar, lobster, and exquisite desserts.

**La Terrazza** - Authentic Italian cuisine with homemade pasta, antipasto, risotto, and bold regional wines. Enjoy stunning views from the outdoor terrace.

**La Dame** - French fine dining with curated tasting menus and wine pairings. Reservation fee: \$160.

**Kaiseki** - Japanese culinary artistry with sake, whiskey, or tea pairings. Reservation fee: \$80.

**Silver Note** - A lively venue with gourmet tapas, jazz, and soul music, perfect for a night of entertainment.

**The Grill** - Casual dining by day, transforming into the "Hot Rocks" BBQ experience at night, set in The Marquee.

**Spaccanapoli** - Thin, freshly made pizzas from Naples, served in an open-air setting at The Marquee.

**The Pool Deck** - Spacious sun deck with Silversea's largest pool and an infinity-edge whirlpool for ultimate relaxation.

**The Dusk Bar** - Open-air sky bar offering panoramic views and destination-inspired cocktails.

**The Marquee** - A relaxed outdoor venue combining The Grill and Spaccanapoli for casual dining.

**Arts Cafe** - A cultural hub for light bites, fresh juices, coffee, and artistic inspiration.

**S.A.L.T. Bar** - Locally inspired cocktails reflecting each destination.

**S.A.L.T. Lab** - Hands-on culinary workshops exploring local food culture.

**The Shelter** - An elegant cocktail bar offering signature drinks in an intimate setting.

Wild Earth Travel

*Small Ships, Big Adventures*

**0800 945 3327** (within New Zealand) | +64 (0) 3 365 1355 | **1800 107 715** (within Australia)

info@wildearth-travel.com | wildearth-travel.com



# Wild Earth Travel

*Small Ships, Big Adventures*

**wildearth-travel.com**

**info@wildearth-travel.com**

Dolce Vita - The ship's social hub, featuring live piano music and expertly crafted cocktails.

Panorama Lounge - A versatile space for relaxing by day and live music or DJ sets at night.

Connoisseur 's Corner - A stylish cigar lounge with premium selections.

Observation Lounge - A peaceful retreat with panoramic sea views and an in-house library.

The Venetian Lounge - A grand theatre for live performances and film screenings.

Atrium - The heart of the ship, home to key services, The Shelter, and Arts Cafe, with stunning floor-to-ceiling windows.

Boutique - Luxury shopping at sea, featuring premium brands and exclusive collections.



ollections.

Wild Earth Travel

*Small Ships, Big Adventures*

**0800 945 3327** (within New Zealand) | +64 (0) 3 365 1355 | **1800 107 715** (within Australia)

info@wildearth-travel.com | **wildearth-travel.com**



# Wild Earth Travel

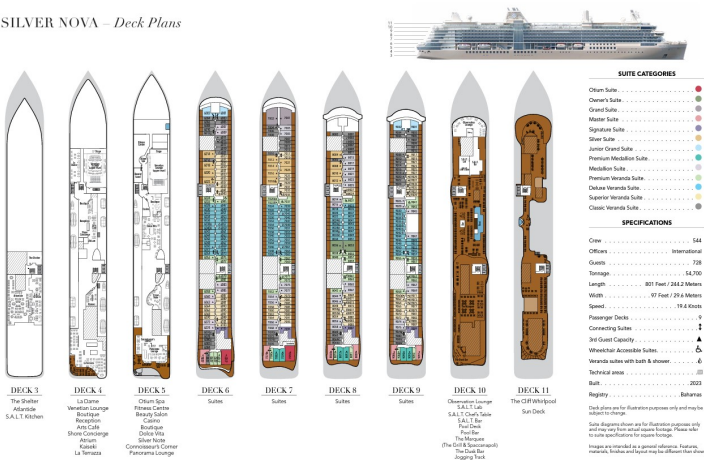
*Small Ships, Big Adventures*

[wildearth-travel.com](http://wildearth-travel.com)

[info@wildearth-travel.com](mailto:info@wildearth-travel.com)

## INSIDE YOUR SHIP

SILVER NOVA – Deck Plans



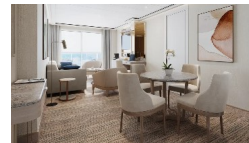
### Classic Veranda



### Grand 1 Bedroom



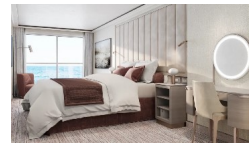
### Junior Grand 2 Bedroom



### Medallion



### Owner 1 Bedroom



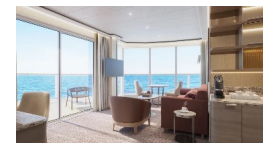
### Deluxe Veranda



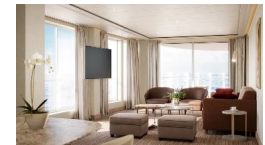
### Junior Grand 1 Bedroom



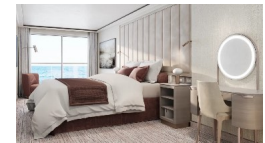
### Master



### Otium



### Owner 2 Bedroom



Wild Earth Travel

*Small Ships, Big Adventures*

0800 945 3327 (within New Zealand) | +64 (0) 3 365 1355 | 1800 107 715 (within Australia)

[info@wildearth-travel.com](mailto:info@wildearth-travel.com) | [wildearth-travel.com](http://wildearth-travel.com)



# Wild Earth Travel

*Small Ships, Big Adventures*

**wildearth-travel.com**

**info@wildearth-travel.com**

## PRICING

04-Feb-2026 to 12-Feb-2026

Classic Veranda	8500 AUD pp
Superior Veranda	8700 AUD pp
Deluxe Veranda	9000 AUD pp
Premium Veranda	9400 AUD pp
Medallion	10800 AUD pp
Premium Medallion	11900 AUD pp
Junior Grand 1 Bedroom	12600 AUD pp
Silver	13400 AUD pp
Signature	17100 AUD pp
Master	17900 AUD pp
Grand 1 Bedroom	18100 AUD pp
Junior Grand 2 Bedroom	20300 AUD pp
Owner 1 Bedroom	22500 AUD pp
Otium	24800 AUD pp
Owner 2 Bedroom	31000 AUD pp

Wild Earth Travel  
*Small Ships, Big Adventures*

**0800 945 3327** (within New Zealand) | +64 (0) 3 365 1355 | **1800 107 715** (within Australia)

info@wildearth-travel.com | **wildearth-travel.com**