

Wild Earth Travel

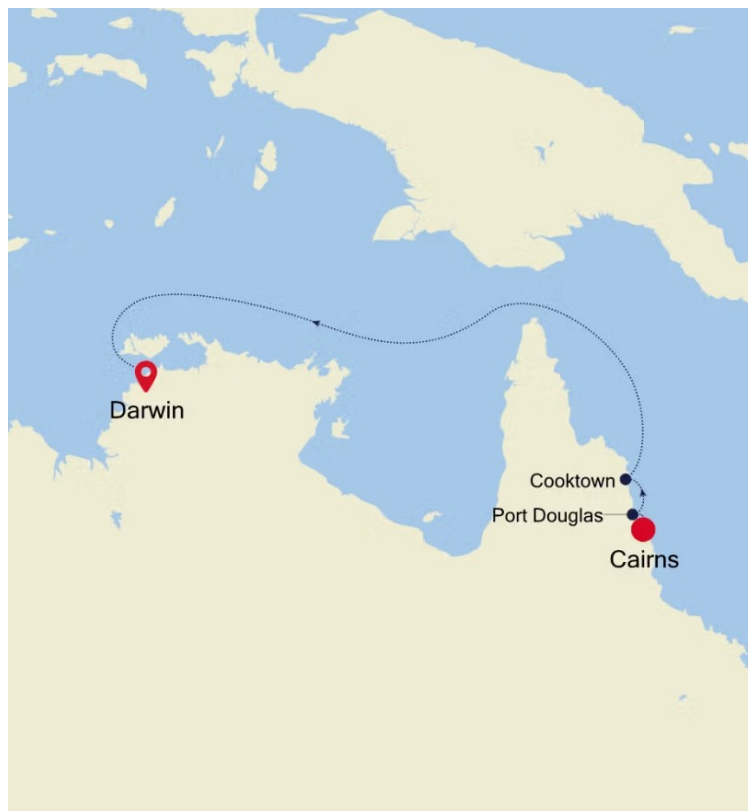
Small Ships, Big Adventures

wildearth-travel.com

info@wildearth-travel.com

9 DAYS LUXURY AUSTRALIA CRUISE - CAIRNS TO DARWIN

Starting from laid-back Cairns - the stunning gateway to some of the world's best snorkelling in the Great Barrier Reef - this voyage immediately immerses you in Australia's unmatched coastal glory. Discover Aboriginal heritage amid lush rainforest canopy, encounter Queensland's crocodiles, and wander the wide beaches of Port Douglas. Three indulgent sea days are perfect for soaking up the tropical sunshine en route to Darwin, the capital of the Northern Territory.



ITINERARY

Days 1 - 2 - Cairns

Warmly welcoming you to the natural wonders of the Great Barrier Reef, Cairns is a treasure trove of rich tropical beauty and incredible sea life. Swathes of rainforest spread out to the north, where you can soar over the canopy in a cable car, before looking down over narrow channels of water plummeting down gorges and crocodile-filled waterways. The diverse lands of the Atherton Tableland lie to the west, but it's the crystal-clear waters - and life-filled reefs -

Wild Earth Travel

Small Ships, Big Adventures

0800 945 3327 (within New Zealand) | +64 (0) 3 365 1355 | **1800 107 715** (within Australia)

info@wildearth-travel.com | **wildearth-travel.com**



Wild Earth Travel

Small Ships, Big Adventures

wildearth-travel.com

info@wildearth-travel.com

of Cairns' remarkable underwater world that draws universal adulation. Priding itself as the Gateway to the Great Barrier Reef, explore Cairns' constellation of colour, as you dive into the world's largest and most spectacular underwater universe. Cairns is huddled in amongst abundant swathes of rainforests, which give way to glorious crescents of golden beach. Kuranda - with its scenic railway and heritage market stalls - waits to be discovered, cloaked within the depths of the rainforest. Learn of the indigenous people of North Queensland during cultural performances, and hear the throaty reverberations of digeridoos, as you hear eternal stories handed down through time, from generation to generation. Back in Cairns, there's always time for a coffee or a beer, or a feast on fresh oysters with glasses of Cairns' white wines - boldly flavoured with mango and banana notes.

Day 3 - Port Douglas

To reach Port Douglas is to reach the seductive, stunning heart of tropical North Queensland and its unparalleled natural treasures. Spreading out leisurely along the sparkling coral sea, in-vogue Port Douglas is an in-demand escape, which casually balances indulgence with exhilaration. Enjoying a truly privileged position, the town is cushioned by thick rainforest flowing down to coral-covered seas. Adventures among the Great Barrier Reef and Daintree Rainforest understandably take the headlines, but there is also culinary splendour to explore. Wander the shaded Macrossan Street beneath towering green palm trees and rich blue sky, while scouting out a bite to eat. The marina bustles with markets, crafty boutiques and sleek vessels, taking wide-eyed divers on the quick journey to the glittering underwater universe of the world's most spectacular barrier reef. Nearby, the unspoiled Four Mile Beach is every bit as ample as its name suggests. Enjoy a glorious bend of golden sand, lapped by dreamy blue waters. The ancient Daintree rainforest is the oldest on the planet, and Sir David Attenborough's 'most extraordinary place on earth'. You'll soon see why it receives such acclaim. Creeks bustle with saltwater crocodiles, gorges surge through thick canopy, and flightless birds like the Southern Cassowary add to an immense tapestry of unique animal life. There is human heritage to unravel too, and the Kuku Yalanji people share their culture and ancient knowledge of these most extraordinary lands.

Day 4 - Cooktown

Cooktown is located on the remote, unspoilt beauty of the Cape York Peninsula is nestled between the mouth of the Endeavour River and Grassy Hill - the location of the first recorded sighting of kangaroos by Europeans. With Mt

Cook as a backdrop, Cooktown is a charming, historical town, unspoilt by the urgency of modern life. Cooktown is known for its well documented history, Captain Cook's arrival on the banks of the Endeavour River in 1770 after he ran aground on some reefs off the coast led to his first recorded meaningful contact and reconciliation with Aboriginal people. Cook climbed Grassy Hill to work out a safe passage for the Endeavour to sail through the surrounding reefs, after it was repaired. Later Cooktown became a bustling port, exporting gold from the Palmer River Goldfields. Discover this unique history and Cooktown's colourful past on a stroll around town or use it as a gateway up the Peninsula to experience the raw beauty of one of Australia's last true frontiers.

Days 5 - 7 - Day at sea

Days at sea are the perfect opportunity to relax, unwind and catch up with what you've been meaning to do. So whether that is going to the gym, visiting the spa, whale watching, catching up on your reading or simply topping up your tan, these blue sea days are the perfect balance to busy days spent exploring shore side.

Days 8 - 9 - Darwin

"Australia's capital of the north is a uniquely tropical city, and a historically isolated outpost of this vast, diverse country. Reaching up towards the equator, a full 2,000 miles from Sydney and Melbourne, the city was named in honour of Charles Darwin by the British settlers who established a frontier outpost here. With a unique history, beautiful islands nearby, and a palette of sizzling Pacific flavours, colourful Darwin is an enchanting and exotic Australian destination. Crocodiles patrol the jungled waterways and tropical rainforests around Australia's gateway to the Top End. Explore via airboat to look down on the veiny waterways of the mist-laced Kakadu National Park. The sounds of chattering birdlife and the gentle splash of fountains and waterfalls will fill your ears in George Brown Darwin Botanic Gardens. Soak it all in, before kicking back and relaxing with a picnic and a crackling barbecue. The sunshine and famous tropical pink sunsets mean many visitors naturally gravitate to the city's soft sands to relax at spots like pretty Mindil Beach, as evening approaches. The adjoining market is filled with souvenirs and crafts stands and is the perfect great place to enjoy some fiery Asian flavours. Stroll the stalls, grab some food, and crack open an ice-frosted beer as the sunset show begins. It may be remote, but Darwin found itself on the front line during the Pacific War, as the Japanese air force unloaded their bombs onto the city in 1942. This relaxed unassuming city has a deeply resilient backbone, however, and you can explore the museums to learn more of the war's impact on



Darwin, as well as the devastating effects of one of Australia's worst natural disasters, Cyclone Tracy in 1973."

Please note:

Itineraries are subject to change.



0800 945 3327 (within New Zealand) | +64 (0) 3 365 1355 | **1800 107 715** (within Australia)

info@wildearth-travel.com | wildearth-travel.com

Wild Earth Travel

Small Ships, Big Adventures

wildearth-travel.com

info@wildearth-travel.com

YOUR SHIP: SILVER NOVA

YOUR SHIP:	Silver Nova
VESSEL TYPE:	Luxury Cruise
LENGTH:	801 Feet / 244.2 Meters
PASSENGER CAPACITY:	728
BUILT/REFURBISHED:	2022/2023

Silver Nova is more than a new ship by Silversea, it is a Nova way of luxury travel.

Introducing Silver Nova - the twelfth ship to join our fleet. Our newest vessel will join us in summer 2023, and will be a home away from home for up to 728 guests. Silver Nova's innovative asymmetrical design introduces the world like never before, offering an immersive destination experience to our guests. With a gross tonnage of 54,700 tons she will offer a space-to-guest ratio of 75 GRT-per-passenger becoming one of the most spacious cruise ships ever built. What's more, Silver Nova will be our most environmentally friendly, and thanks to her groundbreaking technological solutions, she will propel Silversea into a new era of sustainable cruising. It's the Nova way to travel.

S.A.L.T. Chef's Table - An intimate dining experience with a curated tasting menu highlighting regional flavors. Includes wine & cocktail pairing. Reservation fee: \$180.

S.A.L.T. Kitchen - Destination-inspired menus featuring local flavors. The Terrain menu showcases the current port, while the Voyage menu offers highlights from the journey.

Atlantide - Classic fine dining with a sophisticated ambiance.

Indulge in premium ingredients like caviar, lobster, and exquisite desserts.

La Terrazza - Authentic Italian cuisine with homemade pasta, antipasto, risotto, and bold regional wines. Enjoy stunning views from the outdoor terrace.

La Dame - French fine dining with curated tasting menus and wine pairings. Reservation fee: \$160.

Kaiseki - Japanese culinary artistry with sake, whiskey, or tea pairings. Reservation fee: \$80.

Silver Note - A lively venue with gourmet tapas, jazz, and soul music, perfect for a night of entertainment.

The Grill - Casual dining by day, transforming into the "Hot Rocks" BBQ experience at night, set in The Marquee.

Spaccanapoli - Thin, freshly made pizzas from Naples, served in an open-air setting at The Marquee.

The Pool Deck - Spacious sun deck with Silversea's largest pool and an infinity-edge whirlpool for ultimate relaxation.

The Dusk Bar - Open-air sky bar offering panoramic views and destination-inspired cocktails.

The Marquee - A relaxed outdoor venue combining The Grill and Spaccanapoli for casual dining.

Arts Cafe - A cultural hub for light bites, fresh juices, coffee, and artistic inspiration.

S.A.L.T. Bar - Locally inspired cocktails reflecting each destination.

S.A.L.T. Lab - Hands-on culinary workshops exploring local food culture.

The Shelter - An elegant cocktail bar offering signature drinks in an intimate setting.

Wild Earth Travel

Small Ships, Big Adventures

wildearth-travel.com

info@wildearth-travel.com

Dolce Vita - The ship's social hub, featuring live piano music and expertly crafted cocktails.

Panorama Lounge - A versatile space for relaxing by day and live music or DJ sets at night.

Connoisseur 's Corner - A stylish cigar lounge with premium selections.

Observation Lounge - A peaceful retreat with panoramic sea views and an in-house library.

The Venetian Lounge - A grand theatre for live performances and film screenings.

Atrium - The heart of the ship, home to key services, The Shelter, and Arts Cafe, with stunning floor-to-ceiling windows.

Boutique - Luxury shopping at sea, featuring premium brands and exclusive collections.



ollections.

Wild Earth Travel

Small Ships, Big Adventures

0800 945 3327 (within New Zealand) | +64 (0) 3 365 1355 | **1800 107 715** (within Australia)

info@wildearth-travel.com | **wildearth-travel.com**

Wild Earth Travel

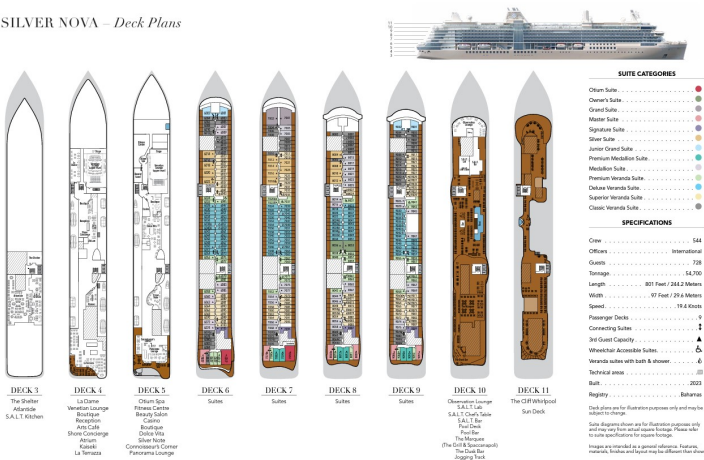
Small Ships, Big Adventures

wildearth-travel.com

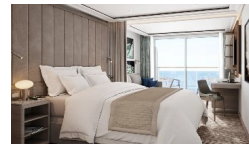
info@wildearth-travel.com

INSIDE YOUR SHIP

SILVER NOVA – Deck Plans



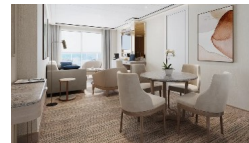
Classic Veranda



Grand 1 Bedroom



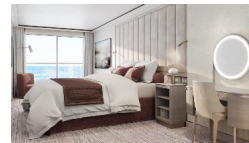
Junior Grand 2 Bedroom



Medallion



Owner 1 Bedroom



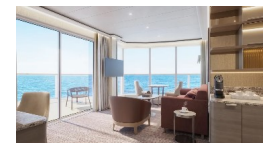
Deluxe Veranda



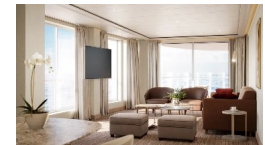
Junior Grand 1 Bedroom



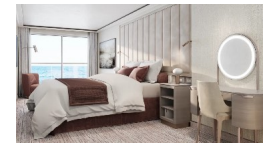
Master



Otium



Owner 2 Bedroom



Wild Earth Travel

Small Ships, Big Adventures

0800 945 3327 (within New Zealand) | +64 (0) 3 365 1355 | 1800 107 715 (within Australia)

info@wildearth-travel.com | wildearth-travel.com

Wild Earth Travel

Small Ships, Big Adventures

wildearth-travel.com

info@wildearth-travel.com

PRICING

28-Oct-2025 to 05-Nov-2025

Classic Veranda	9600 AUD pp
Superior Veranda	10000 AUD pp
Deluxe Veranda	10600 AUD pp
Premium Veranda	11000 AUD pp
Medallion	16800 AUD pp
Premium Medallion	18700 AUD pp
Junior Grand 1 Bedroom	19800 AUD pp
Silver	21100 AUD pp
Signature	27100 AUD pp
Master	28400 AUD pp
Grand 1 Bedroom	29400 AUD pp
Owner 1 Bedroom	36600 AUD pp
Junior Grand 2 Bedroom	28500 AUD pp
Otium	40200 AUD pp
Owner 2 Bedroom	46500 AUD pp