

Wild Earth Travel

Small Ships, Big Adventures

wildearth-travel.com

info@wildearth-travel.com

9 DAYS LUXURY ANTARCTICA EXPEDITION - KING GEORGE ISLAND TO KING GEORGE ISLAND

Set sail for the world's most coveted destination. This voyage sees you fly in to the heart of the South Shetland Islands, aka the gateway to Antarctica. Board Silver Cloud directly from King George Island, and begin your Antarctic adventure straight away. Weave through towering icebergs, enjoy snowy hikes and set your cameras ready for abundant and spectacular wildlife and breathtaking scenery. We promise this singular journey will take you from tourist to traveller in just 7-days.



ITINERARY

Days 0 - 1 - Pre Cruise & King George Island

- ****Pre Cruise Benefits**** —
- ****Private Executive Transfers**** —
- ****International flights - Economy class**** —
- ****or Business Class upgrade**** —
- ****In-country flights/Group flights**** —
- ****Hotel**** —

As the largest of all the South Shetland Islands, King George is considered the gateway to Antarctica. At just 120 kilometres from the Antarctic Peninsula and the only airport in the South Shetlands, it is the connection between "real life" and "Antarctic life". More than 10 different nations have year-round or

Wild Earth Travel

Small Ships, Big Adventures

0800 945 3327 (within New Zealand) | +64 (0) 3 365 1355 | **1800 107 715** (within Australia)

info@wildearth-travel.com | **wildearth-travel.com**

Wild Earth Travel

Small Ships, Big Adventures

wildearth-travel.com

info@wildearth-travel.com

summer-only scientific research stations on the island (considering that 90% of the island is covered by snow and ice, that is quite an achievement!). Maintaining a base on the island allows membership of the Antarctic Treaty. There is even a Russian Orthodox church, with a permanent on-site priest. The island might be home to a few international scientists, but they are very much outnumbered by the diverse wildlife that considers King George Island rightfully theirs. Adelie, Chinstrap and Gentoo Penguins all commute to and from the Antarctic peninsula from the island, while Weddell and leopard seals are regular visitors and can be spotted either in the water or on the shore. Naturally, this brings a huge amount of birdlife: skuas and southern giant petrels are regular summer residents, attracted by the warm climate (warm being a relative term, average temperature is between 1.5 and -6.5°C). The island was named after King George III after British explorer discovered it in 1819. Since then the island has been claimed by both Chile (1940) and Argentina (1943), but remains part of British Antarctic Territory.

Day 2 - Antarctic Sound

Few voyages ignite the imagination like a journey down to one of the planet's most remote, extreme and enchanting wilderness, Antarctica. An adventure in its purest form, only a handful of people will ever be lucky enough to experience the majestic beauty of these monochrome landscapes first-hand. The Antarctic Sound will be one of your first encounters of this whitewash kingdom, located at the northerly tip of the Antarctic Peninsula - which sprawls up like a tentacle towards Tierra del Fuego, South America's most southerly point, otherwise known as the 'End of the World'. Taking its name from the first ship to brave the passageway between the peninsular and the Joinville Island groups back in 1902, the Sound is a raw, sensory assault of imposing iceberg slabs, broken away from the disintegrating Larsen Ice Shelf. Come face-to-face with stadium-sized islands of ice and meet the extraordinary birdlife that call this whitewash kingdom home. Watch on, as colonies of Gentoo penguins hop around, and cape petrels sweep overhead, as the continent's unique wildlife thrives around you. If you're planning your first venture into Antarctica, you'll want to brush up on your photography skills in advance, to capture this unforgiving continent in all of its unrestrained glory. Read our blog for tips on how to ensure that your photos do justice to the adventure of a lifetime.

Days 3 - 5 - Antarctic Peninsula

The Antarctic Peninsula unravels upwards towards South America, reaching out a beckoning finger to the adventurous, who dare to explore this untamed realm. Stretching up from the heart of the world's southernmost continent, the

Antarctic Peninsula lies a mere 620 mile from Tierra del Fuego and, for many, offers a spectacular first taste of the snow-blanketed landscapes and colossal ice sculptures, which make up Earth's least-explored continent. Unseen by humans until 1820 - a blink of an eye ago in relative terms - this is an adventure sure to make your hairs stand on end, as you experience the thrill of the truly unknown and extraordinary. The vast peninsula is sprinkled with research bases, which are at the frontline of human scientific endeavour, pushing to study and understand this unique landscape, its exceptional wildlife, and the impact that humans are having on this pristine continent. Witness cathedral-sized icebergs up close, and blue-hued glaciers, slowly slipping from imposing locations like Hope Bay. Blanched mountain peaks cover the peninsula, and you'll find thousands of adorable Adelie penguin pairs thriving undisturbed in this peninsula's unique setting.

Day 6 - South Shetland Islands

The ice-coated Antarctic Peninsula forms perhaps the most accessible region of mainland Antarctica, lying a mere 480-miles away from South America, across the fabled waters of Drakes Passage. Lying close to the northwestern tip of the Antarctic Peninsula, separated by the Bransfield Strait, the South Shetland Islands fall under the jurisdiction of the Antarctic Treaty, suspending claims on their sovereignty. Several countries maintain research bases here, and with plump elephant seals, and crowds of Gentoo, Chinstrap and Adelie Penguins also calling the islands home, it can even feel a little crowded at times. King George Island is the largest and most hospitable island, hosting the majority of the research stations - some of which are populated all-year-round by tiny, hardy crews. Don't be fooled though, these islands offer extraordinary adventure in one of the most remote locations on earth. The triple peaks of Mount Foster tower above the archipelago, and you'll feel your heart pumping a little quicker, as you sail into the core of Deception Island's magnificent collapsed volcano caldera. Hike the luna landscapes within, and even dip into the improbably warm, geothermally-heated waters of Pendulum Cove. Elephant Island, meanwhile, is written deep into the annals of Antarctic expedition legend, as the site where Ernest Shackleton and the stricken crew of the Endurance miraculously survived a harsh Antarctic winter, in 1916.

Day 7 - King George Island

As the largest of all the South Shetland Island, King George is considered the gateway to Antarctica. At just 120 kilometres from the Antarctic Peninsula and the only airport in the South Shetlands, it is the connection between "real life" and "Antarctic life". More than 10 different nations have year-round or

Wild Earth Travel

Small Ships, Big Adventures

0800 945 3327 (within New Zealand) | +64 (0) 3 365 1355 | **1800 107 715** (within Australia)

info@wildearth-travel.com | wildearth-travel.com

Wild Earth Travel

Small Ships, Big Adventures

wildearth-travel.com

info@wildearth-travel.com

summer-only scientific research stations on the island (considering that 90% of the island is covered by snow and ice, that is quite an achievement!). Maintaining a base on the island allows membership of the Antarctic Treaty. There is even a Russian Orthodox church, with a permanent on-site priest. The island might be home to a few international scientists, but they are very much outnumbered by the diverse wildlife that considers King George Island rightfully theirs. Adelie, Chinstrap and Gentoo Penguins all commute to and from the Antarctic peninsula from the island, while Weddell and leopard seals are regular visitors and can be spotted either in the water or on the shore. Naturally, this brings a huge amount of birdlife: skuas and southern giant petrels are regular summer residents, attracted by the warm climate (warm being a relative term, average temperature is between 1.5 and -6.5°C). The island was named after King George III after British explorer discovered it in 1819. Since then the island has been claimed by both Chile (1940) and Argentina (1943), but remains part of British Antarctic Territory.

Day 8 - Post Cruise

- _ ****Post Cruise Benefits**** _
- _ ****Hotel**** _
- _ ****In-country flights/Group flights**** _
- _ ****International flights - Economy class**** _
- _ ****or Business Class upgrade**** _
- _ ****Private Executive Transfers**** _

Please note:

Itineraries are subject to change.

Wild Earth Travel

Small Ships, Big Adventures

wildearth-travel.com

info@wildearth-travel.com

YOUR SHIP: SILVER CLOUD

YOUR SHIP:	Silver Cloud
VESSEL TYPE:	Luxury Expedition
LENGTH:	157 m
PASSENGER CAPACITY:	200/260
BUILT/REFURBISHED:	1994 Refurbished & Rebranded

After extensive refurbishment, _Silver Cloud_ will be the most spacious and comfortable ice class vessel in expedition cruising. Her large suites, her destination itineraries and her unparalleled service make her truly special. Her five dining options will tantalise your taste buds and as 80% of her suites include a veranda, watching a breaching whale or a few cavorting penguins has never been so personal. Broad sweeping decks with multiple open spaces and a swimming pool complete what is surely the most distinctive expedition ship sailing today.

A limited number of guests, particularly with just 200 in polar waters, mean that _Silver Cloud_ has the highest space to guest and crew to guest ratios in expedition cruising. With her 18 zodiacs, possibilities are almost limitless with ship-wide simultaneous explorations. Finally, a team of 19 passionate and dedicated experts are always at hand to ensure your voyage is enhanced every step of the way.

DECK 09 - Observation Lounge, Jogging Track

DECK 08 - Pool, Pool Bar, Hot Rocks, The Panorama Lounge, The Connoisseur's Corner

DECK 07 - La Terrazza, The Spa at Silversea, Beauty Salon, The Library

DECK 06 - Lecture Theatre, The Fitness Centre, Reception/Guest Relations, Expedition Desk

DECK 05 - The Bar, Boutique, Casino

DECK 04 - Main Restaurant, Le Champagne, Launderette



Launderette

Wild Earth Travel

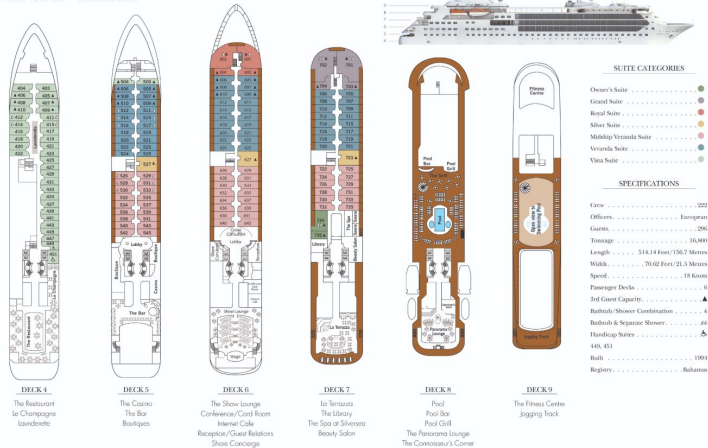
Small Ships, Big Adventures

wildearth-travel.com

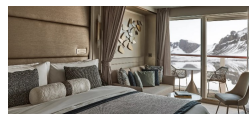
info@wildearth-travel.com

INSIDE YOUR SHIP

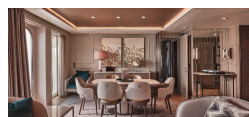
Silver Cloud - DECK PLAN



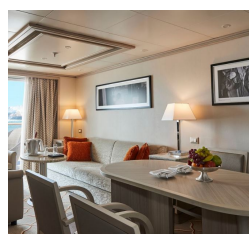
Classic Veranda



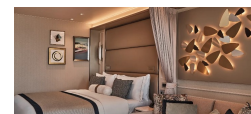
Grand 1 Bedroom



Medallion



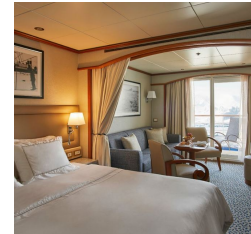
Deluxe Veranda



Grand 2 Bedroom



Midship Veranda



Wild Earth Travel

Small Ships, Big Adventures

0800 945 3327 (within New Zealand) | +64 (0) 3 365 1355 | 1800 107 715 (within Australia)

info@wildearth-travel.com | wildearth-travel.com

Wild Earth Travel

Small Ships, Big Adventures

wildearth-travel.com

info@wildearth-travel.com

PRICING

24-Oct-2025 to 01-Nov-2025

Classic Veranda	27500 AUD pp
Superior Veranda	28000 AUD pp
Deluxe Veranda	29300 AUD pp
Premium Veranda	29900 AUD pp
Silver	47400 AUD pp
Grand 1 Bedroom	90200 AUD pp
Owner 1 Bedroom	120700 AUD pp

11-Nov-2025 to 19-Nov-2025

Classic Veranda	29500 AUD pp
Superior Veranda	32100 AUD pp
Deluxe Veranda	33400 AUD pp
Premium Veranda	34200 AUD pp
Silver	52300 AUD pp
Grand 1 Bedroom	95100 AUD pp
Owner 1 Bedroom	125600 AUD pp

30-Oct-2025 to 07-Nov-2025

Classic Veranda	27600 AUD pp
Superior Veranda	30200 AUD pp
Deluxe Veranda	31500 AUD pp
Premium Veranda	32100 AUD pp
Silver	49600 AUD pp
Grand 1 Bedroom	92500 AUD pp
Owner 1 Bedroom	122900 AUD pp

05-Nov-2025 to 13-Nov-2025

Classic Veranda	29500 AUD pp
Superior Veranda	32100 AUD pp
Deluxe Veranda	33400 AUD pp
Premium Veranda	34200 AUD pp
Silver	52300 AUD pp
Grand 1 Bedroom	95100 AUD pp
Owner 1 Bedroom	125600 AUD pp

Wild Earth Travel

Small Ships, Big Adventures

wildearth-travel.com

info@wildearth-travel.com

PRICING

06-Jan-2026 to 14-Jan-2026

Vista	28500 AUD pp
Veranda	32600 AUD pp
Midship Veranda	34600 AUD pp
Medallion	41900 AUD pp
Silver	47300 AUD pp
Royal 1 Bedroom	52000 AUD pp
Grand 1 Bedroom	57100 AUD pp
Owner 1 Bedroom	62700 AUD pp
Royal 2 Bedroom	81300 AUD pp
Grand 2 Bedroom	86400 AUD pp
Owner 2 Bedroom	88400 AUD pp

Vista	28500 AUD pp
Veranda	32600 AUD pp
Midship Veranda	34600 AUD pp
Medallion	41900 AUD pp
Silver	47300 AUD pp
Royal 1 Bedroom	52000 AUD pp
Grand 1 Bedroom	57100 AUD pp
Owner 1 Bedroom	62700 AUD pp
Royal 2 Bedroom	81300 AUD pp
Grand 2 Bedroom	86400 AUD pp
Owner 2 Bedroom	88400 AUD pp

09-Jan-2026 to 17-Jan-2026

Vista	28400 AUD pp
Medallion	42700 AUD pp
Silver	46900 AUD pp
Royal 1 Bedroom	51500 AUD pp
Grand 1 Bedroom	56600 AUD pp
Owner 1 Bedroom	62200 AUD pp
Royal 2 Bedroom	80700 AUD pp
Grand 2 Bedroom	85800 AUD pp
Owner 2 Bedroom	87800 AUD pp
Veranda	0 pp
Midship Veranda	0 pp

12-Jan-2026 to 20-Jan-2026



0800 945 3327 (within New Zealand) | +64 (0) 3 365 1355 | **1800 107 715** (within Australia)

info@wildearth-travel.com | wildearth-travel.com

Wild Earth Travel

Small Ships, Big Adventures

wildearth-travel.com

info@wildearth-travel.com

PRICING

15-Jan-2026 to 23-Jan-2026

Vista	28400 AUD pp
Medallion	42700 AUD pp
Silver	46900 AUD pp
Royal 1 Bedroom	51500 AUD pp
Grand 1 Bedroom	56600 AUD pp
Owner 1 Bedroom	62200 AUD pp
Royal 2 Bedroom	80700 AUD pp
Grand 2 Bedroom	85800 AUD pp
Owner 2 Bedroom	87800 AUD pp
Midship Veranda	0 pp
Veranda	0 pp

Vista	28400 AUD pp
Medallion	42700 AUD pp
Silver	46900 AUD pp
Royal 1 Bedroom	51500 AUD pp
Grand 1 Bedroom	56600 AUD pp
Owner 1 Bedroom	62200 AUD pp
Royal 2 Bedroom	80700 AUD pp
Grand 2 Bedroom	85800 AUD pp
Owner 2 Bedroom	87800 AUD pp
Veranda	0 pp
Midship Veranda	0 pp

18-Jan-2026 to 26-Jan-2026

Vista	28500 AUD pp
Veranda	32600 AUD pp
Midship Veranda	34600 AUD pp
Medallion	41900 AUD pp
Silver	47300 AUD pp
Royal 1 Bedroom	52000 AUD pp
Grand 1 Bedroom	57100 AUD pp
Owner 1 Bedroom	62700 AUD pp
Royal 2 Bedroom	81300 AUD pp
Grand 2 Bedroom	86400 AUD pp
Owner 2 Bedroom	88400 AUD pp

21-Jan-2026 to 29-Jan-2026



0800 945 3327 (within New Zealand) | +64 (0) 3 365 1355 | **1800 107 715** (within Australia)

info@wildearth-travel.com | wildearth-travel.com

Wild Earth Travel

Small Ships, Big Adventures

wildearth-travel.com

info@wildearth-travel.com

PRICING

24-Jan-2026 to 01-Feb-2026

Vista	28700 AUD pp
Veranda	32400 AUD pp
Midship Veranda	34400 AUD pp
Medallion	41400 AUD pp
Silver	52100 AUD pp
Royal 1 Bedroom	57200 AUD pp
Grand 1 Bedroom	62800 AUD pp
Owner 1 Bedroom	69000 AUD pp
Royal 2 Bedroom	86400 AUD pp
Owner 2 Bedroom	98300 AUD pp
Grand 2 Bedroom	92000 AUD pp

Vista	28500 AUD pp
Veranda	32600 AUD pp
Midship Veranda	34600 AUD pp
Medallion	41900 AUD pp
Silver	47300 AUD pp
Royal 1 Bedroom	52000 AUD pp
Grand 1 Bedroom	57100 AUD pp
Owner 1 Bedroom	62700 AUD pp
Royal 2 Bedroom	81300 AUD pp
Grand 2 Bedroom	86400 AUD pp
Owner 2 Bedroom	88400 AUD pp

27-Jan-2026 to 04-Feb-2026

Vista	28400 AUD pp
Medallion	42700 AUD pp
Silver	46900 AUD pp
Royal 1 Bedroom	51500 AUD pp
Grand 1 Bedroom	56600 AUD pp
Owner 1 Bedroom	62200 AUD pp
Royal 2 Bedroom	80700 AUD pp
Grand 2 Bedroom	85800 AUD pp
Owner 2 Bedroom	87800 AUD pp
Midship Veranda	0 pp
Veranda	0 pp

05-Feb-2026 to 13-Feb-2026

Wild Earth Travel
Small Ships, Big Adventures

0800 945 3327 (within New Zealand) | +64 (0) 3 365 1355 | **1800 107 715** (within Australia)

info@wildearth-travel.com | wildearth-travel.com

Wild Earth Travel

Small Ships, Big Adventures

wildearth-travel.com

info@wildearth-travel.com

PRICING

11-Feb-2026 to 19-Feb-2026

Vista	28500 AUD pp
Veranda	32600 AUD pp
Midship Veranda	34600 AUD pp
Medallion	41900 AUD pp
Silver	47300 AUD pp
Royal 1 Bedroom	52000 AUD pp
Grand 1 Bedroom	57100 AUD pp
Owner 1 Bedroom	62700 AUD pp
Royal 2 Bedroom	81300 AUD pp
Grand 2 Bedroom	86400 AUD pp
Owner 2 Bedroom	88400 AUD pp

Vista	28500 AUD pp
Veranda	32600 AUD pp
Midship Veranda	34600 AUD pp
Medallion	41900 AUD pp
Silver	47300 AUD pp
Royal 1 Bedroom	52000 AUD pp
Grand 1 Bedroom	57100 AUD pp
Owner 1 Bedroom	62700 AUD pp
Royal 2 Bedroom	81300 AUD pp
Grand 2 Bedroom	86400 AUD pp
Owner 2 Bedroom	88400 AUD pp

17-Feb-2026 to 25-Feb-2026

Vista	28500 AUD pp
Veranda	32600 AUD pp
Midship Veranda	34600 AUD pp
Medallion	41900 AUD pp
Silver	47300 AUD pp
Royal 1 Bedroom	52000 AUD pp
Grand 1 Bedroom	57100 AUD pp
Owner 1 Bedroom	62700 AUD pp
Royal 2 Bedroom	81300 AUD pp
Grand 2 Bedroom	86400 AUD pp
Owner 2 Bedroom	88400 AUD pp

23-Feb-2026 to 03-Mar-2026

Wild Earth Travel
Small Ships, Big Adventures

0800 945 3327 (within New Zealand) | +64 (0) 3 365 1355 | **1800 107 715** (within Australia)

info@wildearth-travel.com | wildearth-travel.com

Wild Earth Travel

Small Ships, Big Adventures

wildearth-travel.com

info@wildearth-travel.com

PRICING

18-Oct-2026 to 26-Oct-2026

Classic Veranda	27700 AUD pp
Superior Veranda	29000 AUD pp
Deluxe Veranda	29700 AUD pp
Premium Veranda	30200 AUD pp
Silver	36700 AUD pp
Grand 1 Bedroom	60200 AUD pp
Owner 1 Bedroom	76800 AUD pp

05-Nov-2026 to 13-Nov-2026

Classic Veranda	27700 AUD pp
Superior Veranda	29000 AUD pp
Deluxe Veranda	29700 AUD pp
Premium Veranda	30200 AUD pp
Silver	36700 AUD pp
Grand 1 Bedroom	60200 AUD pp
Owner 1 Bedroom	76800 AUD pp

24-Oct-2026 to 01-Nov-2026

Classic Veranda	27700 AUD pp
Superior Veranda	29000 AUD pp
Deluxe Veranda	29700 AUD pp
Premium Veranda	30200 AUD pp
Silver	36700 AUD pp
Grand 1 Bedroom	60200 AUD pp
Owner 1 Bedroom	76800 AUD pp

17-Nov-2026 to 25-Nov-2026

Classic Veranda	27700 AUD pp
Superior Veranda	29000 AUD pp
Deluxe Veranda	29700 AUD pp
Premium Veranda	30200 AUD pp
Silver	36700 AUD pp
Grand 1 Bedroom	60200 AUD pp
Owner 1 Bedroom	76800 AUD pp

30-Oct-2026 to 07-Nov-2026

Classic Veranda	27700 AUD pp
Superior Veranda	29000 AUD pp
Deluxe Veranda	29700 AUD pp
Premium Veranda	30200 AUD pp
Silver	36700 AUD pp
Grand 1 Bedroom	60200 AUD pp
Owner 1 Bedroom	76800 AUD pp

Wild Earth Travel

Small Ships, Big Adventures

wildearth-travel.com

info@wildearth-travel.com

PRICING

23-Nov-2026 to 01-Dec-2026

Classic Veranda	27700 AUD pp
Superior Veranda	29000 AUD pp
Deluxe Veranda	29700 AUD pp
Premium Veranda	30200 AUD pp
Silver	36700 AUD pp
Grand 1 Bedroom	60200 AUD pp
Owner 1 Bedroom	76800 AUD pp

29-Nov-2026 to 07-Dec-2026

Classic Veranda	27700 AUD pp
Superior Veranda	29000 AUD pp
Deluxe Veranda	29700 AUD pp
Premium Veranda	30200 AUD pp
Silver	36700 AUD pp
Grand 1 Bedroom	60200 AUD pp
Owner 1 Bedroom	76800 AUD pp

11-Dec-2026 to 19-Dec-2026

Classic Veranda	30100 AUD pp
Superior Veranda	30600 AUD pp
Deluxe Veranda	31100 AUD pp
Premium Veranda	31600 AUD pp
Silver	37000 AUD pp
Grand 1 Bedroom	61700 AUD pp
Owner 1 Bedroom	79200 AUD pp

04-Jan-2027 to 12-Jan-2027

Classic Veranda	33400 AUD pp
Superior Veranda	35100 AUD pp
Deluxe Veranda	36000 AUD pp
Premium Veranda	36600 AUD pp
Silver	39000 AUD pp
Grand 1 Bedroom	66200 AUD pp
Owner 1 Bedroom	85500 AUD pp

10-Jan-2027 to 18-Jan-2027

Classic Veranda	33400 AUD pp
Superior Veranda	35100 AUD pp
Deluxe Veranda	36000 AUD pp
Premium Veranda	36600 AUD pp
Silver	39000 AUD pp
Grand 1 Bedroom	66200 AUD pp
Owner 1 Bedroom	85500 AUD pp

Wild Earth Travel

Small Ships, Big Adventures

wildearth-travel.com

info@wildearth-travel.com

PRICING

16-Jan-2027 to 24-Jan-2027

Classic Veranda	33400 AUD pp
Superior Veranda	35100 AUD pp
Deluxe Veranda	36000 AUD pp
Premium Veranda	36600 AUD pp
Silver	39000 AUD pp
Grand 1 Bedroom	66200 AUD pp
Owner 1 Bedroom	85500 AUD pp

22-Jan-2027 to 30-Jan-2027

Classic Veranda	33400 AUD pp
Superior Veranda	35100 AUD pp
Deluxe Veranda	36000 AUD pp
Premium Veranda	36600 AUD pp
Silver	39000 AUD pp
Grand 1 Bedroom	66200 AUD pp
Owner 1 Bedroom	85500 AUD pp

03-Feb-2027 to 11-Feb-2027

Classic Veranda	33400 AUD pp
Superior Veranda	35100 AUD pp
Deluxe Veranda	36000 AUD pp
Premium Veranda	36600 AUD pp
Silver	39000 AUD pp
Grand 1 Bedroom	66200 AUD pp
Owner 1 Bedroom	85500 AUD pp

09-Feb-2027 to 17-Feb-2027

Classic Veranda	33400 AUD pp
Superior Veranda	35100 AUD pp
Deluxe Veranda	36000 AUD pp
Premium Veranda	36600 AUD pp
Silver	39000 AUD pp
Grand 1 Bedroom	66200 AUD pp
Owner 1 Bedroom	85500 AUD pp

15-Feb-2027 to 23-Feb-2027

Classic Veranda	32500 AUD pp
Superior Veranda	34400 AUD pp
Deluxe Veranda	35300 AUD pp
Premium Veranda	35900 AUD pp
Silver	38400 AUD pp
Grand 1 Bedroom	66600 AUD pp
Owner 1 Bedroom	86600 AUD pp



Wild Earth Travel

Small Ships, Big Adventures



wildearth-travel.com

info@wildearth-travel.com

PRICING

21-Feb-2027 to 01-Mar-2027

Classic Veranda	31800 AUD pp
Superior Veranda	33500 AUD pp
Deluxe Veranda	34300 AUD pp
Premium Veranda	34900 AUD pp
Silver	38400 AUD pp
Grand 1 Bedroom	65100 AUD pp
Owner 1 Bedroom	84000 AUD pp



Wild Earth Travel

Small Ships, Big Adventures

0800 945 3327 (within New Zealand) | +64 (0) 3 365 1355 | **1800 107 715** (within Australia)

info@wildearth-travel.com | **wildearth-travel.com**