

Wild Earth Travel

Small Ships, Big Adventures

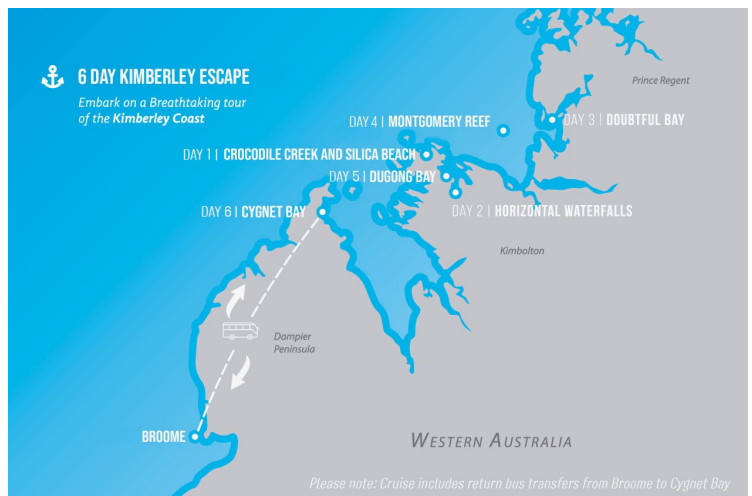
wildearth-travel.com

info@wildearth-travel.com

6 DAY KIMBERLEY ESCAPE CRUISE

Experience the majestic Kimberley Coast, featuring Horizontal Falls, Montgomery Reef, Barramundi fishing, and stunning waterfalls.

Embark on our 6-Day Kimberley Escape Cruise, the perfect way to experience the breathtaking Kimberley Coast in a shorter time frame. Aboard our luxury small-boat vessel, Diversity II, you'll explore iconic highlights like Horizontal Falls, whale watching, Montgomery Reef, Barramundi fishing, and stunning waterfalls. Enjoy gourmet cuisine, the expertise of our seasoned crew, and our signature Diversity 5-Star service for an unforgettable adventure.



ITINERARY

Day 1: Depart Broome, Transfer to Cygnet Bay

You are collected at approximately 6:30am from your accommodation. Once onboard the coach, you will have the opportunity to meet the other guests and start your transfer from Broome to Cygnet Bay. Arrive at Cygnet Bay at approximately 9am where you will do a short tour of the area before being transferred to the boat at 10am where you will be greeted with champagne on arrival and have time to settle down and meet the crew. Fresh Water Crocodile in Western Australia's Kimberley

Once the safety brief is complete, the vessel will steam across the King Sound and you can enjoy a swim at the delightful Silicia Beach. Enjoy a succulent lunch onboard, whilst you steam to your next destination Crocodile creek. You will have the opportunity to enjoy another freshwater swim while learning about the history of Crocodile Creek. Diversity II will then start its 3-hour steam to Horizontal Falls where we will anchor for the night.

Day 2: Horizontal Falls

Wild Earth Travel

Small Ships, Big Adventures

0800 945 3327 (within New Zealand) | +64 (0) 3 365 1355 | **1800 107 715** (within Australia)

info@wildearth-travel.com | **wildearth-travel.com**



Wild Earth Travel

Small Ships, Big Adventures

wildearth-travel.com

info@wildearth-travel.com

Wake up to the delights of Yampi Sound. Start your day with breakfast, then, board one of our custom-built tenders where you can experience the thrill of the amazing Horizontal Falls. Guests will then have the opportunity to tour the surrounding area, learn about Cyclone creek and the amazing rock formations. An early lunch at noon, before steaming to our next destination, Leadline Creek. Depending on tides, the afternoon will be spent either fishing or taking a bush walk to Squatters for a freshwater swim. Anchoring at Leadline affords the luxury of spending the night under the stunning Kimberley sky, while relaxing with a well-deserved beverage.

Day 3: Doubtful Bay

Awaken to the aroma of fresh coffee and breakfast being prepared. Once energized, sit back and enjoy the beautiful steam through Raft point into Doubtful Bay. Doubtful Bay is the gateway to many waterways each with their own unique landscape and swimming holes. Guests will be able to walk and swim at both Sapphire and Ruby falls, where you will gain some respite from the Kimberley sun. After lunch at noon, Diversity 2 will steam to Raft point and potentially enjoy an afternoon fish or booze cruise around the stunning Steep Island. Guests will then enjoy another beautifully cooked meal, while anchored in the stunning surrounds of Raft Point.

Day 4: Montgomery Reef

Depart Raft Point early and enjoy a short steam to nearby Montgomery Reef. Once anchored, guests will enjoy a scenic tour as the reef rises out of the ocean and water cascades into the channel. Guests will then have the choice to explore the nearby Trevally Islands for some awesome bluewater fishing or just take the opportunity to photograph a special part of the Kimberley. Diversity II will then start its steam to Dugong Bay where it will anchor for the night.

Day 5: Dugong Bay

Wake up to Dugong Bay's beautiful surrounds while you enjoy your morning coffee. Once breakfast is served, guests will be taken on the tenders to explore the surrounding areas and walk up to the beautiful McNabs pool for a morning swim. Once back onboard, Diversity II will steam to Phoenix Bay for a potential

afternoon fish, before starting the journey back to Cygnet Bay.

Day 6: Arrive Cygnet Bay, Transfer to Broome

Wake up in Cygnet bay, where you will enjoy your final breakfast and reminisce on your amazing Kimberley Escape. The coach will be ready to transfer you back to Broome, where you will be dropped to your accommodation at approximately 12pm.

Please note:

Itineraries are subject to change.

Wild Earth Travel

Small Ships, Big Adventures

wildearth-travel.com

info@wildearth-travel.com

YOUR SHIP: DIVERSITY II & DIVERSITY III

YOUR SHIP:	Diversity II & Diversity III
VESSEL TYPE:	Luxury Catamaran
LENGTH:	21m/24m
PASSENGER CAPACITY:	12
BUILT/REFURBISHED:	2001 (refurbished 2024)/2009



We operate our adventure cruises on two luxurious power catamarans, each offering an intimate experience with a maximum of 12 passengers onboard. Both vessels in the Diversity fleet are fully air conditioned and feature 6 spacious ensuite cabins (with large panoramic windows) that are serviced daily. Both vessels offer indoor and outdoor dining areas, a large spacious back deck dining area, and 3 expedition tender vessels. You will be joined by 5 exceptional crew members, and have Starlink Wifi available complimentary throughout.

Wild Earth Travel

Small Ships, Big Adventures

0800 945 3327 (within New Zealand) | +64 (0) 3 365 1355 | **1800 107 715** (within Australia)

info@wildearth-travel.com | **wildearth-travel.com**

Wild Earth Travel

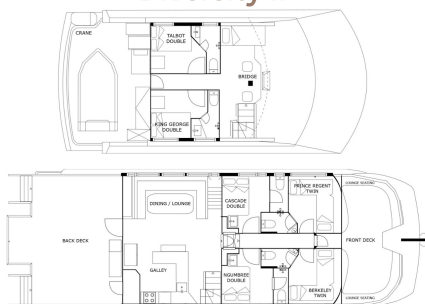
Small Ships, Big Adventures

wildearth-travel.com

info@wildearth-travel.com

INSIDE YOUR SHIP

Diversity II



Diversity III



Flybridge Ensuite



Statesman Ensuite



Wild Earth Travel

Small Ships, Big Adventures

0800 945 3327 (within New Zealand) | +64 (0) 3 365 1355 | 1800 107 715 (within Australia)

info@wildearth-travel.com | wildearth-travel.com



Wild Earth Travel

Small Ships, Big Adventures

wildearth-travel.com

info@wildearth-travel.com

PRICING

06-Oct-2026 to 11-Oct-2026

Statesman Ensuite	5400 AUD pp
-------------------	-------------

Flybridge Ensuite	5900 AUD pp
-------------------	-------------

11-Oct-2026 to 16-Oct-2026

Statesman Ensuite	5400 AUD pp
-------------------	-------------

Flybridge Ensuite	5900 AUD pp
-------------------	-------------

16-Oct-2026 to 21-Oct-2026

Statesman Ensuite	5400 AUD pp
-------------------	-------------

Flybridge Ensuite	5900 AUD pp
-------------------	-------------

Wild Earth Travel

Small Ships, Big Adventures

0800 945 3327 (within New Zealand) | +64 (0) 3 365 1355 | **1800 107 715** (within Australia)

info@wildearth-travel.com | **wildearth-travel.com**